

FILL CALCS  
 74.05 s.f. (Section B) x 52.75' (Section A) = 3,906 c.f.  
 36.35 s.f. (Section A) x 43.50' (Section B) = 3,949 c.f.  
 Average Fill Calcs = 3,653 c.f.

RE-SHAPE EXISTING 25' SWALE  
 3 sections of swale average 3.95 s.f. x 183 linear ft long  
 Average Fill Calc for Swale = 123 c.f.

(NOTE: ALL SIDEWALKS and DRIVES ARE LEVEL WITH EXISTING GRADES)

Fill Total = 4,376 c.f.

SWALE BETWEEN BUILDING CUT CALCS  
 AVERAGE AREA = 1.76 s.f. x 1.57 s.f. = 1.67 s.f.  
 LENGTH OF SWALE = 133 ft  
 Volume of SWALE CUT = 222 c.f.

RE-SHAPE EXISTING 25' SWALE CUT CALCS  
 3 sections of swale average 4.95 s.f. x 183 linear ft long  
 Average Fill Calc for Swale = 906 c.f.

WOODED AREA CUT CALCS  
 The area to be cut is (130.7ft x 59.5ft) x 0.50 ft depth  
 = 3,910 c.f.

CUT Totals = 4,838 c.f.

NO NET FILL CALCULATIONS

GENERAL SITE DRAINAGE NOTES

SITE DRAINAGE LEGEND

STORM WATER RUN-OFF CALCULATIONS

OUR LADY OF FATIMA  
 65110 VORTISCH ROAD  
 LACOMBE, LOUISIANA

OUR LADY OF FATIMA  
 65110 VORTISCH ROAD  
 LACOMBE, LOUISIANA

OUR LADY OF FATIMA  
 65110 VORTISCH ROAD  
 LACOMBE, LOUISIANA

OUR LADY OF FATIMA  
 65110 VORTISCH ROAD  
 LACOMBE, LOUISIANA

OUR LADY OF FATIMA  
 65110 VORTISCH ROAD  
 LACOMBE, LOUISIANA

OUR LADY OF FATIMA  
 65110 VORTISCH ROAD  
 LACOMBE, LOUISIANA

OUR LADY OF FATIMA  
 65110 VORTISCH ROAD  
 LACOMBE, LOUISIANA

OUR LADY OF FATIMA  
 65110 VORTISCH ROAD  
 LACOMBE, LOUISIANA

OUR LADY OF FATIMA  
 65110 VORTISCH ROAD  
 LACOMBE, LOUISIANA

OUR LADY OF FATIMA  
 65110 VORTISCH ROAD  
 LACOMBE, LOUISIANA

OUR LADY OF FATIMA  
 65110 VORTISCH ROAD  
 LACOMBE, LOUISIANA

OUR LADY OF FATIMA  
 65110 VORTISCH ROAD  
 LACOMBE, LOUISIANA

OUR LADY OF FATIMA  
 65110 VORTISCH ROAD  
 LACOMBE, LOUISIANA

OUR LADY OF FATIMA  
 65110 VORTISCH ROAD  
 LACOMBE, LOUISIANA

OUR LADY OF FATIMA  
 65110 VORTISCH ROAD  
 LACOMBE, LOUISIANA

OUR LADY OF FATIMA  
 65110 VORTISCH ROAD  
 LACOMBE, LOUISIANA

OUR LADY OF FATIMA  
 65110 VORTISCH ROAD  
 LACOMBE, LOUISIANA

OUR LADY OF FATIMA  
 65110 VORTISCH ROAD  
 LACOMBE, LOUISIANA

OUR LADY OF FATIMA  
 65110 VORTISCH ROAD  
 LACOMBE, LOUISIANA

OUR LADY OF FATIMA  
 65110 VORTISCH ROAD  
 LACOMBE, LOUISIANA

OUR LADY OF FATIMA  
 65110 VORTISCH ROAD  
 LACOMBE, LOUISIANA

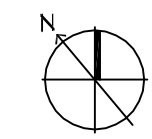
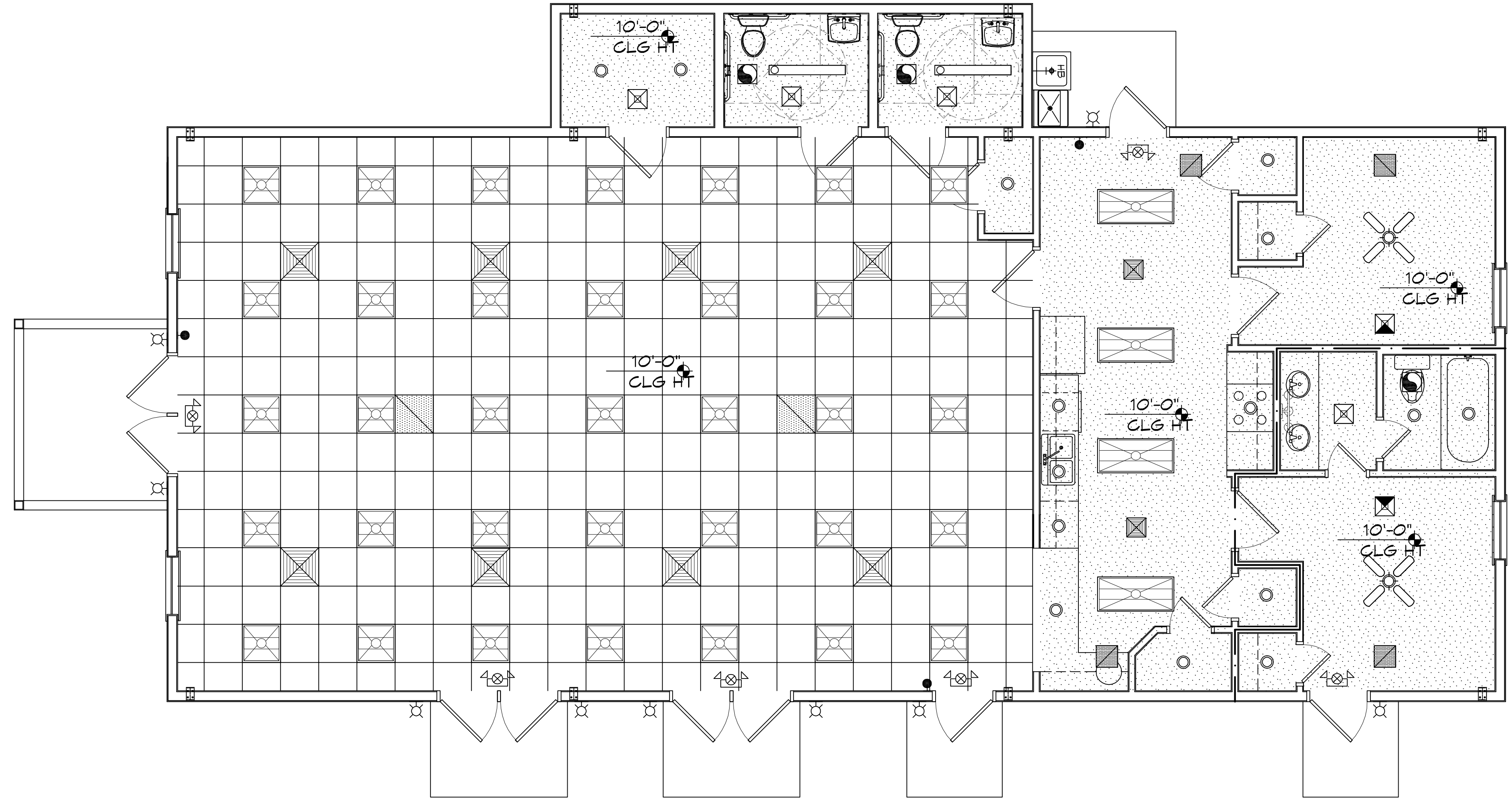
OUR LADY OF FATIMA  
 65110 VORTISCH ROAD  
 LACOMBE, LOUISIANA

OUR LADY OF FATIMA  
 65110 VORTISCH ROAD  
 LACOMBE, LOUISIANA





FILE NAME: A:\1 - DUDDEKIND\3120 - Our Lady of Loretto - Loretto\Change\Current - 02/26/2015.dwg DATE PLOT: 8/26/15 10:52:15 AM



**REFLECTED CEILING PLAN**  
SCALE: 1/4" = 1'-0"

LEGEND			
	AIR SUPPLY GRILLE (24X24)		RECESSED LIGHT
	RETURN AIR GRILLE		PENDANT LIGHT
	AIR SUPPLY GRILLE (12X12)		EXTERIOR WALL LIGHT
	EMERGENCY LIGHT		2X4 FLUORESCENT
			CEILING MOUNTED EXIT LIGHT
			VANITY LIGHT

**DAMMON**  
ENGINEERING, INC.  
LOUISIANA & MISSISSIPPI

Chief Engineer: Brian Metch, PE  
554 Old Spanish Trail  
Stidell, LA 70568  
www.dammonengineering.com  
info@dammonengineering.com  
PH: 985.649.5632

REVISIONS	DATE	#	DESCRIPTION

SEAL:

MULTI PURPOSE BUILDING

**OUR LADY OF A T I M A**

68110 VORTSCH ROAD  
LACOMBE, LOUISIANA 70445

JOB No: 2370 DATE: 07-15-2020  
DRAWN BY: RLD CHECKED BY: CKD

SHEET TITLE:  
REFLECTED CEILING PLAN

DRAWING NUMBER:  
**A102**









