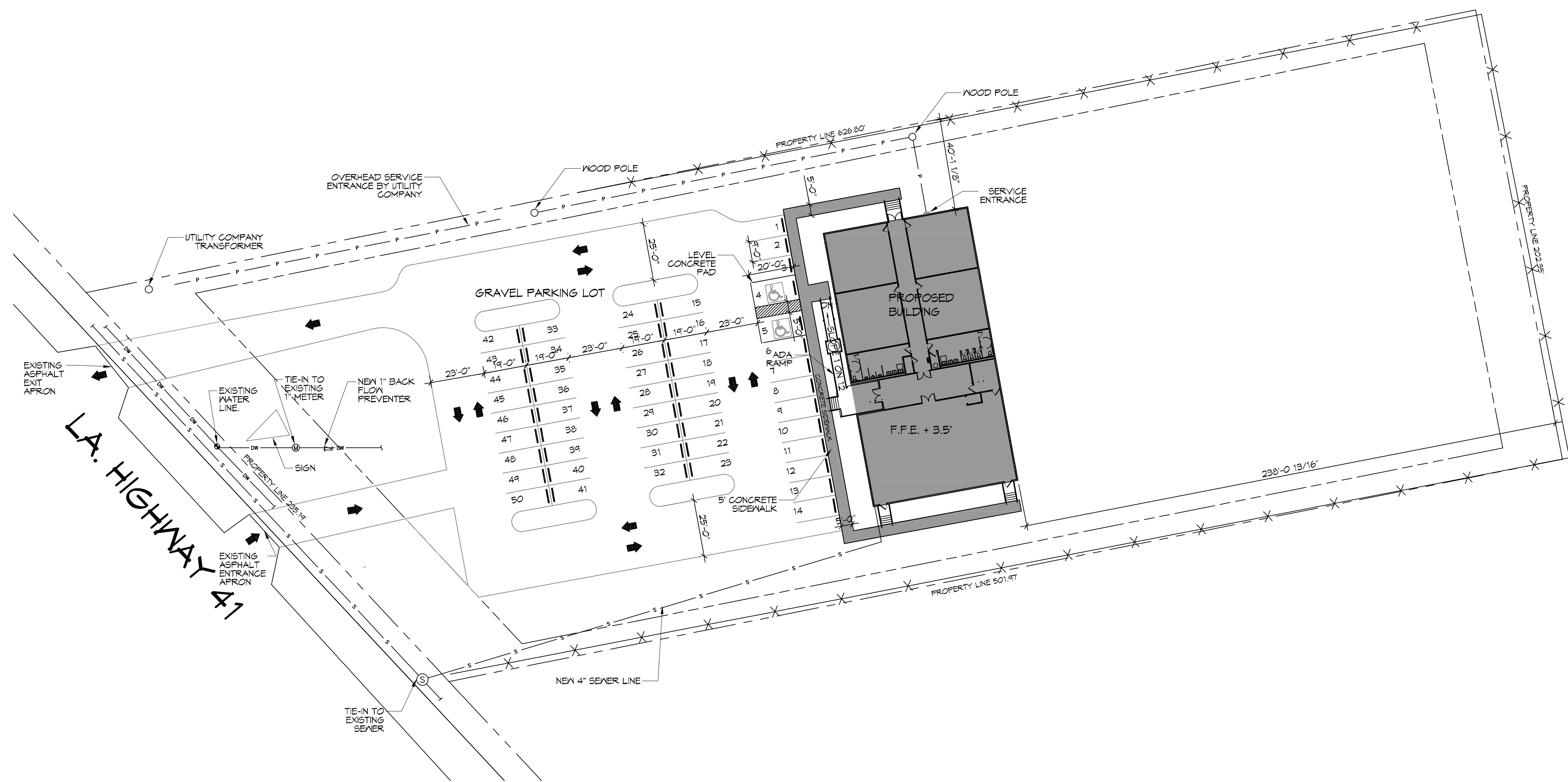


THE OWNER: JAC... CONSULTING ENGINEERS...  
 DATE: 11/05/2019  
 PROJECT: THE CROSSING



N  
**SITE PLAN**  
 SCALE: 1" = 30'  
 NEW SITE

<b>PLANNING</b>
ZONED 'B2' HAY COMMERCIAL
<b>FLOOD ZONE</b>
ZONE 'X'
<b>BUILDING SETBACK LINES</b>
FRONT - 35' SIDES - 10' REAR - 25'
<b>BUILDING ELEVATION</b>
BASE FLOOD ELEVATION = 0' FINISHED FLOOR ELEVATION = +3.5'
<b>PARKING</b>
1 SPACE PER 4 OCCUPANTS 176 SEATS / 4 = 44 PARKING SPACES REQUIRED 2 HANDICAP PARKING SPACES PROVIDED 48 REGULAR PARKING SPACES PROVIDED TOTAL PARKING SPACES PROVIDED 50
<b>SITE LIGHTING</b>
EXTERIOR LIGHTING SHALL BE SHADED OR INWARDLY DIRECTED IN SUCH A MANNER SO THAT NO DIRECT LIGHTING OR GLARE BE CAST BEYOND THE PROPERTY LINE. THE INTENSITY OF SUCH LIGHTING SHALL NOT EXCEED ONE FOOT CANDLE AS MEASURED AT THE ABUTTING PROPERTY LINE.

REVISIONS	DATE								
	#	DESCRIPTION							

--	--	--	--	--	--	--	--	--	--

**THE CROSSING**  
 64452 HIGHWAY 41,  
 PEARL RIVER, LA 70452  
 JOB No: 2504 | DATE: 11/05/2019  
 DRAWN BY: JUS | CHECKED BY: RLD

SHEET TITLE:  
 SITE PLAN  
 DRAWING NUMBER:  
**C101**  
 SHEET No: 3 of 13

**DAMMON ENGINEERING, INC.**  
 LOUISIANA & MISSISSIPPI  
 Chief Engineer: Brian Mitch, PE  
 594 Old Spanish Trail  
 Slidell, LA 70468  
 www.dammonengineering.com  
 info@dammonengineering.com  
 PH: 985.649.2382 | F: 985.649.1290