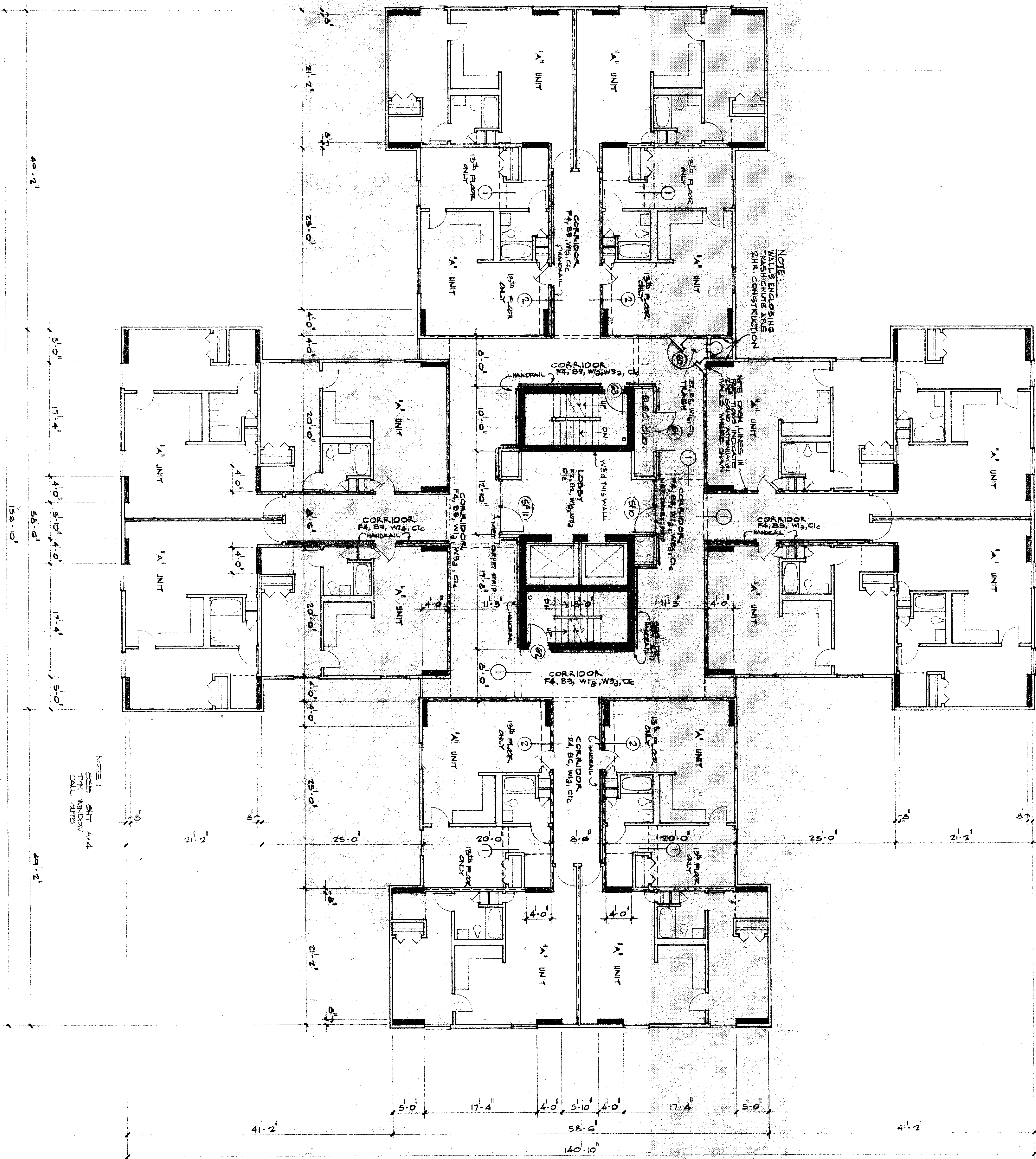


SEVENTH THRU THIRTEENTH FLOOR PLAN

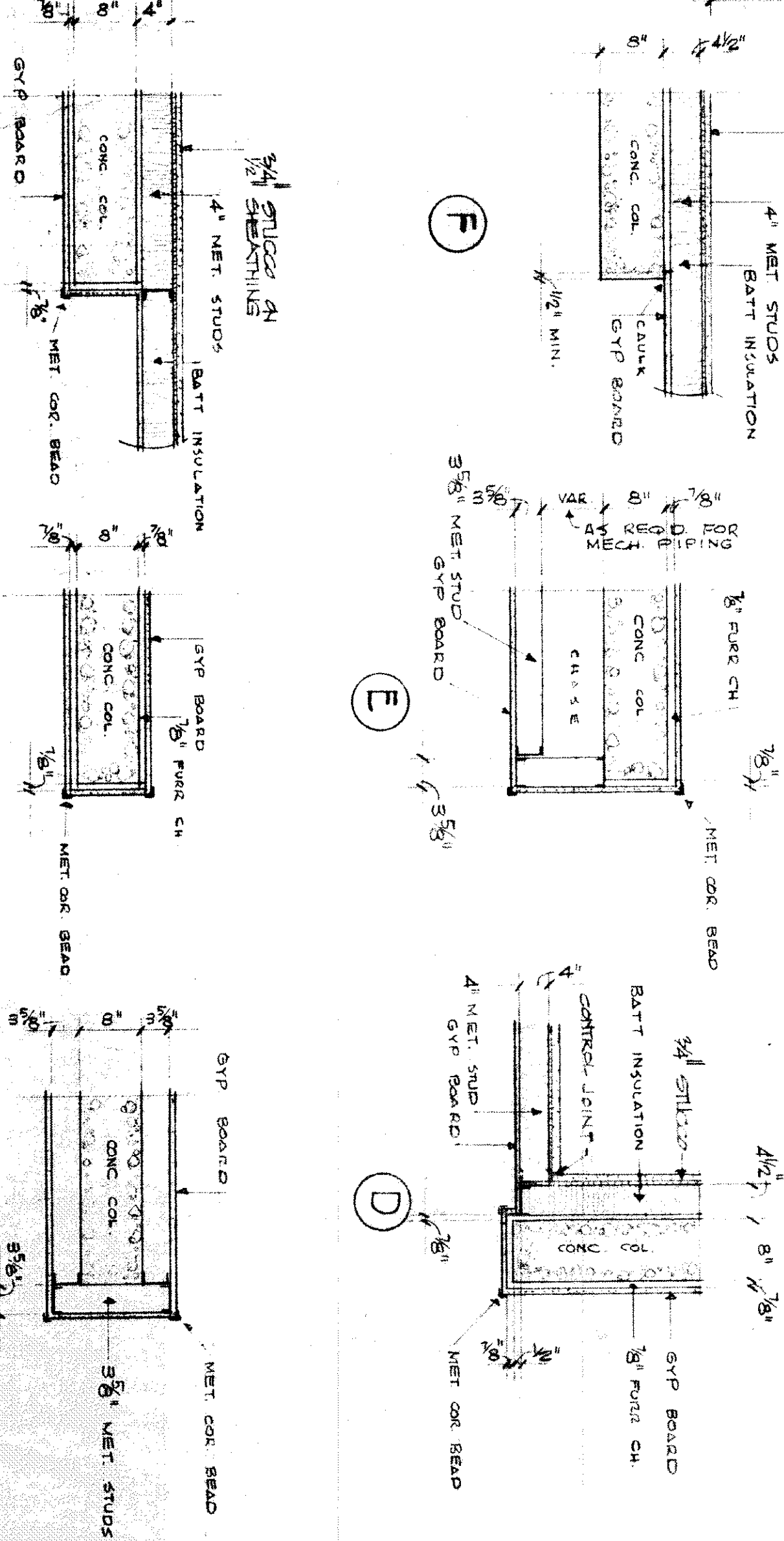
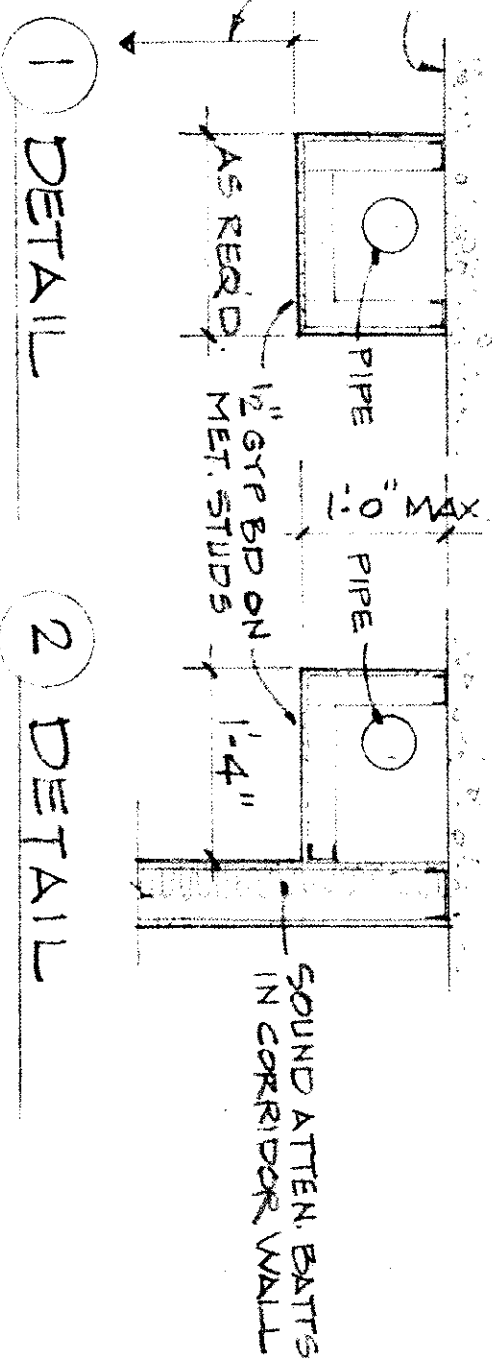
SCALE: 1/8" = 1'-0"

NOTES:

1. UNLESS OTHERWISE NOTED, ALL PLAN DIMENSIONS ARE TO FACE OF CONC. COLUMN OR FACE OF CONC. WALL.
2. SEE SHEET A-11 FOR CHANGE SCALE PLANS OF INDIVIDUAL STAIRWELL AND CON. LANE SCALE PLAN OF THE ELEVATION.
3. STAIRWELL AND CON. LANE SCALE PLAN OF THE ELEVATION.



CLG FURRING DETAILS FOR PLBG VENTS AND SPRINKLER PIPING



TYPICAL WALL AND COLUMN CONDITIONS

INDEX TO ROOM FINISHES	FLOOR FINISHES	F1 CONCRETE	F2 VINYL ASBESTOS TILE (2x2) 1/4" THICK	F3 SHEET VINYL	F4 CARPET
BASE	B1 NOT REQUIRED	B2 RUBBER COVE (SET ON)	B3 STRAIGHT RUBBER		
WALLS	W1 GYP BOARD (SEE PLAN)	W2 CERAMIC TILE (IN THE ENCLOSURE ONLY)	W3 CONCRETE		
CEILING	C1 CONCRETE SLAB	C2 SUS. ACOUS. TILE IN 2'x4' MET. GRID	C3 SUS. GYP BOARD IN 2'x4' ALUM. GRID	C4 GYP BOARD ON METAL SUSPENSION SYSTEM	
MATERIAL FINISH	M1 LATEX PAINT	M2 LATEX ENAMEL PAINT	M3 SPRAYED TEXTURED ACOUS. CLG.	M4 VINYL WALL COVERING	M5 FLOOR HARDENER

NOTES: This drawing is the exclusive property of Parker-Croston Associates and shall not be used or reproduced for any purpose without the express written consent of Parker-Croston Associates.

REVISIONS: 1. REVISED 7-31-75