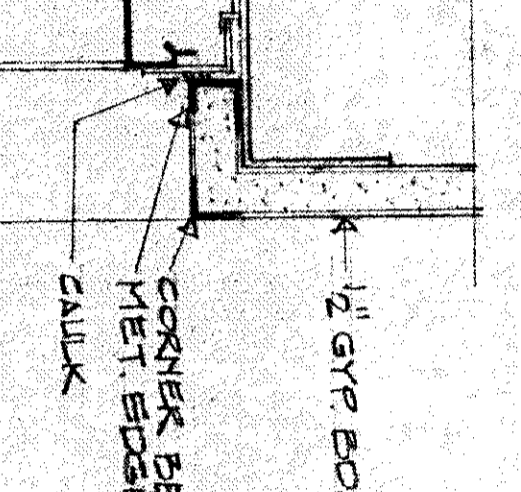
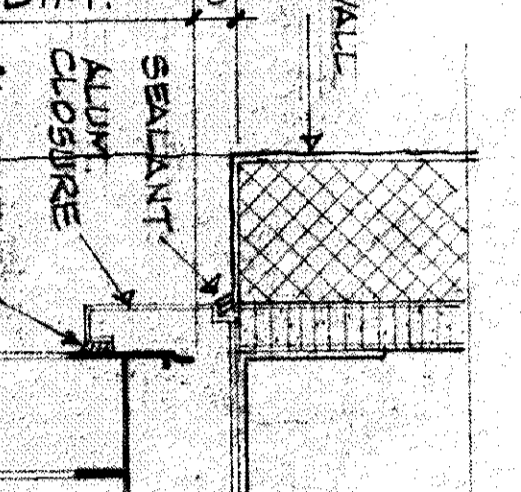
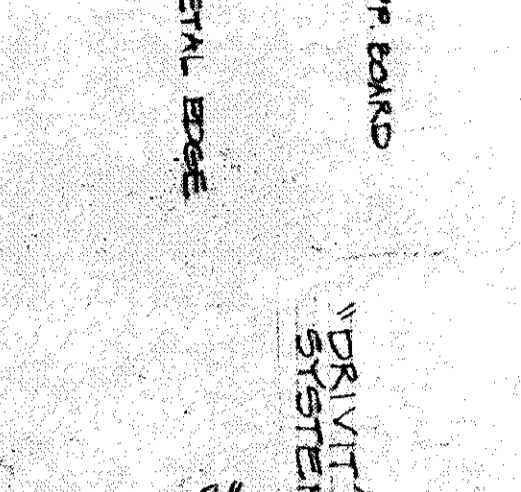
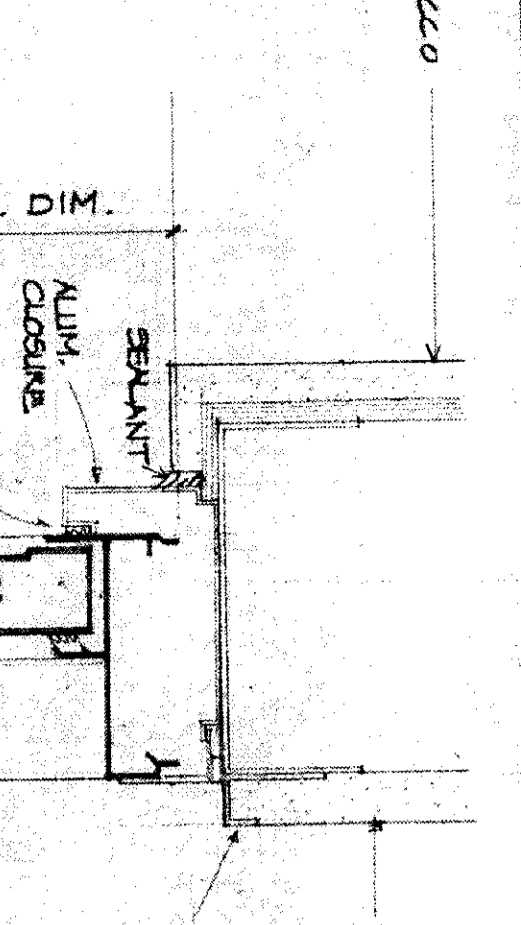
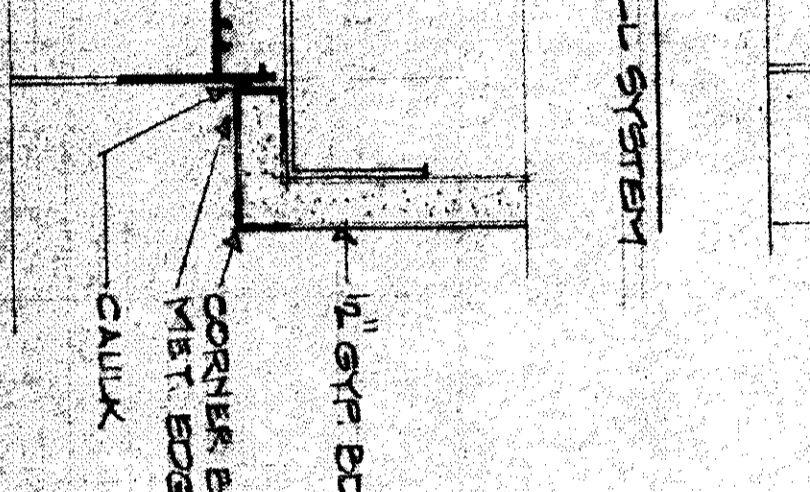
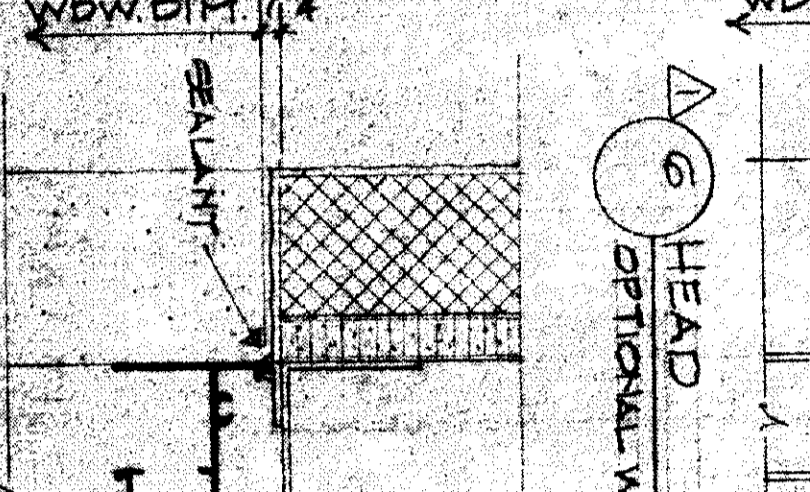
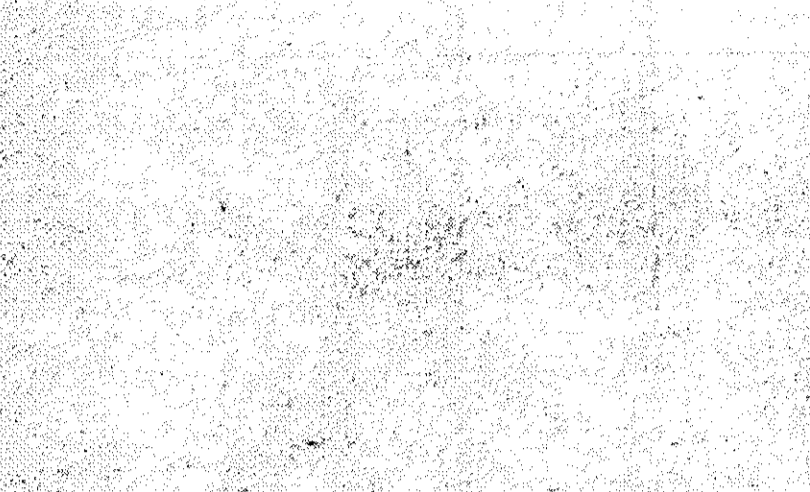
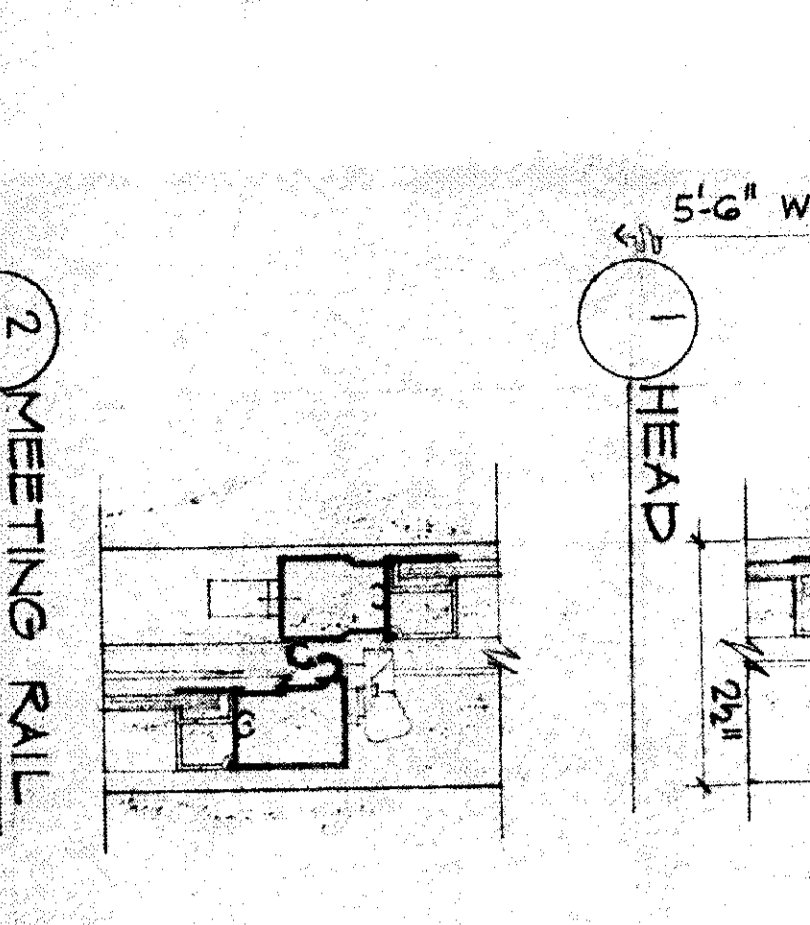
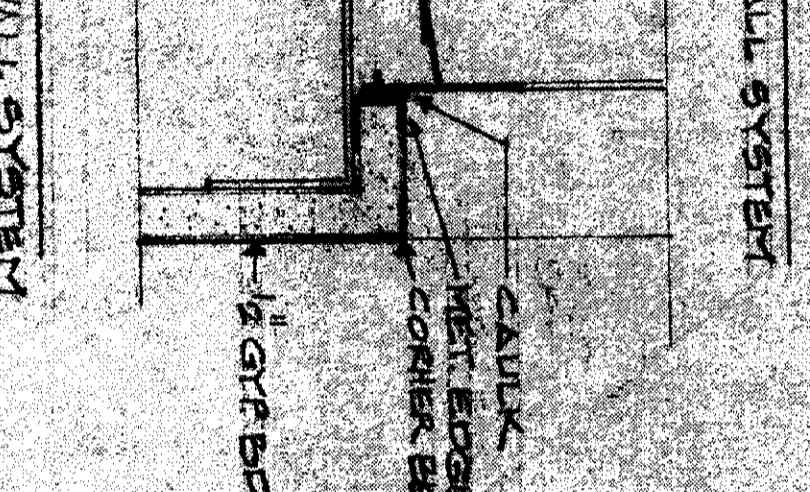
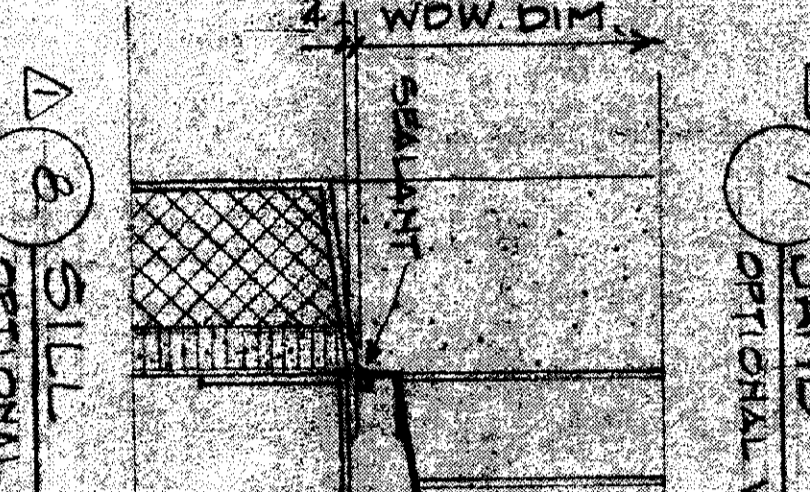
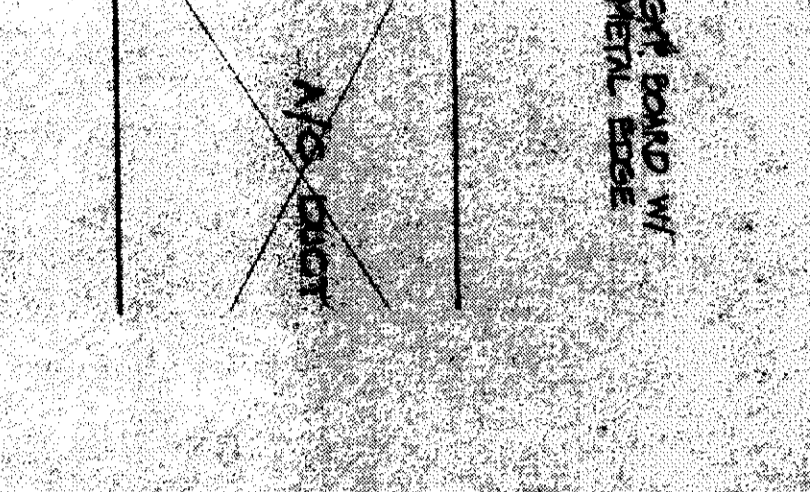
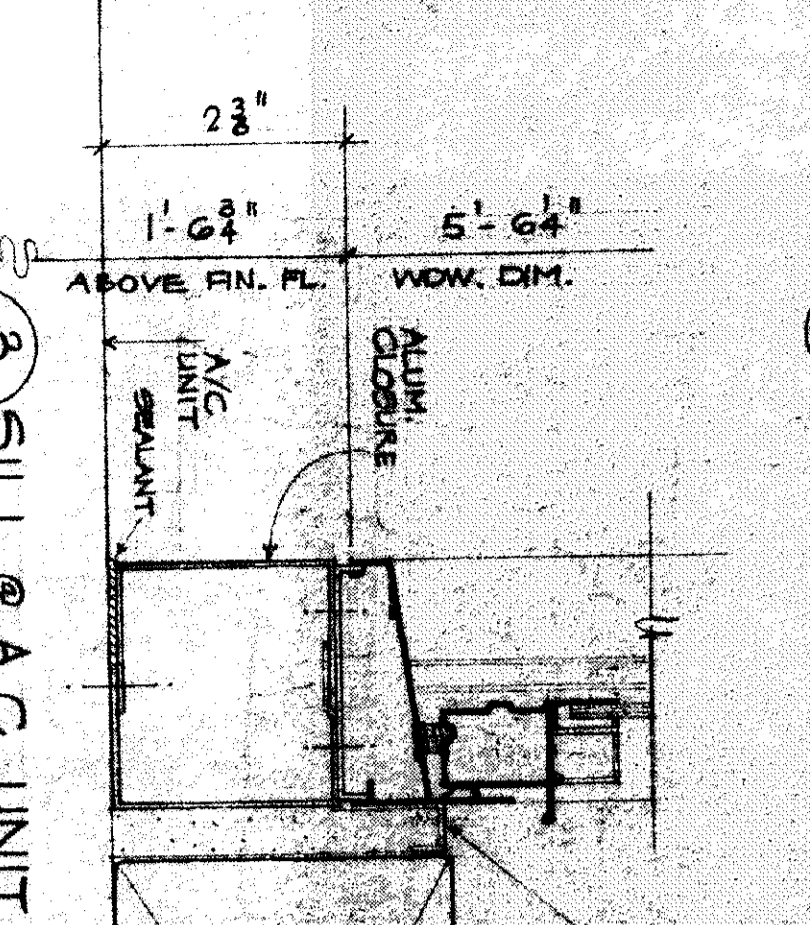
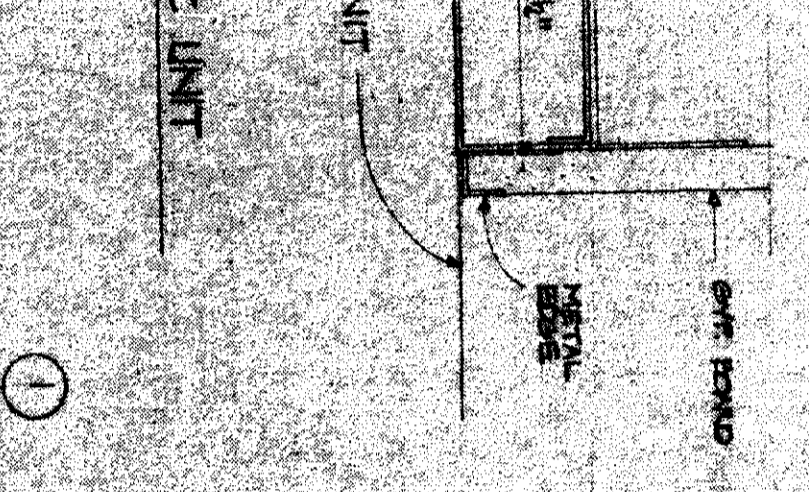
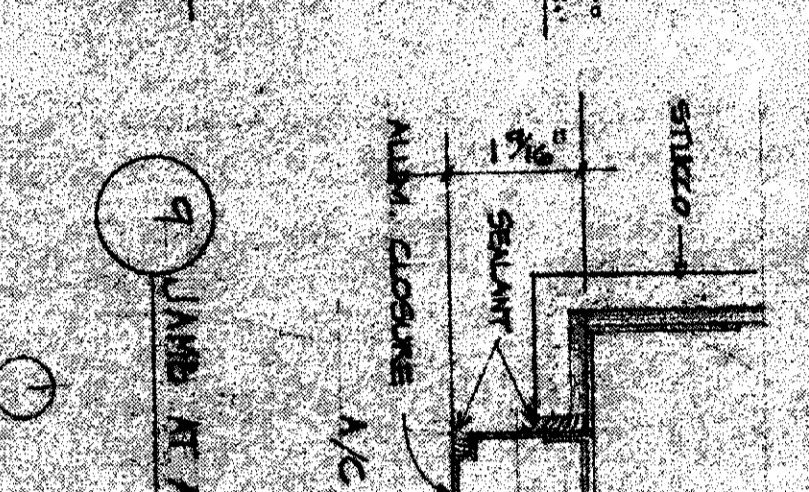
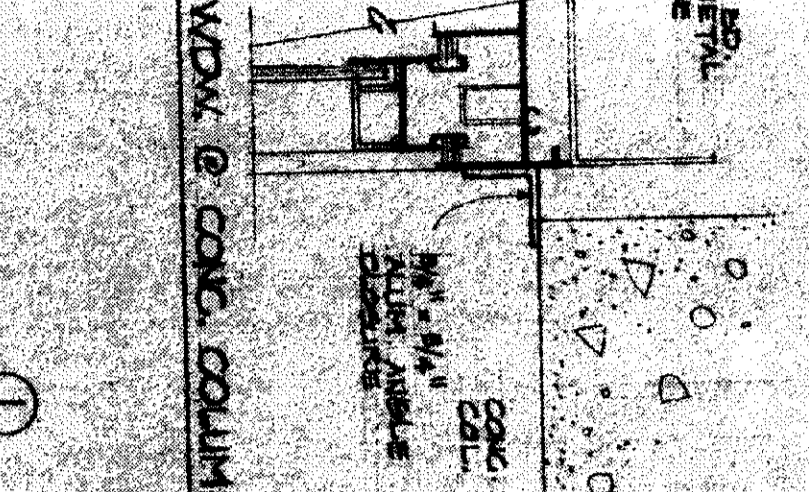
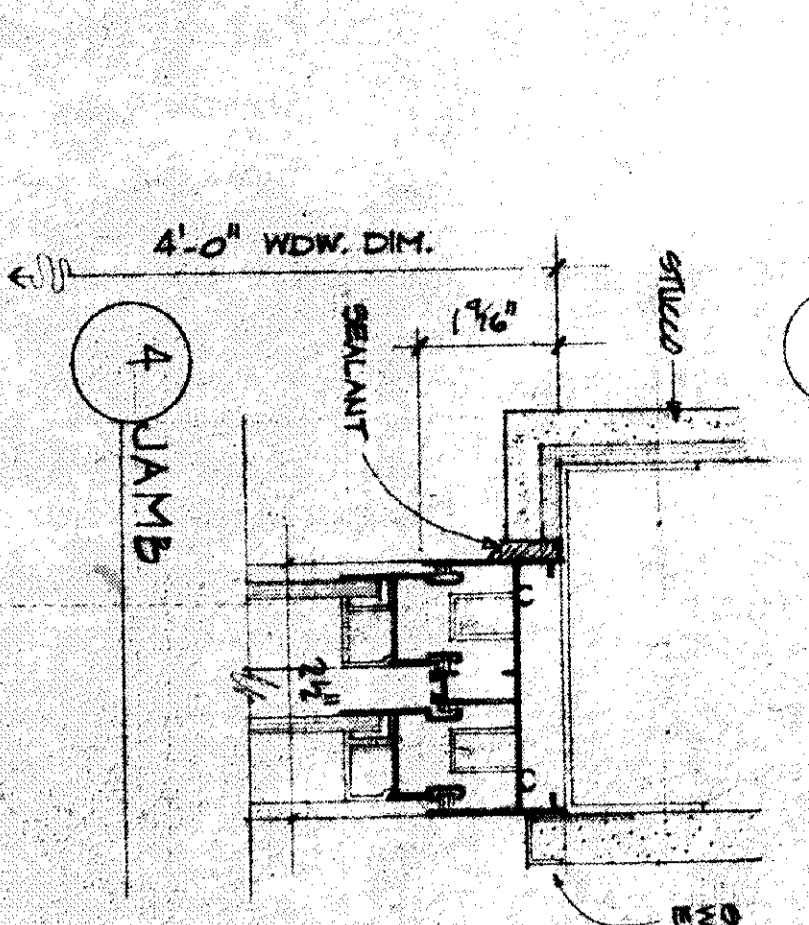
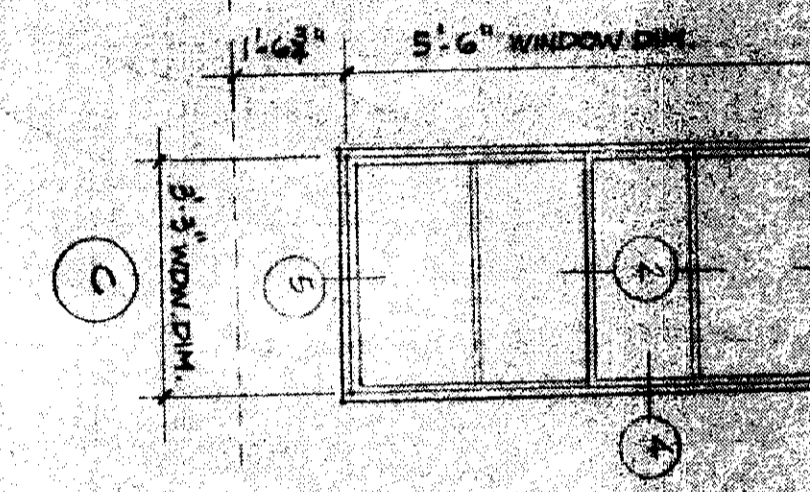
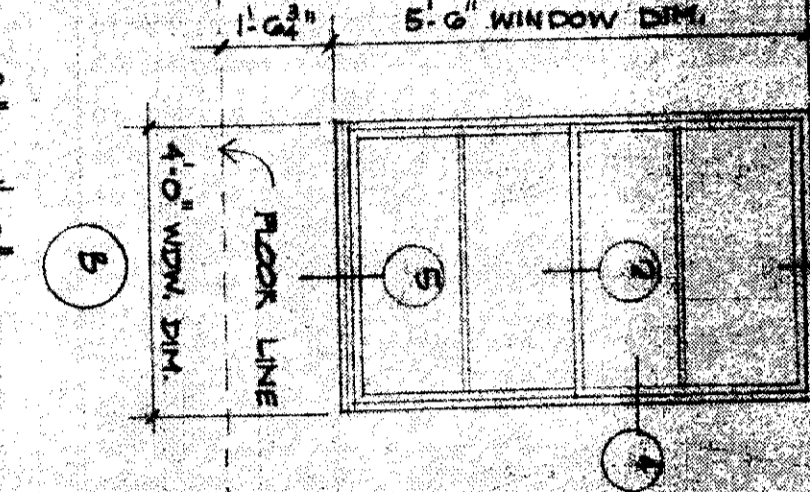
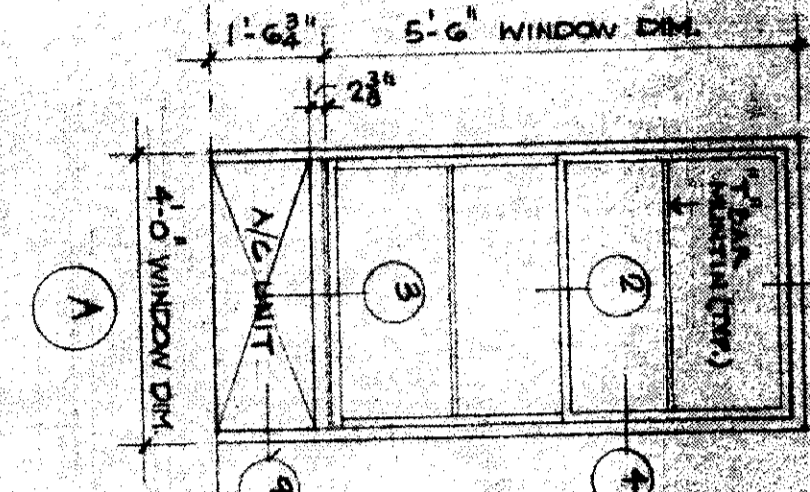
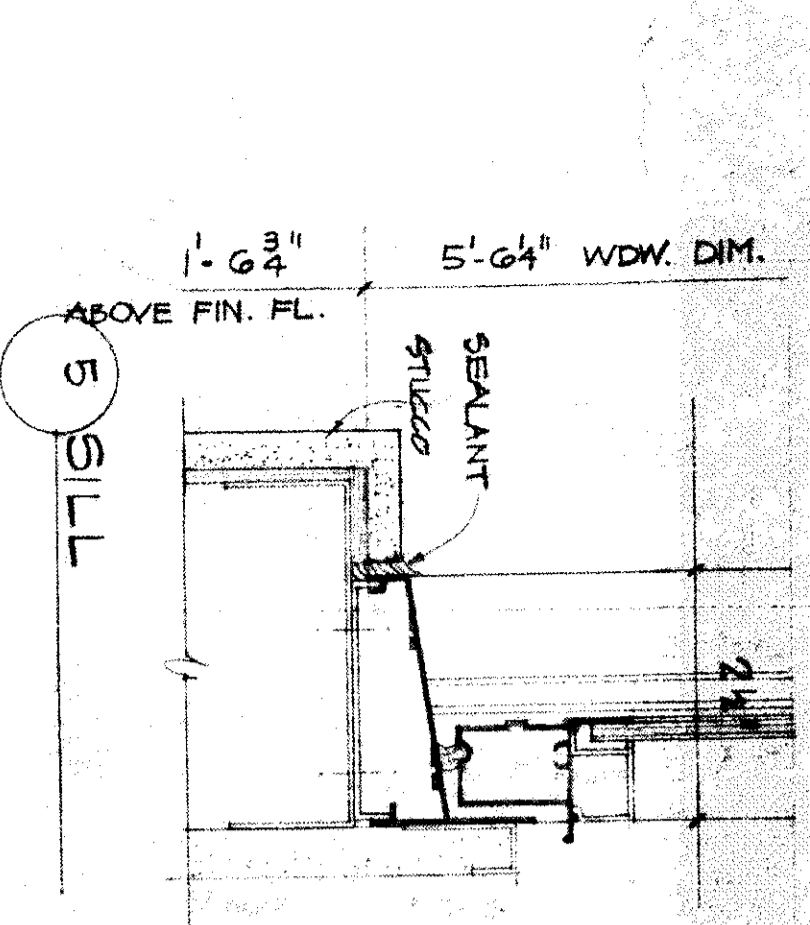
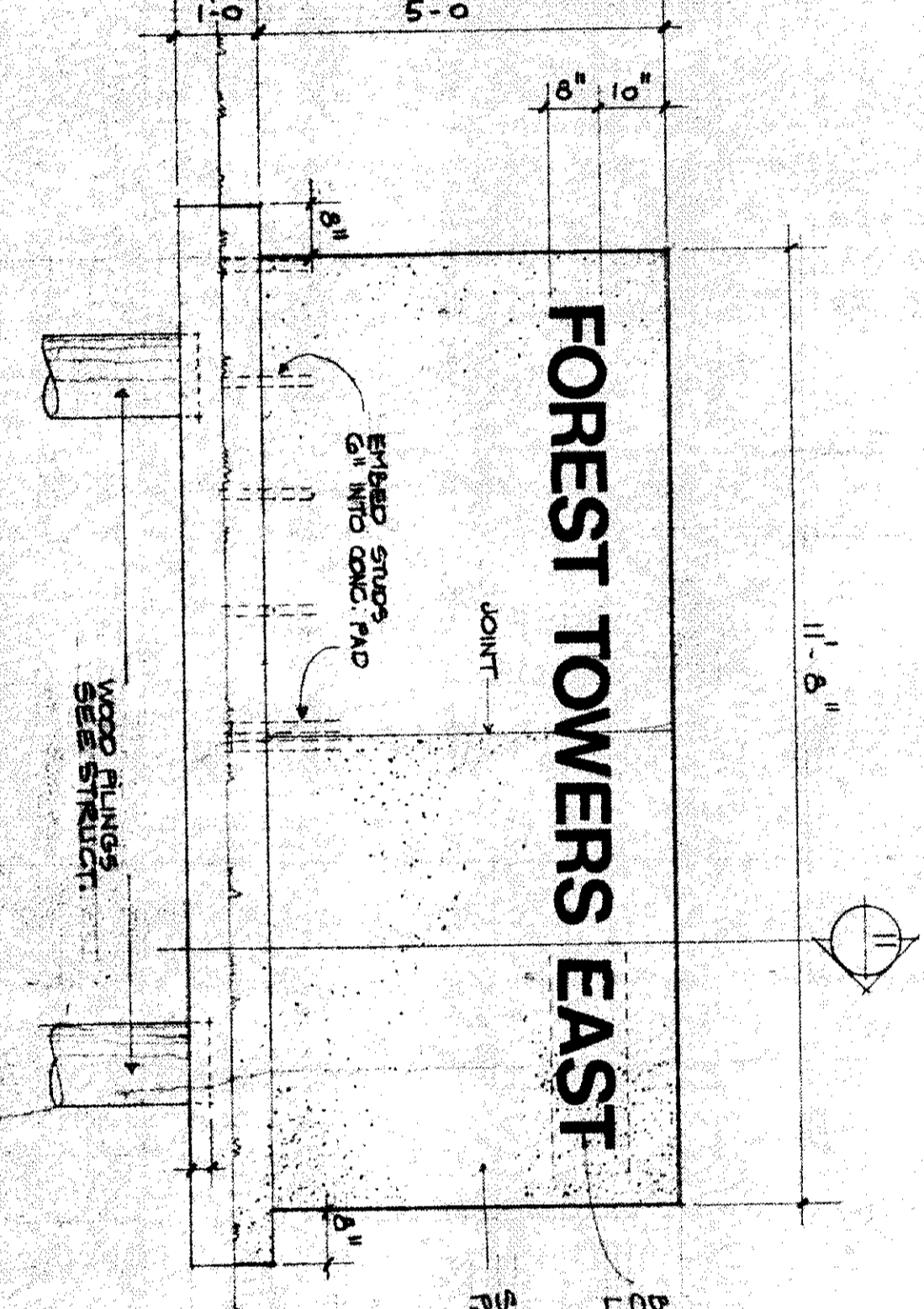


WINDOW DETAILS

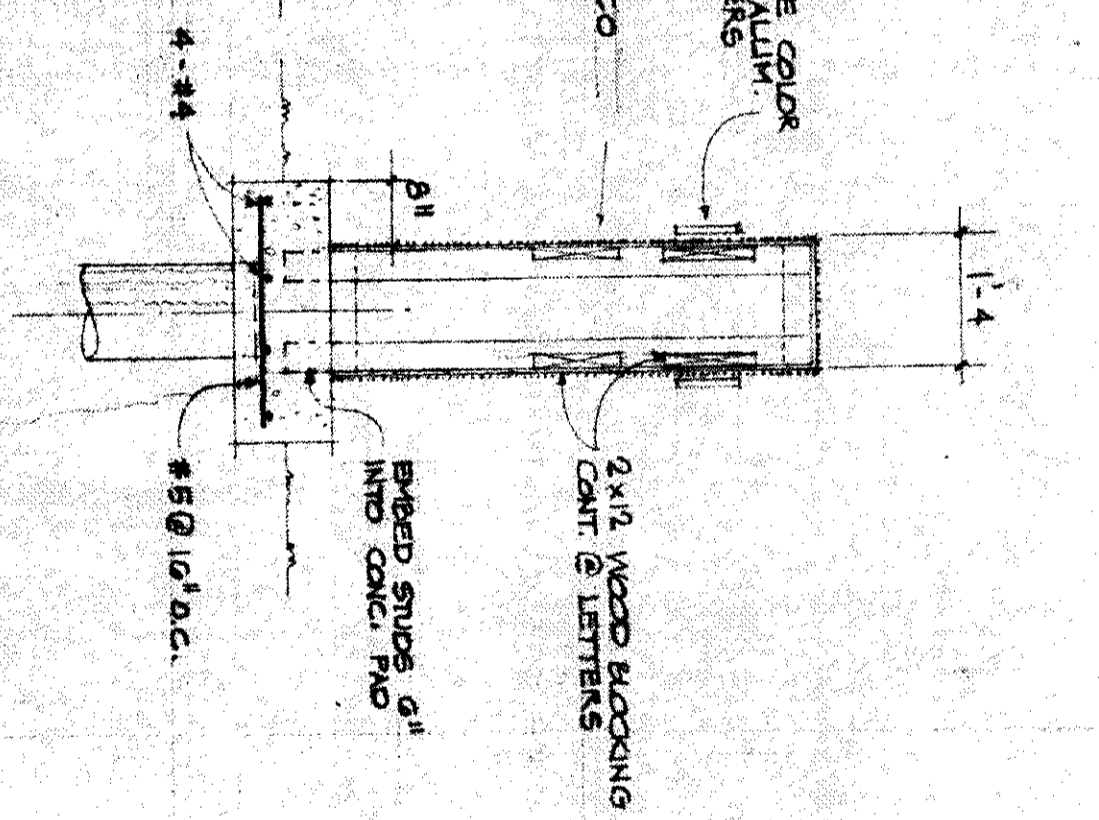
WINDOW TYPES 3 1/2\"/>



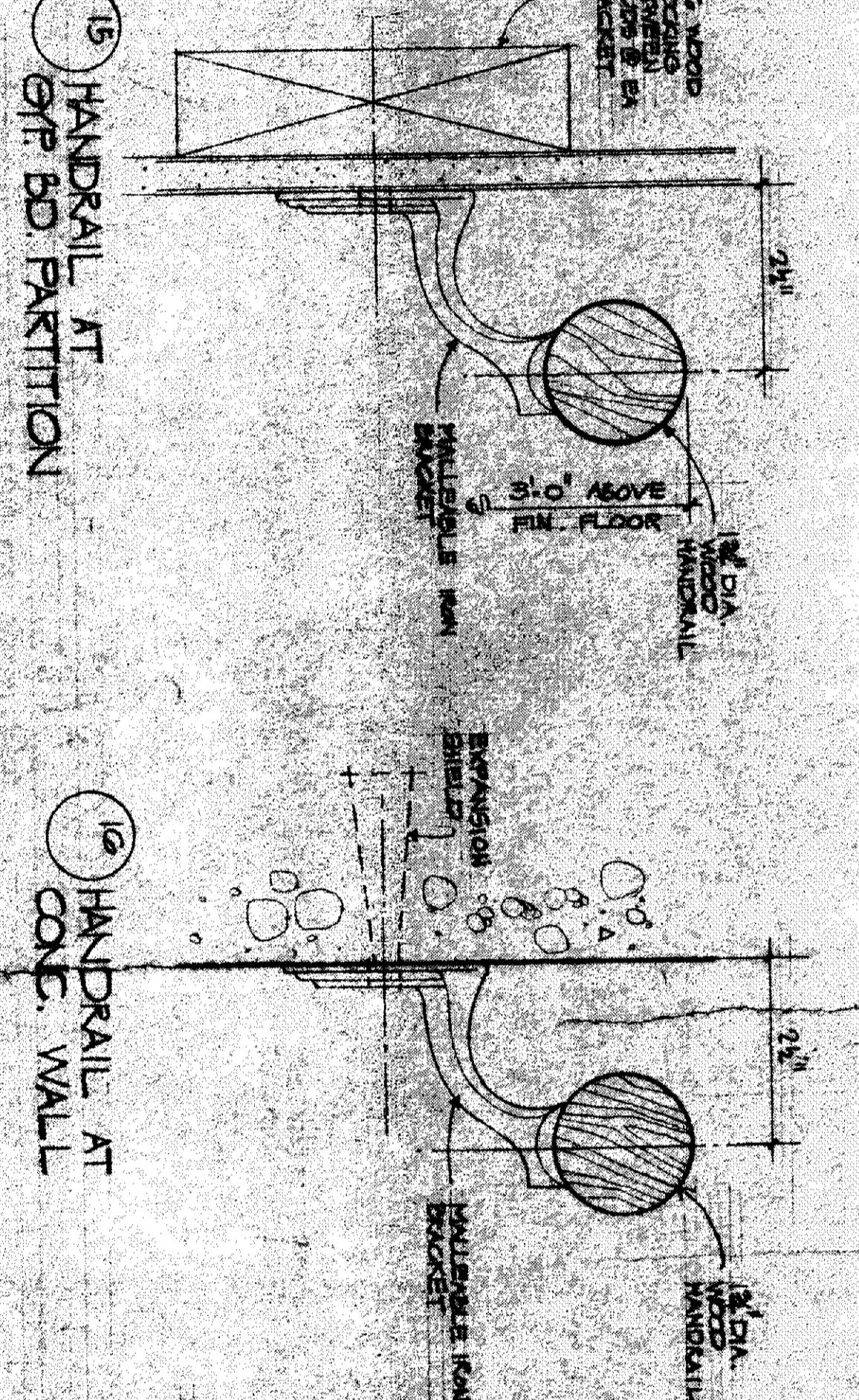
ELEVATION OF ENTRANCE SIGN



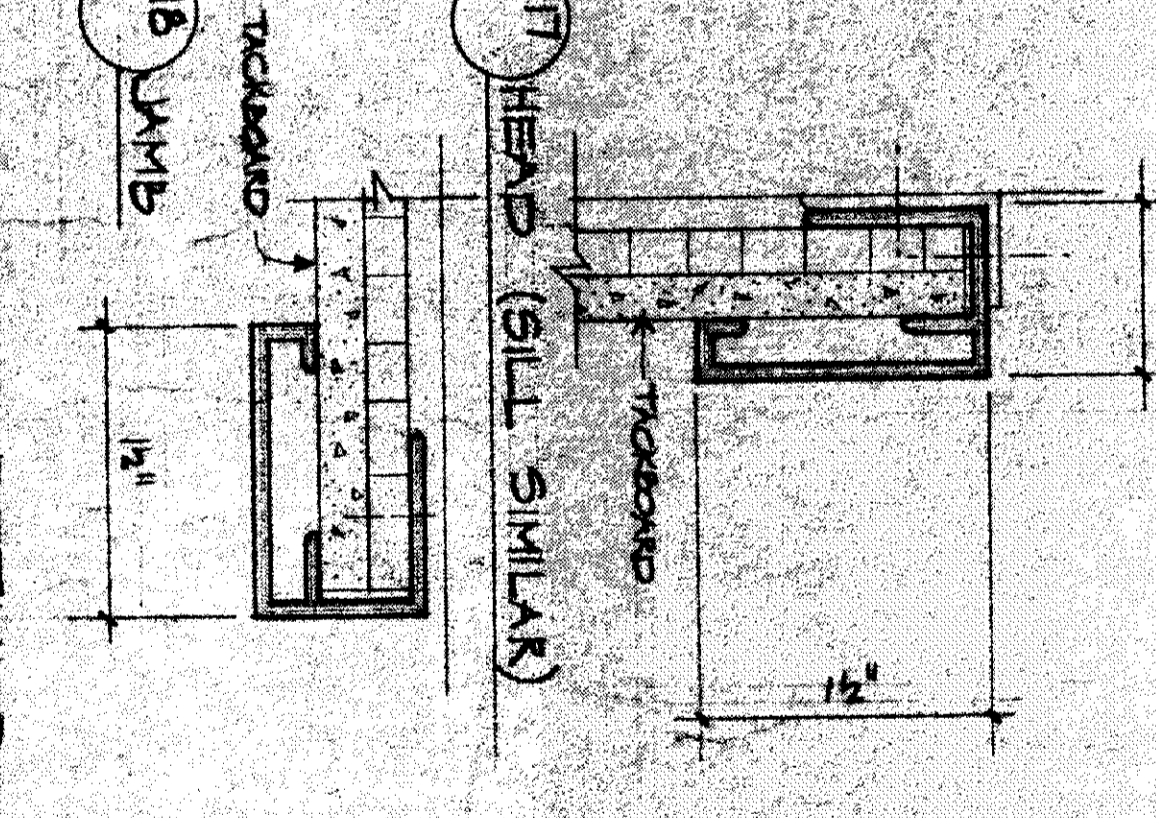
SECTION



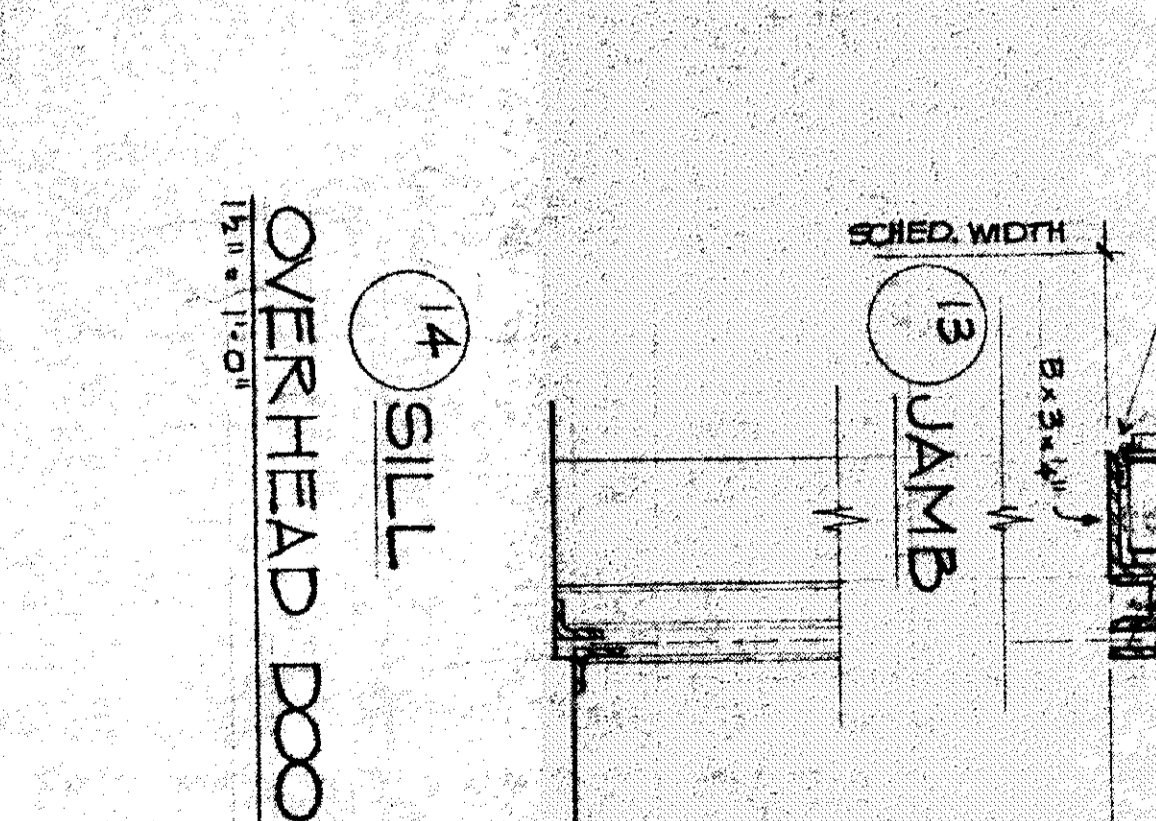
HANDRAIL DETAILS



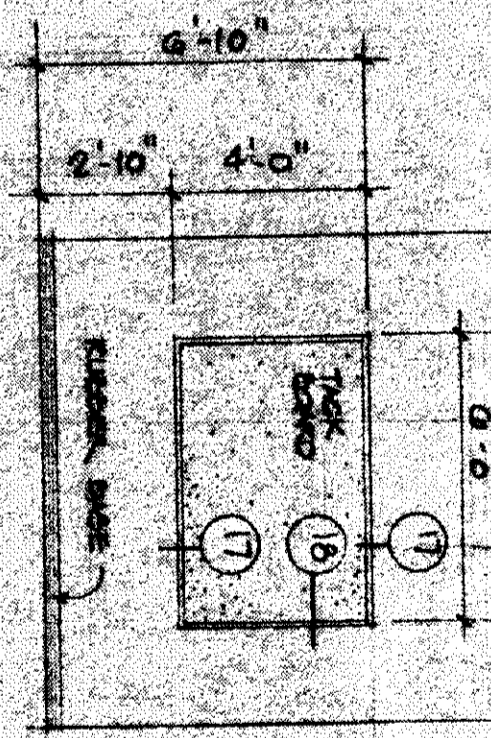
TACKBOARD DETAILS



OVERHEAD DOOR DETAILS



ELEV. & TACKBOARD



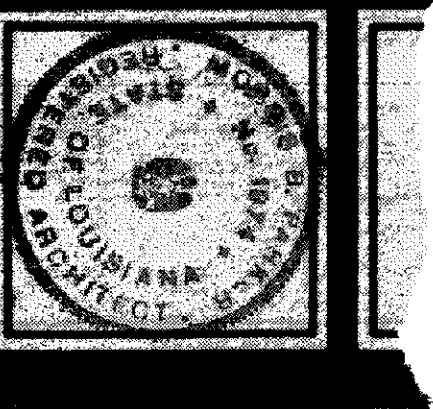
These plans and specifications have been prepared by me or under my direct supervision and to the best of my knowledge and belief, they comply with all City requirements.

Morris B. Parker
 MORRIS B. PARKER
 License No. 1974

NOTICE
 The Awarding of the contract for the construction of Forest Towers East Apartments and shall not be construed as an endorsement or approval of any product or material used in the construction of the same without the expressed written consent of Parker-Croston Associates.

FOREST TOWERS EAST APARTMENTS
 for
FOREST TOWERS EAST INC.
 NEW ORLEANS, LOUISIANA

PARKER - CROSTON ASSOCIATES
 ARCHITECTS • ENGINEERS • PLANNERS
 FORT WORTH, TEXAS



11 OF 52
 SHEET NO. 11
 JOB NO. 1737
 DATE 12.14.75
 DRAWN BY
 CHECKED MBP