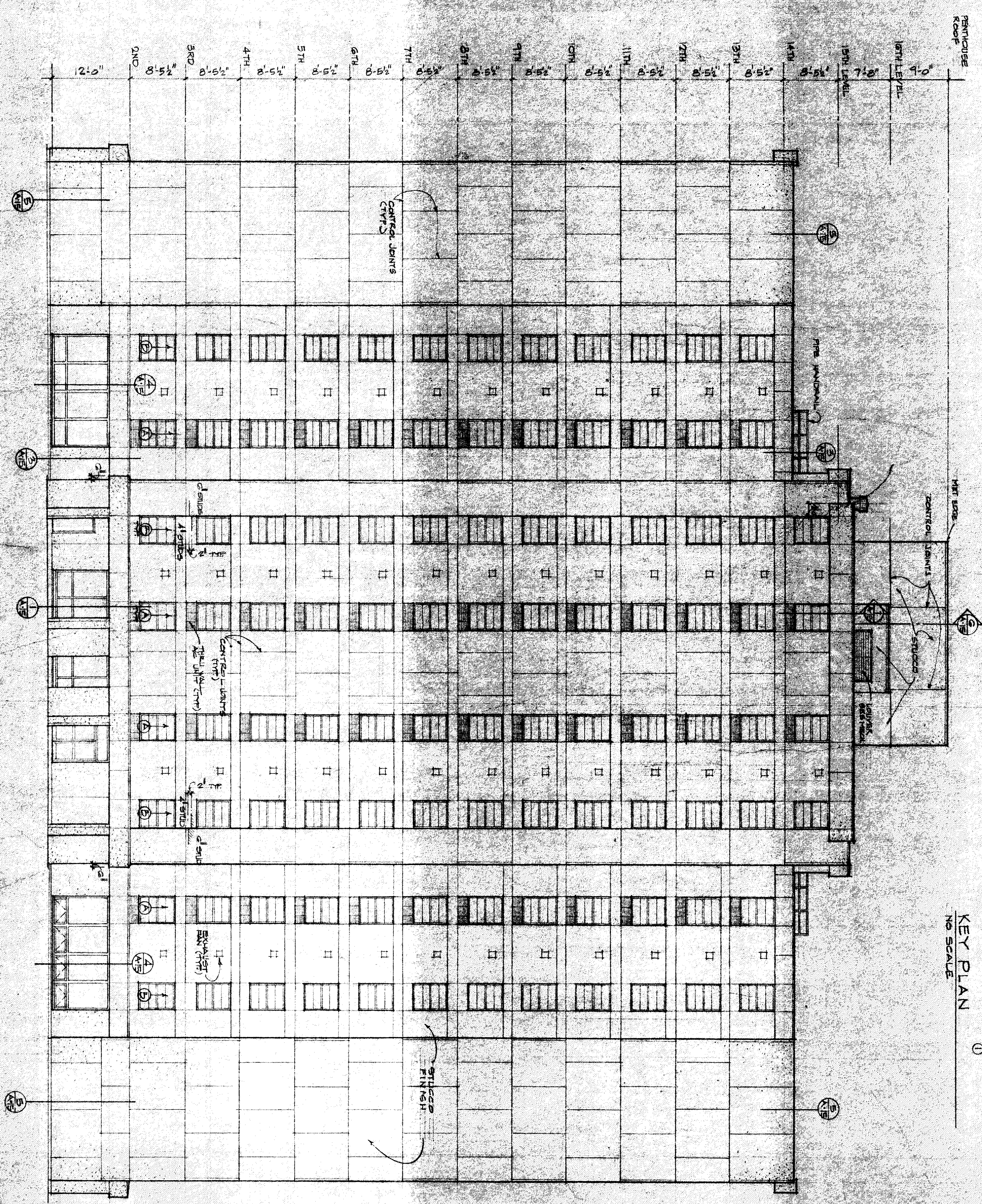
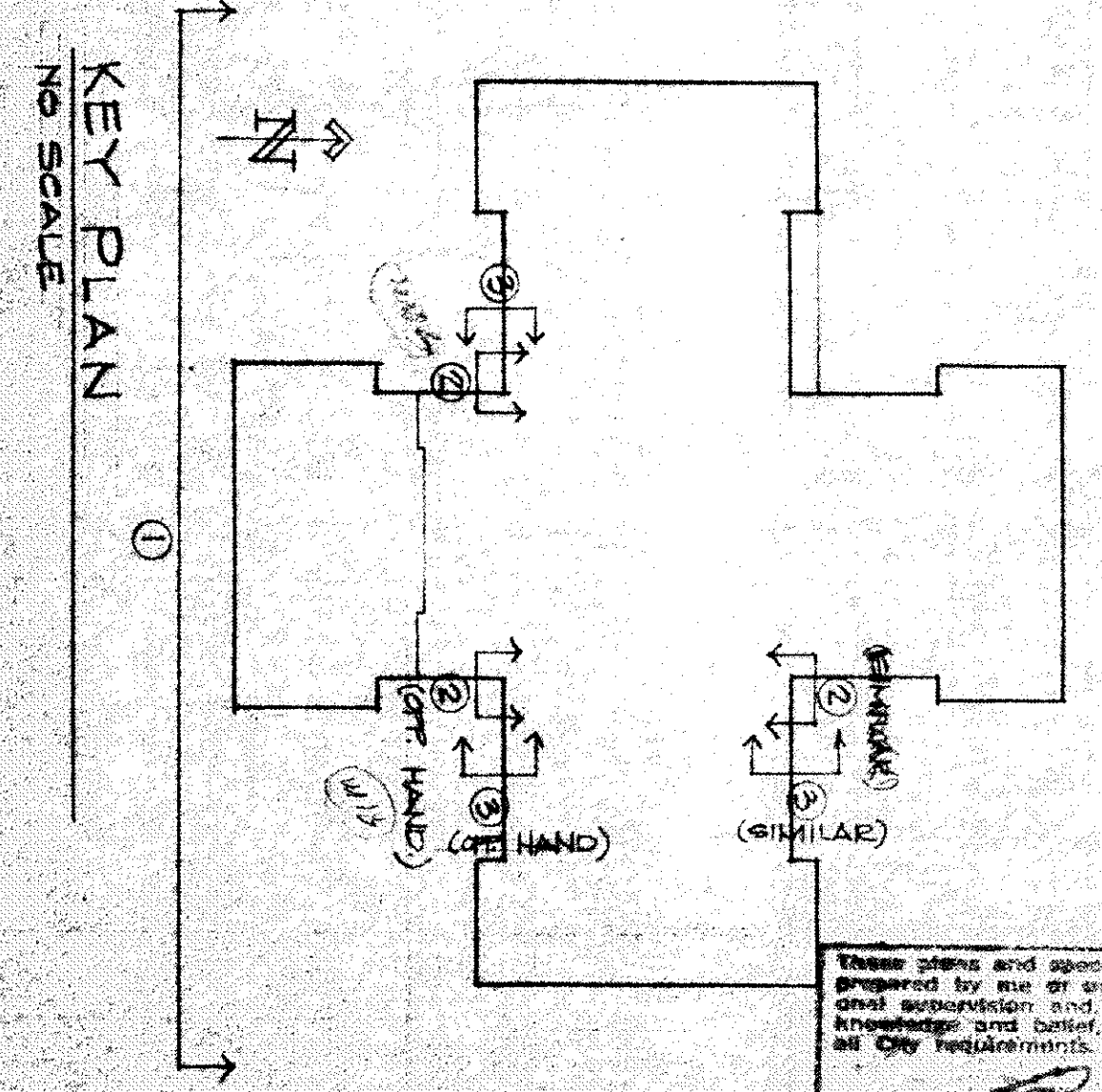


3 PARTIAL ELEV SCALE: 1/8" = 1'-0"
 2 PARTIAL ELEV SCALE: 1/8" = 1'-0"



1 SOUTH ELEVATION SCALE: 1/8" = 1'-0"



These plans and specifications have been prepared by me or under my close personal supervision and to the best of my knowledge and belief, they comply with all CIP requirements.

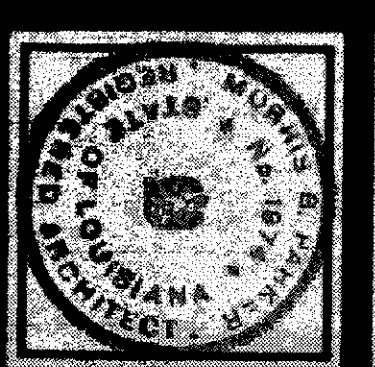
Morris B. Parker
 MORRIS B. PARKER
 License No. 1974

NOTICE
 This drawing is the exclusive property of Parker-Croston Associates and shall not be used or reproduced for any purpose without the express written consent of Parker-Croston Associates.

REVISED 1-31-76

FOREST TOWERS EAST APARTMENTS
 for
FOREST TOWERS EAST INC.
 NEW ORLEANS LOUISIANA

PARKER - CROSTON ASSOCIATES
 ARCHITECTS • ENGINEERS • PLANNERS
 FORT WORTH TEXAS



DATE: A.12
 JOB NO: 7703
 P.L.T. 4/2/76
 DRAWN BY: [Name]
 CHECKED BY: [Name]