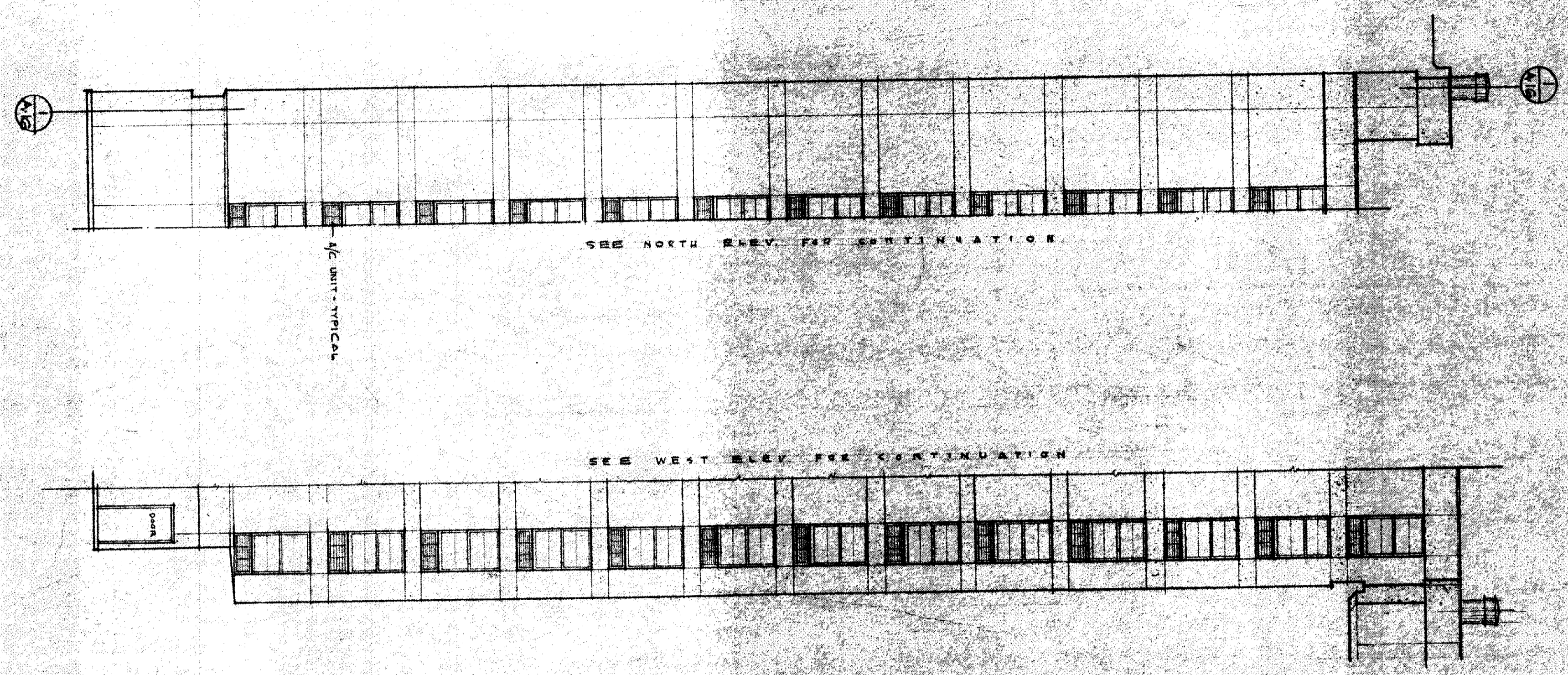
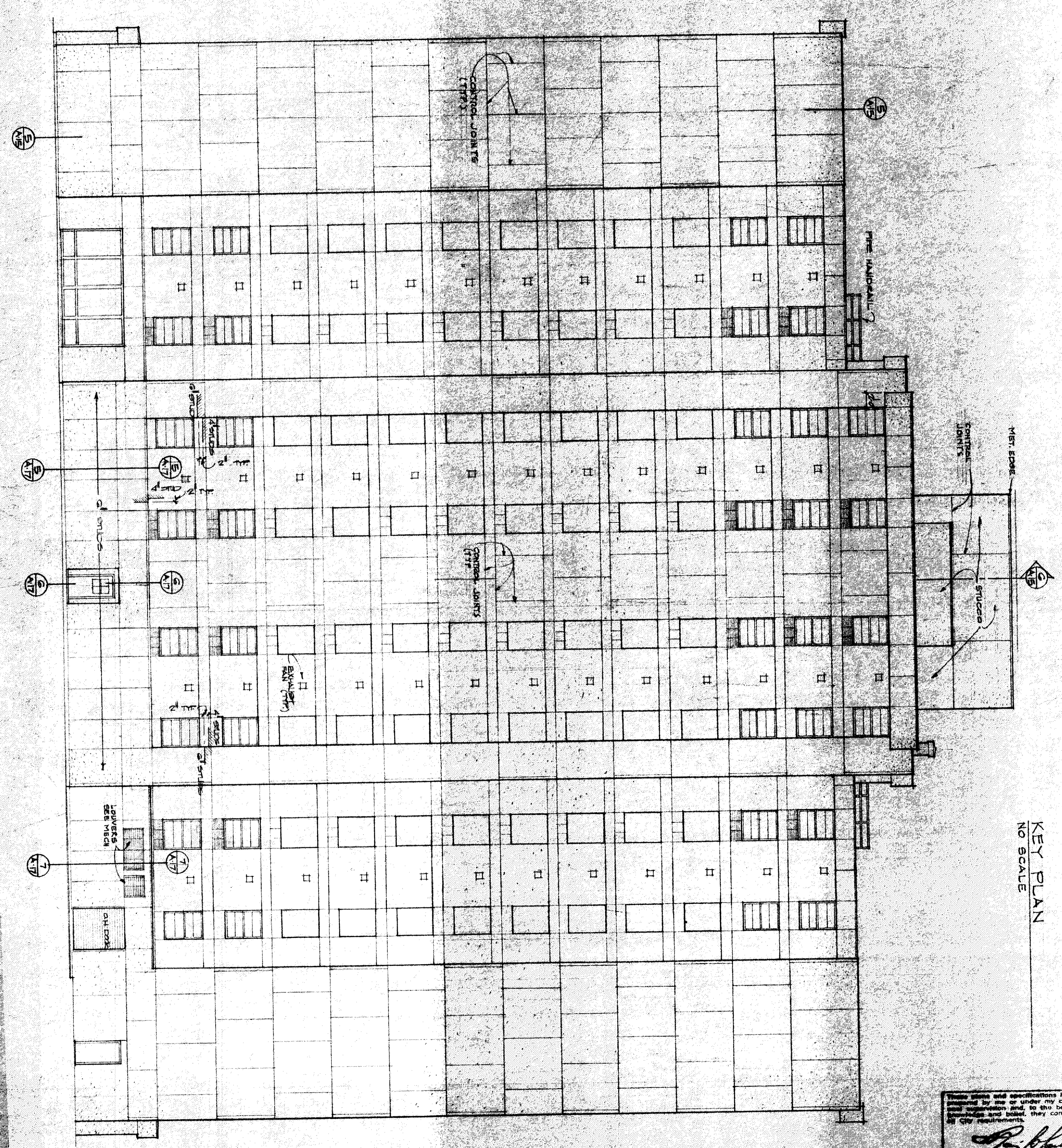


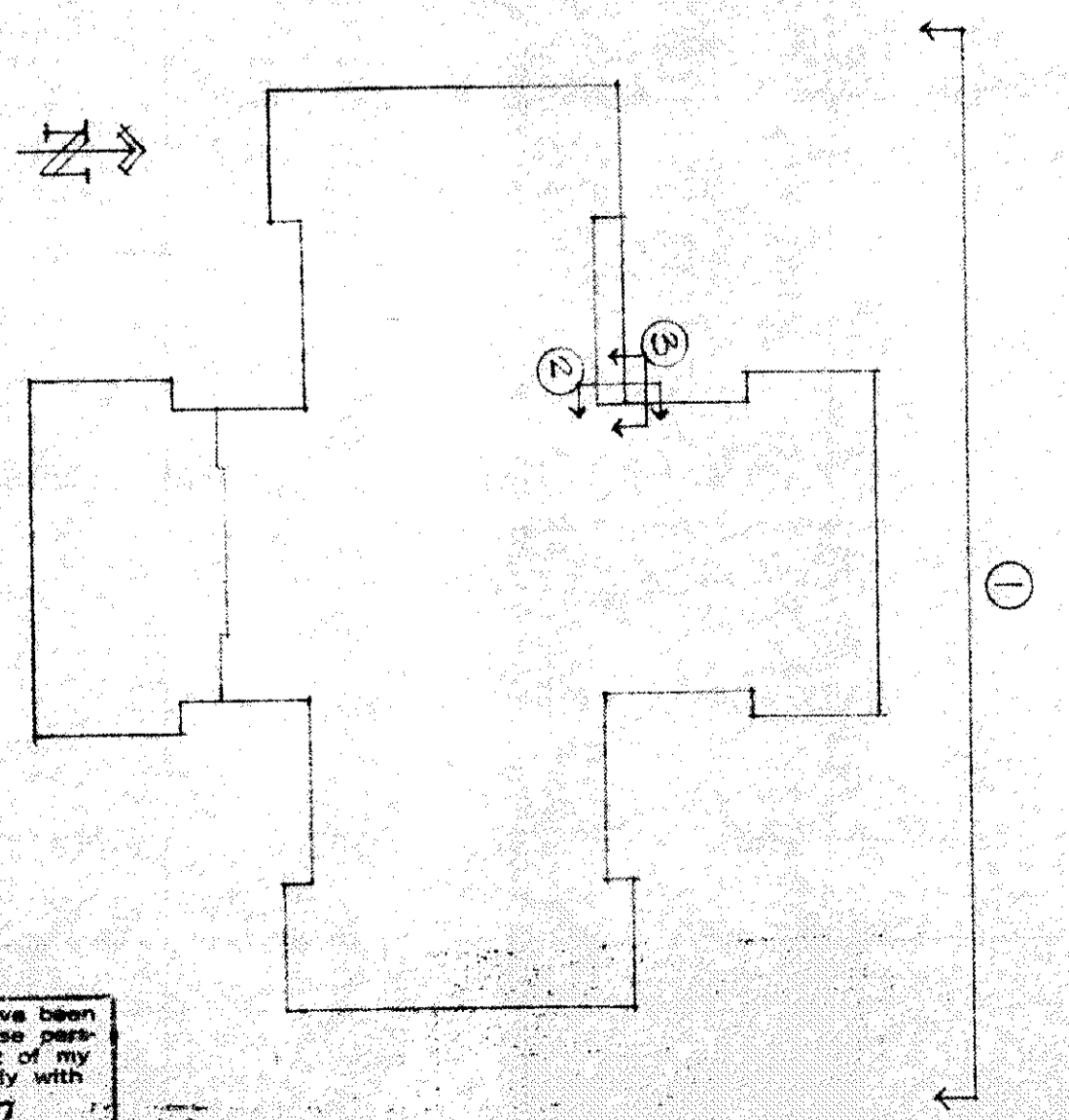
3 PARTIAL ELEV. 2 PART ELEV.
SCALE: 1/8" = 1'-0"



1 NORTH REAR ELEVATION
SCALE: 1/8" = 1'-0"



NOTICE
This drawing is the architect's property and shall not be reproduced, stored in a retrieval system, or transmitted in any form or by any means, electronic, mechanical, photocopying, recording, or by any information storage and retrieval system, without the expressed written consent of Parker-Croston Associates.

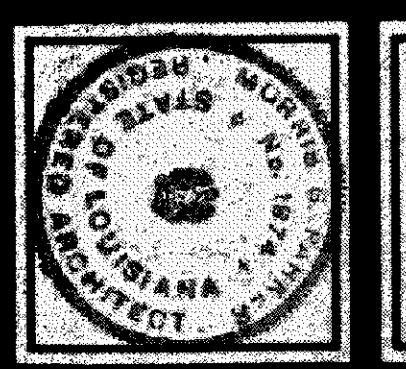


These plans and specifications have been prepared by me or under my close personal supervision and to the best of my knowledge and belief, they comply with all City requirements.
D. H. Parker
DORIS B. PARKER
License No. 2774

REVISED 7-31-76

FOREST TOWERS EAST APARTMENTS
for
FOREST TOWERS EAST INC.
NEW ORLEANS LOUISIANA

PARKER - CROSTON ASSOCIATES
ARCHITECTS • ENGINEERS • PLANNERS
FORT WORTH TEXAS



11 SHEET NO. **A-14**
OF 21A SHEETS

JOB NO. 71725
DATE 1-14-76
DRAWN BY: MCH
CHECKED BY: JSP