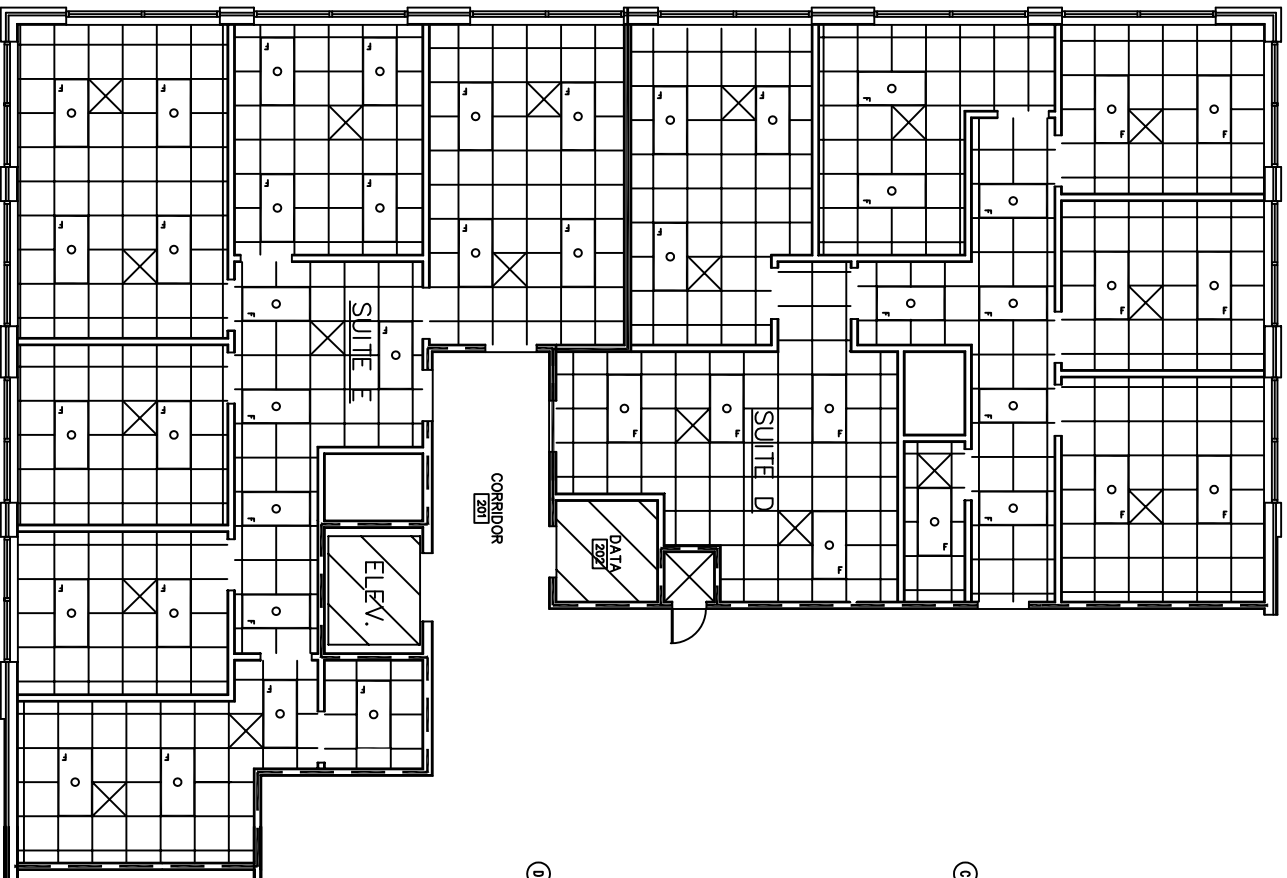
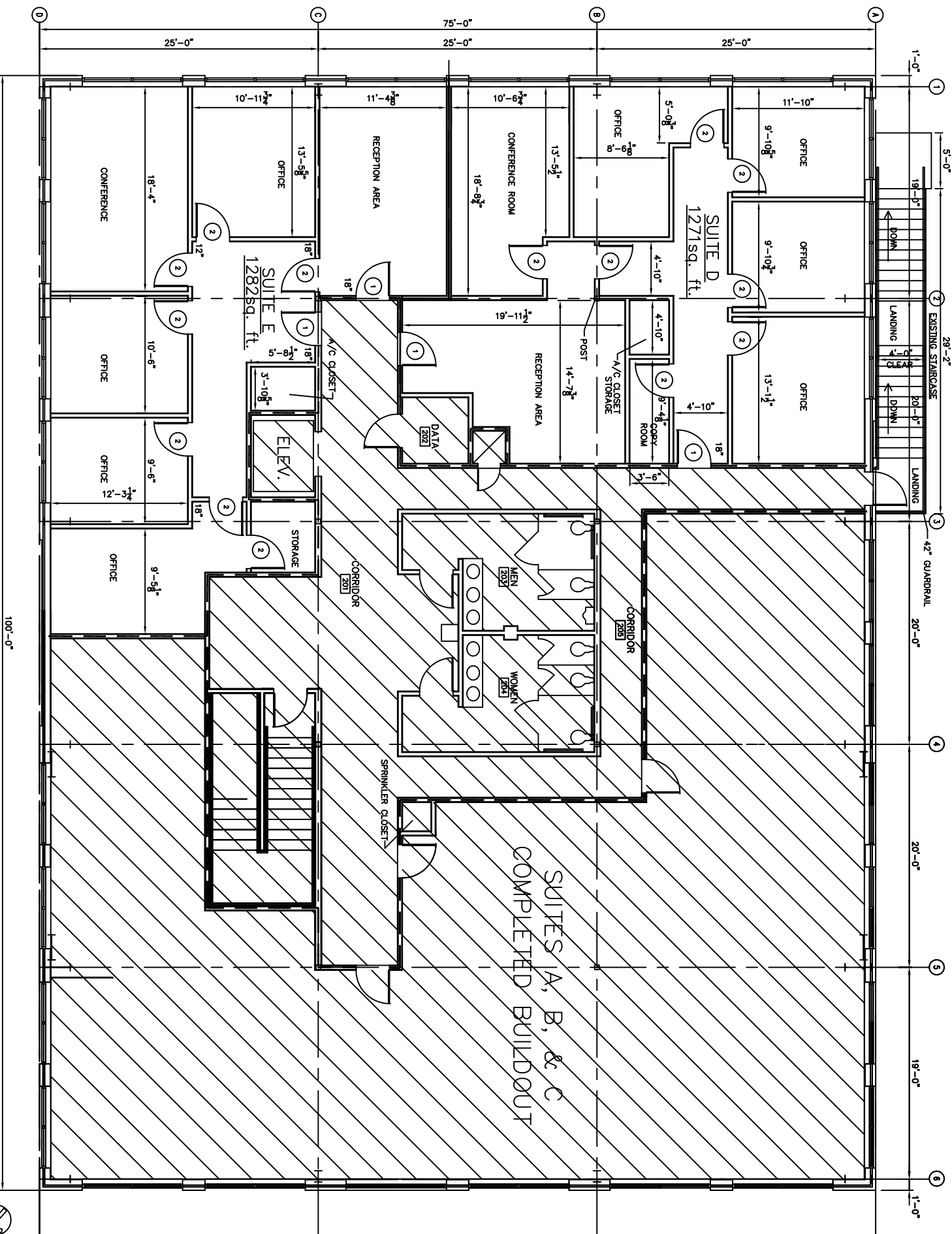


NAME	FLOOR	BASE	WALL	CEILING	REMARKS
OFFICES		● VCT			
		● CONC. W/SEALER			
		● CERAMIC TILE			
		● CONCRETE			
		● VINYL BASE			
		● CERAMIC TILE			
		● NONE			
		● GYP.BD			
		● CERAMIC TILE			
		● GYP.BD. PAINTED			
		● 2'x2' SUSP. ACOUST.			
		● CLG. HGT.			
		● 10'-0"			

DOOR & HARDWARE SCHEDULE		REMARKS
NO.	TYPE	
1	SOLID WOOD	
2	HOLLOW MTL.	
3	STOREFRONT	
	STEEL	
	ALUMINUM	
	WOOD	
	DBL SWING	
	BUTT	
	PASSAGE	
	PRIVACY	
	DEADBOLT	
	KEYED HANDLE	
	PUSH PULL	
	THRESHOLD	
	WEATHERSTRIP	
	DOOR STOP	
	CLOSER	
		20 MIN RATED



2 PARTIAL 2ND FLOOR PLAN REFLECTED CEILING  
A-1 NOT TO SCALE



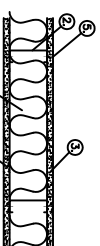
1 FLOOR PLAN-SECOND FLOOR  
A-1 3/16"=1'-0"

THIS FLOOR FULLY SPRINKLED

AREA BY USE  
SUITE D = 1,271 SQ. FT.  
SUITE E = 1,282 SQ. FT.  
TOTAL = 2,553 SQ. FT.

UL NOTES:

- FLOOR AND CEILING FINISHES (NOT SHOWN) 25 MGS MIN. GALV. STEEL, 1" HIGH, RETURN LEGS 3/8" (MIN.), ATTACHED TO FLOOR AND CEILING WITH FASTENERS
- STEEL STUDS:-  
3-5/8" WIDE (MIN.), 1-1/4" LEGS, 3/8" RETURN, FORMED OF 25 MGS GALV. STEEL, MAX. SPACING 24" O.C.
- Gypsum wallboard:-  
5/8" THICK, 4" WIDE, ATTACHED TO STEEL STUDS AND FLOOR AND CEILING TRACK WITH 1" LONG TYPE "S" SELF-PENETRATING 1/2" O.C. IN THE FIELD OF THE BOARD. JOINTS ORIENTED VERT. AND STAGGERED ON OPPOSITE SIDES OF THE ASSEMBLY.
- BATTES AND BLANKETS:-  
MINERAL WOOL INSULATION, PARTIALLY OR COMPLETELY FILLING STUD CAVITY.
- JOINT AND TAPE COMPOUND:-  
VINYL DRY OR PREMIER JOINT COMPOUND, APPLIED IN TWO COATS IN FIRST LAYER OF COMPOUND OVER ALL JOINTS, AS AN ALTERNATE TO NOMINAL 3/32" THICK GYPSUM VENEER PLASTER MAY BE APPLIED TO THE ENTIRE SURFACE OF CLASSIFIED VENEER BASEBOARD. JOINT REMOVED.



ONE HOUR FIRE WALL  
N.T.S.

C.N.S. INVESTMENTS CORP.  
**DAMMON ENGINEERING, INC.**  
 ARCHITECTS - ENGINEERS  
 2000 OLD SPANISH TRAIL, STE 100 985-649-5832 SLIDELL, LA. 70458  
 DAMMONENGINEERING.COM

2ND FLOOR BUILD-OUT  
 K.B. KAUFMANN & CO., INC.  
 OAK HARBOR SUBDIVISION  
 SLIDELL, LOUISIANA

SCALE: AS NOTED  
 FILE: \_\_\_\_\_  
 JOB NO. 1517B  
 DATE: 10-18-05  
 SHEET  
 A-1  
 OF