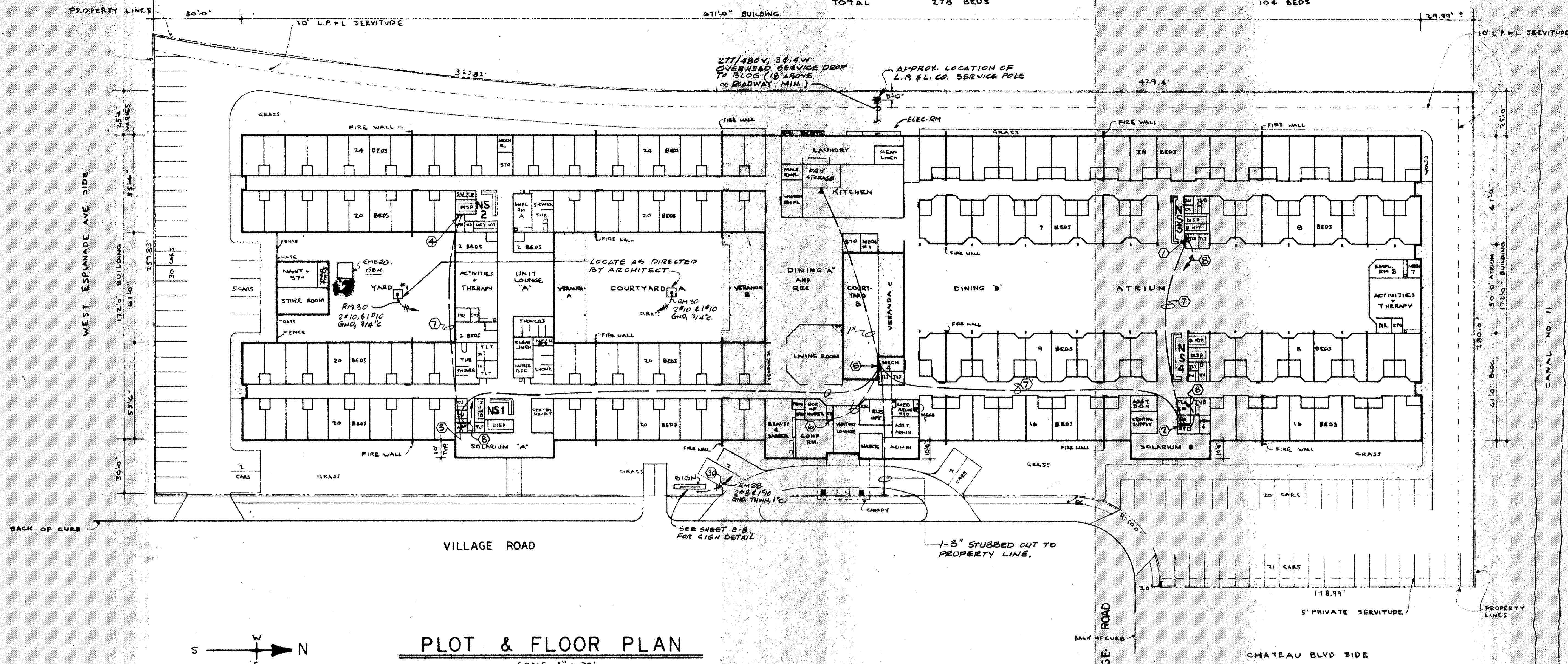


LEFT WING 174 BEDS - ALL SEMI-PRIVATE

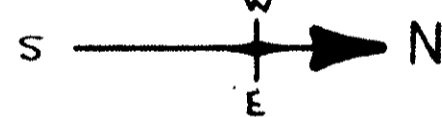
BUILDING TOTAL = 34 PRIVATE
244 SEMI-PRIVATE
TOTAL 278 BEDS

RIGHT WING 34 PRIVATE
70 SEMI-PRIVATE
104 BEDS



PLOT & FLOOR PLAN

SCALE 1" = 30'



TABULATION

CAPACITY 278 BEDS
NOTE: IF THE 34 PRIVATE WERE CONVERTED TO SEMI-PRIVATE, CAPACITY = 312 BEDS.

BUILDING AREA = 89,582 SQ. FT. (322 SQ. FT./ BED)
ATRIUM AREA = 13,456 SQ. FT.

SITE AREA = 184,298 SQ. FT.
BLDG. COVERS 48% OF SITE EXCLUDING ATRIUM
BLDG. COVERS 55% OF SITE INCLUDING ATRIUM

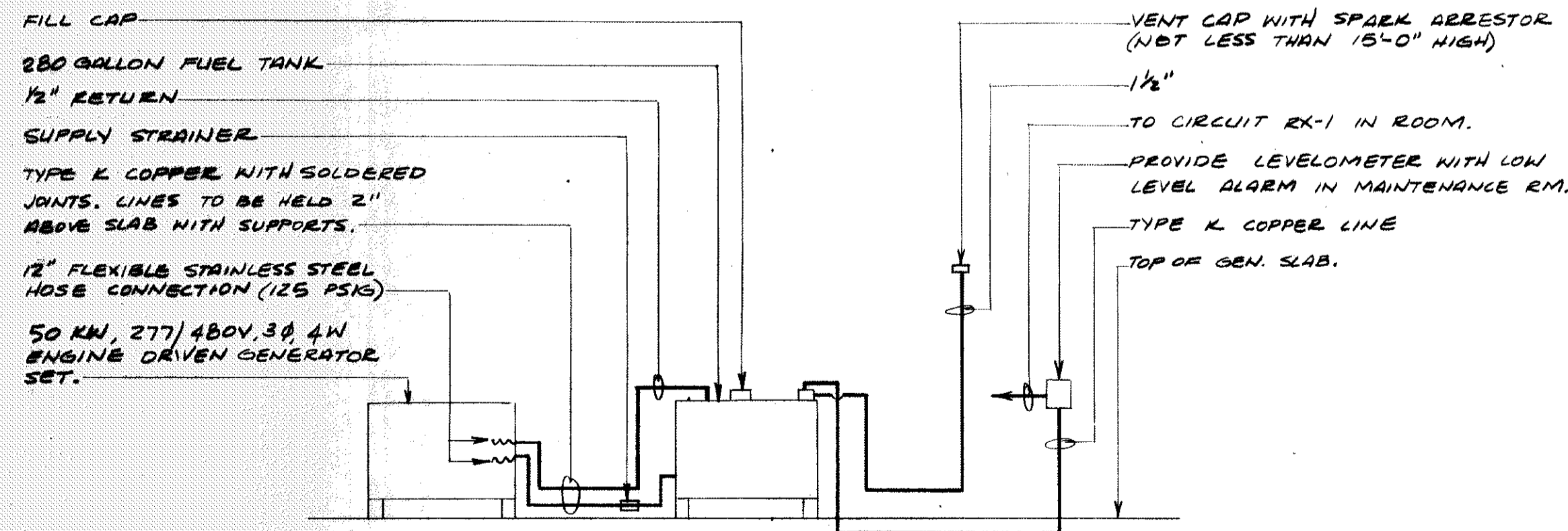
46 PARKING SPACES REQUIRED BY KENNER CODE
58 PARKING SPACES REQUIRED BY STATE CODE
82 PARKING SPACES PROVIDED

GENERAL NOTES:

- FIRE ALARM SYSTEM**
 - Furnish and install one Edwards Model 5701-C1 Remote Station Module in the Edwards Fire Alarm Control Panel for transmitting alarm signal to remote Central Station on Amy Boulevard when Fire Alarm Panel is placed in the alarm condition. Arrange with Pratt Laundry Associates, Inc., to provide the required additional equipment in the Central Fire Station to expand the existing Edwards Control Panel, tie in the telephone pair, check out operation and certify the completed installation.
 - Provide an empty 3/4" conduit in slab with a #14 AWG fish wire from the fire alarm control panel to telephone terminal board #15 for telephone company connection to fire alarm control panel.
 - The owner shall arrange with South Central Bell to provide one continuous metallic telephone pair of wires with a minimum resistance to ground of 200,00 OHMS and a minimum resistance of 40,000 OHMS line to line with both ends open, and a maximum loop resistance of 5000 OHMS. The telephone pair must be terminated on screw type terminals at the existing Edwards equipment in the Central Fire Station and at the local Fire Alarm Panel in the Chateau Nursing Home on 716 Village Road, Kenner, Louisiana.
- All wiring for the emergency lighting systems shall be minimum of #10 AWG in size.
- See Sheet E15 for Symbol Schedules and Specific Notes, which apply to all sheets.

SPECIFIC NOTES

- TELEPHONE TERMINAL BOARD #11, 4'x4'x3/4" THICK PLYWOOD, IN STORAGE RM.
- TELEPHONE TERMINAL BOARD #12, 4'x4'x3/4" THICK PLYWOOD, LOCATED IN STGE. RM.
- TELEPHONE TERMINAL BOARD #13, 4'x4'x3/4" THICK PLYWOOD, LOCATED IN JAN. RM.
- TELEPHONE TERMINAL BOARD #14, 4'x4'x3/4" THICK PLYWOOD, LOCATED IN JAN. RM.
- TELEPHONE TERMINAL BOARD #15, 4'x8'x3/4" THICK PLYWOOD, LOCATED IN MECH. RM. #4
- FOR OWNERS TELEPHONE COMPANY EQUIP. 4'x8'x3/4" THICK PLYWOOD, #16
- 2" EMPTY CONDUIT WITH PULL WIRES FOR S.C.B.T. CO. SERVICE TO BLDG.
- 3/4" EMPTY CONDUIT TO NEAREST ADEQUATE COLD WATER PIPE FOR S.C.B.T. CO. STUB UP CONDUIT 6" BELOW BOTTOM OF TELEPHONE TERMINAL BOARDS.



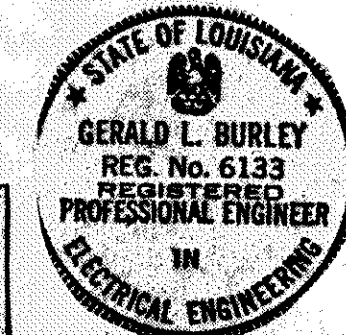
NOTE

ALL LINES AND INSTALLATION SHALL BE AS RECOMMENDED BY THE GENERATOR SET MANUFACTURER AND MEET ALL APPLICABLE NFPA CODES.

GENERATOR TANK AND FUEL LINE DETAIL

NTS

HUDDLESTON & WHITE ARCHITECTS - ENGINEERS
J. M. HUDDLESTON, AIA (504) 887-5250
WILLIAM H. WHITE, P.E. (504) 394-4618
2801 N. HALL ST. METairie, LA 70002



JOB #4383
GERALD L. BURLEY & ASSOCIATES
Consulting Engineers
330 NORTH JEFFERSON DAVIS PARKWAY
NEW ORLEANS, LOUISIANA 70119

DATE: 9/15/83
SHEET NO. E1
OF 64 SHEETS