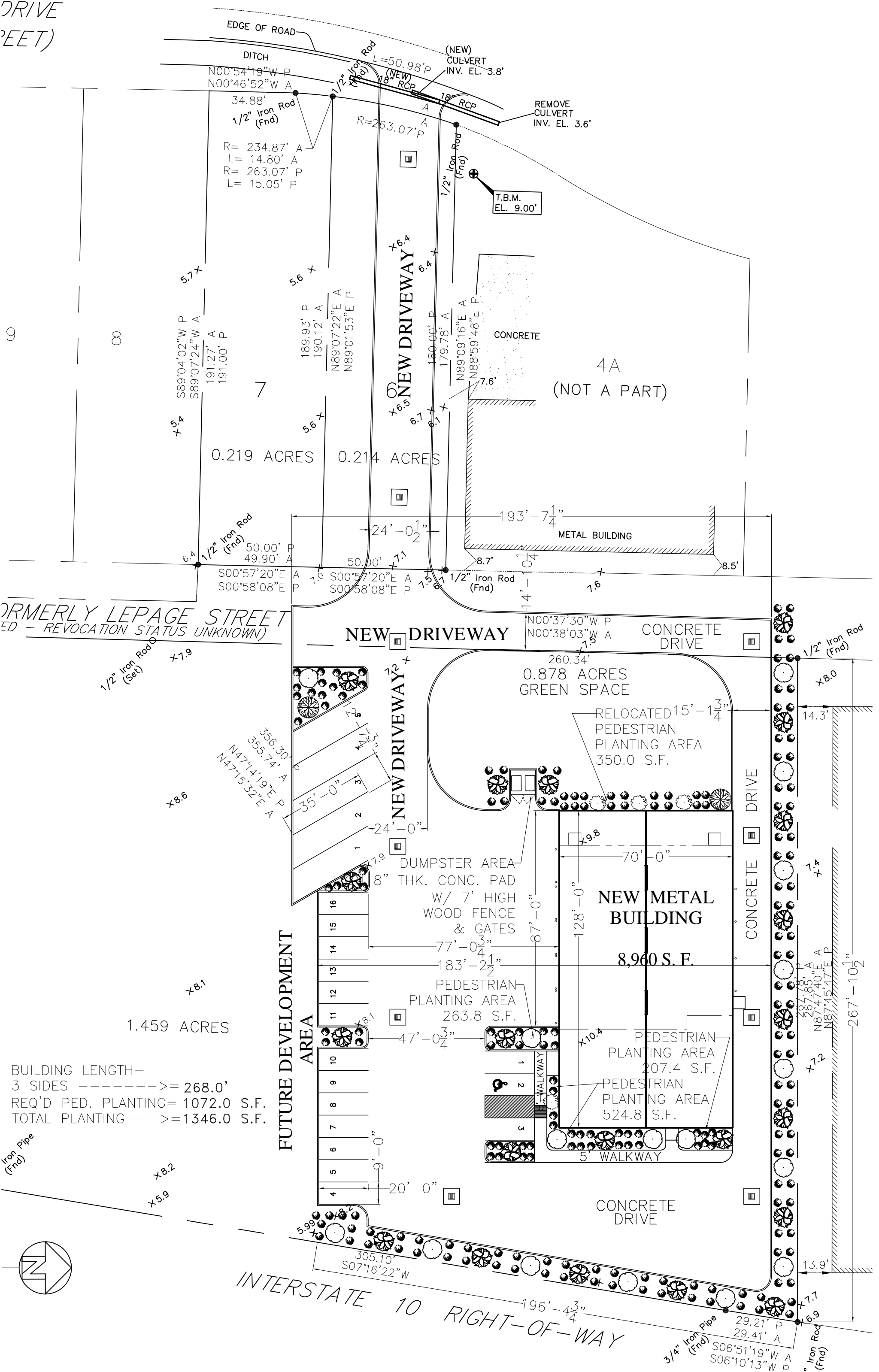
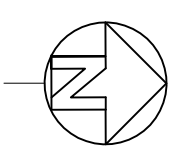


DRIVE
FEET)

9

FORMERLY LEPAGE STREET
(REVOCATION STATUS UNKNOWN)

BUILDING LENGTH—
3 SIDES ----->= 268.0'
REQ'D PED. PLANTING= 1072.0 S.F.
TOTAL PLANTING---->= 1346.0 S.F.



N00°54'19"W P
 N00°46'52"W A
 34.88'
 1/2" Iron Rod (Fnd)
 R= 234.87' A
 L= 14.80' A
 R= 263.07' P
 L= 15.05' P

S89°04'02"W P
 S89°07'24"W A
 191.27' A
 191.00' P
 5.7' +
 5.6' +
 189.93' P
 190.12' A
 N89°07'22"E A
 N89°01'53"E P

50.00' P
 49.90' A
 S00°57'20"E A
 S00°58'08"E P
 1.0
 S00°57'20"E A
 S00°58'08"E P
 1.0

356.30'
 355.74' A
 N47°14'19"E P
 N47°15'32"E A
 35'-0"
 7.3'
 44.73'
 2
 1
 7.9'

16
 15
 14
 13
 12
 11
 10
 9
 8
 7
 6
 5
 4
 9'-0"
 20'-0"
 5.99' +
 305.10'
 S07°16'22"W

196'-43"
 196'-43"
 29.21' P
 29.41' A
 S06°51'19"W A
 S06°10'13"W P
 3/4" Iron Pipe (Fnd)
 2" Iron Rod (Fnd)

NEW DRIVEWAY

NEW DRIVEWAY²

FUTURE DEVELOPMENT AREA

NEW METAL BUILDING

8,960 S.F.

0.878 ACRES GREEN SPACE

RELOCATED 15'-13/4" PEDESTRIAN PLANTING AREA 350.0 S.F.

DUMPSTER AREA 8" THK. CONC. PAD W/ 7' HIGH WOOD FENCE & GATES

PEDESTRIAN PLANTING AREA 263.8 S.F.

PEDESTRIAN PLANTING AREA 207.4 S.F.

PEDESTRIAN PLANTING AREA 524.8 S.F.

CONCRETE DRIVE

5 WALKWAY

METAL BUILDING

4A (NOT A PART)

NEW DRIVEWAY

CONCRETE

(NEW) CULVERT INV. EL. 3.8'

REMOVE CULVERT INV. EL. 3.6'

T.B.M. EL. 9.00'

Iron Pipe (Fnd)

2" Iron Rod (Fnd)

3/4" Iron Pipe (Fnd)

x8.2
x5.9

1/2" Iron Rod (Set) x7.9

x8.6

x8.1

x8.2
x5.9

x7.1
x6.9

1/2" Iron Rod (Set) x7.9

x8.6

x8.1

x8.2
x5.9

x7.1
x6.9

1/2" Iron Rod (Fnd) x8.0

14.3'

7.4'

267.85' P
267.47' A
N87°47'40"E A
N87°45'47"E P

x7.2

13.9'

x7.1
x6.9

2" Iron Rod (Fnd)

1/2" Iron Rod (Fnd) x8.0

14.3'

7.4'

267.85' P
267.47' A
N87°47'40"E A
N87°45'47"E P

x7.2

13.9'

x7.1
x6.9

2" Iron Rod (Fnd)

1/2" Iron Rod (Fnd) x8.0

14.3'

7.4'

267.85' P
267.47' A
N87°47'40"E A
N87°45'47"E P

x7.2

13.9'

x7.1
x6.9

2" Iron Rod (Fnd)

1/2" Iron Rod (Fnd) x8.0

14.3'

7.4'

267.85' P
267.47' A
N87°47'40"E A
N87°45'47"E P

x7.2

13.9'

x7.1
x6.9

2" Iron Rod (Fnd)

1/2" Iron Rod (Fnd) x8.0

14.3'

7.4'

267.85' P
267.47' A
N87°47'40"E A
N87°45'47"E P

x7.2

13.9'

x7.1
x6.9

2" Iron Rod (Fnd)

1/2" Iron Rod (Fnd) x8.0

14.3'

7.4'

267.85' P
267.47' A
N87°47'40"E A
N87°45'47"E P

x7.2

13.9'

x7.1
x6.9

2" Iron Rod (Fnd)

1/2" Iron Rod (Fnd) x8.0

14.3'

7.4'

267.85' P
267.47' A
N87°47'40"E A
N87°45'47"E P

x7.2

13.9'

x7.1
x6.9

2" Iron Rod (Fnd)

1/2" Iron Rod (Fnd) x8.0

14.3'

7.4'

267.85' P
267.47' A
N87°47'40"E A
N87°45'47"E P

x7.2

13.9'

x7.1
x6.9

2" Iron Rod (Fnd)

1/2" Iron Rod (Fnd) x8.0

14.3'

7.4'

267.85' P
267.47' A
N87°47'40"E A
N87°45'47"E P

x7.2

13.9'

x7.1
x6.9

2" Iron Rod (Fnd)

1/2" Iron Rod (Fnd) x8.0

14.3'

7.4'

267.85' P
267.47' A
N87°47'40"E A
N87°45'47"E P

x7.2

13.9'

x7.1
x6.9

2" Iron Rod (Fnd)

1/2" Iron Rod (Fnd) x8.0

14.3'

7.4'

267.85' P
267.47' A
N87°47'40"E A
N87°45'47"E P

x7.2

13.9'

x7.1
x6.9

2" Iron Rod (Fnd)

1/2" Iron Rod (Fnd) x8.0

14.3'

7.4'

267.85' P
267.47' A
N87°47'40"E A
N87°45'47"E P

x7.2

13.9'

x7.1
x6.9

2" Iron Rod (Fnd)

1/2" Iron Rod (Fnd) x8.0

14.3'

7.4'

267.85' P
267.47' A
N87°47'40"E A
N87°45'47"E P

x7.2

13.9'

x7.1
x6.9

2" Iron Rod (Fnd)

1/2" Iron Rod (Fnd) x8.0

14.3'

7.4'

267.85' P
267.47' A
N87°47'40"E A
N87°45'47"E P

x7.2

13.9'

x7.1
x6.9

2" Iron Rod (Fnd)

1/2" Iron Rod (Fnd) x8.0

14.3'

7.4'

267.85' P
267.47' A
N87°47'40"E A
N87°45'47"E P

x7.2

13.9'

x7.1
x6.9

2" Iron Rod (Fnd)

1/2" Iron Rod (Fnd) x8.0

14.3'

7.4'

267.85' P
267.47' A
N87°47'40"E A
N87°45'47"E P

x7.2

13.9'

x7.1
x6.9

2" Iron Rod (Fnd)

1/2" Iron Rod (Fnd) x8.0

14.3'

7.4'

267.85' P
267.47' A
N87°47'40"E A
N87°45'47"E P

x7.2

13.9'

x7.1
x6.9

2" Iron Rod (Fnd)

1/2" Iron Rod (Fnd) x8.0

14.3'

7.4'

267.85' P
267.47' A
N87°47'40"E A
N87°45'47"E P

x7.2

13.9'

x7.1
x6.9

2" Iron Rod (Fnd)

1/2" Iron Rod (Fnd) x8.0

14.3'

7.4'

267.85' P
267.47' A
N87°47'40"E A
N87°45'47"E P

x7.2

13.9'

x7.1
x6.9

2" Iron Rod (Fnd)

1/2" Iron Rod (Fnd) x8.0

14.3'

7.4'

267.85' P
267.47' A
N87°47'40"E A
N87°45'47"E P

x7.2

13.9'

x7.1
x6.9

2" Iron Rod (Fnd)

1/2" Iron Rod (Fnd) x8.0

14.3'

7.4'

267.85' P
267.47' A
N87°47'40"E A
N87°45'47"E P

x7.2

13.9'

x7.1
x6.9

2" Iron Rod (Fnd)

1/2" Iron Rod (Fnd) x8.0

14.3'

7.4'

267.85' P
267.47' A
N87°47'40"E A
N87°45'47"E P

x7.2

13.9'

x7.1
x6.9

2" Iron Rod (Fnd)

1/2" Iron Rod (Fnd) x8.0

14.3'

7.4'

267.85' P
267.47' A
N87°47'40"E A
N87°45'47"E P

x7.2

13.9'

x7.1
x6.9

2" Iron Rod (Fnd)

1/2" Iron Rod (Fnd) x8.0

14.3'

7.4'

267.85' P
267.47' A
N87°47'40"E A
N87°45'47"E P

x7.2

13.9'

x7.1
x6.9

2" Iron Rod (Fnd)

1/2" Iron Rod (Fnd) x8.0

14.3'

7.4'

267.85' P
267.47' A
N87°47'40"E A
N87°45'47"E P

x7.2

13.9'

x7.1
x6.9

2" Iron Rod (Fnd)

1/2" Iron Rod (Fnd) x8.0

14.3'

7.4'

267.85' P
267.47' A
N87°47'40"E A
N87°45'47"E P

x7.2

13.9'

x7.1
x6.9

2" Iron Rod (Fnd)

1/2" Iron Rod (Fnd) x8.0

</