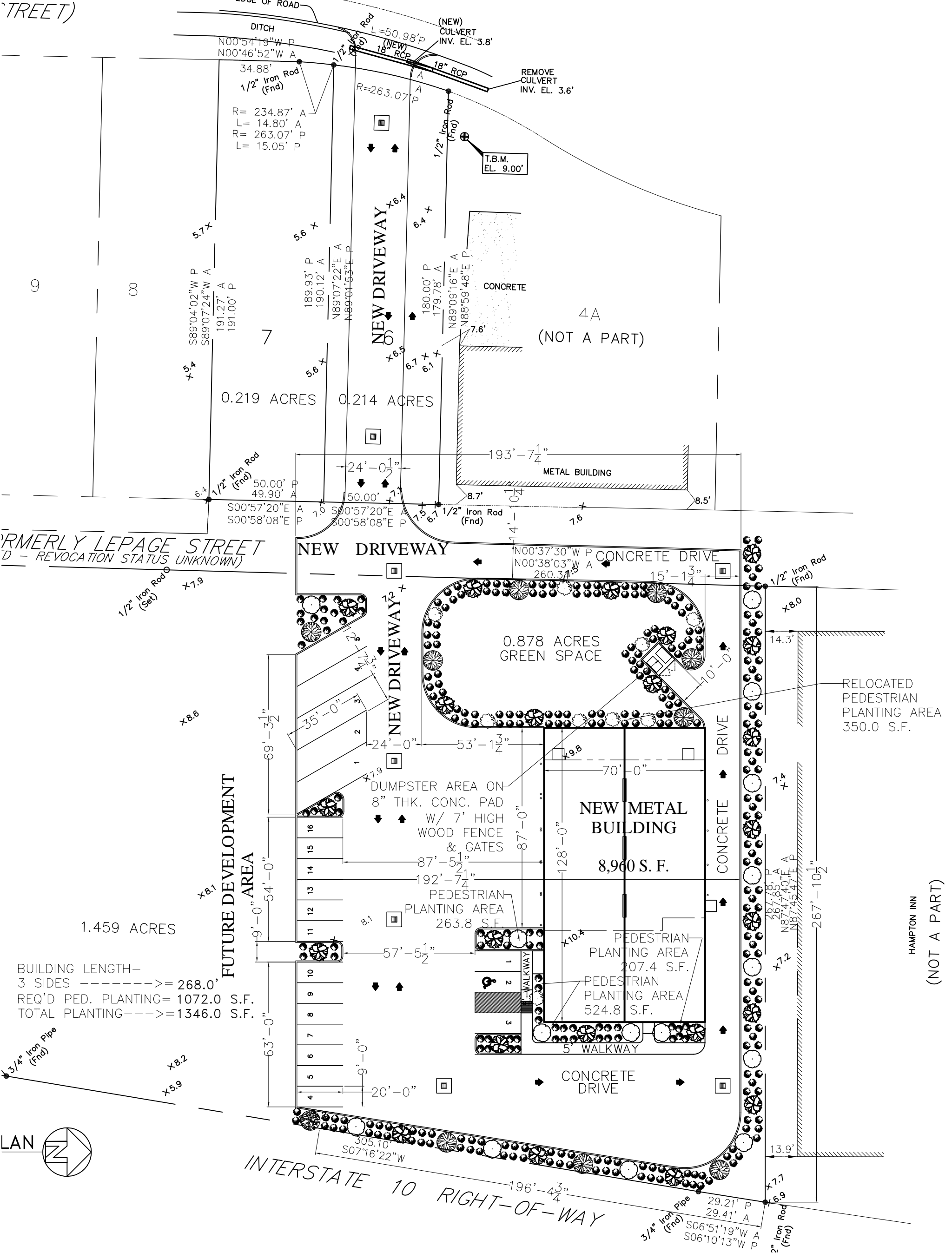


V DRIVE  
(STREET)

FORMERLY LEPAGE STREET  
(REVOCATION STATUS UNKNOWN)



0.219 ACRES 0.214 ACRES

0.878 ACRES GREEN SPACE

1.459 ACRES

BUILDING LENGTH—  
3 SIDES ----->= 268.0'  
REQ'D PED. PLANTING= 1072.0 S.F.  
TOTAL PLANTING----->= 1346.0 S.F.

FUTURE DEVELOPMENT  
AREA

NEW METAL BUILDING  
8,960 S.F.

RELOCATED PEDESTRIAN  
PLANTING AREA  
350.0 S.F.

INTERSTATE 10 RIGHT-OF-WAY

HAMPTON INN

(NOT A PART)

4A  
(NOT A PART)