

SQUARE FOOTAGE LOT ONLY:

LOT TOTAL	= 12,879 sq. ft.
BUILDING FOOTPRINT	= 2,711 sq. ft.
VEHICULAR USE	= 2,742 sq. ft.
LANDSCAPE/GREEN SPACE	= 2,132 sq. ft.
TOTAL SQUARE FOOTAGE INCLUDING RIGHT OF WAY USE:	
VEHICULAR USE	= 7,240 sq. ft.
LANDSCAPE/GREEN SPACE	= 3,240 sq. ft.

PARKING REQUIREMENTS:

PROPOSED BUILDING:

1st FLOOR	= 4,208 sq. ft.
2nd FLOOR	= 6,222 sq. ft.
3rd FLOOR	= 6,222 sq. ft.
4th FLOOR	= 6,222 sq. ft.

1st FLOOR RESTAURANT 2,708/100-10 PARKING SPOTS
2nd FLOOR OFFICE 3,622/200-8 PARKING SPOTS
TOTAL PARKING PROVIDED ON SITE 1342 HANDICAPPED = 18
TOTAL PARKING PROVIDED INCLUDING RIGHT OF WAY 1742 HANDICAPPED = 19

LEGEND

	- EXIST. WATER LINE
	- EXIST. SEWER LINE
	- EXIST. ELECTRICAL LINE OR CONDUIT
	- EXIST. DRAIN LINE
	- PROPERTY LINE
	- SETBACK LINE
	- LANDSCAPING
	- EXISTING CHAINLINK OR WOODEN FENCE
	- NEW BUILDING
	- PARKING
	- HANDICAPPED PARKING
	- EXIST. SIGN
	- EXIST. LIGHT POLE
	- EXIST. TREE OR SHRUB
	- EXIST. CATCH BASIN
	- EXIST. DRAIN INLET
	- EXIST. POWER OR TELEPHONE POLE
	- EXIST. SEWER MANHOLE
	- EXIST. DRAIN MANHOLE
	- EXIST. SEWER CLEAN-OUT
	- EXIST. FIRE HYDRANT
	- EXIST. WATER VALVE
	- EXIST. GAS VALVE
	- EXIST. WATER METER

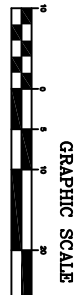
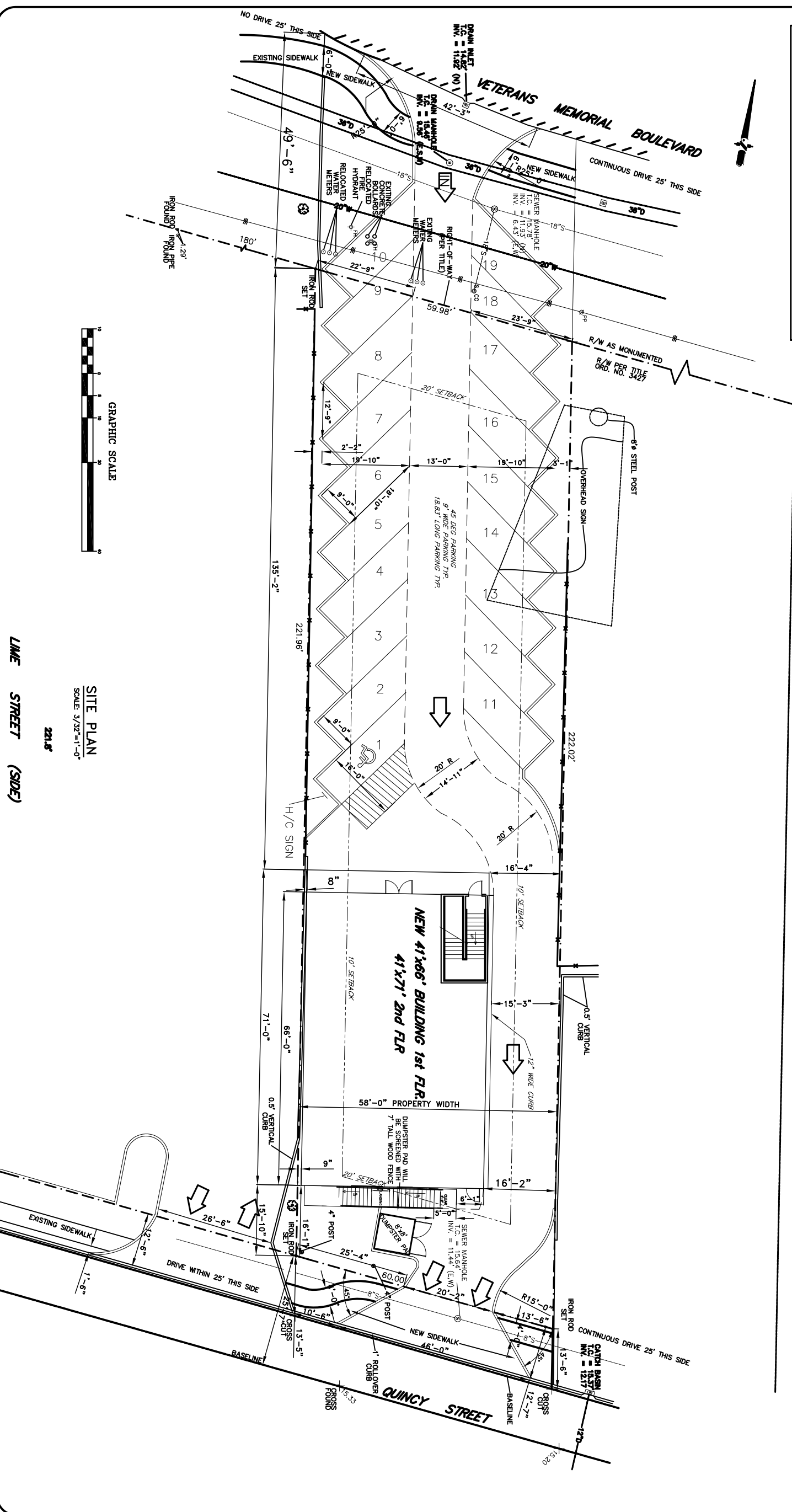
CPZ CERTIFICATION

DOCKET NO. _____ SUMMARY NO. _____
has been reviewed by the Department of Planning.

DIRECTOR _____ DATE _____

ORDINANCE NO. _____ DATE _____
has been approved by the Jefferson Parish Council.

CHAIRMAN _____ DATE _____



SITE PLAN
SCALE: 3/32" = 1'-0"

LIME STREET (SIDE)

REVISION 2, 10-23-08
SCALE: AS NOTED
FILE: _____
JOB NO. _____
DATE: 9-21-06
SHEET 3
C-2
OF 5

ON LEONG CHINESES MERCHANT CHARITABLE ASSOC.

DAMMON ENGINEERING, INC.

1095 FLORIDA AVENUE 985-649-5832 SLIDELL, LA. 70458
DAMMONENGINEERING.COM

SITE PLAN

SHUNG CHUNG
4622 VETERANS BLVD.
METAIRIE, LOUISIANA 70006