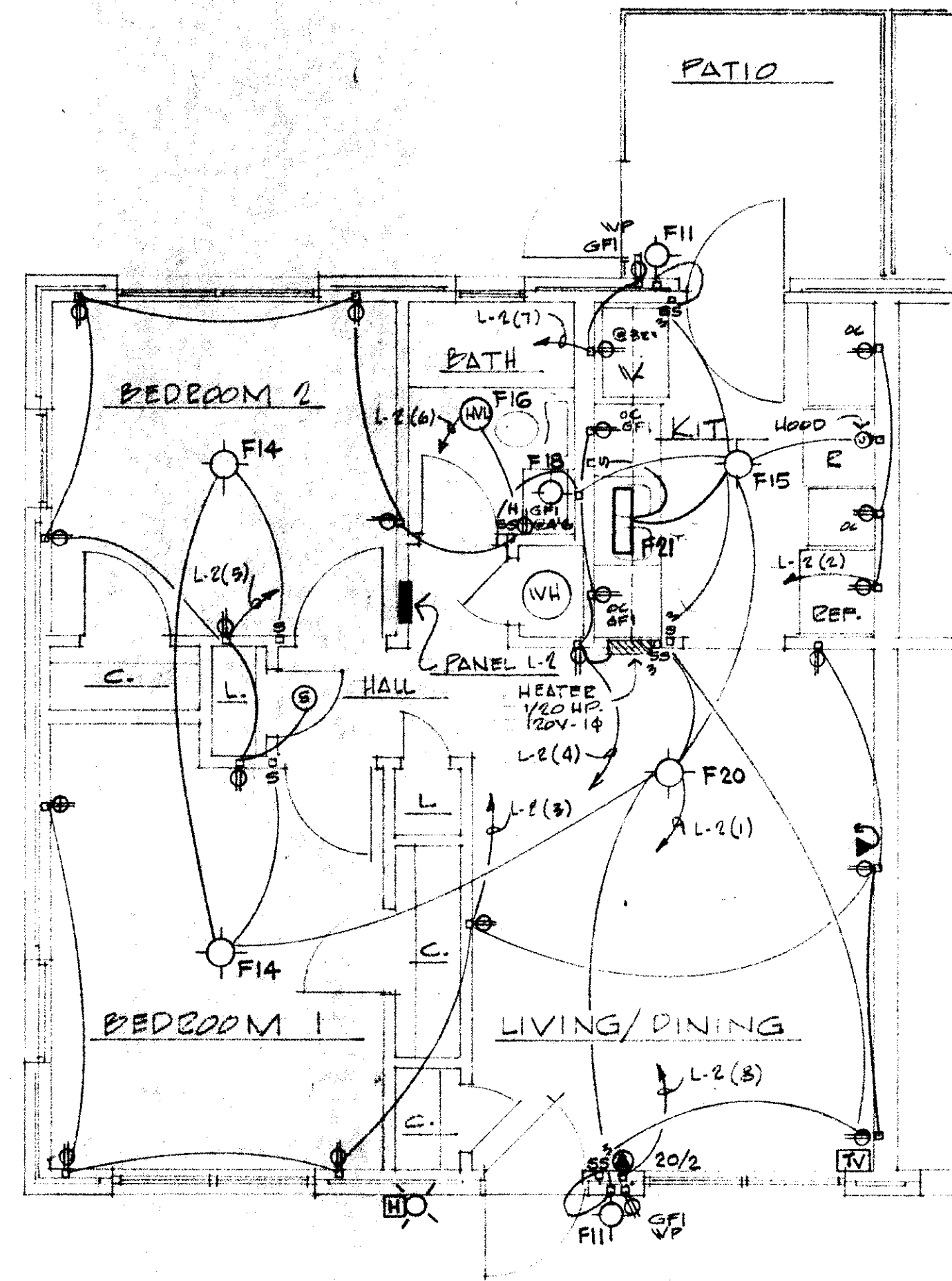


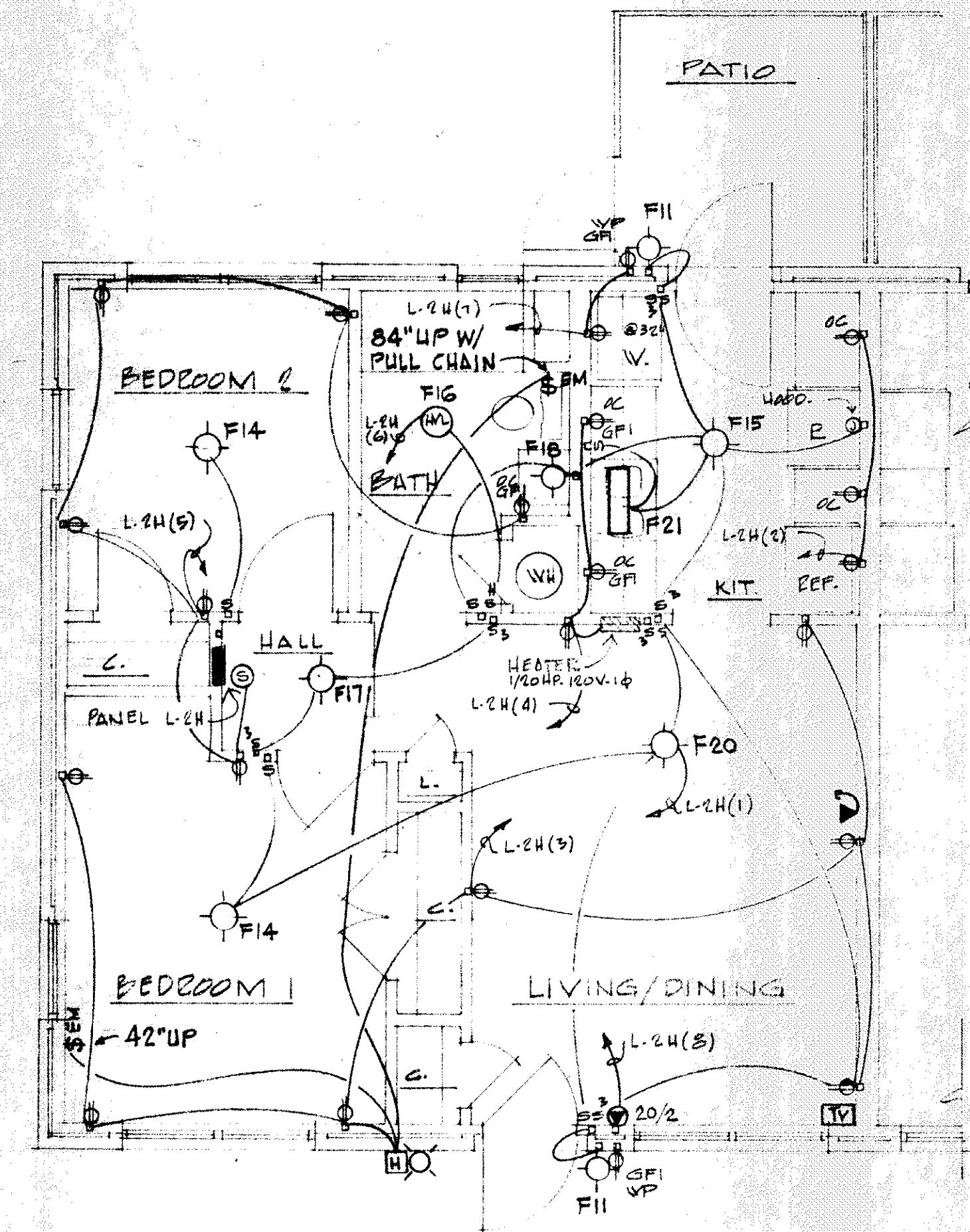
ONE BEDROOM PLAN

1/4"



TWO BEDROOM PLAN

1/4"



TWO BEDROOM PLAN - HANDICAPPED UNIT

1/4"

PANEL 'L-1' SCHEDULE										
SERVICE		120/240V. 1φ-3W-5/N-60Hz AC.								
MAINS		100 AMP MLO W/GEN. BUS.								
BRANCHES		20								
CABINET		FLUSH MOUNTED								
TYPE		S&D-8012L100F/PK96TA								
CKT. No.	No. POLE	TRIP AMP.	BRKR. FRM.	WIRES		RACE	LOAD SERVED	LOAD		
				No.	SIZE	GRND. WAY		KW		
1	1	20	80	2	12	12 NM	LIGHTING	1.0		
2	1	20		2	12	12 NM	KITCHEN RECEPTS.	1.5		
3	1	20		2	12	12 NM	RECEPTS.	.6		
4	1	20		2	12	12 NM	KITCHEN RECEPTS.	1.5		
5	1	20		2	12	12 NM	RECEPTS.	.9		
6	1	20		2	12	12 NM	HEAT/VENT/LIGHT	1.6		
7	1	20		2	12	12 NM	WASH MACH RECEPT	1.5		
8	2	20		2	12	12 NM	A.C. RECEPT.	3.0		
9	1	20					SPACE	1.0		
10-11	1						SPACE ONLY	2.4		
TOTAL								15.0		

PANEL 'L-2' SCHEDULE										
SERVICE		120/240V. 1φ-3W-5/N-60Hz AC.								
MAINS		100 AMP MLO W/GEN. BUS.								
BRANCHES		20								
CABINET		FLUSH MOUNTED								
TYPE		S&D-8012L100F/PK96TA								
CKT. No.	No. POLE	TRIP AMP.	BRKR. FRM.	WIRES		RACE	LOAD SERVED	LOAD		
				No.	SIZE	GRND. WAY		KW		
1	1	20	80	2	12	12 NM	LIGHTING	1.0		
2	1	20		2	12	12 NM	KITCHEN RECEPTS.	1.5		
3	1	20		2	12	12 NM	RECEPTS.	.6		
4	1	20		2	12	12 NM	KITCHEN RECEPTS.	1.5		
5	1	20		2	12	12 NM	RECEPTS.	.9		
6	1	20		2	12	12 NM	HEAT/VENT/LIGHT	1.6		
7	1	20		2	12	12 NM	WASH MACH. RECEPT	1.5		
8	2	20		2	12	12 NM	A.C. RECEPT	3.0		
9	1	20					SPACE	1.0		
10-11	1						SPACE ONLY	2.4		
TOTAL								15.0		

NOTE:
PANEL L-2H SAME FOR HANDICAPPED UNIT.

EMERGENCY CALL SYSTEM

1. INSTALL EMERGENCY CALL SYSTEM AT HANDICAP UNITS.
2. INSTALL COMBINATION HORN/STROBE LIGHT, 120 VOLTS FARADAY CAT. # 5502 OR APPROVED EQUAL. DELETE WORD "FIRE" FROM LENS FOR STROBE LIGHT. HORN/STROBE LIGHT TO BE INSTALLED ON WALL AT LOCATION SHOWN.
3. INSTALL (120 VOLT) TOGGLE SWITCHES AT LOCATIONS SHOWN IN PARALLEL SO EITHER SWITCH WILL ENERGIZE THE HORN/STROBE LIGHT. PROVIDE RED PLATE ON EACH SWITCH W/"EMERGENCY" ENGRAVED IN BLACK.
4. PICK UP 120 VOLT SUPPLY FROM NEAREST RECEPTACLE AND CONNECT BOTH LINE SIDES TOGETHER AND BOTH LOAD SIDES TOGETHER FOR PARALLEL OPERATION OF SWITCHES AND CONNECT LINE SIDE TO UNIT.

ELECTRICAL NOTES: (EXISTING UNITS)

1. ALL EXISTING WIRING WHICH INCLUDES PANELS, RECEPTACLES, SWITCHES AND LIGHTING FIXTURES ARE TO BE REMOVED.
2. NEW ELECTRICAL WIRING IS TO BE FISHED THRU WALLS AND INSTALLED ABOVE CEILING. SOME AREAS MAY REQUIRE CUTTING AND PATCHING THE GYPSUM BOARD FOR INSTALLATION OF WIRING.
3. NEW ELECTRICAL WIRING INCLUDING SERVICE ENTRANCE CABLE SHALL BE COPPER WITH GROUND CONDUCTOR AS NOTED.

FAUNTLEROY & LATHAM ARCHITECTS

316 NORTH LEE LANE
COVINGTON, LA 70433

SAM FAUNTLEROY AIA
KENNETH LATHAM AIA

REGISTERED PROFESSIONAL ENGINEER
JESSE G. DYKES
REG. NO. 4592
ELECTRICAL ENGINEER IN LOUISIANA

FOR THE HOUSING AUTHORITY OF THE CITY OF SLIDELL
MODERNIZATION WORK FOR THE HOUSING AUTHORITY OF THE CITY OF SLIDELL
SLIDELL, LOUISIANA
SITE LA-103-3

CONTRACTOR SHALL BE RESPONSIBLE FOR VERIFYING ALL EXISTING CONDITIONS AND DIMENSIONS BEFORE COMMENCING WORK AND SHALL REPORT ANY DISCREPANCIES TO ARCHITECT.

Dwn. H.C.
Date: 8-22-59
Sh.