

DAMMON ENGINEERING, INC.

CHIEF ENGINEER
EMMETT DAMMON, P.E.

CHIEF ARCHITECT
ROBERT WILTSE

1095 FLORIDA AVENUE
SLIDELL, LA. 70458
OFFICE: 985-649-5832
FAX: 985-641-5950

WEBSITE:
WWW.DAMMONENGINEERING.COM

EMAIL:
DAMMONENG@BELLSOUTH.NET

ARCHITECTURE
ENGINEERING
STUDIES
PLANNING
INVESTIGATION
EXPERT WITNESS

NEW FACILITY

STANDARD MATERIALS
1601 NORTH LANE
MANDEVILLE, LA

CONTROL ROOM FLOOR PLAN,
SECTION & ELEVATIONS

REV:

SCALE: AS NOTED

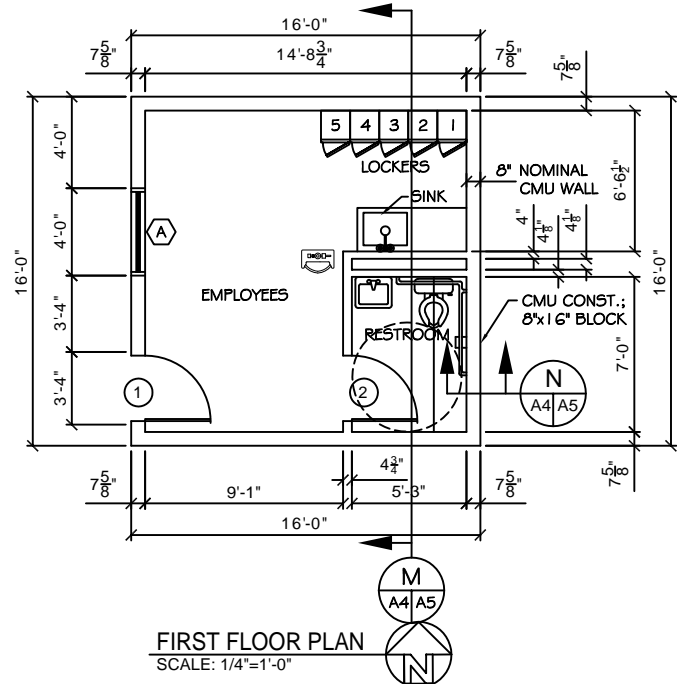
JOB#: 1906

DATE: 8-18-08

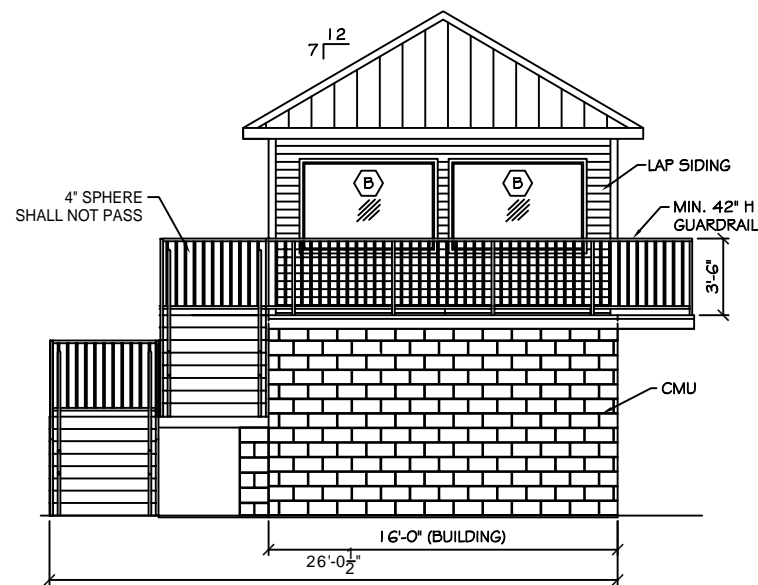
SHEET

A-4

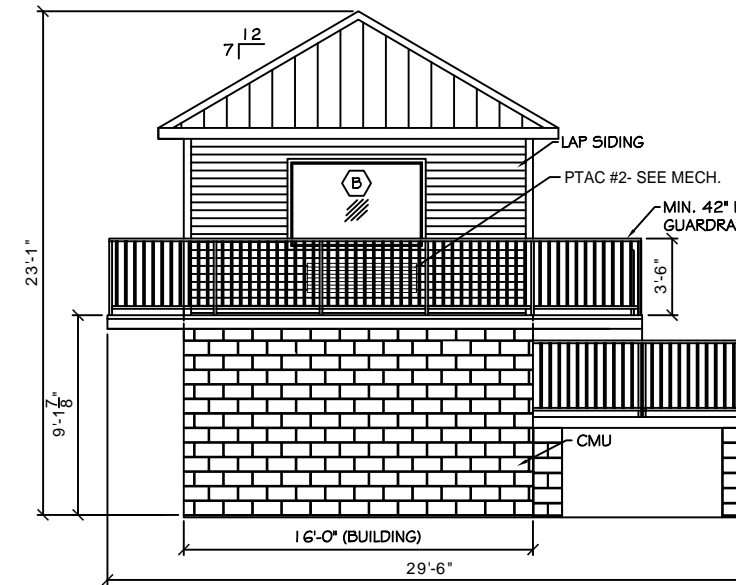
OF



FIRST FLOOR PLAN
SCALE: 1/4"=1'-0"

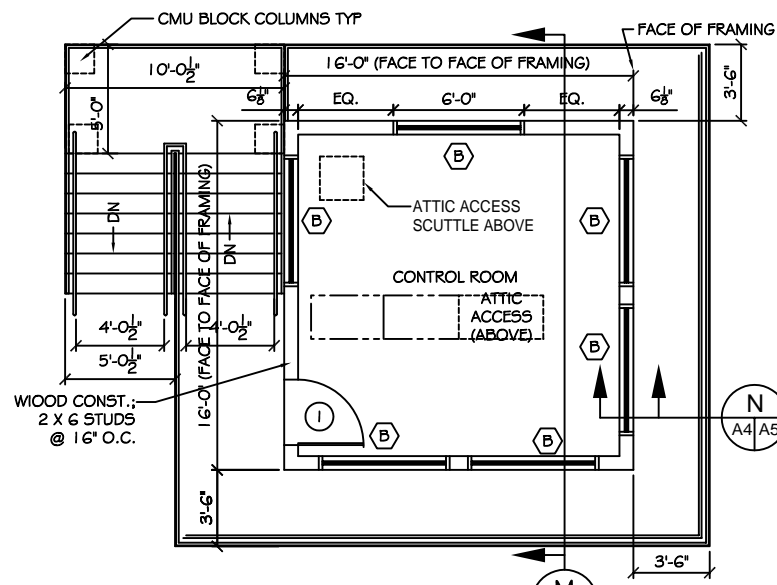


FRONT ELEVATION
SCALE: 1/4"=1'-0"

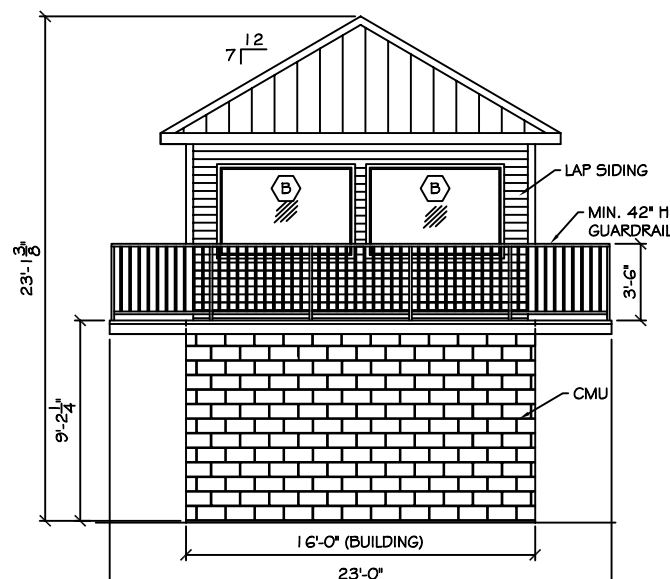


REAR ELEVATION
SCALE: 1/4"=1'-0"

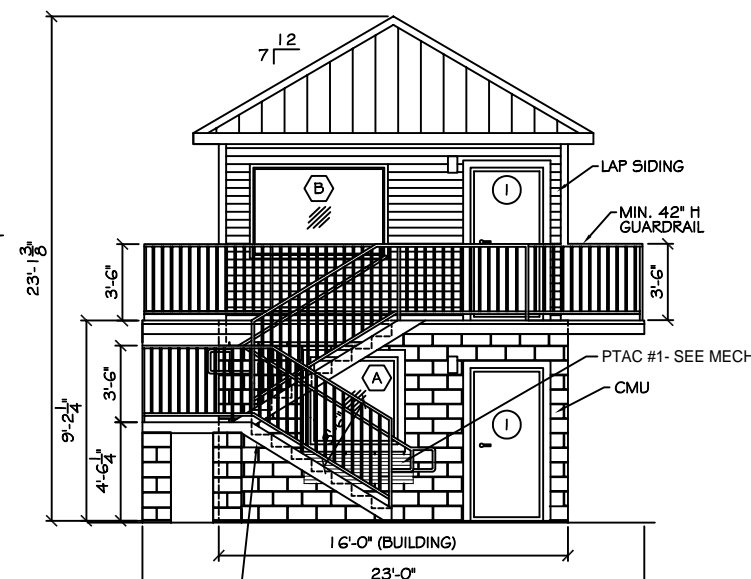
- PROVIDE MOISTURE RESISTANT TYPE GYP. BD. IN ALL DAMP AREAS INCLUDING BATHROOM.
- INTERIOR WALLS AND CEILING FINISHES SHALL BE CLASS C: FLAME SPREAD 0-200;
SMOKE-DEVELOPED 0-450.



SECOND FLOOR PLAN
SCALE: 1/4"=1'-0"



RIGHT SIDE ELEVATION
SCALE: 1/4"=1'-0"



LEFT SIDE ELEVATION
SCALE: 1/4"=1'-0"