

**DAMMON ENGINEERING, INC.**

CHIEF ENGINEER  
EMMETT  
DAMMON, P.E.

CHIEF ARCHITECT  
ROBERT  
WILTSE

1095 FLORIDA AVENUE  
SLIDELL, LA. 70458  
OFFICE: 985-649-5832  
FAX: 985-641-5950

WEBSITE:  
WWW.DAMMONENGINEERING.COM

EMAIL:  
DAMMONENG@BELLSOUTH.NET

ARCHITECTURE  
ENGINEERING  
STUDIES  
PLANNING  
INVESTIGATION  
EXPERT WITNESS

NEW  
FACILITY

STANDARD  
MATERIALS  
1601 NORTH LANE  
MANDEVILLE, LA

CONTROL ROOM  
FRAMING PLANS,  
SECTION &  
DETAILS

REV:

SCALE: AS NOTED

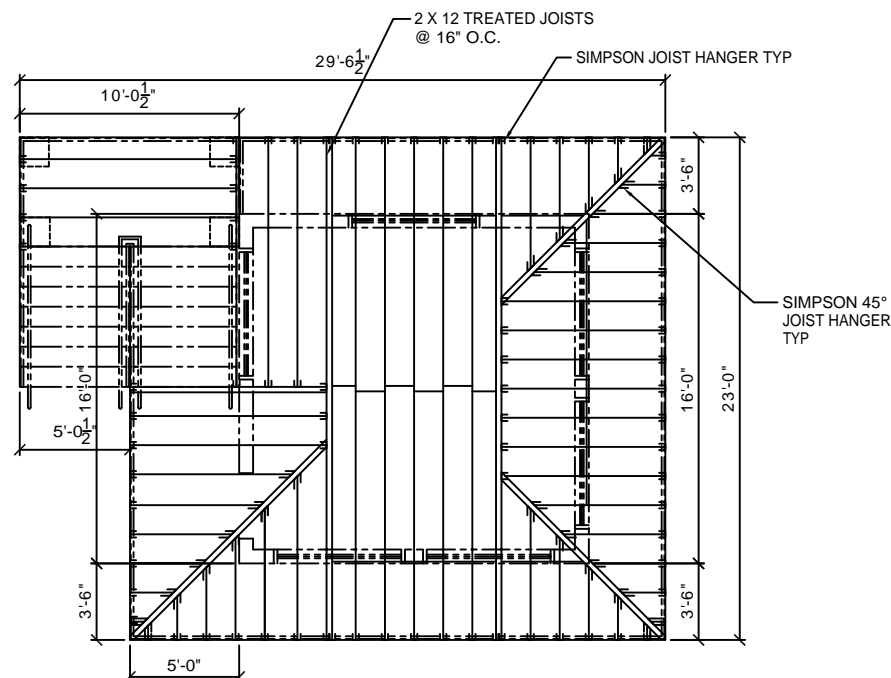
JOB#: 1906

DATE: 01-09-09

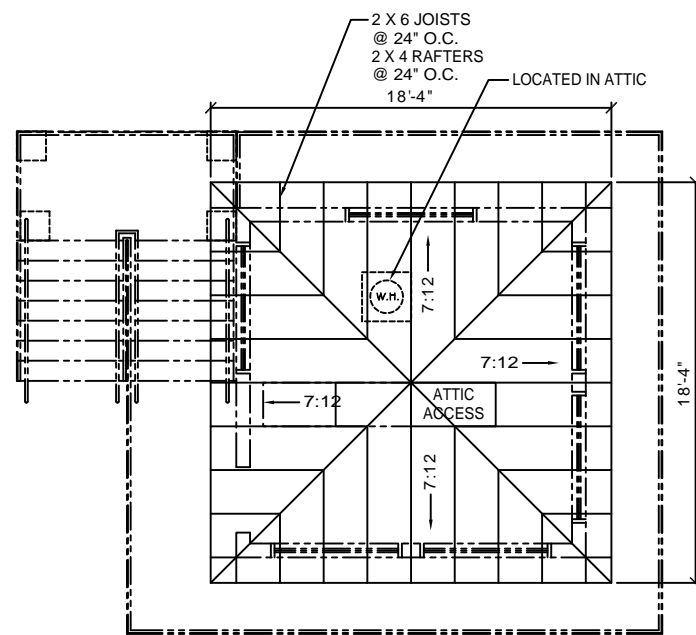
SHEET

**A-5**

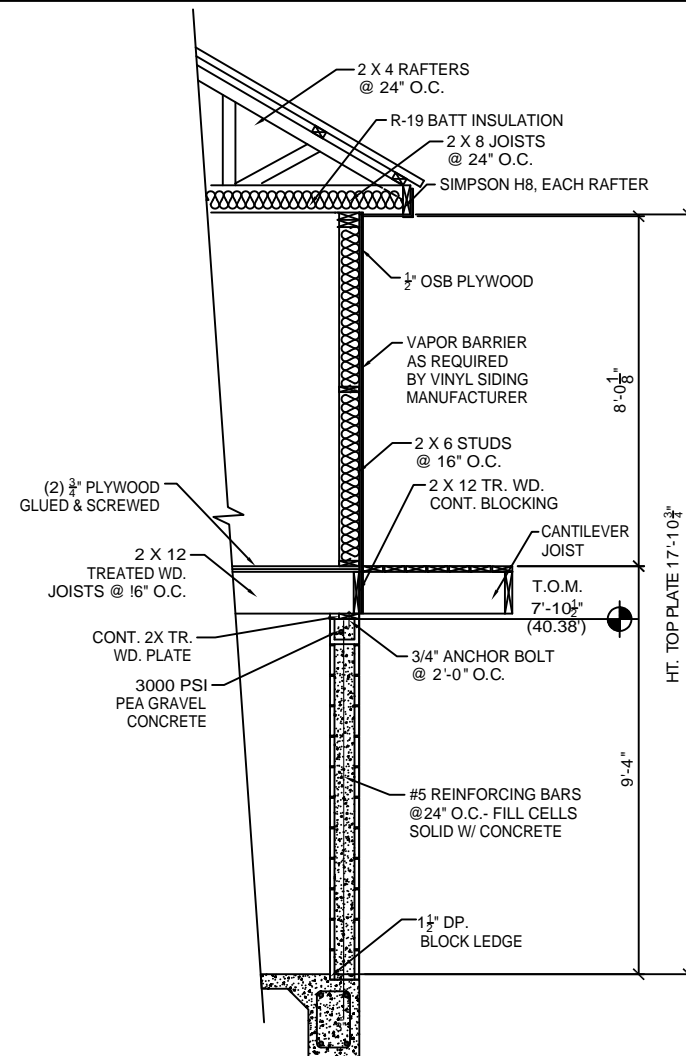
OF



**SECOND FLOOR FRAMING PLAN**  
SCALE: 1/4"=1'-0"



**ROOF FRAMING PLAN**  
SCALE: 1/4"=1'-0"



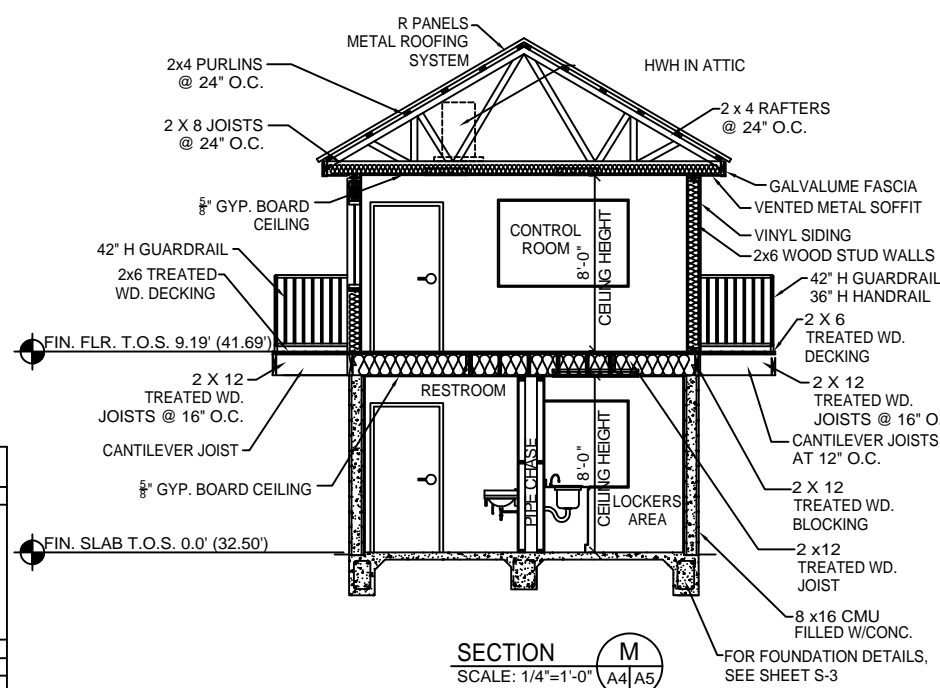
**SECTION A4/A5**  
SCALE: 1/2"=1'-0"

FINISH SCHEDULE					
NAME	FLOOR	BASE	WALLS	CEILING	REMARKS
EMPLOYEE AREA		CARPET	CONCRETE	2" X 2" LAY-IN PANELS	
BATHROOM		VCT	NONE	GYPSUM BOARD	
CONTROL ROOM		CERAMIC TILE	RUBBER WALL BASE	EXPOSED METAL BLDG. INSUL.	
OWNER TO SELECT STYLE, COLOR, AND BRAND		WOOD BASE	WOOD BASE	CEILING HGT. VARIES	

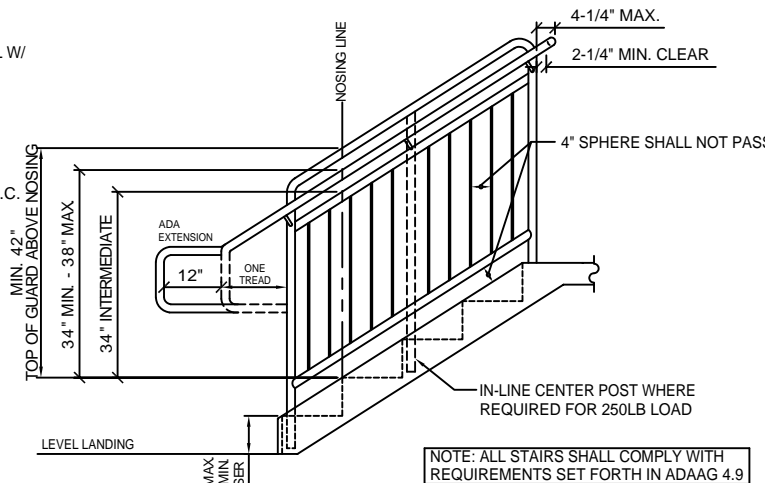
WINDOW SCHEDULE						
WINDOW	TYPE	FRAME	GLASS	LITES	ACCESSORIES	REMARKS
A 4/0x4/0	FIXED	ALUMINUM	WIREGLASS	2/4	ARCHED TOP	
B 6/0x4/0	FIXED	ALUMINUM	WIREGLASS	2/4	ARCHED TOP	

DOOR & HARDWARE SCHEDULE						
DOOR	TYPE	FRAME	HINGE	LOCK	ACCESSORIES	REMARKS
1 3/0x6/8	HOLLOW METAL OVERHEAD STOREFRONT	ALUMINUM	WOOD	DBL SWING	BLU GLR PRF	RATED FOR 130 MPH WIND
2 3/0x6/8	ALUMINUM	WOOD	DBL SWING	BLU GLR PRF	BLU GLR PRF	

- DOOR & HARDWARE NOTES:**
- ALL GLAZING TO BE LAMINATED SAFETY GLASS.
  - DOOR HINGES TO BE STANLEY FULL MORTISE STANDARD WEIGHT, BALL BEARING HINGES, STAINLESS STEEL WITH DARK BRONZE FINISH @ EXTERIOR & MATCHING DARK BRONZE FINISH ON STANDARD STEEL @ INTERIOR.
  - PROVIDE LEVER HANDLE ADA APPROVED LOCKSETS WITH MATCHING DARK BRONZE FINISH, TO BE SELECTED BY OWNER.
  - COORDINATE KEYING SCHEDULE WITH OWNER.
  - DOOR STOPS TO BE EQUAL TO IVES No. 436 OR 437, AS REQUIRED IN MATCHING DARK BRONZE FINISH.
  - WEATHER-STRIP & THRESHOLD FINISH TO COMPLEMENT OTHER HARDWARE.
  - ALL EXTERIOR DOORS RATED FOR 130 MPH.



**SECTION M**  
SCALE: 1/4"=1'-0"



**TYPICAL HANDRAIL / GUARDRAIL DETAIL**  
SCALE: N.T.S.

GUARDRAIL: MIN. 42" ABOVE NOSING LINE  
250 LB LOAD - INTERMEDIATES TO 34" ABOVE NOSING LINE  
HANDRAIL: 1-1/4" MIN. - 2" MAX. O.D. (MIN. 4" MAX. 6-1/4" CIRCUMFERENCE)  
POST: 1-1/2" O.D. x 3/4" WALL TUBE

NOTE: ALL STAIRS SHALL COMPLY WITH REQUIREMENTS SET FORTH IN ADAAG 4.9