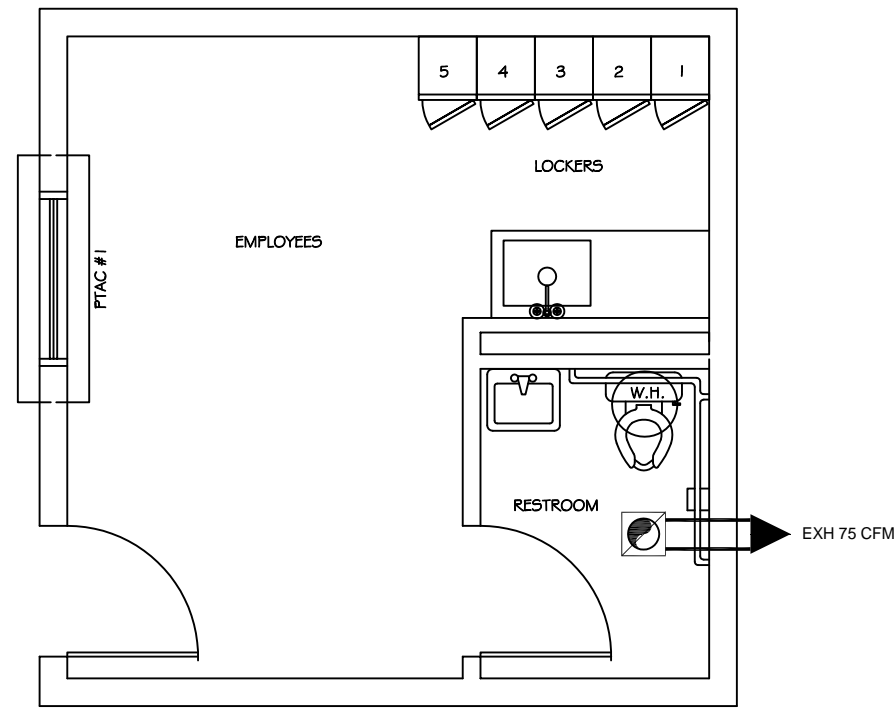
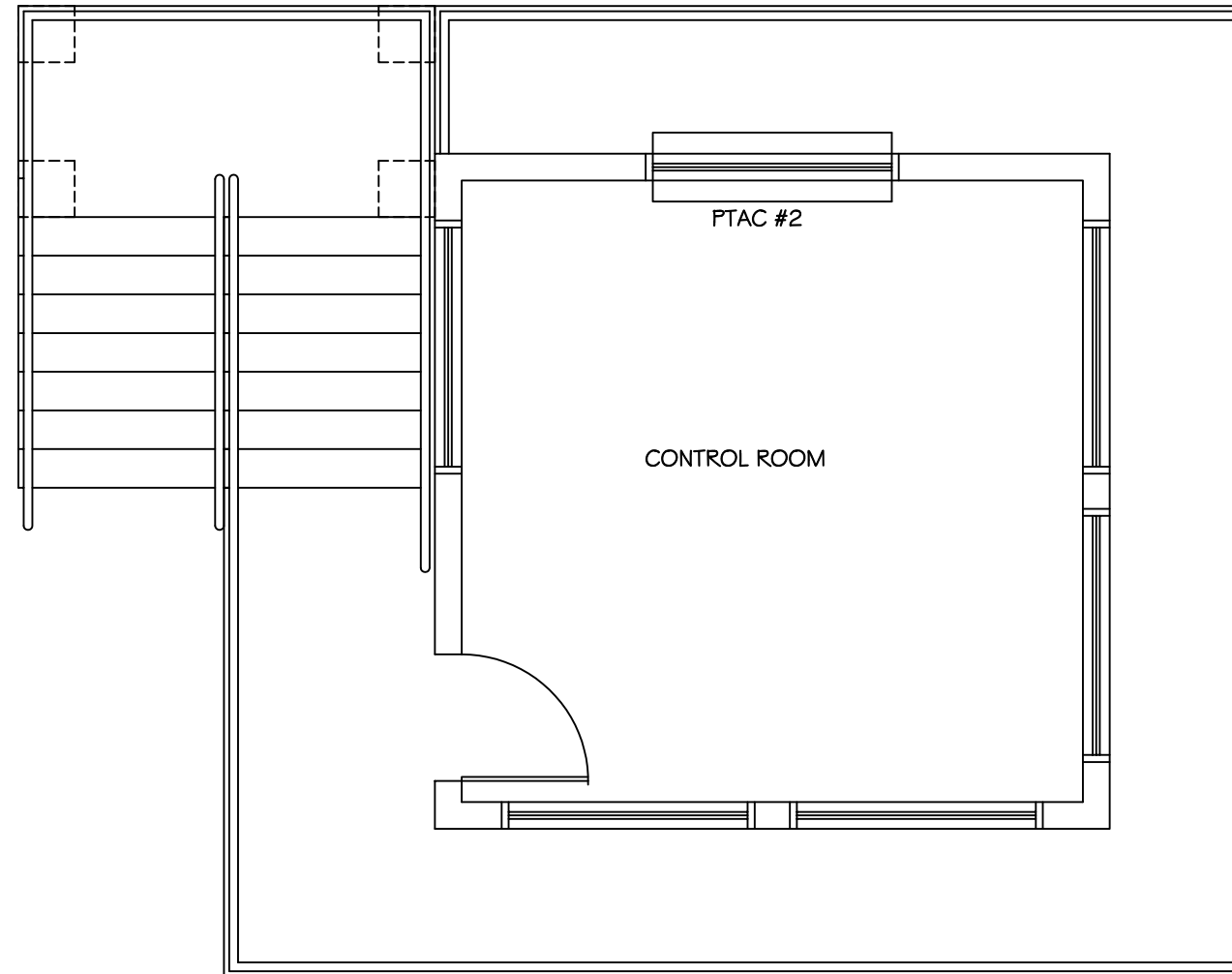


EXHAUST FAN SCHEDULE				
LOC	CFM	VOLTAGE	TYPE	MFR.
TOILETS	75	120	VENT/LIGHT	-

A/C SPLIT UNIT SCHEDULE							
SUITE	TOTAL BTU	CFM	O.A.	HEAT (KW)	ELECTRICAL		COMMENTS
					VOLTAGE	MCA/CKT BRKR	
LOCKER RM.	12,000 1 TON	400	50	5	208V, 3Ø	-	SEE SCH. CARRIER PTAC
CONTROL RM.	12,000 1 TON	400	50	5	208V, 3Ø	-	SEE SCH. CARRIER PTAC



FIRST FLOOR MECHANICAL PLAN
SCALE: 1/2"=1'-0"



SECOND FLOOR MECHANICAL PLAN
SCALE: 1/2"=1'-0"

MECHANICAL NOTES:

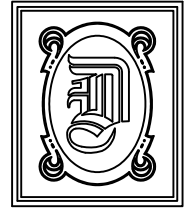
- CONCEALED DUCTWORK TO BE UL-181, CLASS 1 FIBERGLASS DUCTBOARD. DUCTS SHALL BE SIZED TO LIMIT MAIN DUCTS TO 1000 FPM AND SECONDARY DUCTS TO 600 FPM. TO BE INSTALLED PER SMACNA STANDARDS.
- EXPOSED DUCTWORK TO BE GALVANIZED SHEET METAL PER SMACNA STANDARDS. LINE WITH NEOPRENE COATED 1.0", 1.5 POUNDS PER CUBIC FOOT DUCT INSULATION.
- ROUND FLEXIBLE DUCT TO BE UN-181, CLASS 1, AIR DUCT MATERIALS.
- DUCT SIZES SHOWN ARE CLEAR INSIDE DIMENSIONS.
- IN ALL SYSTEMS OVER 2000 CFM AND LESS THAN 15000 CFM, SMOKE DETECTORS SHALL BE INSTALLED IN ACCORDANCE WITH NFPA 72E IN THE RETURN AIR DUCT DOWNSTREAM OF THE AIR HANDLING UNIT, AND ALL FILTERS TO AUTOMATICALLY STOP THE FAN.
- PROVIDE U.L. LISTED 125°F FIRESTAT IN RETURN AIR OF EACH SYSTEM UNDER 2000 CFM TO SHUT DOWN THE FAN IN THE EVENT OF A FIRE.
- PROVIDE U.L. RATED FIRE DAMPERS WHERE REQUIRED AT ALL DUCT PENETRATIONS OF FIRE-RATED ASSEMBLIES AND WHERE REQUIRED BY CODE, INCLUDING OUTSIDE AIR INTAKES.
- CONDENSATE DRAINS TO BE PVC PIPE RUN TO PLUMBERS P-TRAP WITHIN FIVE FEET OF AIR HANDLING UNITS.
- ALL AIR HANDLING SYSTEMS TO BE BALANCED TO ASSURE PROPER AIR FLOWS PER PLANS.
- ALL THERMOSTATS TO BE AUTOMATIC CHANGEOVER WITH HEAT SWITCH.
- EXHAUST FAN TO BE BROAN MODEL NO. 100 CF OR EQUAL. FAN SHALL BE CONTROLLED BY A SWITCH ON THE WALL IN THE SAME LOCATION AS LIGHT SWITCH(ES). PROVIDE BACK DRAFT DAMPER.
- PROVIDE AND INSTALL WATERPROOF GRILLE VENT IN PROPER ROOF LOCATION FOR PLUMBING FIXTURE EXHAUST.
- ALL SUPPLY AIR VENTS SHALL BE EQUIPPED WITH AIR CONTROL DAMPERS.
- LOCATE OUTDOOR UNITS AS SHOWN ON ARCHITECTURAL DRAWINGS.
- REFRIGERANT LINES SHALL BE SIZED BY UNIT MANUFACTURER AND INSTALLED ACCORDING TO MANUFACTURER'S INSTRUCTIONS.
- FRESH AIR SHALL BE SUPPLIED TO EACH AIR HANDLER THROUGH EXTERIOR WALL. DUCT SHALL BE SUPPLIED WITH A CONTROL DAMPER.
- INSTALL FIRE DAMPER WHERE S.A. AND R.A. DUCTS PENETRATE 1 HOUR RATED CEILINGS.
- ALL ELECTRICAL, MECHANICAL AND PLUMBING PENETRATING FIRE WALLS SHALL BE FIRE CAULKED. (PENETRATIONS THROUGH RATED CONSTRUCTION SHALL BE SEALED WITH A MATERIAL CAPABLE OF PREVENTING THE PASSAGE OF FLAMES AND HOT GASES WHEN TESTED IN ACCORDANCE WITH ASTM-E8-14.
- DRAWN DIAGRAMMATICALLY.

GENERAL NOTES

- REFER TO STRUCTURAL DRAWINGS TO COORDINATE LOCATION(S) & MOUNTING OF MECHANICAL EQUIPMENT.
- FLEXIBLE DUCTWORK LENGTH NOT TO EXCEED 5'-0".
- REFER TO REFLECTED CEILING PLAN FOR FINAL GRILLE AND DIFFUSER LOCATION(S) AND COORDINATE AS REQUIRED.
- FINAL LOCATION OF TEMPERATURE CONTROLS TO BE COORDINATED WITH OWNER AT JOB SITE.
- PROVIDE AND INSTALL SMOKE DETECTORS, AS APPROVED BY LOCAL AHJS, IN RETURN AIR AND SUPPLY AIR DUCT OF AIR HANDLING UNITS (AHU-1, 2 & 3). PLACE NEAR R/A AND S/A OPENING OF AHU AND PROVIDE WITH ACCESS PANEL. WIRING BY ELECTRICAL CONTRACTOR.

NOTE:

FRESH AIR INTAKES ARE REQUIRED TO HAVE MOTORIZED OR GRAVITY DAMPERS TO SHUT OFF WHEN SYSTEM IS NOT RUNNING. ALL THERMOSTATS MUST BE PROGRAMMABLE. SEE SECTIONS 502.4.4 OR 503.2.4.3 2006 INTERNATIONAL ENERGY CODE.



DAMMON ENGINEERING, INC.

CHIEF ENGINEER
EMMETT DAMMON, P.E.

CHIEF ARCHITECT
ROBERT WILTSE

1095 FLORIDA AVENUE
SUDELL, LA. 70458
OFFICE: 985-649-5832
FAX: 985-641-5950

WEBSITE:
WWW.DAMMONENGINEERING.COM

EMAIL:
DAMMONENG@BELLSOUTH.NET

ARCHITECTURE

ENGINEERING

STUDIES

PLANNING

INVESTIGATION

EXPERT WITNESS

NEW FACILITY

STANDARD MATERIALS
1601 NORTH LANE
MANDEVILLE, LA

CONTROL ROOM MECHANICAL PLAN

REV:

SCALE: AS NOTED

JOB#: 1906

DATE: 01-09-09

SHEET

M-2

OF