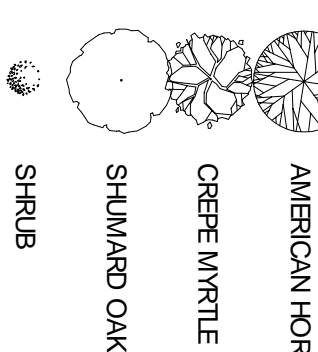


LANDSCAPING REQUIREMENTS



SHRUB

PERIMETER PLANTING AREA: A PERIMETER PLANTING AREAS AT LEAST TEN (10) FEET IN WIDTH MUST BE PROVIDED OFF THE PUBLIC RIGHT-OF-WAY AND PARKING AREAS OR STRUCTURES. PLANTING MATERIALS SHOULD ACHIEVE A BALANCE BETWEEN LOW MAINTENANCE HORIZONTAL SHRUBBERY AND VERTICAL TREES. TREES SHALL BE PLACED NO MORE THAN 20-25 FEET ON CENTER WITH A COMBINATION OF NO LESS THAN 10 SHRUBS PER TREE.

PARKING LOT PLANTING: PARKING LOT INTERIORS SHOULD BE DESIGNED TO PROVIDE AT LEAST ONE (1) TREE FOR EVERY TWELVE (12) PARKING SPACES. EACH TREE SHOULD BE LOCATED IN A LANDSCAPED ISLAND OF AT LEAST 200 SQUARE FEET. TREES MUST BE DISTRIBUTED UNIFORMLY SO AS TO PROVIDE A CANOPY EFFECT.

PEDESTRIAN ACCESS PLANTING: LANDSCAPED AREAS MUST BE PROVIDED BETWEEN THE BUILDING FACES HAVING ACCESS AND THE PARKING LOT. FOUR (4) SQUARE FEET OF LANDSCAPED AREA SHOULD BE PROVIDED FOR EVERY LINEAR FOOT OF BUILDING FACE. NO PLANTING AREA SHOULD BE LESS THAN FIVE (5) FEET WIDE AND PLANTING MATERIALS SHOULD ACHIEVE A BALANCE OF LOW MAINTENANCE SHRUBBERY AND VERTICAL TREES.

PARKING REQUIREMENTS:

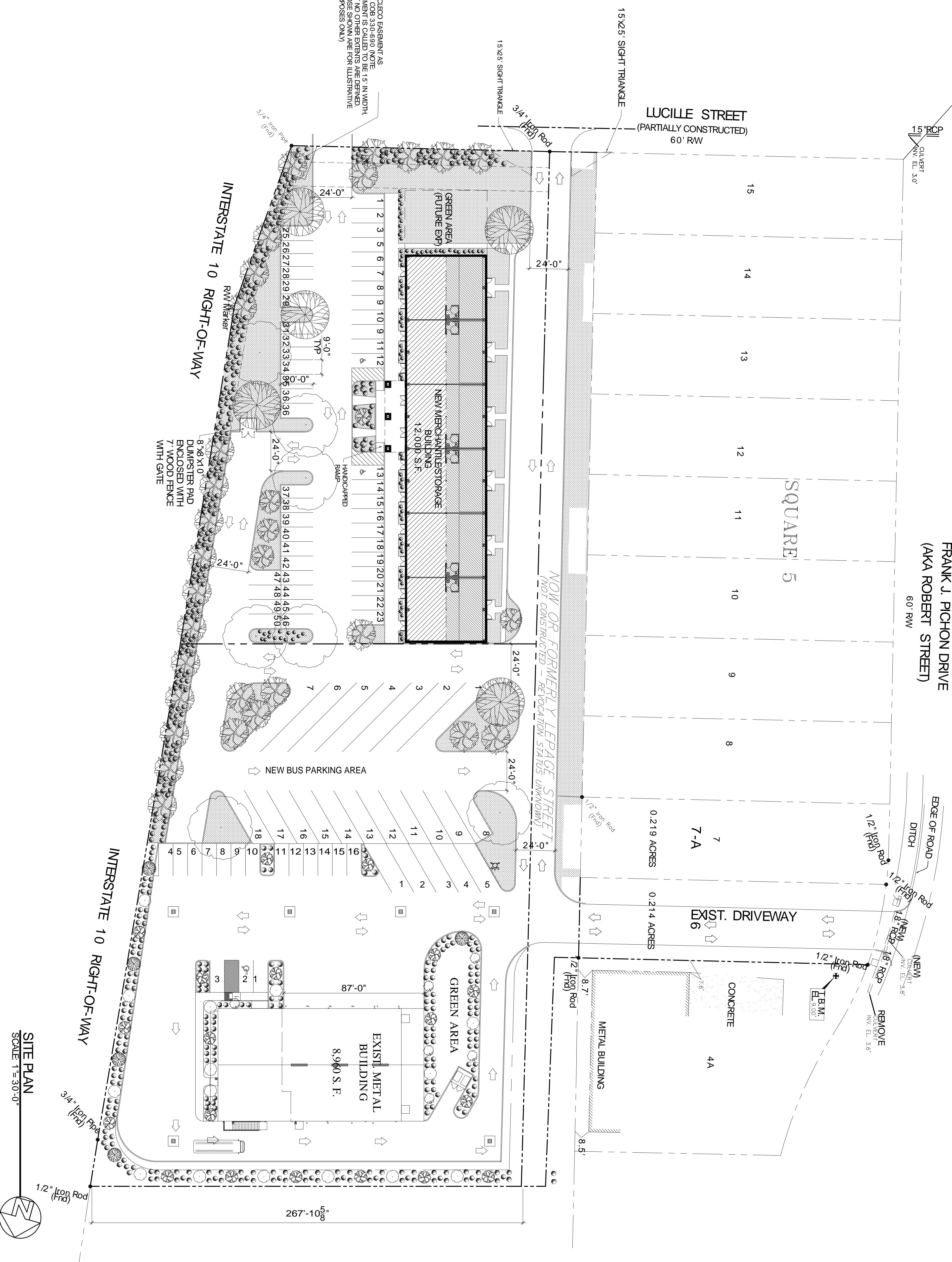
REQUIRED PARKING SPACES: PROVIDE 1 SPACE FOR EACH 300 S.F.

MERCANTILE OCCUPANCY: PROVIDE 1 SPACE FOR EACH 300 S.F.

12,000 S.F. BUILDING AREA / 300 S.F. = 40 SPACES

ACCESSIBLE PARKING SPACES: 2 HC SPACES

26 - 50 SPACES



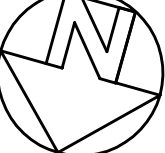
15' CIRC. ESSENTIAL AS PER COB 330-690. NOTE: ESSENTIALS CALLED TO BE 15' IN WIDTH BUT NO OTHER EXTENTS ARE DEFINED. THOSE SHOWN ARE FOR ILLUSTRATIVE PURPOSES ONLY.

8'x8'x11'0" DUMPSTER PAD ENCLOSED WITH 7' WOOD FENCE WITH GATE

INTERSTATE 10 RIGHT-OF-WAY

INTERSTATE 10 RIGHT-OF-WAY

SITE PLAN SCALE 1"=30'-0"



EUGENE HOTARD LUCILLE ST.

SLIDELL, LA

JOB No:

DATE: 11-30-2012

DRAWN BY: KJK

CHECKED BY: KJK

The above drawings and specifications, designs and arrangements represented hereby are and shall remain the property of Dammon Engineering, and no part thereof shall be copied, distributed to others, or used in connection with any work or project other than the specific project for which the base has been prepared and developed without written consent of Dammon Engineering. Visual contact with these drawings or specifications shall constitute conclusive evidence of acceptance of these restrictions.



DAMMON
ENGINEERING, INC.
Architects & Engineers

CHIEF ENGINEER: EMMETT DAMMON, P.E.
CHIEF ARCHITECT: KEVIN KINCHEN
554 OLD SPANISH TRAIL
SLIDELL, LA 70458

dammonengineering.com
dammoning@bellsouth.net
PHONE: 985-649-5832
FAX: 985-641-5950

REVISIONS

#	DESCRIPTION	DATE

SITE PLAN

SHEET No: 01 OF 1

C-2