

JEFFERSON SPRINKLER, INC.

P.O. BOX 129 Gretna, LA 70054 Phone: 504- 393-7699 Fax: 504-367-0216

Fax Cover Sheet

Date: June 3, 2010

TO: Estimator

FIRM: Contractor

FROM: Jack A. Kennedy, Jr.

**RE: Isolated wet pipe sprinkler protection for the Honaker Funeral Home –
Crematory in Slidell, La.**

Number of pages including cover sheet: 1

We will provide labor and material to design and install an all automatic wet pipe sprinkler system at the above-mentioned project for **the sum of \$6,319.00.**

All material and installation will be in accordance with NFPA 13.

This system will include an inside control valves, shot gun trim, flow switches, monitor switches, all necessary piping (sized by hydraulic calculations), and automatic sprinkler heads. Also included are all design, necessary permits, inspections, insurance, and taxes required to perform this work.

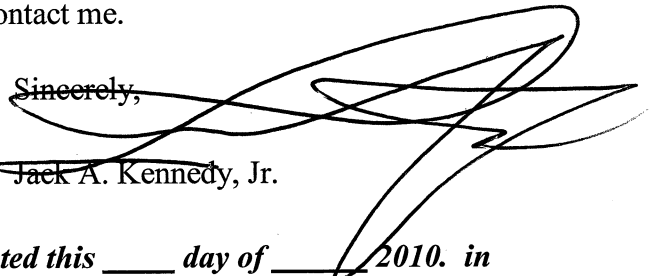
Plans and calculations must be submitted to the **Authorities Having Jurisdiction** and approved before any work can begin.

Our quote does not include any electrical work, alarm work, back flow preventor, fire caulking, painting of pipe, fire pump, or underground piping - water supply/freestanding FDC, or freestanding fire department connection.

This quote must be signed and returned to our office upon approval of price. This quote must be added as an attachment to any subcontract between Jefferson Sprinkler Inc. and the general contractor. The architectural State Fire Marshal review letter must also be returned with this quote to ensure timely submittal to the State Fire Marshal.

Our quote is based on the city water mains providing an adequate water supply.

If you have any question please do not hesitate to contact me.

Sincerely,

Jack A. Kennedy, Jr.

ACCEPTANCE: *The above proposal is hereby accepted this ____ day of ____ 2010. in the amount of \$ _____ due upon receipt of the invoice.*

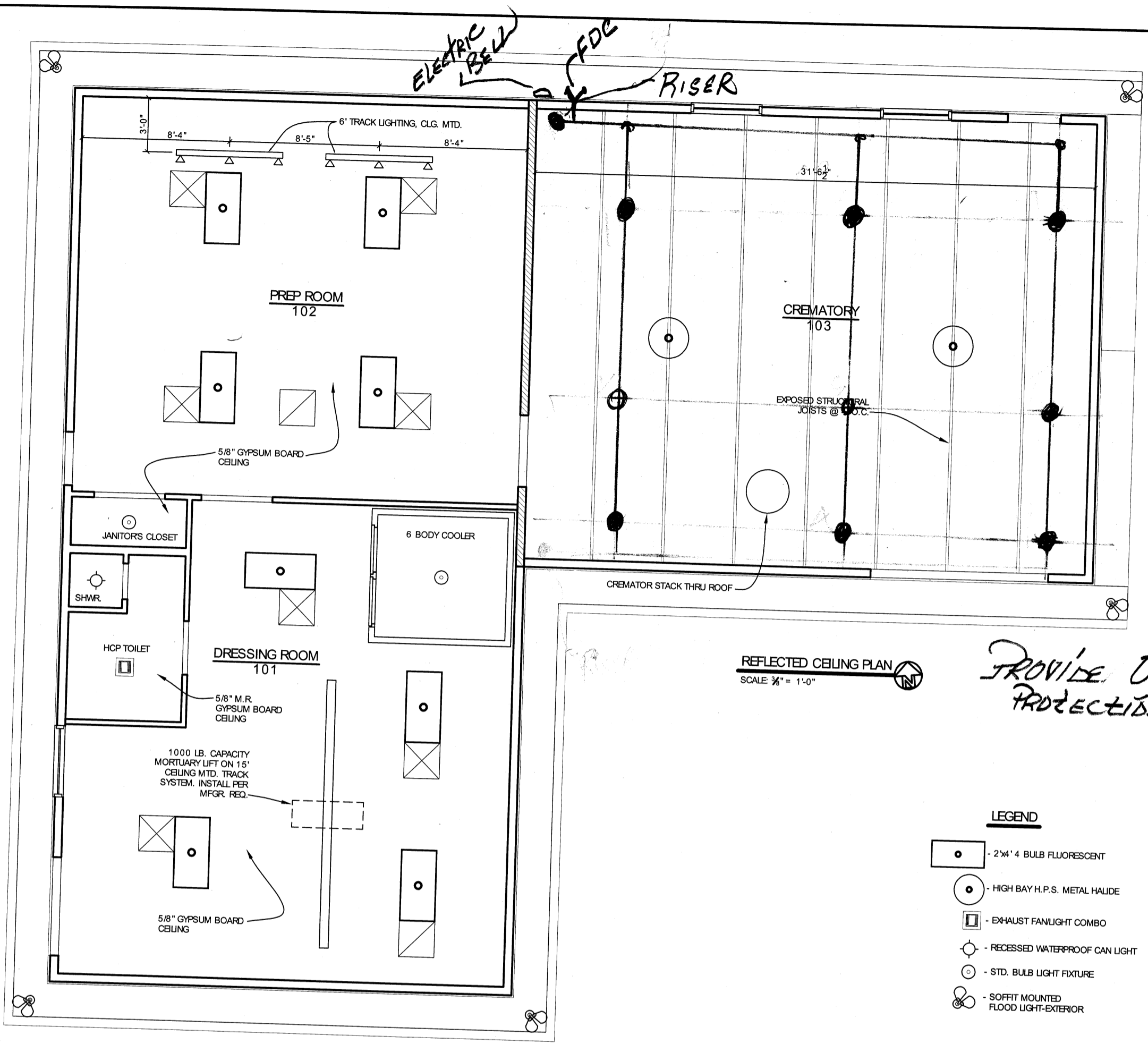
BY: _____

Company Name: _____

Billing Address: _____

Phone No: _____

Fax No.: _____



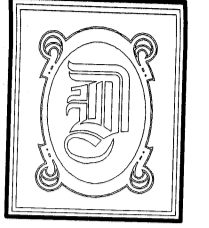
ELECTRIC BELL
FDC
RISER

9 SER

PROVIDE ORDINARY PROTECTION PER NFPA.

REFLECTED CEILING PLAN
 SCALE 3/8" = 1'-0"

- LEGEND**
- - 2'x4' BULB FLUORESCENT
 - - HIGH BAY H.P.S. METAL HALIDE
 - - EXHAUST FANLIGHT COMBO
 - - RECESSED WATERPROOF CAN LIGHT
 - - STD. BULB LIGHT FIXTURE
 - ⊗ - SOFFIT MOUNTED FLOOD LIGHT-EXTERIOR



DAMMON ENGINEERING, INC.
 CHIEF ENGINEER
 EMMETT DAMMON, P.E.
 CHIEF ARCHITECT
 ROBERT WILTSE
 1095 FLORIDA AVENUE
 SUDELL, LA. 70458
 OFFICE: 985-649-5832
 FAX: 985-641-5950
 WEBSITE:
 WWW.DAMMONENGINEERING.COM
 EMAIL:
 DAMMONENG@BELL SOUTH.NET
 ARCHITECTURE
 ENGINEERING
 STUDIES
 PLANNING
 INVESTIGATION
 EXPERT WITNESS

NEW CREMATORY AND EMBALMING FACILITY

HONAKER FUNERAL HOME
 TERRY TRANCHINA
 1751 W. GAUSE BLVD
 SUDELL, LA

REFLECTED CEILING PLAN

REV:

SCALE AS NOTED

JOB#: 1999

DATE: 6-9-09

SHEET 10

A-4

OF 19