

DAMMON
ENGINEERING, INC.

CHIEF ENGINEER
EMMETT
DAMMON, P.E.
CHIEF ARCHITECT
ROBERT
WILTSE

1095 FLORIDA AVENUE
SLIDELL, LA, 70458
OFFICE: 985-649-5832
FAX: 985-641-15950

WEBSITE:
WWW.DAMMONENGINEERING.COM
EMAIL:
DAMMONENG@BELLSouth.NET

ARCHITECTURE
ENGINEERING
STUDIES
PLANNING
INVESTIGATION
EXPERT WITNESS

NEW
CREMATORY
AND EMBALMING
FACILITY

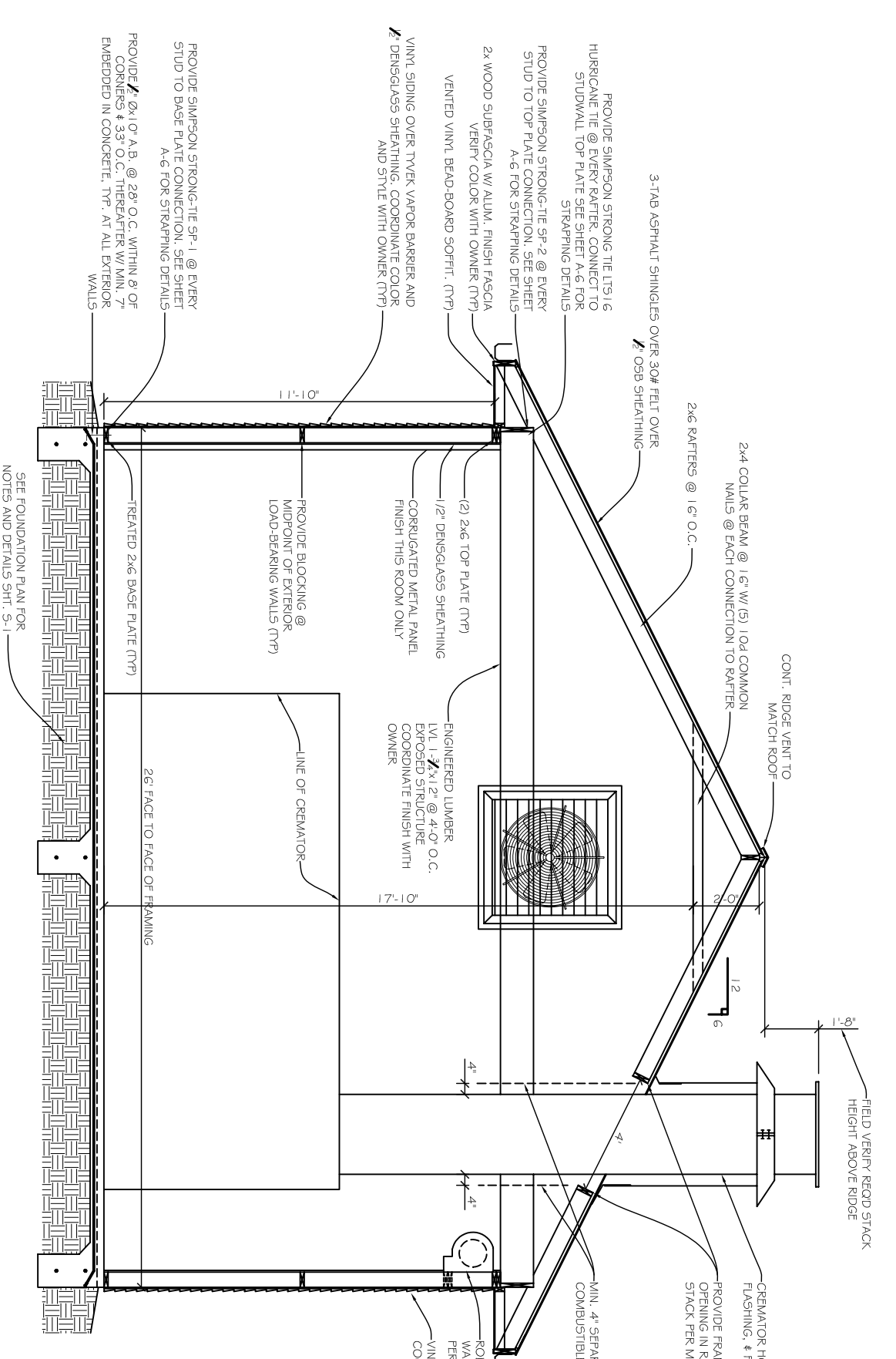
HONAKER FUNERAL
HOME
TERRY TRANCHINA
1751 W. GAUSE BLVD
SLIDELL, LA

CROSS
SECTION

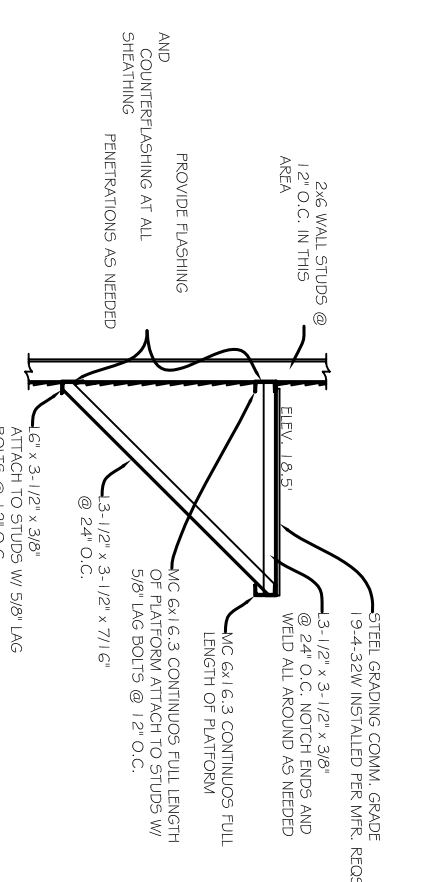
REV:	
SCALE: AS NOTED	
JOB#: 1999	
DATE: XX-XX-08	
SHEET 10	

A-3

OF 20



CROSS SECTION
SCALE: 1/2" = 1'-0"



AC PLATFORM DETAIL
SCALE: 1/2" = 1'-0"