

DAMMON
ENGINEERING, INC.

CHIEF ENGINEER
EMMETT
DAMMON, P.E.
CHIEF ARCHITECT
ROBERT
WILTSE

1095 FLORIDA AVENUE
SLIDELL, LA, 70458
OFFICE: 985-649-5632
FAX: 985-641-5950

WEBSITE:
WWW.DAMMONENGINEERING.COM
EMAIL:
DAMMONENG@BELL.SOUTH.NET

ARCHITECTURE
ENGINEERING
STUDIES
PLANNING
INVESTIGATION
EXPERT WITNESS

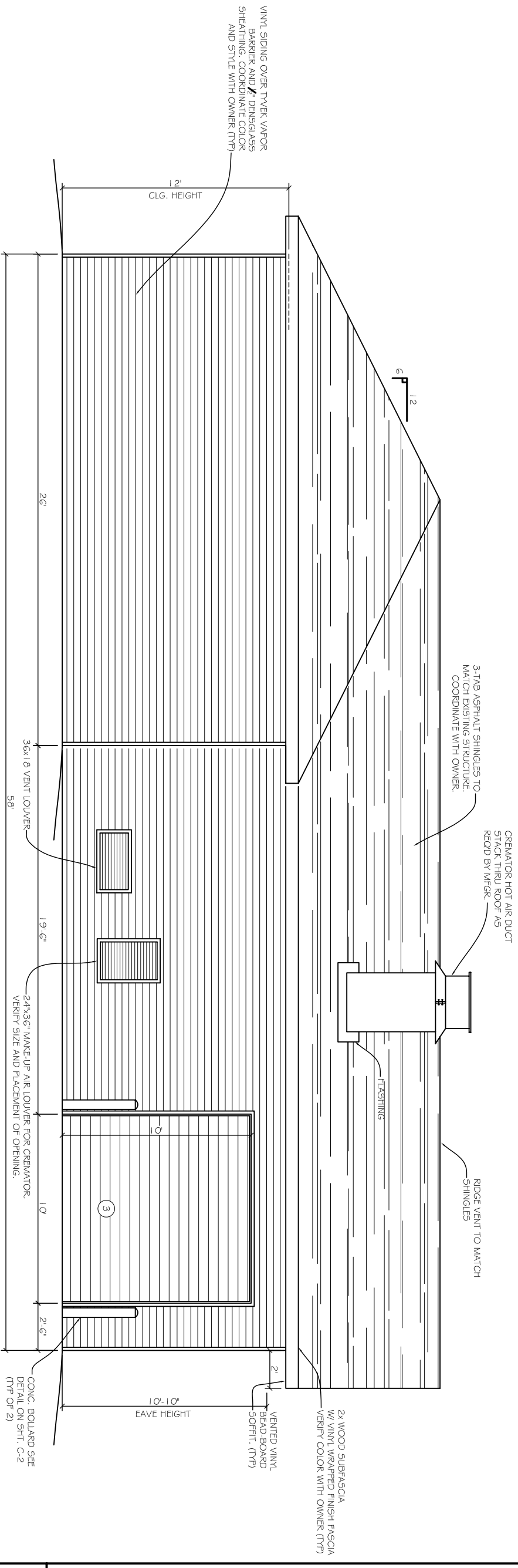
NEW
CREMATORY
AND EMBALMING
FACILITY

HONAKER FUNERAL
HOME
TERRY TRANCHINA
1751 W. GAUSE BLVD.
SLIDELL, LA

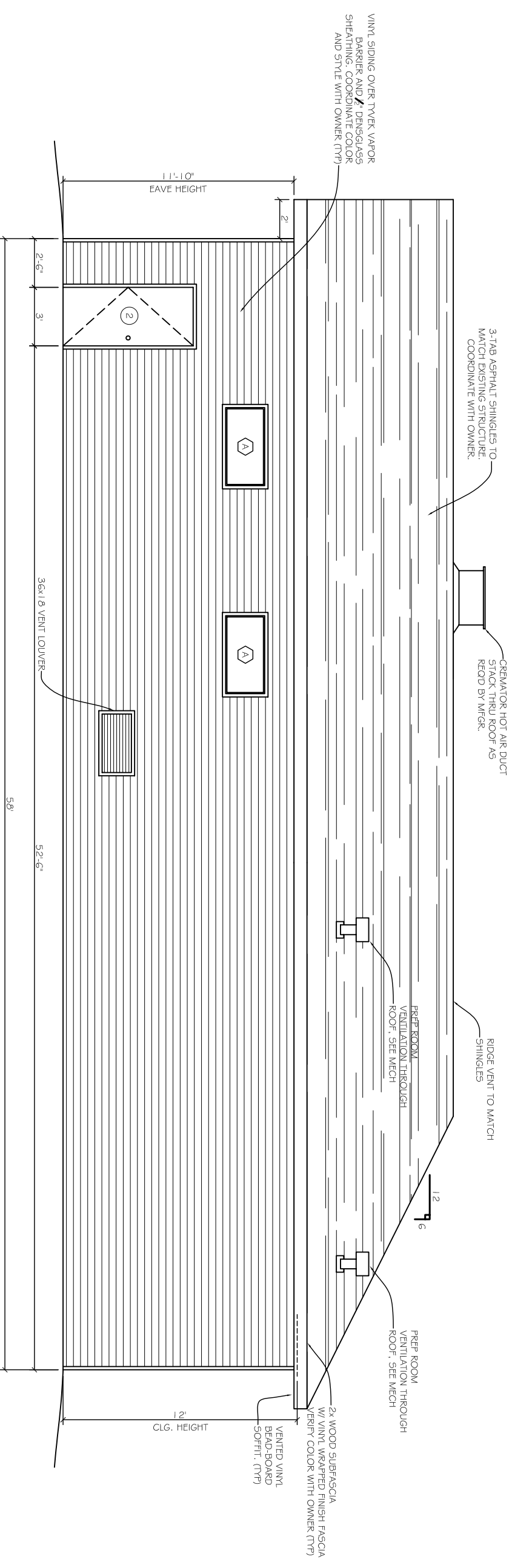
EXTERIOR
ELEVATIONS

REV:
SCALE: AS NOTED
JOB#: 1999
DATE: 5-26-09
SHEET

OF
A-5



SOUTH ELEVATION
SCALE: 1/8" = 1'-0"



NORTH ELEVATION
SCALE: 1/8" = 1'-0"