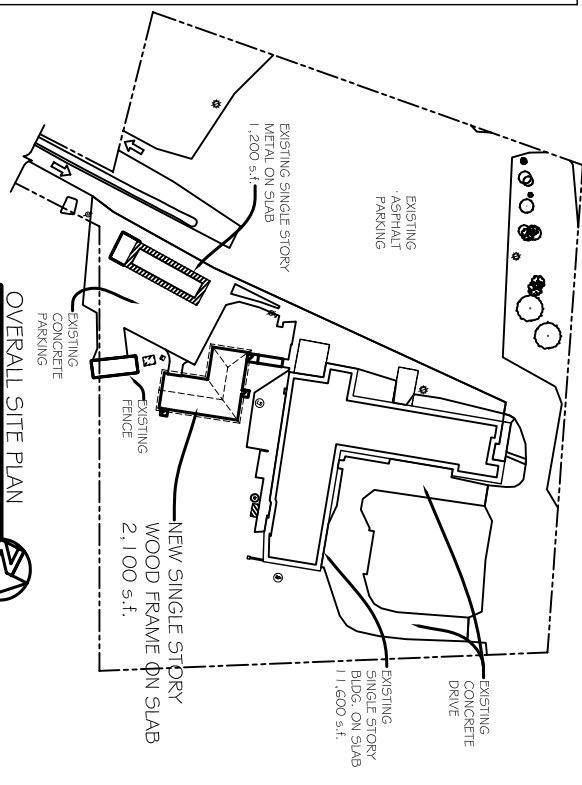


PARTIAL SITE PLAN
SCALE: 1" = 10'-0"



OVERALL SITE PLAN
N.T.S.

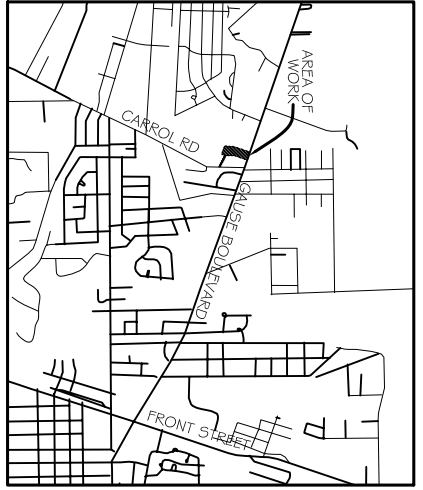
- LEGEND**
- - - PROPERTY LINE
 - - - NEW BLDG. FOOTPRINT
 - - - NEW FENCE
 - - - NEW DRAINAGE CATCH BASIN
 - ➔ TRAFFIC FLOW DIRECTION
 - ▭ EXISTING CONCRETE
 - ▭ EXISTING ASPHALT PARKING

PARKING REQUIREMENTS
EXISTING ASPHALT PARKING SHALL SERVE NEW CREMATORY BUILDING

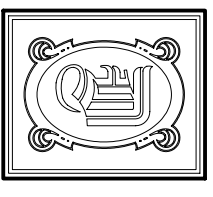
SITE LIGHTING
EXTERIOR LIGHTING SHALL BE SHADED OR INWARDLY DIRECTED IN SUCH A MANNER SO THAT NO DIRECT LIGHTING OR GLARE BE CAST BEYOND THE PROPERTY LINE. THE INTENSITY OF SUCH LIGHTING SHALL NOT EXCEED ONE FOOT CANDLE AS MEASURED AT THE ABUTTING PROPERTY LINE. (NVA)

SITE PLAN NOTES

1. ROOFING MATERIAL: 3-TAB ASPHALT SHINGLES
2. SIDING MATERIAL: VINYL SIDING
3. UTILITIES: ALL NEW UTILITIES SHALL BE PLACED UNDERGROUND.



VICINITY MAP
N.T.S.



DAMMON ENGINEERING, INC.
 CHIEF ENGINEER
 EMMETT DAMMON, P.E.
 CHIEF ARCHITECT
 ROBERT WILTSE
 1095 FLORIDA AVENUE
 SLIDELL, LA. 70458
 OFFICE: 985-649-5832
 FAX: 985-641-5950
 WEBSITE: WWW.DAMMONENGINEERING.COM
 EMAIL: DAMMONENG@BELLOUTH.NET

ARCHITECTURE
 ENGINEERING
 STUDIES
 PLANNING
 INVESTIGATION
 EXPERT WITNESSES

NEW CREMATION AND EMBALMING FACILITY

HONAKER FUNERAL HOME
 TERRY TRANCHINA
 1751 W. GAUSE BLVD
 SLIDELL, LA

SITE PLAN

REV:	
SCALE:	AS NOTED
JOB#:	1999
DATE:	6-9-09
SHEET:	2

C-1