

DAMMON ENGINEERING, INC.

CHIEF ENGINEER
EMMETT DAMMON, P.E.

CHIEF ARCHITECT
ROBERT WILTSE

1095 FLORIDA AVENUE
SLIDELL, LA. 70458
OFFICE: 985-649-5832
FAX: 985-641-5950

WEBSITE:
WWW.DAMMONENGINEERING.COM

EMAIL:
DAMMONENG@BELLSOUTH.NET

ARCHITECTURE
ENGINEERING
STUDIES
PLANNING
INVESTIGATION
EXPERT WITNESS

GREEN-STATEFARM
RETAIL COMPLEX
381-391 GAUSE
BLVD., WEST
SLIDELL, LA

SITE
UTILITIES &
ILLUMINATION
PLAN

REV:

SCALE: AS NOTED

JOB#: 2057

DATE: 06-23-10

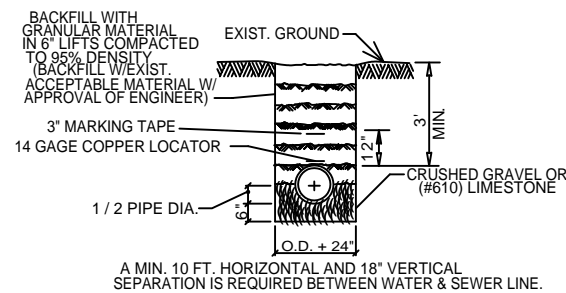
SHEET 3

C-2

OF 19

LEGEND

- - PROPERTY LINE
- - BUILDING SETBACK
- - LANDSCAPING SETBACK MINIMUM AND BUFFER ZONE LIMITS AT REAR
- - NEW BUILDING OUTLINE
- W --- - NEW WATER LINE
- S --- - NEW SEWER LINE
- E --- - NEW POWER LINE
- - SILT FENCING DETAIL
- - NEW DRAIN LINE



PIPE BEDDING DETAIL FOR SEWER & WATER LINE
N.T.S.

ASSUMED ELEVATIONS
T.C. = 18.96
INV. = 11.97

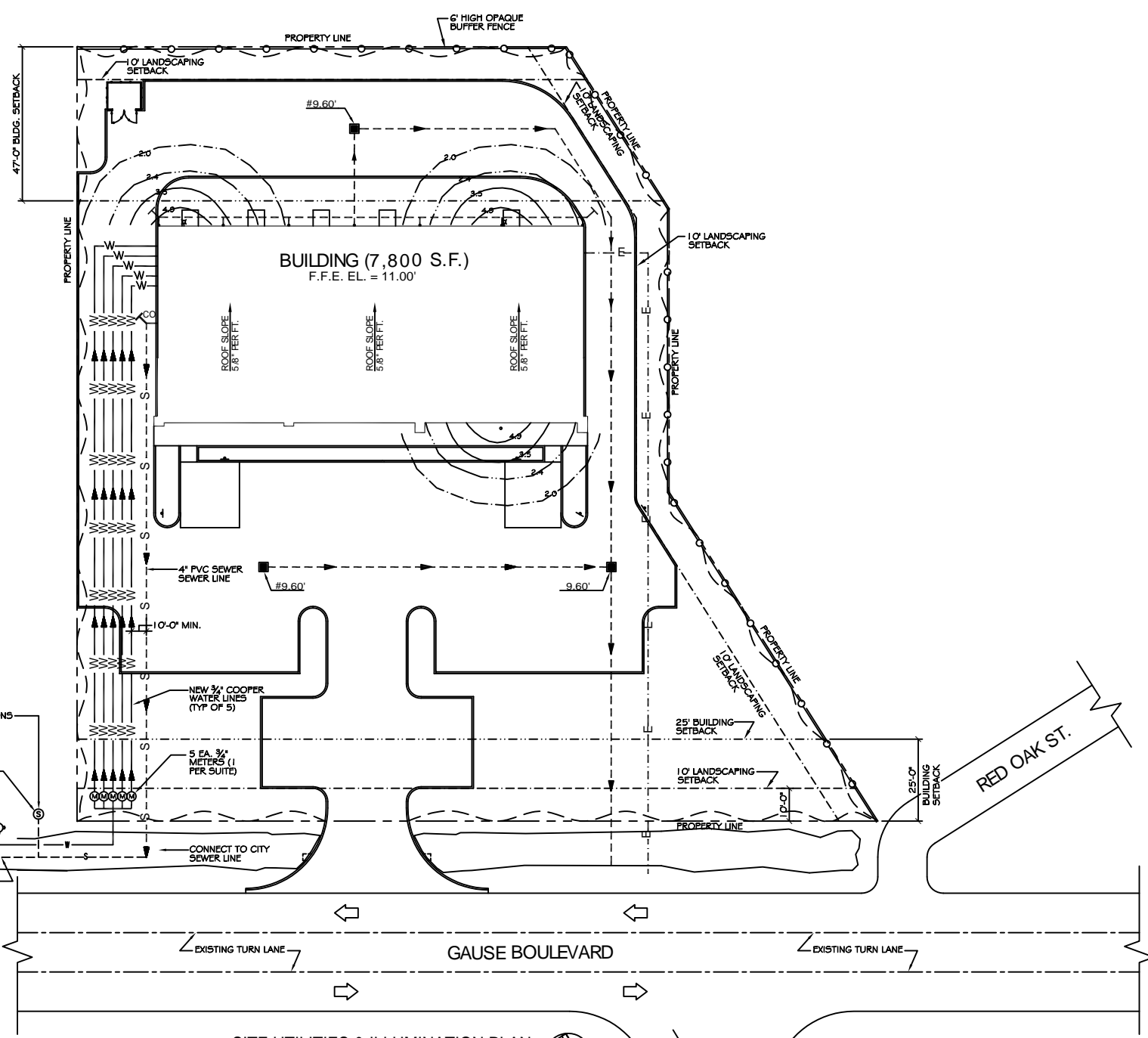
EXISTING SEWER MANHOLE

EXISTING FIRE HYDRANT

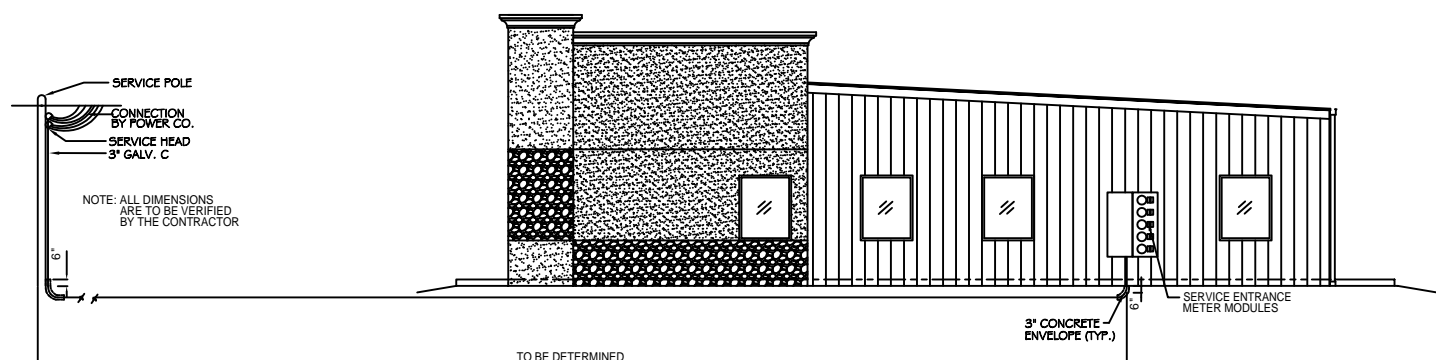
EXISTING WATER LINE

EXISTING SEWER LINE

CONNECT TO CITY SEWER LINE



SITE UTILITIES & ILLUMINATION PLAN
SCALE: 1"=20'



ELECTRICAL SERVICE DETAIL
N.T.S.