

TOP OF MANHOLE
ELEV. 10.9

B.M. Nail in
Power Pole

M.B.G. Nail
(B.M. SET)

EDGE OF ASPHALT

EAST HALL AVENUE

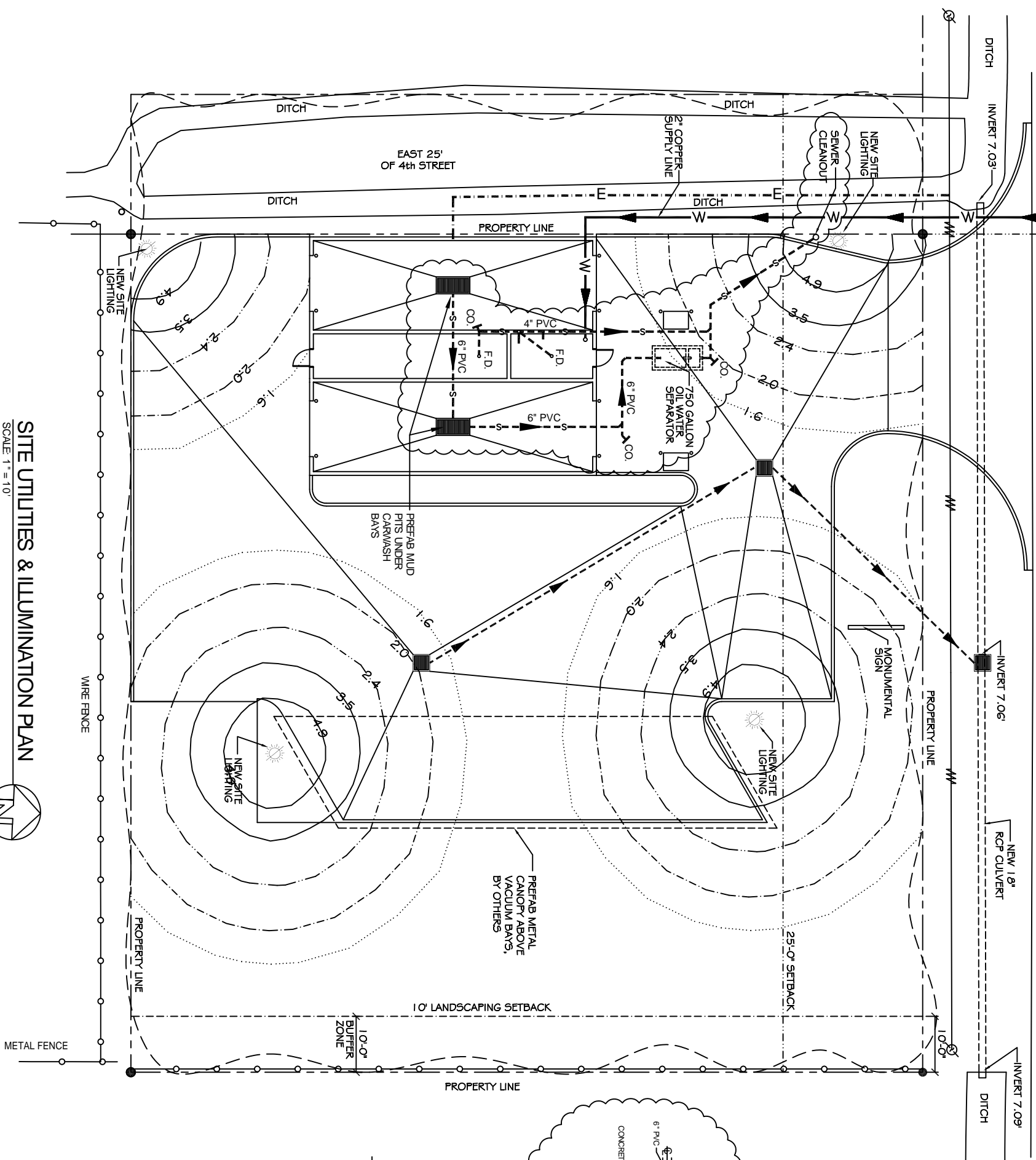
TOP OF MANHOLE
ELEV. 10.2

519.1' (50' R.W.)

329.5'

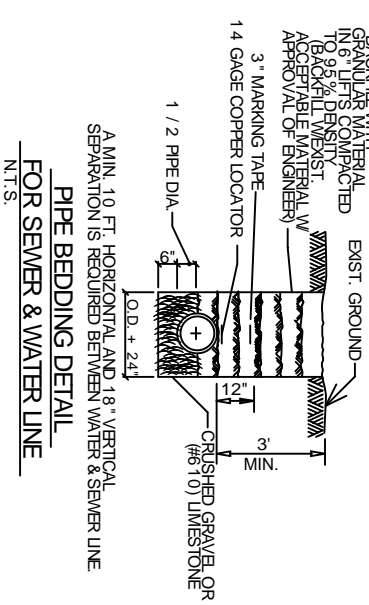
EDGE OF ASPHALT

DITCH INVERT 7.03' NEW 18" RCP CULVERT INVERT 7.06' DITCH INVERT 7.09'

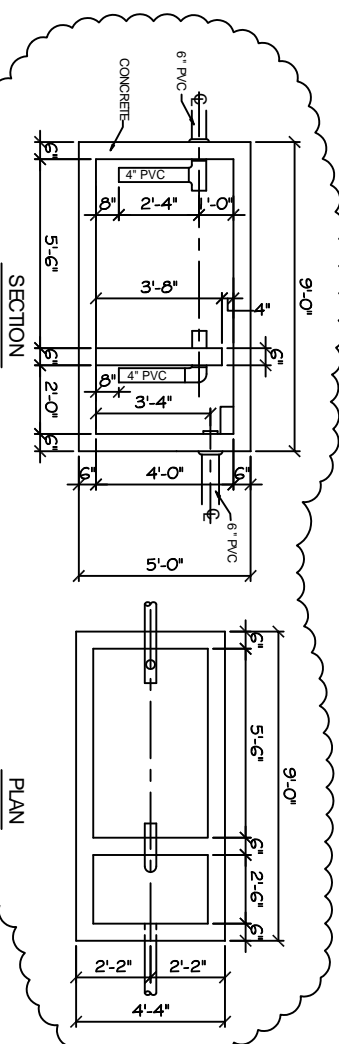


LEGEND

- - - - - PROPERTY LINE
- - - - - BUILDING SETBACK
- - - - - LANDSCAPING SETBACK MINIMUM AND BUFFER ZONE LIMITS AT REAR
- - - - - NEW BUILDING OUTLINE
- W - NEW WATER LINE
- S - NEW SEWER LINE
- E - NEW POWER LINE
- - - - - SILT FENCING DETAIL
- - - - - NEW DRAIN LINE

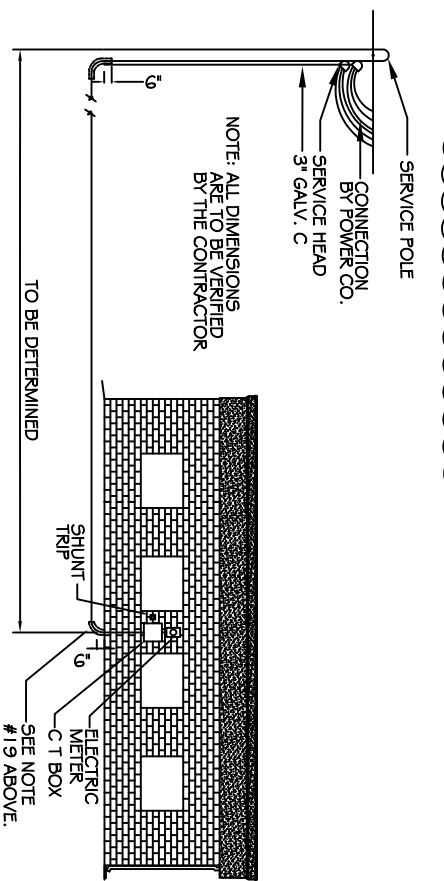


MIN. 10 FT. HORIZONTAL AND 18" VERTICAL SEPARATION IS REQUIRED BETWEEN WATER & SEWER LINE
FOR SEWER & WATER LINE
N.T.S.



OILWATER SEPARATOR
N.T.S.

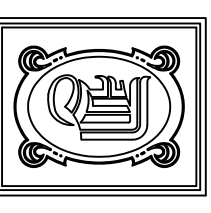
NOTE
THE OILWATER SEPARATOR MUST HAVE A MINIMUM WATER DEPTH OF THREE (3) FEET AND A MINIMUM WATER VOLUME OF 750 GALS. IN ADDITION, THE TOP OF THE SEPARATORS BARGE WALL(S) MUST BE AT LEAST TWO INCHES BELOW THE TRAPS WATER LEVEL. WATER MUST BE ABLE TO FREELY FLOW OVER THE ENTIRE WIDTH OF THE BARGE WALL.



ELECTRICAL SERVICE DETAIL
N.T.S. 208V 3 PHASE

SITE LIGHTING

EXTERIOR LIGHTING SHALL BE SHADED OR INWARDLY DIRECTED IN SUCH A MANNER SO THAT NO DIRECT LIGHTING OR GLARE BE CAST BEYOND THE PROPERTY LINE. THE INTENSITY OF SUCH LIGHTING SHALL NOT EXCEED ONE FOOT CANDLE AS MEASURED AT THE ABUTTING PROPERTY LINE.



DAMMON ENGINEERING, INC.
CHIEF ENGINEER
EMMETT DAMMON, P.E.

CHIEF ARCHITECT
ROBERT WILTSE

1095 FLORIDA AVENUE
SLIDELL, LA. 70458
OFFICE 985-649-5832
FAX 985-641-5950

WWW.DAMMONENGINEERING.COM
WEBSITE
EMAIL: DAMMONEN@BELLSOUTH.NET

ARCHITECTURE
ENGINEERING
STUDIES
PLANNING
INVESTIGATION
EXPERT WITNESS

CECIL BOYD'S
CAR WASH
LOT 5A
EAST HALL ST.
SLIDELL, LA

SITE UTILITIES & ILLUMINATION PLAN

REV: 09-28-10

SCALE: AS NOTED

JOB#: 2074

DATE: 09-13-10

SHEET 6

C-5

OF 18

SITE UTILITIES & ILLUMINATION PLAN

SCALE: 1" = 10'

