

DAMMON ENGINEERING, INC.

CHIEF ENGINEER
EMMETT DAMMON, P.E.
CHIEF ARCHITECT
ROBERT WILTSE

1095 FLORIDA AVENUE
SLIDELL, LA. 70458
OFFICE: 985-649-5832
FAX: 985-641-5950

WWW.DAMMONENGINEERING.COM
DAMMONENG@PELSOUTH.NET

ARCHITECTURE
ENGINEERING
STUDIES
PLANNING
INVESTIGATION
EXPERT WITNESS

CECIL BOYD
CAR WASH
4TH ST & EAST HAL
LOT 1, 3, & 5

CAR WASH
ELEVATIONS

REV:

SCALE AS NOTED

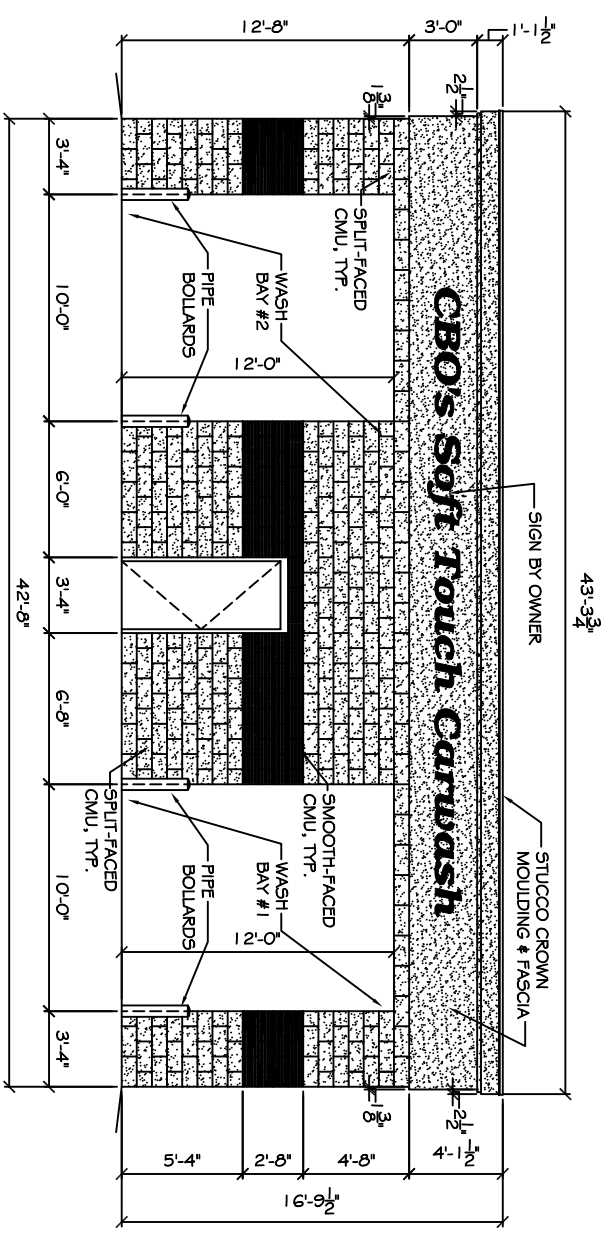
JOB#: 2074

DATE: 08-13-10

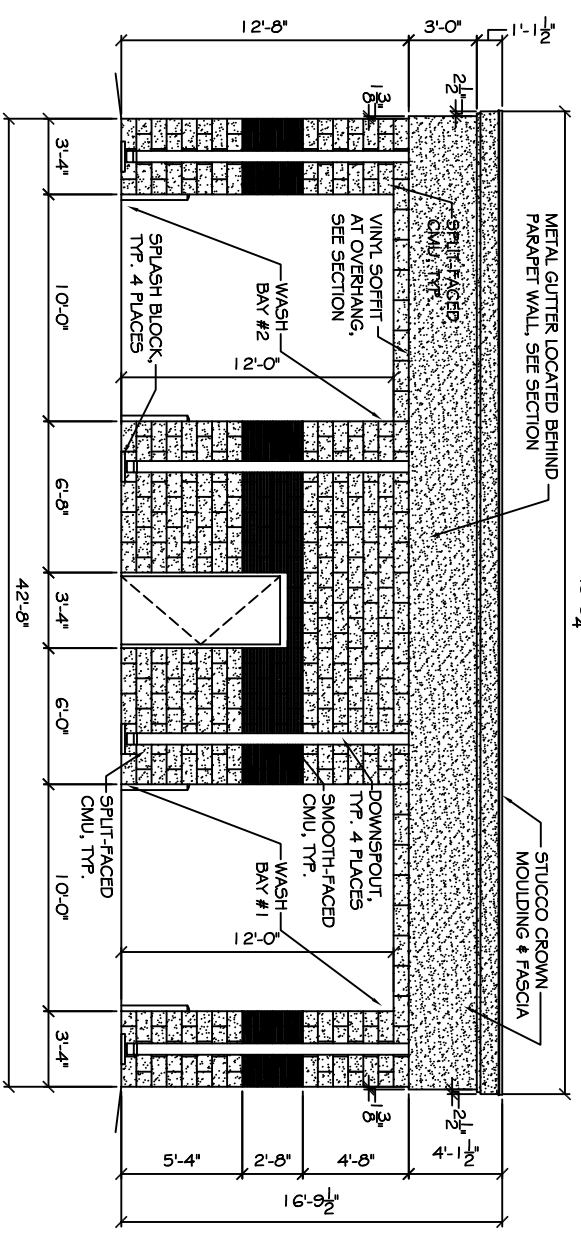
SHEET

A-3

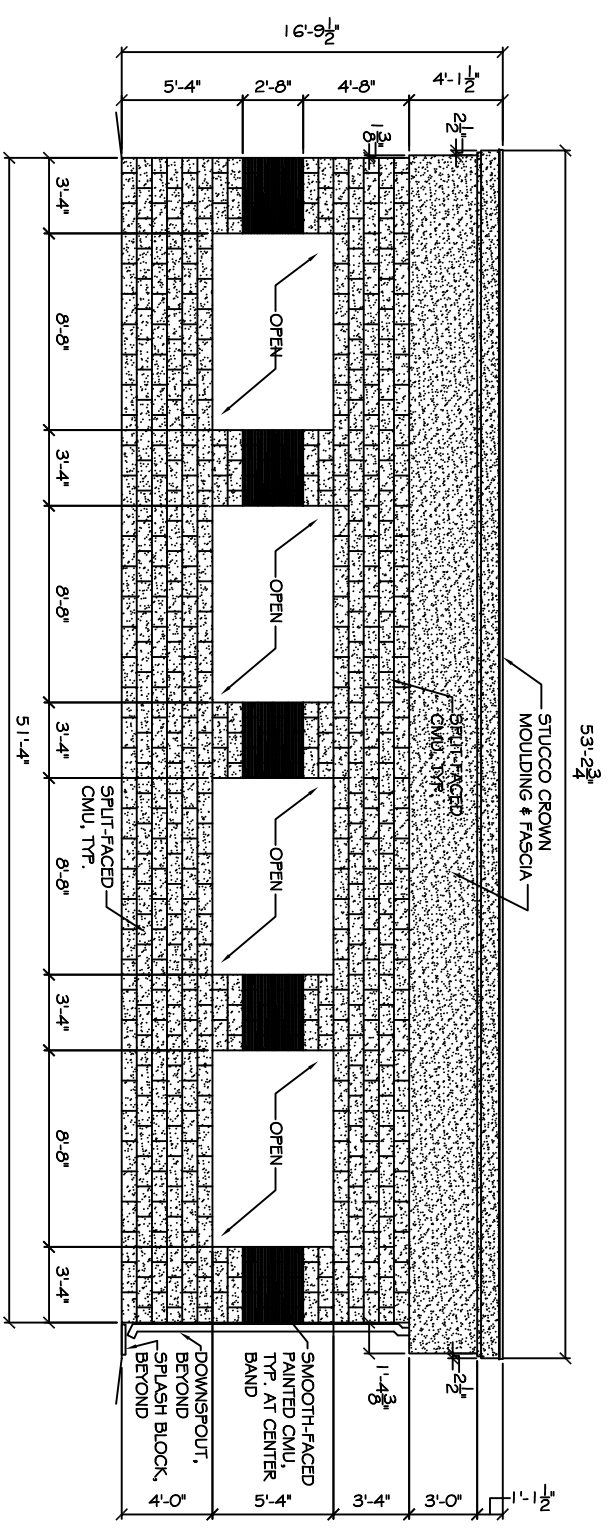
PRELIMINARY (NOT FOR CONSTRUCTION)



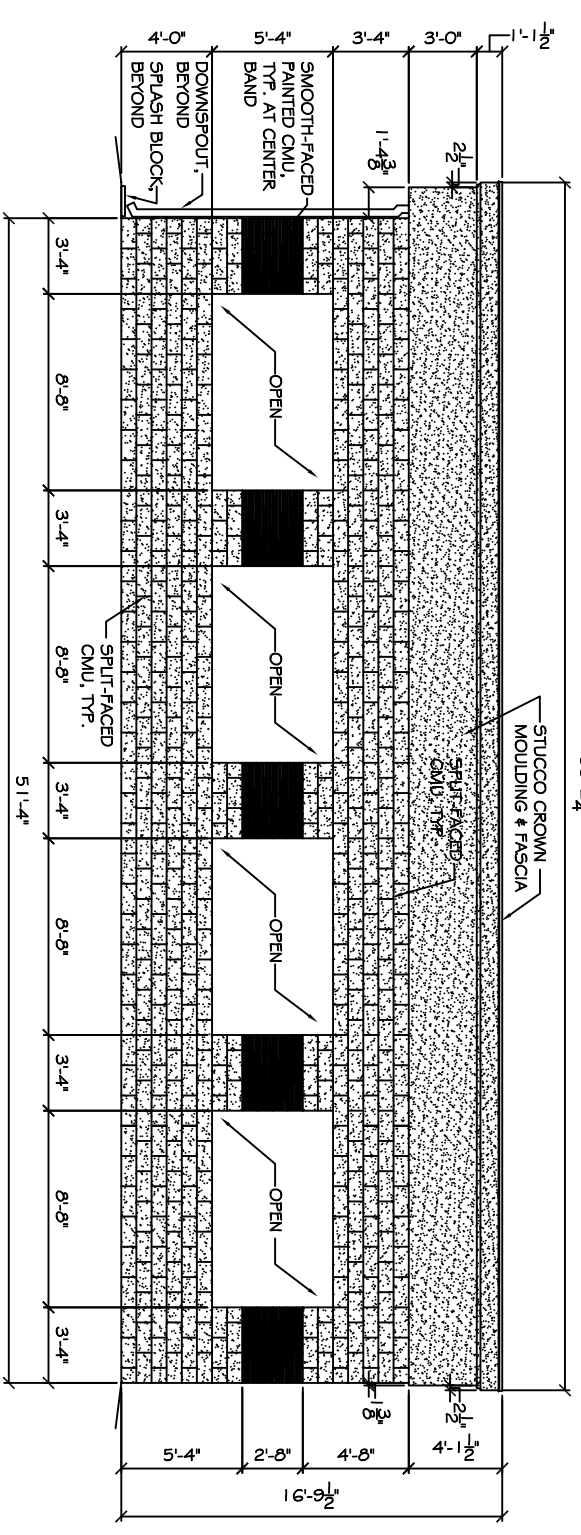
NORTH-FRONT ELEVATION
SCALE 1/4" = 1'



SOUTH-REAR ELEVATION
SCALE 1/4" = 1'



WEST-SIDE ELEVATION
SCALE 1/4" = 1'



EAST-SIDE ELEVATION
SCALE 1/4" = 1'

- EXTERIOR STUCCO SPECIFICATIONS:**
1. COMPLY WITH ASTM C-841 AND C-842. PROVIDE 2 OVERALL THICKNESS ON SELF-FURRING DIAMOND MESH GALVANIZED METAL LATH, 3.4 LB. PER SQUARE YARD. ON TYPICAL STUCCO WRAP. ATTACH LATH AT DIMPLES ONLY. WITH NON-CORROSIVE SCREWS.
 2. METAL LATH AND ALL ACCESSORIES TO BE EQUAL TO YAMICO, TO INCLUDE CORNER BEADS, CAGING BEADS, BASE SCREDS, AND CONTROL JOINTS, ALL INSTALLED WITH NON-CORROSIVE SCREWS. ALL ACCESSORIES TO BE ZINC. ALL CORNERS TO BE MITERED.
 3. STUCCO TO BE INSTALLED IN THREE COATS; SCRATCH, BROWN, AND FINISH. FINISH COAT TO BE ORIENTAL STUCCO WITH SAND FLOAT FINISH BY U. S. GYPSUM.
 4. COMPLY WITH MANUFACTURERS AND INDUSTRY RECOMMENDATIONS. INSTALL LATH IN ACCORDANCE WITH ASTM C-1063.
 5. SUBMIT DATAOUT SHEETS FOR ALL ITEMS IF REQUIRED.