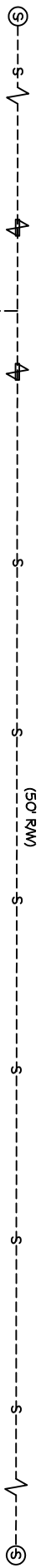


TOP OF MANHOLE
ELEV. 10.9'

EAST HALL AVENUE

EDGE OF ASPHALT

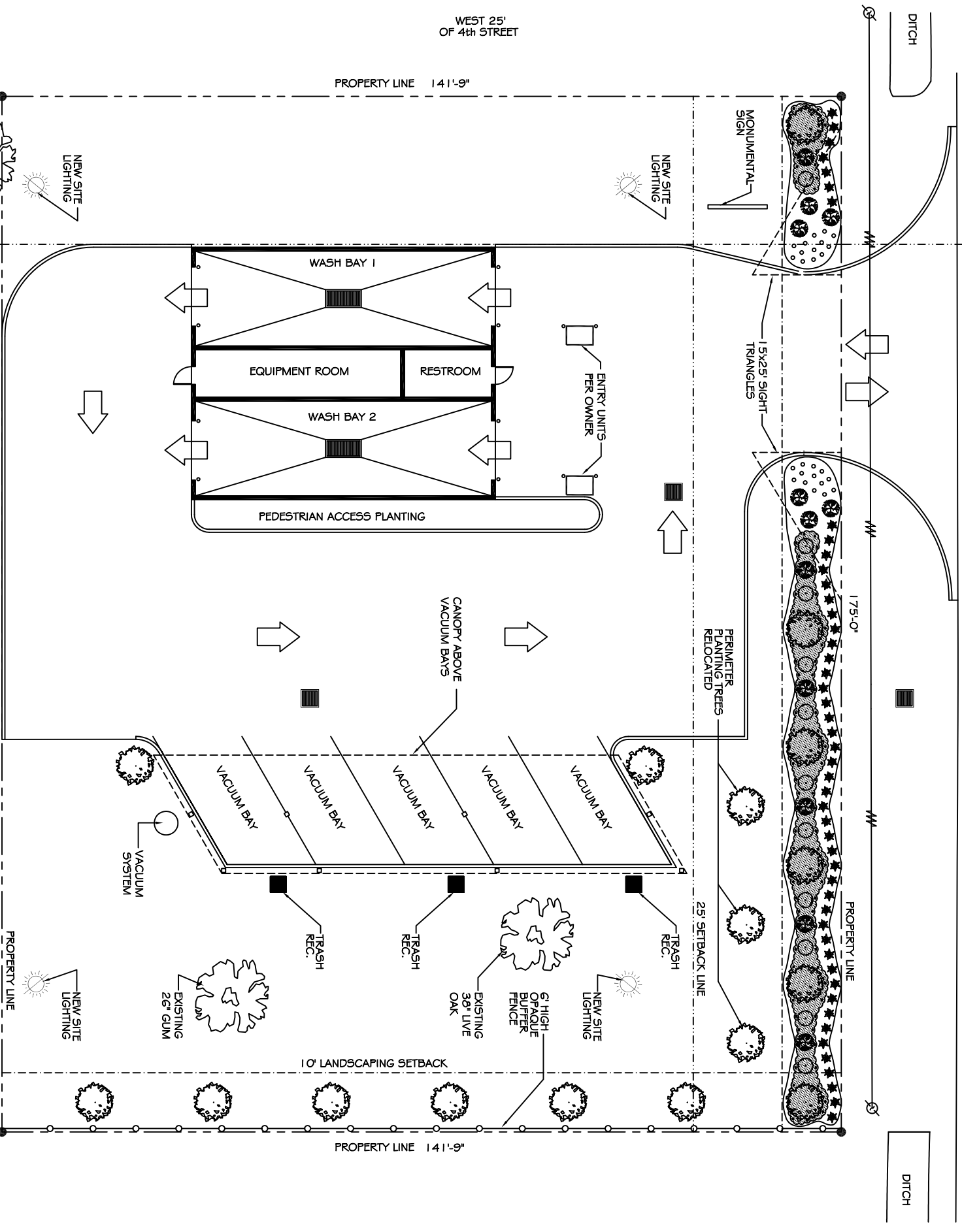


EDGE OF ASPHALT



WEST 25'
OF 4th STREET

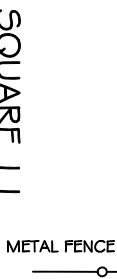
PROPERTY LINE 141'-9"



175'-0"

WIRE FENCE

LOT 7



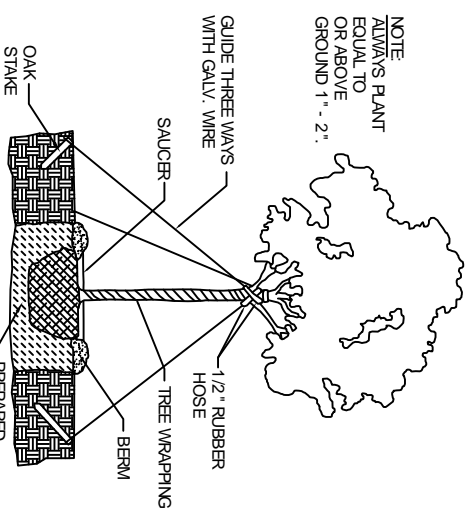
METAL FENCE

SITE LANDSCAPING PLAN
SCALE 1" = 10'

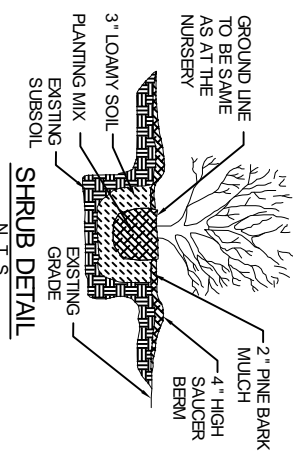


SQUARE 11

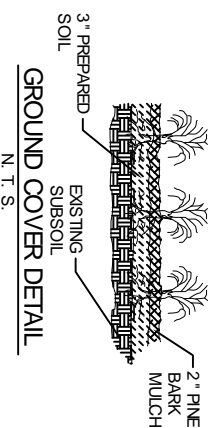
NOTE
ALWAYS PLANT
EQUAL TO
OR ABOVE
GROUND 1'-2'



TYPICAL TREE PLANTING DETAIL
N.T.S.



SHRUB DETAIL
N.T.S.



GROUND COVER DETAIL
N.T.S.

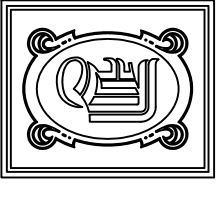
- LANDSCAPE LEGEND**
- CRAPE MYRTLE
 - DWARF GARDENIA
 - BICOLOR IRIS
 - INDIAN HAWTHORNE
 - SPATLEAF
 - VAR. GINGER
 - GRASS
 - PINE MULCH

LANDSCAPE REQUIREMENTS:

PERIMETER PLANTING AREA - A PERIMETER PLANTING AREA AT LEAST TEN (10) FEET IN WIDTH MUST BE PROVIDED OFF THE PUBLIC RIGHT-OF-WAY BETWEEN THE RIGHT-OF-WAY AND PARKING AREA OR STRUCTURES. PLANTING MATERIALS SHOULD ACHIEVE A BALANCE OF LOW-LYING HORIZONTAL SHRUBBERY AND VERTICAL TREES. TREES SHALL BE PLACED NO MORE THAN 20-25 FEET ON CENTER WITH A COMMITMENT OF NO LESS THAN 10 SHRUBS PER TREE.

PARKING LOT PLANTING - PARKING LOT INTERIORS SHOULD BE DESIGNED TO PROVIDE AT LEAST ONE (1) TREE FOR EVERY TWELVE (12) PARKING SPACES. EACH TREE SHOULD BE LOCATED IN A LANDSCAPED ISLAND OF AT LEAST 200 s.f. TREES MUST BE DISTRIBUTED UNIFORMLY SO AS TO PROVIDE A CANOPY EFFECT.

PEDESTRIAN ACCESS PLANTING - LANDSCAPED AREAS MUST BE PROVIDED BETWEEN THE BUILDING FACES HAVING ACCESS AND THE PARKING LOT. FOUR (4) s.f. OF LANDSCAPED AREA SHOULD BE LESS THAN FIVE (5) FEET WIDE AND PLANTING MATERIALS SHOULD ACHIEVE A BALANCE BETWEEN LOW-LYING SHRUBBERY AND VERTICAL TREES.



DAMMON ENGINEERING, INC.

CHIEF ENGINEER
EMMETT DAMMON, P.E.
CHIEF ARCHITECT
ROBERT WALTSE

1095 FLORIDA AVENUE
SUDBL, LA. 70458
OFFICE: 985-649-5832
FAX: 985-641-5950

WWW.DAMMONENGINEERING.COM
EMAIL: DAMMONENG@BBSOUTH.NET

ARCHITECTURE
ENGINEERING
STUDIES
PLANNING
INVESTIGATION
EXPERT WITNESS

CECIL BOYD
CAR WASH
4TH ST & EAST HALL
LOT 1, 3, & 5

SITE
LANDSCAPING
PLAN

REV:
SCALE: AS NOTED
JOB#: 2074
DATE: 08-13-10
SHEET

C-3

PRELIMINARY (NOT FOR CONSTRUCTION)

OF