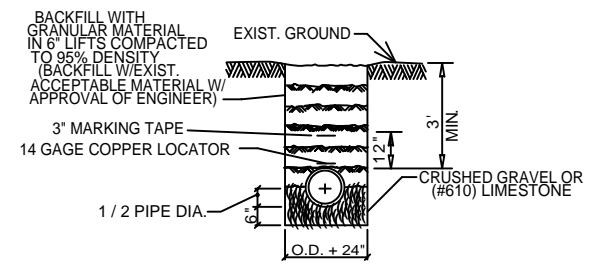


SITE UTILITIES & ILLUMINATION PLAN
SCALE: 1" = 10'

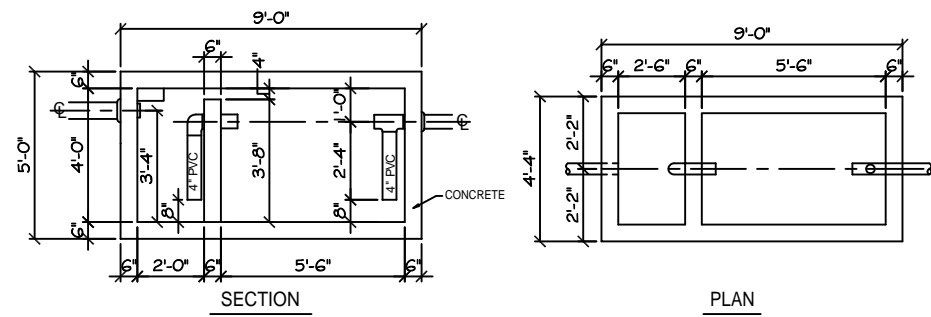
LEGEND

- - - - - PROPERTY LINE
- - - - - BUILDING SETBACK
- - - - - LANDSCAPING SETBACK MINIMUM AND BUFFER ZONE LIMITS AT REAR
- NEW BUILDING OUTLINE
- W — NEW WATER LINE
- S — NEW SEWER LINE
- E — NEW POWER LINE
- - - - - SILT FENCING DETAIL
- - - - - NEW DRAIN LINE

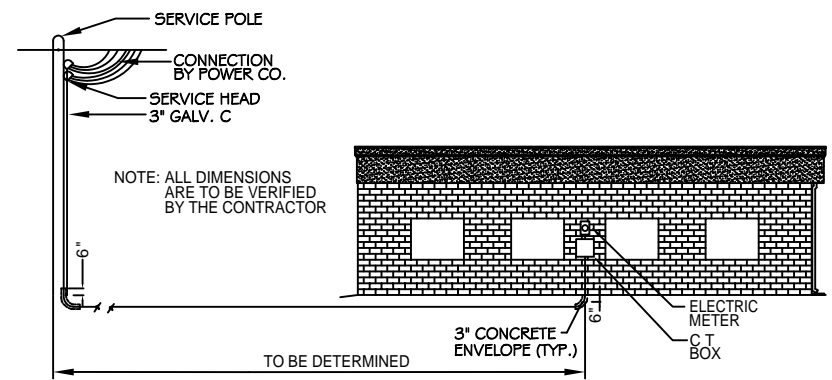


A MIN. 10 FT. HORIZONTAL AND 18" VERTICAL SEPARATION IS REQUIRED BETWEEN WATER & SEWER LINE.

PIPE BEDDING DETAIL FOR SEWER & WATER LINE
N.T.S.

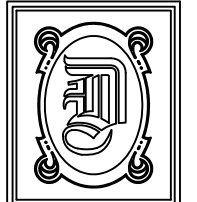


NOTE:
THE OIL/WATER SEPARATOR MUST HAVE A MINIMUM WATER DEPTH OF THREE (3) FEET AND A MINIMUM WATER VOLUME OF 1,000 GALS. IN ADDITION, THE TOP OF THE SEPARATORS BAFFLE WALL(S) MUST BE AT LEAST TWO INCHES BELOW THE TRAPS WATER LEVEL. WATER MUST BE ABLE TO FREELY FLOW OVER THE ENTIRE WIDTH OF THE BAFFLE WALL.



ELECTRICAL SERVICE DETAIL
N.T.S.

SITE LIGHTING
EXTERIOR LIGHTING SHALL BE SHADED OR INWARDLY DIRECTED IN SUCH A MANNER SO THAT NO DIRECT LIGHTING OR GLARE BE CAST BEYOND THE PROPERTY LINE. THE INTENSITY OF SUCH LIGHTING SHALL NOT EXCEED ONE FOOT CANDLE AS MEASURED AT THE ABUTTING PROPERTY LINE.



DAMMON ENGINEERING, INC.

CHIEF ENGINEER
EMMETT DAMMON, P.E.

CHIEF ARCHITECT
ROBERT WILTSE

1095 FLORIDA AVENUE
SLIDELL, LA. 70458
OFFICE: 985-649-5832
FAX: 985-641-5950

WEBSITE:
WWW.DAMMONENGINEERING.COM

EMAIL:
DAMMONENG@BELLSOUTH.NET

- ARCHITECTURE
- ENGINEERING
- STUDIES
- PLANNING
- INVESTIGATION
- EXPERT WITNESS

CECIL BOYD'S
CAR WASH
LOT 5A
EAST HALL ST.
SLIDELL, LA

SITE UTILITIES & ILLUMINATION PLAN

REV:

SCALE: AS NOTED

JOB#: 2074

DATE: 09-13-10

SHEET 6

C-5

OF 18