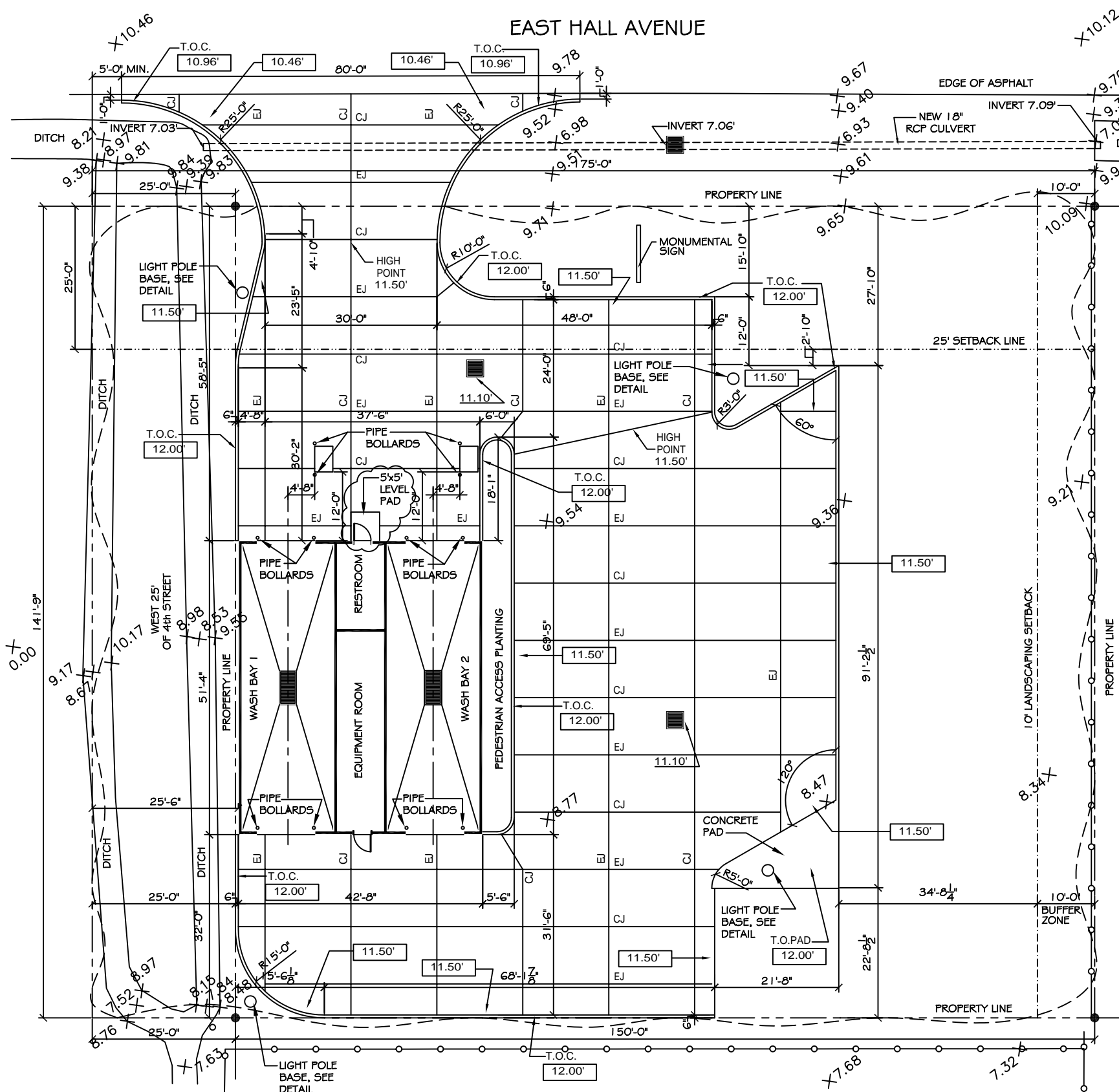


EDGE OF ASPHALT

# EAST HALL AVENUE



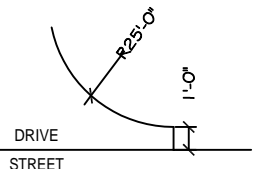
**SITE PAVING PLAN**  
SCALE: 1"=10'



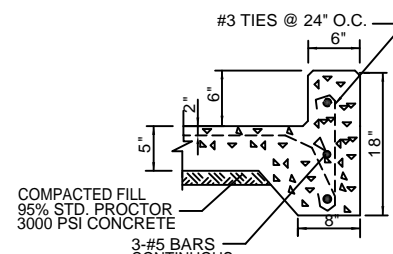
## LEGEND:

- PROPERTY LINE
- BUILDING SETBACK MINIMUM
- NEW BUILDING
- NEW DROP INLET w/TEMP. SILT FENCING
- CONTROL JOINT
- EXPANSION JOINT
- T.O. GRATE ELEVATION
- INVERT ELEVATION
- NEW ELEVATIONS
- TEMPORARY SILT FENCING
- NEW 6" CURB, SEE DETAIL THIS SHEET
- NEW 6" PIPE BOLLARDS
- EXISTING SURVEY TOPO POINTS

**TYPICAL ENTRANCE DETAIL**  
N.T.S.



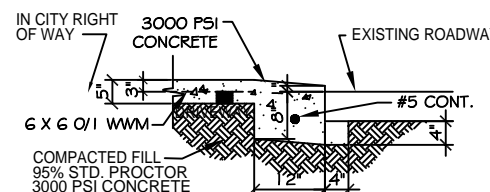
**TYPICAL CURB DETAIL**  
N.T.S.



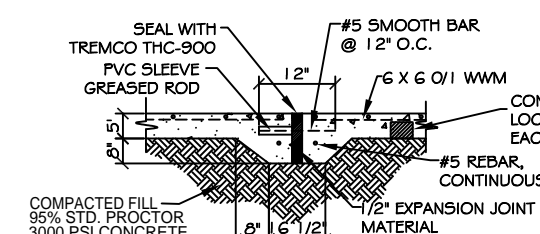
**TEMP. ENTRANCE DETAIL**  
N.T.S.



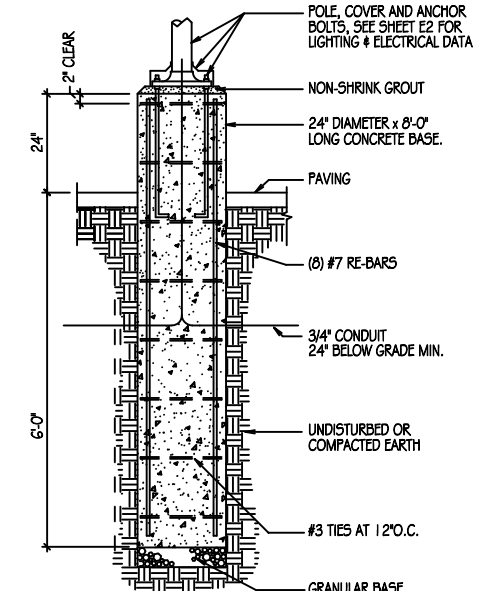
**DRIVEWAY SECTION (DS)**  
N.T.S.



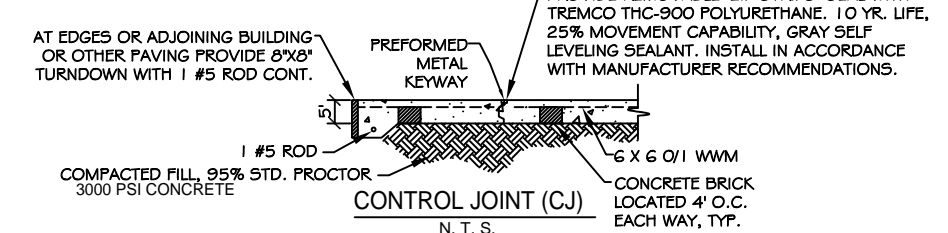
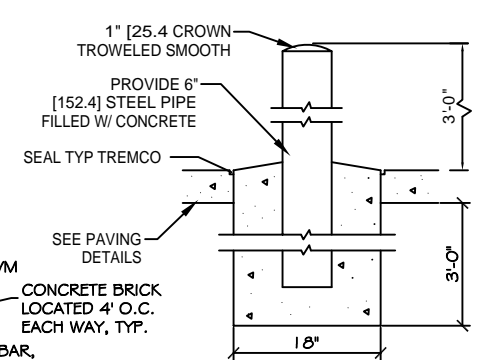
**EXPANSION JOINT (EJ)**  
N.T.S.



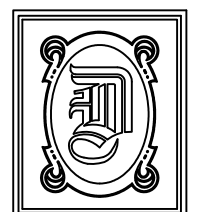
**LIGHT POLE DETAIL**  
N.T.S.



**PIPE BOLLARD DETAIL**  
N.T.S.



**CONTROL JOINT (CJ)**  
N.T.S.



## DAMMON ENGINEERING, INC.

CHIEF ENGINEER  
EMMETT DAMMON, P.E.

CHIEF ARCHITECT  
ROBERT WILTSE

1095 FLORIDA AVENUE  
SLIDELL, LA. 70458  
OFFICE: 985-649-5832  
FAX: 985-641-5950

WEBSITE:  
WWW.DAMMONENGINEERING.COM

EMAIL:  
DAMMONENG@BELLSOUTH.NET

- ARCHITECTURE
- ENGINEERING
- STUDIES
- PLANNING
- INVESTIGATION
- EXPERT WITNESS

CECIL BOYD'S  
CAR WASH  
LOT 5A  
EAST HALL ST.  
SLIDELL, LA

## PAVING PLAN

REV: 09-28-10

SCALE: AS NOTED

JOB#: 2074

DATE: 09-13-10

SHEET 4

# C-3

OF 18