

BM Nail in  
Power Pole

Mag Nail  
(TBM 35FT)

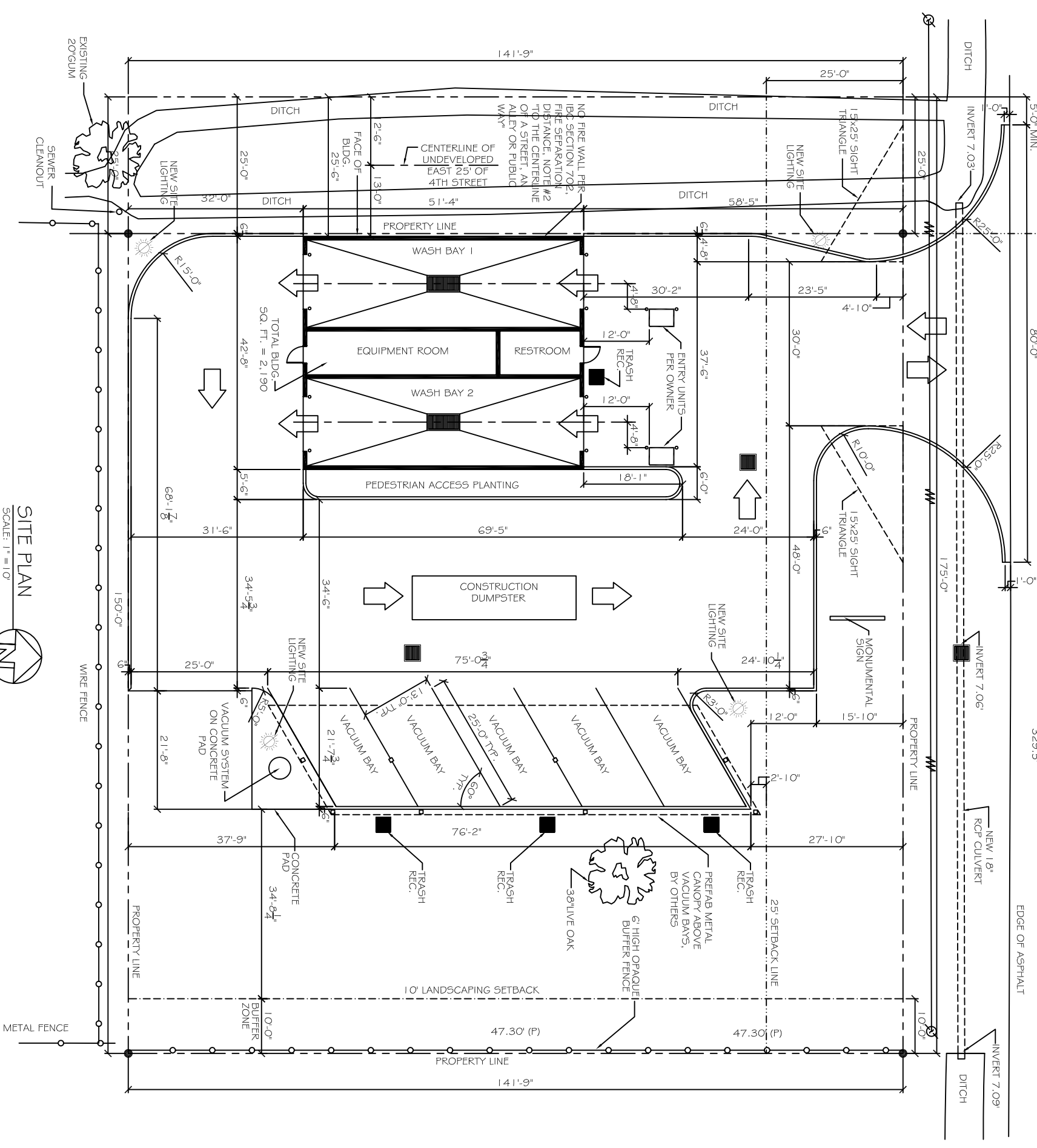
EDGE OF ASPHALT

TOP OF MANHOLE  
ELEV. 10.9'

EAST HALL AVENUE

TOP OF MANHOLE  
ELEV. 10.2'

5'-0" MIN. 80'-0" 519.1' (50' R/W) 329.5' EDGE OF ASPHALT



SITE PLAN  
SCALE: 1" = 10'



**SITE LEGEND**

- PROPERTY LINE
- UTILITY / EASEMENT LINE
- BUILDING SETBACK MINIMUM
- TRIANGULAR SITE LINE
- LANDSCAPING SETBACK MINIMUM AND BUFFER ZONE LIMITS AT REAR
- OPAQUE BUFFER FENCE
- BUILDING OUTLINE
- TRASH RECEPTACLE

WOODEN FENCE MUST BE 8'-0" ABOVE DUMPSTER SLAB LEVEL.

FOUNDATION

**WOODEN FENCE DETAIL**  
N.T.S.

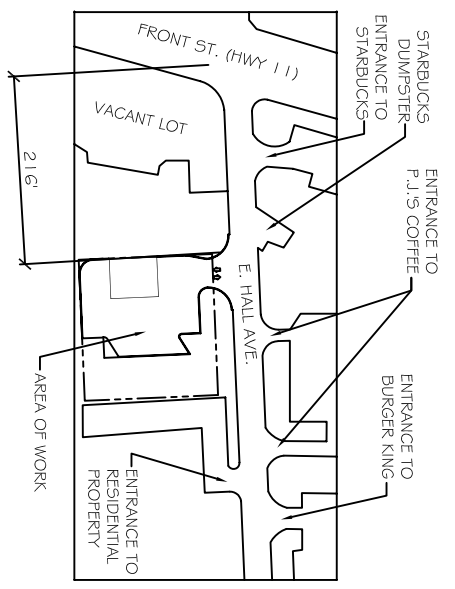
NOTE:  
PAVEMENT IN ALL PARKING AREAS SHALL BE 5" THICK CONCRETE.

**SITE LIGHTING**

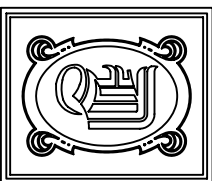
EXTERIOR LIGHTING SHALL BE SHADED OR UNIMPARLY DIRECTED IN SUCH A MANNER SO THAT NO DIRECT LIGHTING OR GLARE BE CAST BEYOND THE PROPERTY LINE. THE INTENSITY OF SUCH LIGHTING SHALL NOT EXCEED ONE FOOT CANDLE AS MEASURED AT THE ADJUTING PROPERTY LINE.

**SITE PLAN NOTES**

1. ROOFING MATERIAL: METAL ROOFING PANEL
2. SIDING MATERIAL: CONVENTIONAL STUCCO VENERE & CWJ.
3. UTILITIES: ALL UTILITIES SHALL BE PLACED UNDERGROUND



**VICINITY MAP**  
N.T.S.



**DAMMON**  
ENGINEERING, INC.

CHIEF ENGINEER  
EAMLETT  
DAMMON, P.E.

CHIEF ARCHITECT  
ROBERT  
WILTSE

1095 FLORIDA AVENUE  
SLIDELL, LA. 70456  
OFFICE: 985-649-5832  
FAX: 985-641-5950

WEBSITE:  
WWW.DAMMONENGINEERING.COM  
EMAIL:  
DAMMONENR@BELL SOUTH.NET

ARCHITECTURE  
ENGINEERING  
STUDIES  
PLANNING  
INVESTIGATION  
EXPERT WITNESS

CECIL BOYDS  
CAR WASH  
LOT 5A  
EAST HALL ST.  
SLIDELL, LA

SITE  
PLAN

REV:

SCALE: AS NOTED

JOB#: 2074

DATE: 09-13-10

SHEET 3

C-2

OF 18