

DAMMON ENGINEERING, INC.

CHIEF ENGINEER
EMMETT
DAMMON, P.E.

CHIEF ARCHITECT
ROBERT
WILTSE

554 OLD SPANISH TRAIL
SLIDELL, LA. 70458
OFFICE: 985-649-5832
FAX: 985-641-5950

WEBSITE:
WWW.DAMMONENGINEERING.COM

EMAIL:
DAMMONENG@BELLSOUTH.NET

- ARCHITECTURE
- ENGINEERING
- STUDIES
- PLANNING
- INVESTIGATION
- EXPERT WITNESS

NEW
RESIDENTIAL
COMMUNITY
HOME

STARC WEST
1705 VIOLA ST
MANDEVILLE, LA

COPY OF
SURVEY

Robert Wiltse

REV:

SCALE: AS NOTED

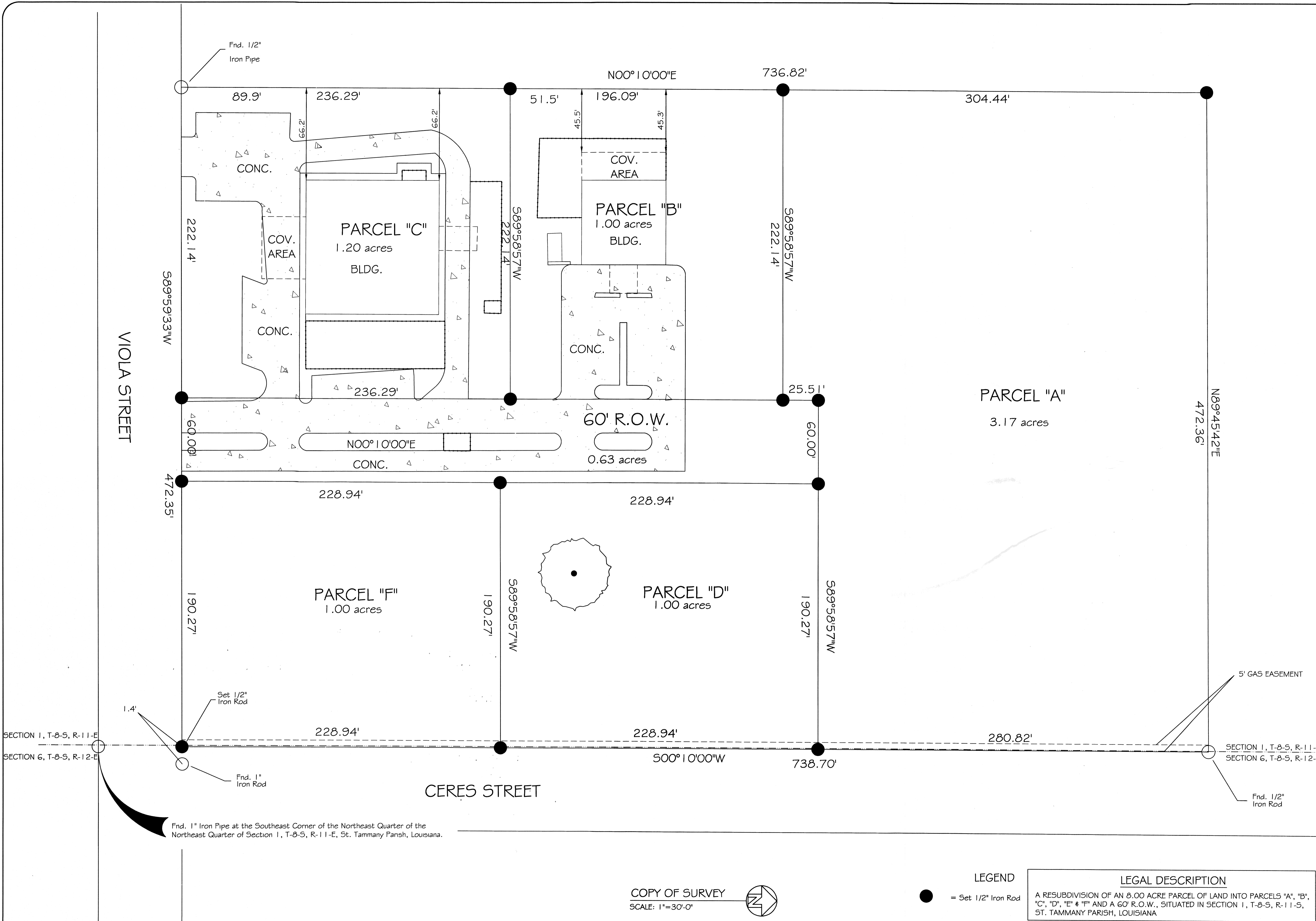
JOB#: 2081

04-08-2011

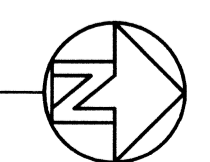
SHEET 2

C-1

OF 17



COPY OF SURVEY
SCALE: 1"=30'-0"



LEGEND

● = Set 1/2" Iron Rod

LEGAL DESCRIPTION

A RESUBDIVISION OF AN 8.00 ACRE PARCEL OF LAND INTO PARCELS "A", "B", "C", "D", "E" & "F" AND A 60' R.O.W., SITUATED IN SECTION 1, T-8-S, R-11-S, ST. TAMMANY PARISH, LOUISIANA

Fnd. 1" Iron Pipe at the Southeast Corner of the Northeast Quarter of the Northeast Quarter of Section 1, T-8-S, R-11-E, St. Tammany Parish, Louisiana.