

DAMMON ENGINEERING, INC.

CHIEF ENGINEER
EMMETT DAMMON, P.E.

CHIEF ARCHITECT
ROBERT WILTSE

554 OLD SPANISH TRAIL
SLIDELL, LA. 70458
OFFICE: 985-649-5832
FAX: 985-641-5950

WEBSITE:
WWW.DAMMONENGINEERING.COM

EMAIL:
DAMMONENG@BELLSOUTH.NET

ARCHITECTURE
ENGINEERING
STUDIES
PLANNING
INVESTIGATION
EXPERT WITNESS

NEW RESIDENTIAL COMMUNITY HOME

STARC WEST
1705 VIOLA ST
MANDEVILLE, LA

LIGHTING PLAN

Robert Wiltse

REV:

SCALE: AS NOTED

JOB#: 2081

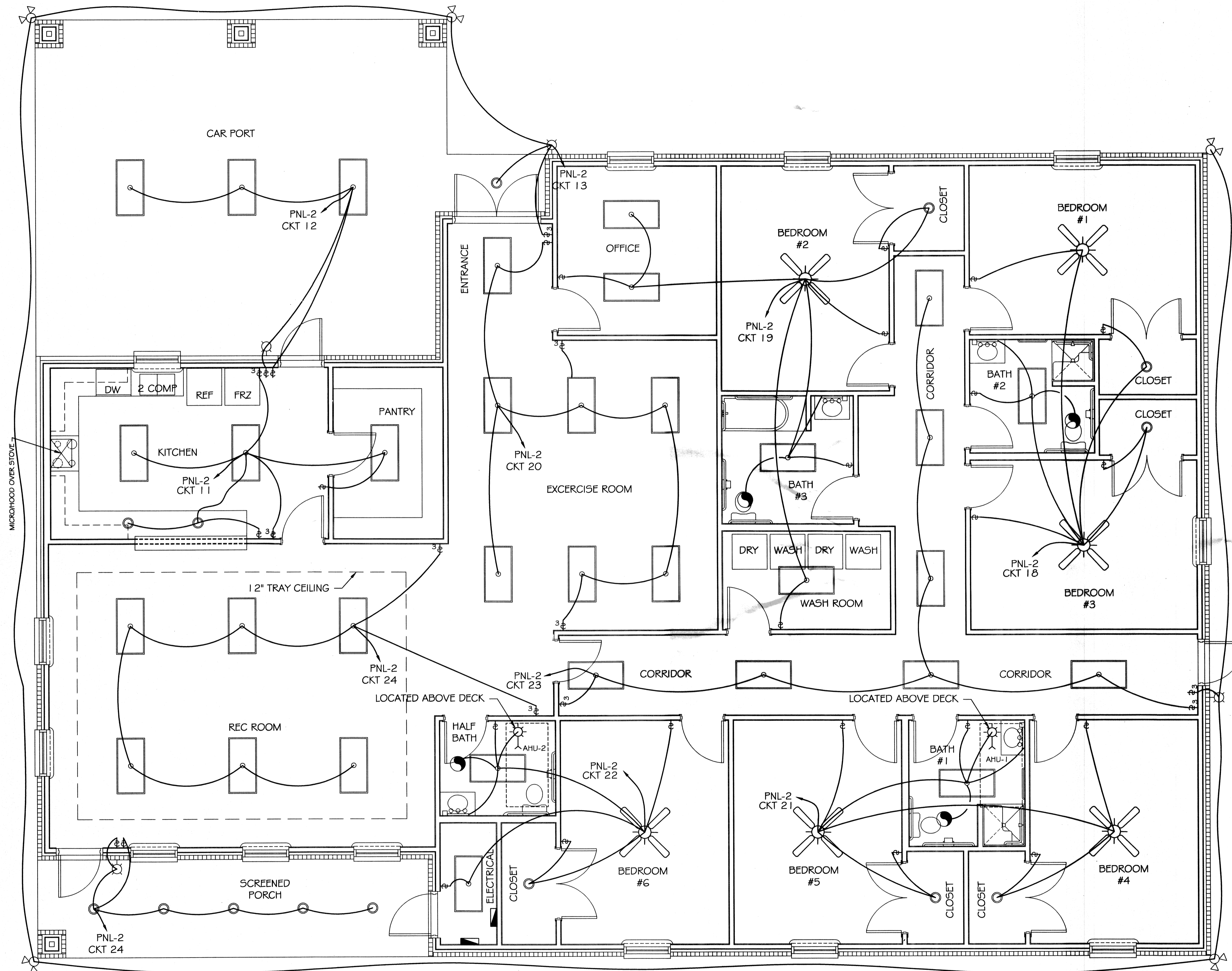
DATE: 04-08-2011

SHEET 15

E-2

OF 17

SYMBOL LEGEND	
SYM.	DESCRIPTION
○	4-1/2" RECESSED DOWNLIGHT, LYTEPOINTS 300X SERIES, ADJUSTABLE AZLAK CONE HALOGEN MR16 50W LAMP, UNIT# 305WHWX, FRAME-IN KIT #302MRIC7X
□	STANDARD LAY-IN 2x4' LIGHT FIXTURE WITH 4 LAMPS & PRISMATIC LENS
⚡	SWITCH
⚡ ³	3-WAY SWITCH
☀	PULL-CHAIN INCANDESCENT UTILITY LIGHT IN ATTIC NEAR AHU'S
☀	FLOOD LIGHT WITH PHOTOCELL
☀	WALL MTD. EXTERIOR LIGHT ON TIMER OR PHOTOCELL
✂	FAN WITH LIGHT KIT
□	LIGHT WITH WALL MOUNTED BAR



LIGHTING PLAN
SCALE: 1/4"=1'