

CHAMPAGNE BUILDING, LLC

2242 CAREY STREET BUILD-OUT

RENOVATION DETAILS:

- HURRICANE DAMAGED BUILDING.
- RENOVATIONS LESS THAN 50% VALUE OF BUILDING.
- BUILDING LOCATED IN SLIDELL HISTORIC PRESERVATION DISTRICT.
- BUILDING IN THE "MAIN STREET LOUISIANA" PROGRAM.

INTERNATIONAL EXISTING BUILDING CODE 2006

OCCUPANCY CLASSIFICATION:
BUSINESS, GROUP B (SEC 304.1)

ALTERATION CLASSIFICATION:
LEVEL 2 (SEC 404.1)

OCCUPANT LOAD: (TBL 1004.1.1)
BUSINESS AREAS = 100 GROSS SQ.FT. / OCCUPANT
2,540 SQ.FT. GROSS BUILDING = TOTAL OF 25 OCCUPANTS

EXIT ACCESS TRAVEL DISTANCE: (SEC 1016)
EXIT ACCESS TRAVEL DISTANCE = 200' NON-SPRINKLED

EXIT ACCESS REQUIREMENTS: (SEC 1019)
EXIT REQUIRED FOR < 49 OCCUPANTS IN MERCANTILE OCCUPANCY (10 EXITS PROVIDED)
EXIT ACCESS TRAVEL DISTANCE = 200' UNSPRINKLED

ALLOWABLE HEIGHT AND BLDG. AREA: (TBL 503)
B=23,000 SQ.FT. / 4 STORY ALLOWED, THIS PROJECT 1 STORY / 2,540 SQ.FT.

CONSTRUCTION CLASSIFICATION: (SEC 602.2)
TYPE VB

FIRE RESISTANCE RATING REQUIREMENTS FOR BLDG. ELEMENTS: (TBL 601)
STRUCTURAL FRAME= 0 HRS.
BEARING WALLS (INTERIOR AND EXTERIOR)= 0 HRS.
NON-BEARING WALLS= 0 HRS.
FLOOR CONSTRUCTION= 0 HRS.
ROOF CONSTRUCTION= 0 HRS.

FIRE RESISTANCE RATING REQUIREMENTS FOR EXTERIOR WALLS: (TBL 602)
EXTERIOR WALLS WITH <30' FIRE SEPARATION DISTANCE = 0 HR.

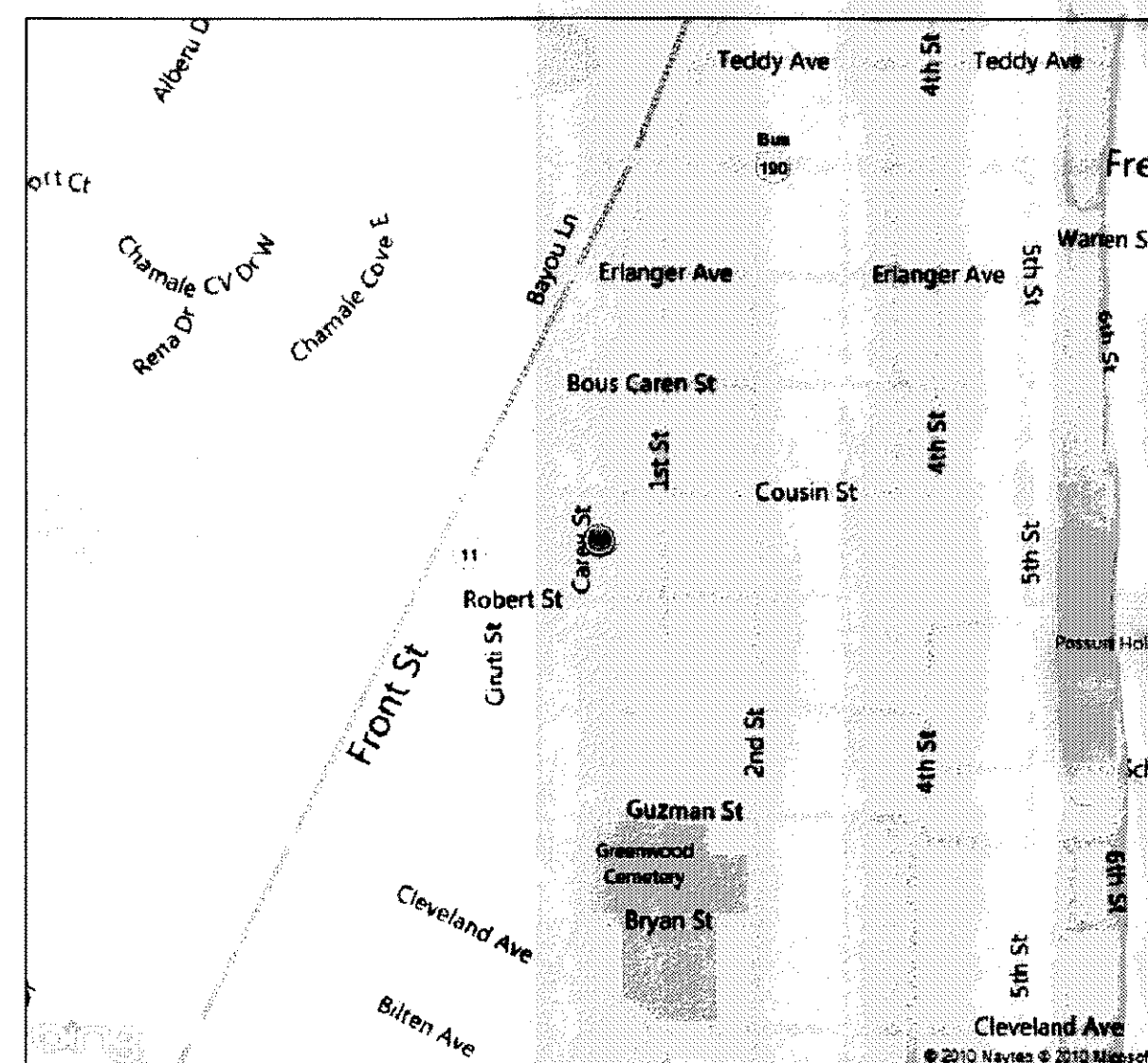
FIRE ALARM SYSTEM REQUIREMENTS: (SEC 907)
THIS BLDG. DOES NOT REQUIRE A FIRE ALARM SYSTEM IN ACCORDANCE WITH SEC 907.2.2

CONSTRUCTION DOCUMENTS: (SEC 1603)
THIS BLDG. SHALL BE DESIGNED IN ACCORDANCE WITH IBC SECTION 1609 AS A FULLY ENCLOSED BLDG. USING THE FOLLOWING INFORMATION:

WIND DESIGN DATA:
DETERMINATION OF WIND LOADS SHALL BE IN ACCORDANCE WITH IBC SEC 1609.4
BASIC WIND SPEED (3 SECOND GUSTS) = 130 MPH (FIG 1609)
IMPORTANCE FACTOR: CATEGORY II BLDG., IE = 1.00, IS = 1.0, IW = 1.00 (TBL 1604.5)
EXPOSURE B
DESIGN WIND PRESSURE (ASCE 7-05 FIG. 6-2): 33.6 PSF
INTERNAL PRESSURE COEFFICIENT (ASCE 7-05 FIG. 6-5): ± 0.18
LIVE LOADS: (SEC 1607)
LOBBIES AND 1st FLR. CORRIDOR (TBL. 1607.1): 100 PSF
OFFICE (TBL. 1607.1): 50 PSF
ROOF LIVE LOAD (TBL. 1607.1) = 20 PSF UNIFORM, 300 LB. CONCENTRATED
GROUND SNOW LOAD (FIG. 1608.2) = 5 PSF

2,540 SQ. FT.
NON-SPRINKLED

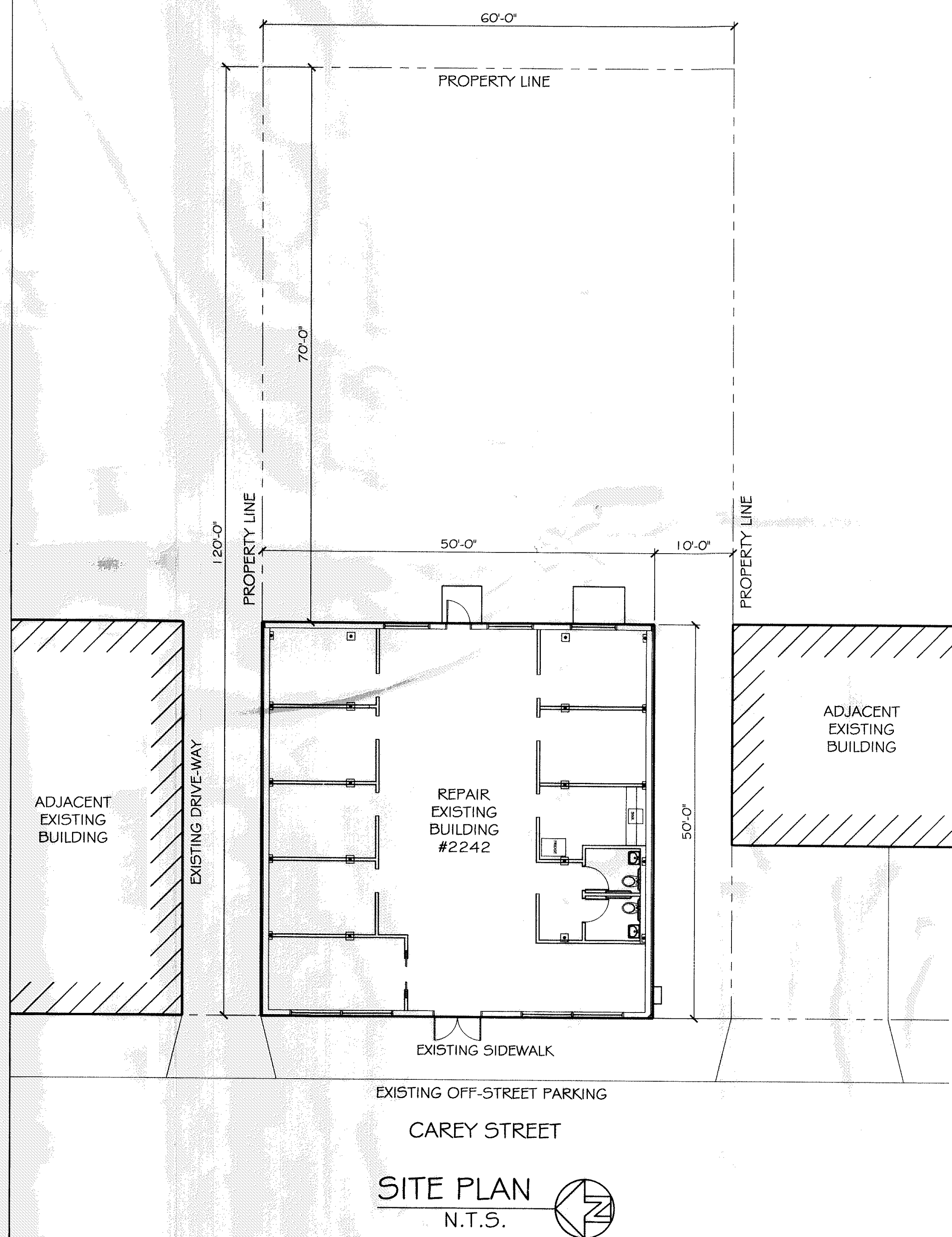
INDEX OF DRAWINGS		
SHT#	DWG#	DRAWING NAME
1		COVER SHEET W/ SITE PLAN
2	A-1	FLOOR PLAN
3	A-2	CROSS SECTION AND DETAILS
4	M-1	MECHANICAL PLAN
5	E-1	ELECTRICAL PLAN
6	P-1	PLUMBING PLAN



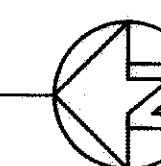
VICINITY MAP
N.T.S.



Robert [Signature]



SITE PLAN
N.T.S.

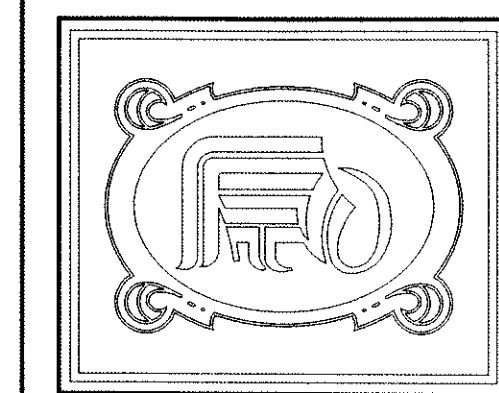


PRELIMINARY (NOT FOR CONSTRUCTION)

CHAMPAGNE BUILDING LLC
TENANT BUILD-OUT
2242 CAREY STREET
SLIDELL, LA 70458

DATE: 11-12-10
JOB NO. 2086

DAMMON ENGINEERING, INC.
OFFICE: (985) 649-5832
FAX: (985) 641-5950
WEBSITE: WWW.DAMMONENGINEERING.COM
EMAIL: DAMMONENG@BELLSOUTH.NET



SHEET 1
OF 6