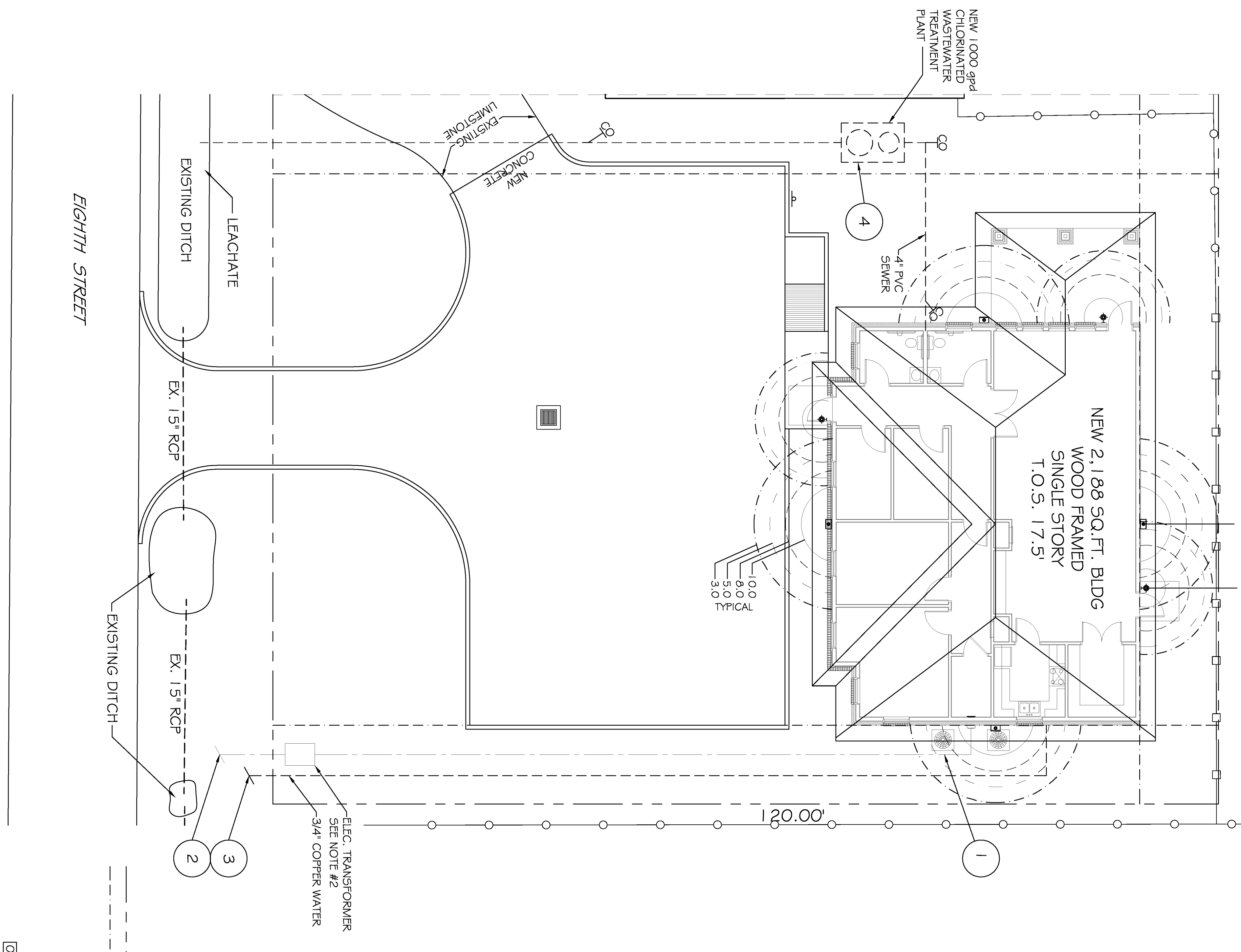
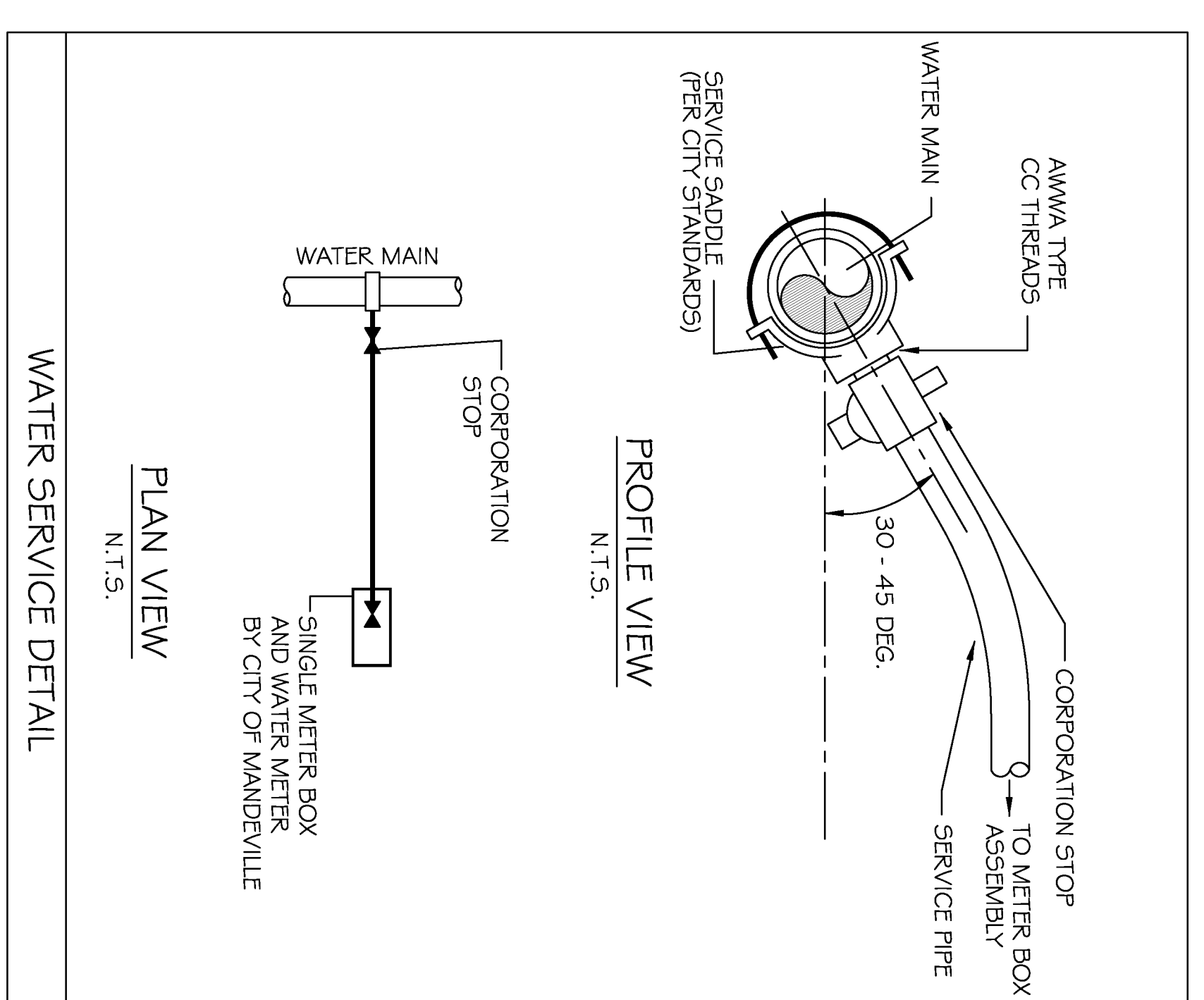
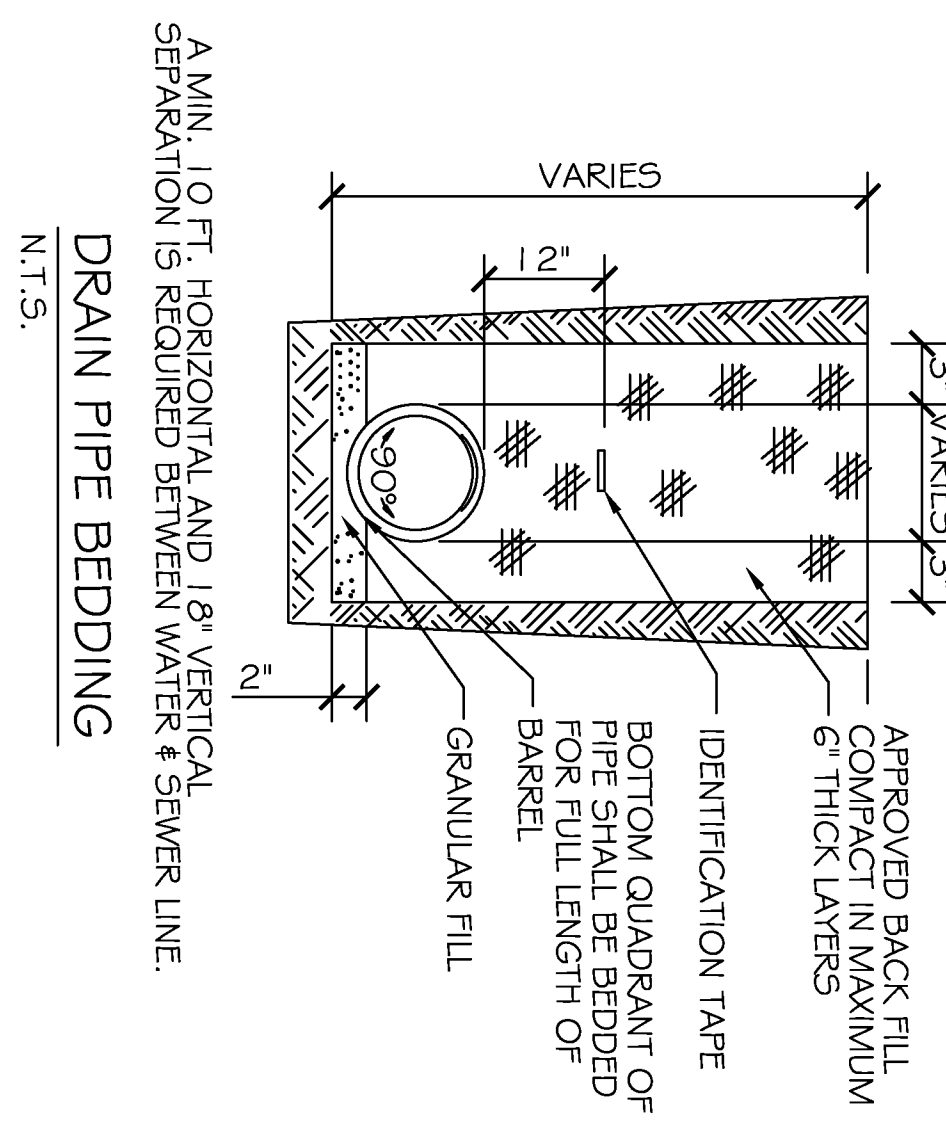


SITE LIGHTING

EXTERIOR LIGHTING SHALL BE SHADED OR INWARDLY DIRECTED IN SUCH A MANNER SO THAT NO DIRECT LIGHTING OR GLARE BE CAST BEYOND THE PROPERTY LINE. THE INTENSITY OF SUCH LIGHTING SHALL NOT EXCEED ONE FOOT CANDLE AS MEASURED AT THE ADJUTING PROPERTY LINE. (N/A)

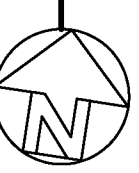


LEGEND

- PROPERTY LINE
- BUILDING SETBACK MINIMUM
- NEW DROP INLET W/TEMP. SILT FENCE CONTROL JOINT 10x15'
- EXPANSION JOINT 30x45'
- T.O. GRATE ELEVATION
- INVERT ELEVATION
- NEW ELEVATIONS
- EXISTING ELEVATIONS
- TEMPORARY SILT FENCING
- NEW 6" CURB, SEE DETAIL THIS SHEET

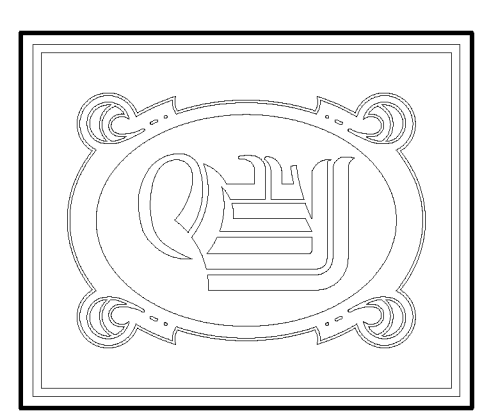
EIGHTH STREET

UTILITY PLAN
SCALE: 1/8" = 1'-0"



UTILITY NOTES: #

1. 5GH, 60 PVC CONDUIT WHERE PIPE IS EXPOSED OUTSIDE OF BUILDING WALL. TRANSITION BACK TO SCH. 40 PVC @ 90° PVC ELBOW BELOW GRADE. ALL 90° FITTINGS TO BE 36" LONG SWEEP TYPE.
2. COORDINATE WITH ELEC. COMPANY REGARDING ELECTRICAL SERVICE AND PLACEMENT OF TRANSFORMER.
3. THE NEW WATER SERVICE INTO EXISTING WATER MAIN ON EIGHTH STREET, FIELD VERIFY LOCATION. SEE DETAIL THIS SHEET
4. PROVIDE FULLY OPERATIONAL SEWER TREATMENT SYSTEM IN ACCORDANCE WITH MANUFACTURERS DETAILS AND RECOMMENDATIONS FOR ACTUAL EQUIPMENT INSTALLED.



DAMMON ENGINEERING, INC.
 CHIEF ENGINEER
 ENNETT DAMMON, P.E.
 CHIEF ARCHITECT
 ROBERT WILTSE

554 OLD SPANISH TRAIL
 SUITE 11, LA. 70456
 OFFICE: 985-649-5632
 FAX: 985-641-5950
 WWW.DAMMONENGINEERING.COM
 EMAIL: DAMMONENG@BELL.SOUTH.NET

ARCHITECTURE
 ENGINEERING
 STUDIES
 PLANNING
 INVESTIGATION
 EXPERT WITNESS

PAUL REES
 OFFICE BUILDING
 2271 8TH. ST.
 MANDEVILLE, LA
 70471

UTILITY PLAN

REV:

SCALE: AS NOTED
 JOB#: 2104
 DATE: 05-20-11
 SHEET 6

C-5

OF 20