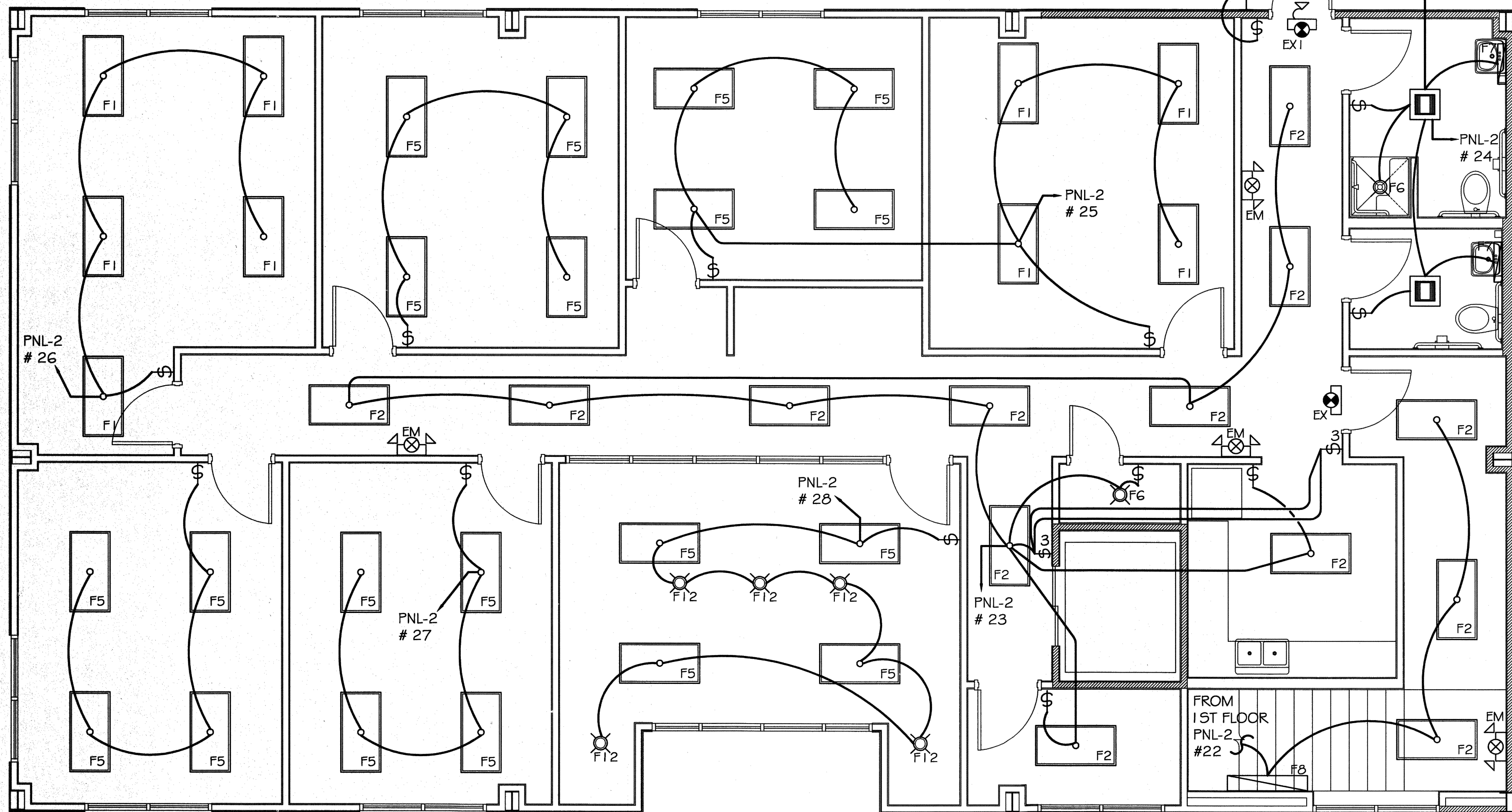


1ST FLR LIGHTING PLAN

SCALE: 1/4" = 1'-0"



2ND FLR LIGHTING PLAN

SCALE: 1/4" = 1'-0"

LIGHTING FIXTURE SCHEDULE				
LABEL	DESCRIPTION	MANUFACTURER PRODUCT #	LAMPS	QTY
F1	2x4 RECESSED FLOURESCENT 3' PARABOLIC TROFFER	LITHONIA LIGHTING 2PM3N 3 32 MVOLT 1/3 GEB1015	3-T8 32W FLOURESCENT 120V	16
F2	2x4 RECESSED FLOURESCENT #A1 2 LENS	LITHONIA LIGHTING 2GT8 2 32 A1 2 MVOLT GEB1015	2-T8 32W FLOURESCENT 120V	23
F3	RECESSED DOWNLIGHT WHITE TRIM FLANGE	LITHONIA LIGHTING L7XF18T MVOLT 702A TRW	1-18W COMPACT FLOURESCENT 120V	5
F4	8 FT SURFACE MOUNTED TANDEM STRIP W/ WHITE HOUSING	LITHONIA LIGHTING TZ 2 32 MVOLT 1/4 GEB1015	4-T8 32W FLOURESCENT 120V	13
F5	2x4 RECESSED FLOURESCENT #A1 2 LENS	LITHONIA LIGHTING 2GT8 4 32 A1 2 MVOLT 1/4 GEB1015	4-T8 32W FLOURESCENT 120V	20
F6	SURFACE MOUNTED FLOURESCENT	LEVITON 9860 LHG	1-13W FLOURESCENT 120V	5
F7	COMMERCIAL WALL BRACKET 24" LONG	LITHONIA LIGHTING WC 2 17 MVOLT GEB1015	2-T8 17W FLOURESCENT 120V	4
F8	COMMERCIAL WALL BRACKET 48" LONG	LITHONIA LIGHTING WC 2 32 MVOLT GEB1015	2-T8 32W FLOURESCENT 120V	1
F9	COMMERCIAL BUILDING MOUNTED LUMINAIRE - METAL HALIDE	LITHONIA LIGHTING TWR1C 150M TB LP1	1-150W CLEAR ED17 METAL HALIDE	0
F10	WALL MOUNTED LUMINAIRE COMPACT FLOURESCENT	LITHONIA LIGHTING TWAC 26DTT LP1	1-26W TRIPLE TUBE COMPACT FLOURESC.	3
F11	FLOODLIGHT METAL HALIDE	LITHONIA LIGHTING TFM 150M RB TB SCWA FTS LP1	1-150W CLEAR BT28 METAL HALIDE	4
F12	RECESSED INCANDESCENT WITH BAFFLED DOWNLIGHT	LITHONIA LIGHTING L7X 7B2TOR	1-65BR30 FLOOD	5
EM	EMERGENCY EGRESS LIGHT W/ 90 MIN. BATTERY BACKUP	EELP LIGHTING ELM2	2-5.4W HALOGEN	7
EX	WALL MOUNTED LED EXIT SIGN	EELP LIGHTING XE2 R WE EM	LED	2
EX1	WALL MOUNTED LED EXIT SIGN W/ REMOTE HEAD	EELP LIGHTING XE2 R WE EM RC RHW WP1 GV 7.2W	LED 7.2W REMOTE HEAD	4

NOTES:  
1. CONNECT ALL EMERGENCY / EXIT LIGHT FIXTURES TO NEAREST CONSTANT POWER SOURCE.

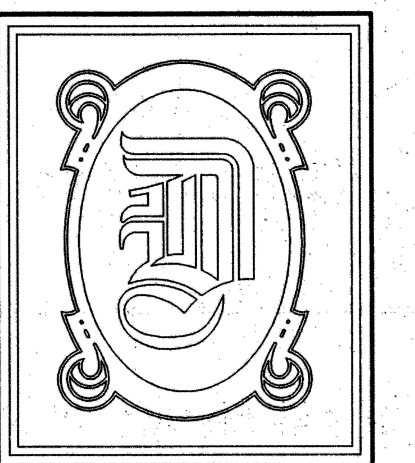
CLECO Power LLC - Electrical Load Summary			
Project Name:	BROCK BEAUTY, INC.		
Project Address:	OAK HARBOR BLVD		
City / Town:	SLIDELL, LOUISIANA		
Intended Use:	RESTAURANT		
Requested Service:	120/208 Volts	3 $\phi$	4 Wires
Service Entrance Size:	225	Amps	
HVAC Tonnage:	20	Tons	
Largest Motor:	N/A	HP	(Note: Motors above 20 hp may require reduced Voltage starting and are never recommended for use with 120/240V, 3 $\phi$ , 4W services.)
Total Building Square Footage:	6,000	Square Feet	
Individual Unit Square Footage:	N/A	Square Feet (Multiple Occupancy)	
Individual Unit Designation:	N/A	(Multiple Occupancy)	

LOAD SOURCE	1 $\phi$ - kW	3 $\phi$ - kW	REMARKS
Building Lighting	-	8.1	
Air Conditioning	-	17.5	
Heating	-	29.2	
Water Heater (elec)	-	4.4	
Cooling Equipment	-	-	
Refrigeration	-	0.8	
Receptacles	-	17.6	
Total connected load	-	85.5	

PANEL: PNL-1		VOLTAGE: 120/208V, 225A 3 $\phi$ , 4W					
LOCATION: ROOM #107		ENCLOSURE: RECESSED W/ EQUIPMENT GND BAR					
FEEDER SOURCE: CLECO		SQUARE D TYPE GO LOAD CENTER, 22000 AIC					
		W/ MAIN BREAKER					
QTY	THIN WIRE	LOAD DESCRIPTION	LOAD	QTY	THIN WIRE	LOAD DESCRIPTION	LOAD
1		AC #1 COMPRESSOR UNIT 5 TON	2430	2		ACU #1 5 TON 10 MW ELECTRIC HEAT	2430
3	10	AC #2 COMPRESSOR UNIT 5 TON	2430	35	6	ACU #2 5 TON 10 MW ELECTRIC HEAT	2430
7		AC #3 COMPRESSOR UNIT 5 TON	2430	35	10	ACU #3 5 TON 10 MW ELECTRIC HEAT	2430
11		AC #4 COMPRESSOR UNIT 5 TON	2430	35	12	ACU #4 5 TON 10 MW ELECTRIC HEAT	2430
15		AC #5 COMPRESSOR UNIT 5 TON	2430	35	14	ACU #5 5 TON 10 MW ELECTRIC HEAT	2430
19		AC #6 COMPRESSOR UNIT 5 TON	2430	35	20	ACU #6 5 TON 10 MW ELECTRIC HEAT	2430
21		AC #7 COMPRESSOR UNIT 5 TON	2430	35	22	ACU #7 5 TON 10 MW ELECTRIC HEAT	2430
23		ACU #8 5 TON 10 MW ELECTRIC HEAT	2430		24		
25		REFRIGERATOR	2800	2	26	50 GAL. WATER HEATER	2800
27	30	PNL-2	11000	2	28		
29		TOTAL CONNECTED LOAD (KW)	10000		30	BLANK	
		AB=31162 DB=20762 CB=25562				GROUND BUS GROUND WIRE (6)	

PANEL: PNL-2		VOLTAGE: 120/208V, 200A 3 $\phi$ , 4W					
LOCATION: ROOM #107		ENCLOSURE: RECESSED W/ EQUIPMENT GND BAR					
FEEDER SOURCE: PNL-1		SQUARE D TYPE GO LOAD CENTER, 22000 AIC					
		W/ MAIN BREAKER					
QTY	THIN WIRE	LOAD DESCRIPTION	LOAD	QTY	THIN WIRE	LOAD DESCRIPTION	LOAD
1	12	OUTLETS	1600	2	12	OUTLETS	1600
3	12	OUTLETS	1600	1	20	OUTLETS	1600
5	12	TOILET RM OUTLET	1000	-	-	BLANK	-
7	12	OUTLETS	1600	1	20	OUTLETS	1600
9	12	OUTLETS	1600	1	20	OUTLETS	1600
11	12	OUTLETS	1600	1	20	MICROWAVE	1600
13	12	REFRIGERATOR	800	-	-	BLANK	-
15	12	TOILET RM OUTLET	1000	1	20	LIGHTING	1500
17	12	LIGHTING	1500	1	20	LIGHTING	1500
19	12	LIGHTING	1500	1	20	LIGHTING	1500
21	12	EXTERIOR LIGHTING (PHOTOCELL)	600	1	20	ELEV PIT LIGHT, OUTLET, AND MECH	1600
23	12	SPARE	1600	1	20	SPARE	1600
25	12	SPARE	1600	1	20	SPARE	1600
27	12	SPARE	1600	1	20	SPARE	1600
29	-	BLANK	-	-	-	BLANK	-
		TOTAL CONNECTED LOAD (KW)				GROUND BUS GROUND WIRE (6)	
		AB=15400 DB=11000 CB=10000					



**DAMMON ENGINEERING, INC.**

CHIEF ENGINEER  
EMMETT DAMMON, P.E.

CHIEF ARCHITECT  
ROBERT WILTSE

554 OLD SPANISH TRAIL  
SLIDELL, LA. 70458  
OFFICE: 985-649-5832  
FAX: 985-641-5950

WEBSITE:  
WWW.DAMMONENGINEERING.COM

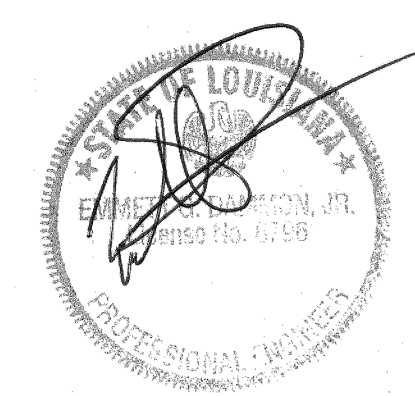
EMAIL:  
DAMMONENG@BELLSOUTH.NET

- ARCHITECTURE
- ENGINEERING
- STUDIES
- PLANNING
- INVESTIGATION
- EXPERT WITNESS

BROCK BEAUTY INC.

K.B. KAUFMANN  
OAK HARBOR BLVD.  
LOT 3  
SLIDELL, LA  
70458

LIGHTING PLAN



REV:

SCALE: AS NOTED

JOB#: 2125

DATE: 12-21-11

SHEET 17

E-2

OF 18