

Revisions	#	DATE	COMMENTS
1	08/01/11	ISSUED FOR BIDDING	
2	04/03/12	OWNER COMMENTS	
3	07/03/12	REVISED	

© 2012, by Humphreys & Partners
All Rights Reserved
The architectural works depicted herein are the property of Humphreys & Partners, a professional architectural firm. No permission is granted to reproduce or transmit these works in any form or by any means, electronic, mechanical, photocopying, recording, or by any information storage and retrieval system, without the prior written permission of Humphreys & Partners. No part of these architectural works may be reproduced or transmitted in any form or by any means, without the prior written permission of Humphreys & Partners. Humphreys & Partners, its employees, agents, and subcontractors shall not be held liable for any errors or omissions in these architectural works. Humphreys & Partners, its employees, agents, and subcontractors shall not be held liable for any damages, including consequential damages, arising out of the use of these architectural works. Humphreys & Partners, its employees, agents, and subcontractors shall not be held liable for any claims, damages, or liabilities, including consequential damages, arising out of the use of these architectural works.

NOTES

1. LOW SLOPE ROOF SLOPES ARE TO BE MIN. 1/2" PER FOOT.
2. PARAPET DIMENSIONS ARE FROM TOP OF BECK TO TOP OF FINISH FLOOR.
3. ALL DOWNSPUTS ON EXTERIOR WALLS WILL BE COLLECTED AND LED TO DOWN SPILLER.
4. 2" RIGID INSULATION SHALL BE INSTALLED ON ROOF DECK. RIGID INSULATION SHALL BE CONTIGUOUS AT THE JOINTS.
5. REFER TO STRUCTURAL DRAWINGS FOR ROOF FRAMING PLANS AND SPECS.
6. 24" HIGHER THAN H.E.L. HEIGHTS ARE FOR PERSON INTENT ONLY. TRUSS MANUFACTURER TO VERIFY FABRICATION DRAWINGS FOR EXACT FLATE AND H.E.L. HEIGHTS.
7. REFER TO STRUCTURAL DRAWING AND TRUSS MECHANICAL EQUIPMENT.
8. PROVIDE WALKWAY DOORS TO AND AROUND ALL ROOFTOP MECHANICAL EQUIPMENT.
9. ENSURE 12" MIN. CLEARANCE TO ADJACENT EQUIPMENT WALLS OR CURBS AT MECHANICAL ROOFTOP EQUIPMENT AND PENETRATIONS INSTALLED BY OTHER TRADES.
10. RISK/FIT/OP NOT REQUIRED PER SECTION 717.4.2 EXCEPTION 2.
11. PROVIDE 4.5" MIN. CLEAR HEADROOM AT ACCESS OPENING PER SECTION 1093.2, IRC 2008. THE HEADROOM OVER THE ACCESS OPENING SHALL BE MAINTAINED AT THE ROOF PARTNERS.

SYMBOL LEGEND - ROOF PLANS

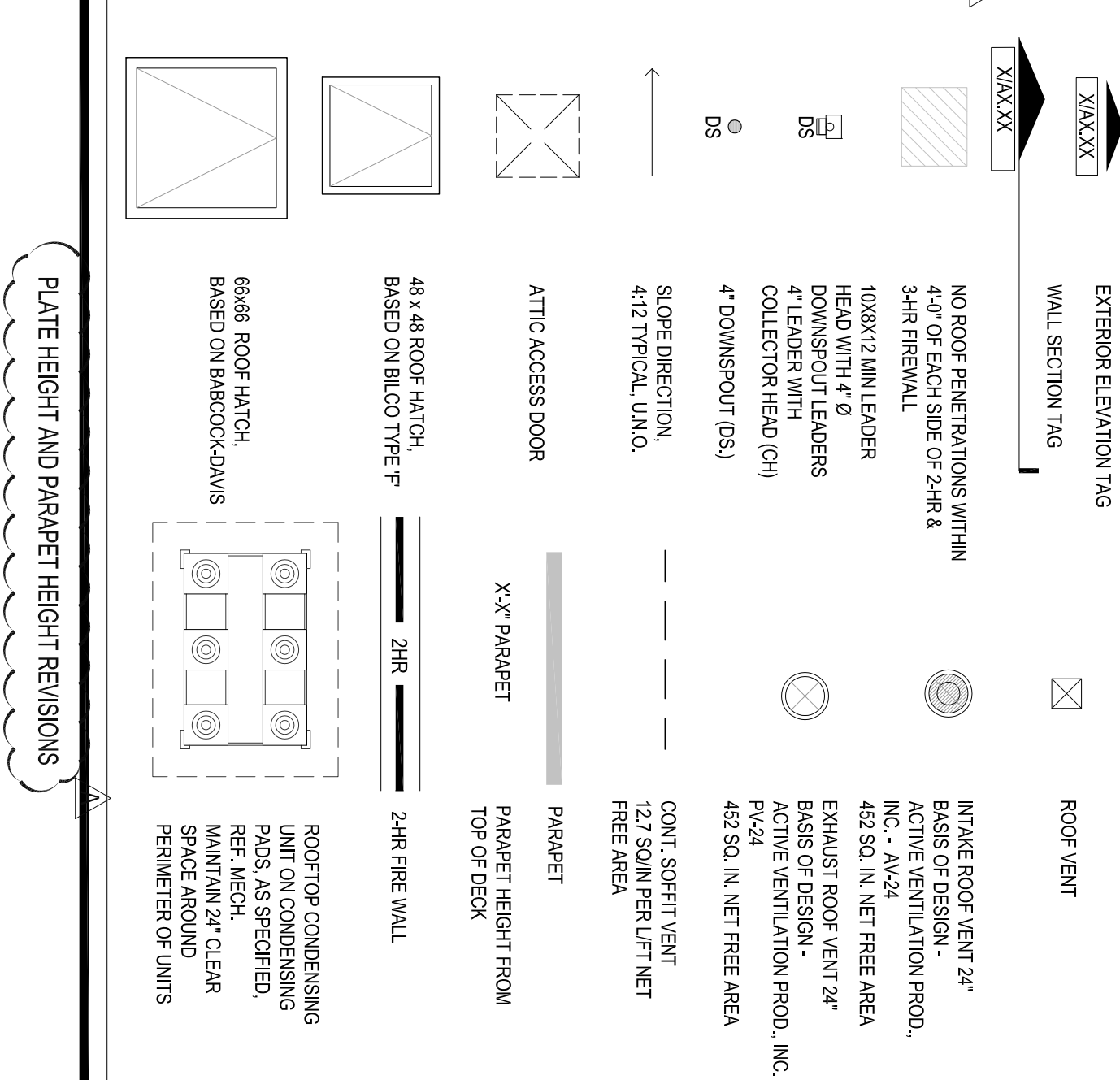
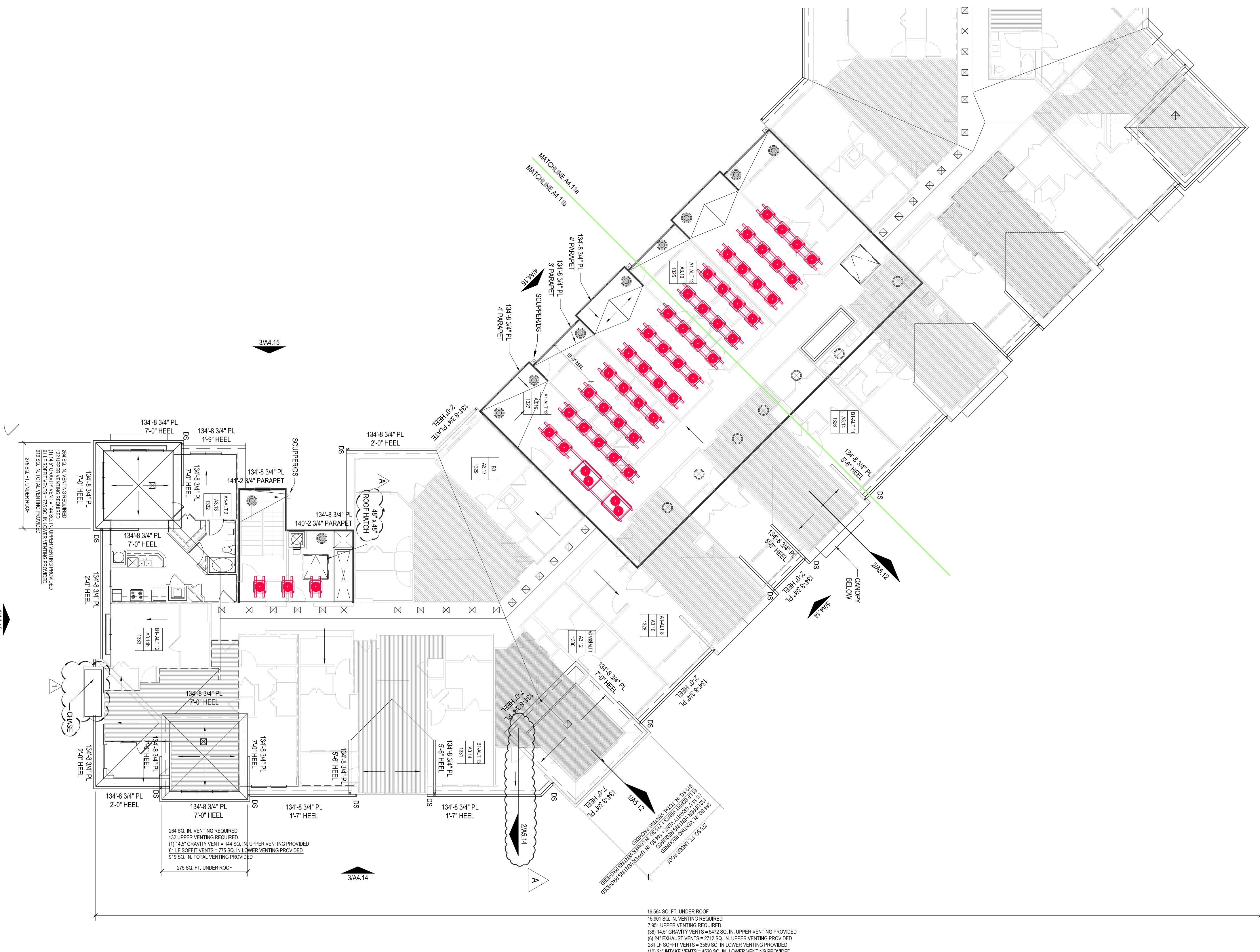


PLATE HEIGHT AND PARAPET HEIGHT REVISIONS

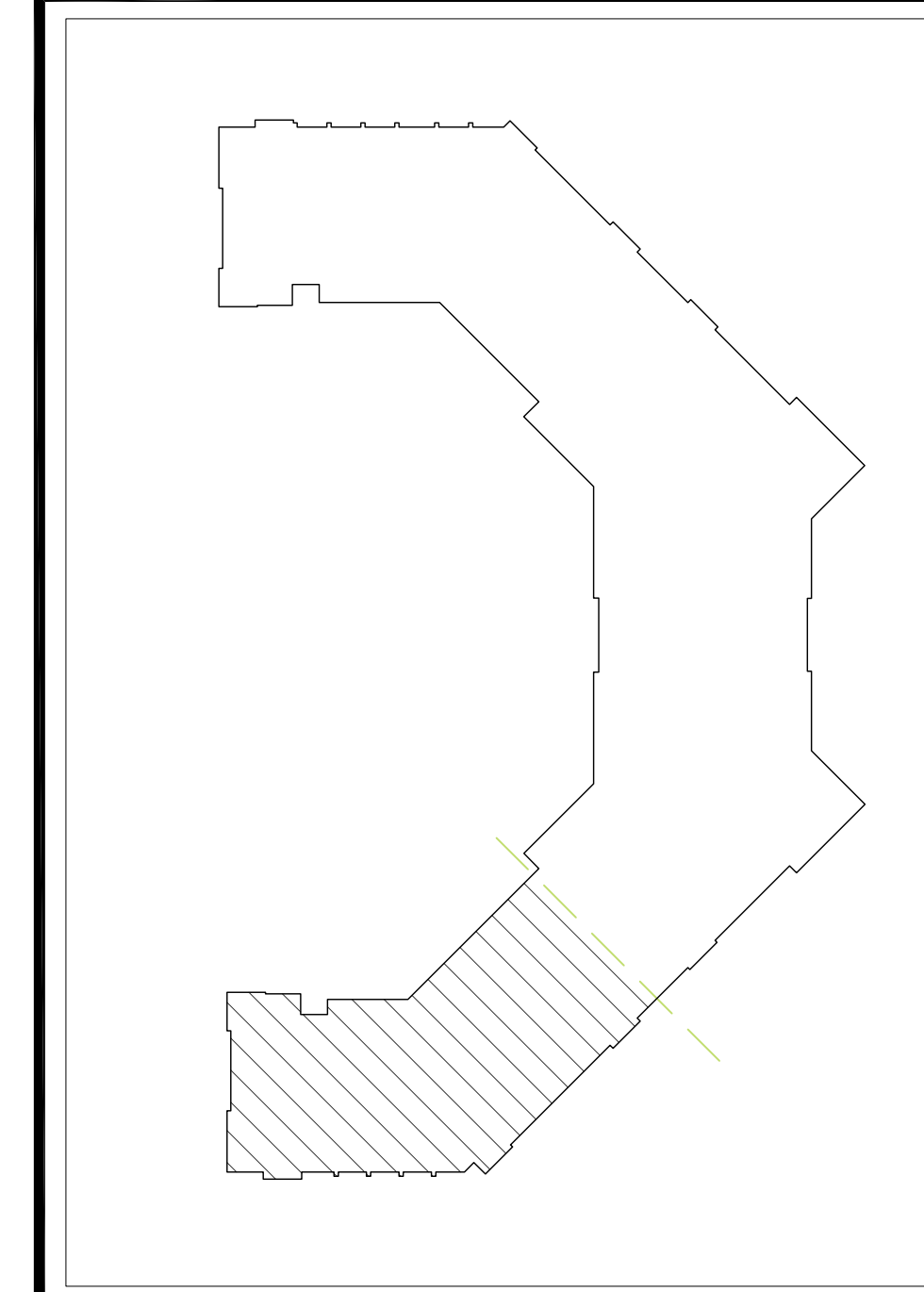
HUD CLOSING/CONSTRUCTION SET

A4.13-b

10025



BUILDING 1 - KEY PLAN



HUMPHREYS & PARTNERS
ARCHITECTS, L.L.C.
603 JULIA STREET • NEW ORLEANS, LOUISIANA 70130
(504) 717-4700 • (504) 558-7762 FAX
DALLAS • ORLANDO • NEW ORLEANS
IRVINE • PHOENIX
www.humphreys.com



THE HIGH GROVE APARTMENTS
BATON ROUGE, LOUISIANA
High Grove Baton Rouge, LLC.



SHEET CONTENTS
BLDG 1 - ROOF
PLAN NORTH
SHEET NO.
A4.13-b