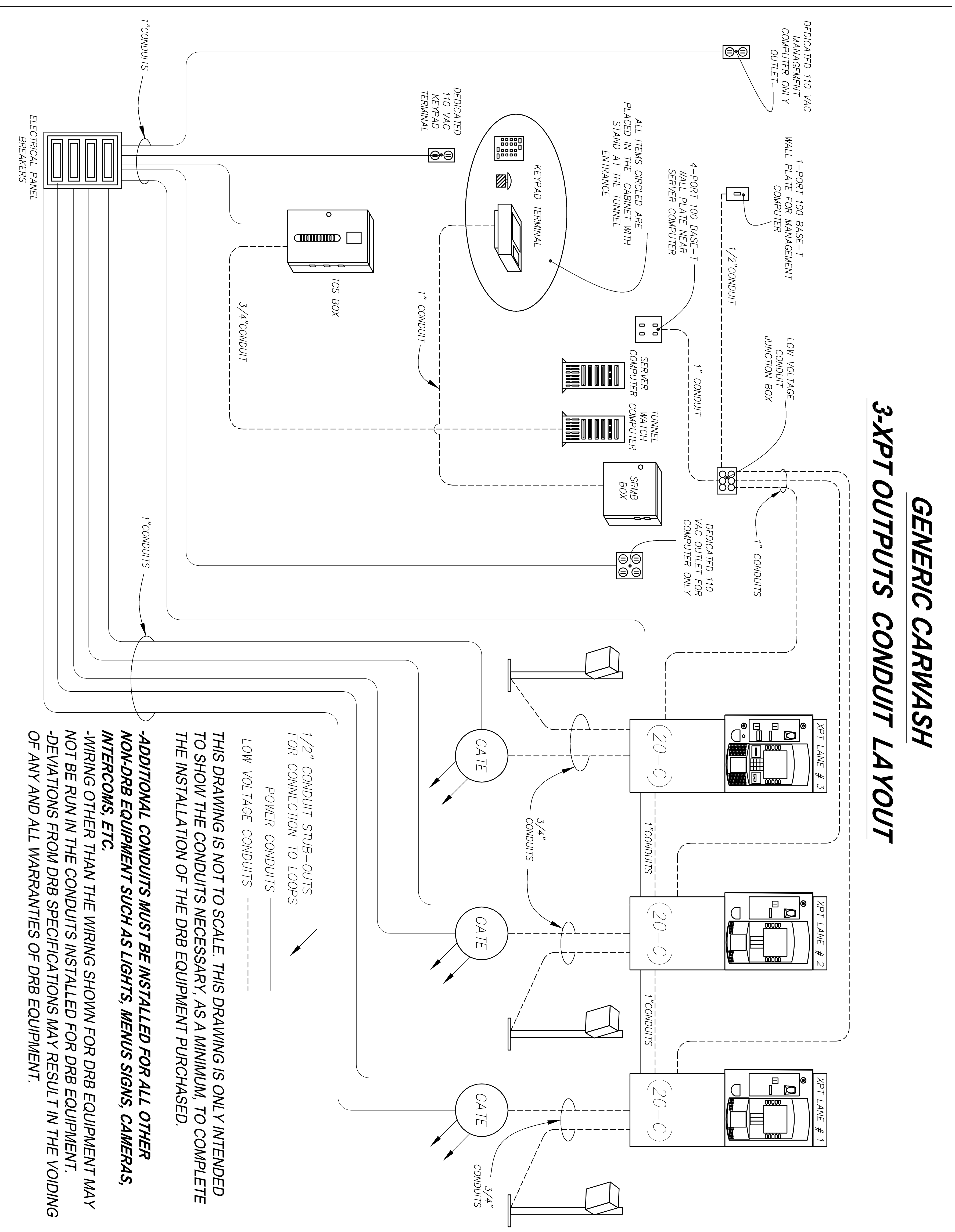


GENERIC CARWASH 3-XPT OUTPUTS CONDUIT LAYOUT



1/2" CONDUIT STUB-OUTS FOR CONNECTION TO LOOPS
 POWER CONDUITS
 LOW VOLTAGE CONDUITS

THIS DRAWING IS NOT TO SCALE. THIS DRAWING IS ONLY INTENDED TO SHOW THE CONDUITS NECESSARY, AS A MINIMUM, TO COMPLETE THE INSTALLATION OF THE DRB EQUIPMENT PURCHASED.

-ADDITIONAL CONDUITS MUST BE INSTALLED FOR ALL OTHER NON-DRB EQUIPMENT SUCH AS LIGHTS, MENUS SIGNS, CAMERAS, INTERCOMS, ETC.

-WIRING OTHER THAN THE WIRING SHOWN FOR DRB EQUIPMENT MAY NOT BE RUN IN THE CONDUITS INSTALLED FOR DRB EQUIPMENT.

-DEVIATIONS FROM DRB SPECIFICATIONS MAY RESULT IN THE VOIDING OF ANY AND ALL WARRANTIES OF DRB EQUIPMENT.

DISCLAIMER
 ALTHOUGH BUILDING CODES HAVE BEEN CONSIDERED IN DEVELOPING THIS DRAWING, VERIFICATION OF THE SPECIFIC CONDITIONS AND COMPLIANCE WITH FEDERAL, STATE AND LOCAL BUILDING CODES IS THE EXCLUSIVE RESPONSIBILITY OF THE CUSTOMER AND/OR ARCHITECT AND ENGINEER.
 THESE DRAWINGS REFLECT REQUIREMENTS FOR SONNY'S FURNISHED EQUIPMENT ONLY UNLESS OTHERWISE NOTED. PLEASE REFER TO OTHER MANUFACTURERS, IF ANY, FOR THEIR EQUIPMENT REQUIREMENTS.

CONFIDENTIAL WARNING:
 THIS SHEET CONTAINS AND CONSTITUTES CONFIDENTIAL INFORMATION, IMAGES AND TRADE SECRETS OF SONNY'S ENTERPRISES INC.. ANY UNAUTHORIZED USE OR DISCLOSURE OF ANY OR PORTION THEREOF, IS STRICTLY PROHIBITED. THIS WORK IS THE EXCLUSIVE PROPERTY OF SONNY'S ENTERPRISES INC. ALL RIGHTS RESERVED.

CWP-06370-B11-RAINFOREST-HATT.
 SCALE: N.T.S. LOCATION: LA

Sheet **G.4** Rev. **11**