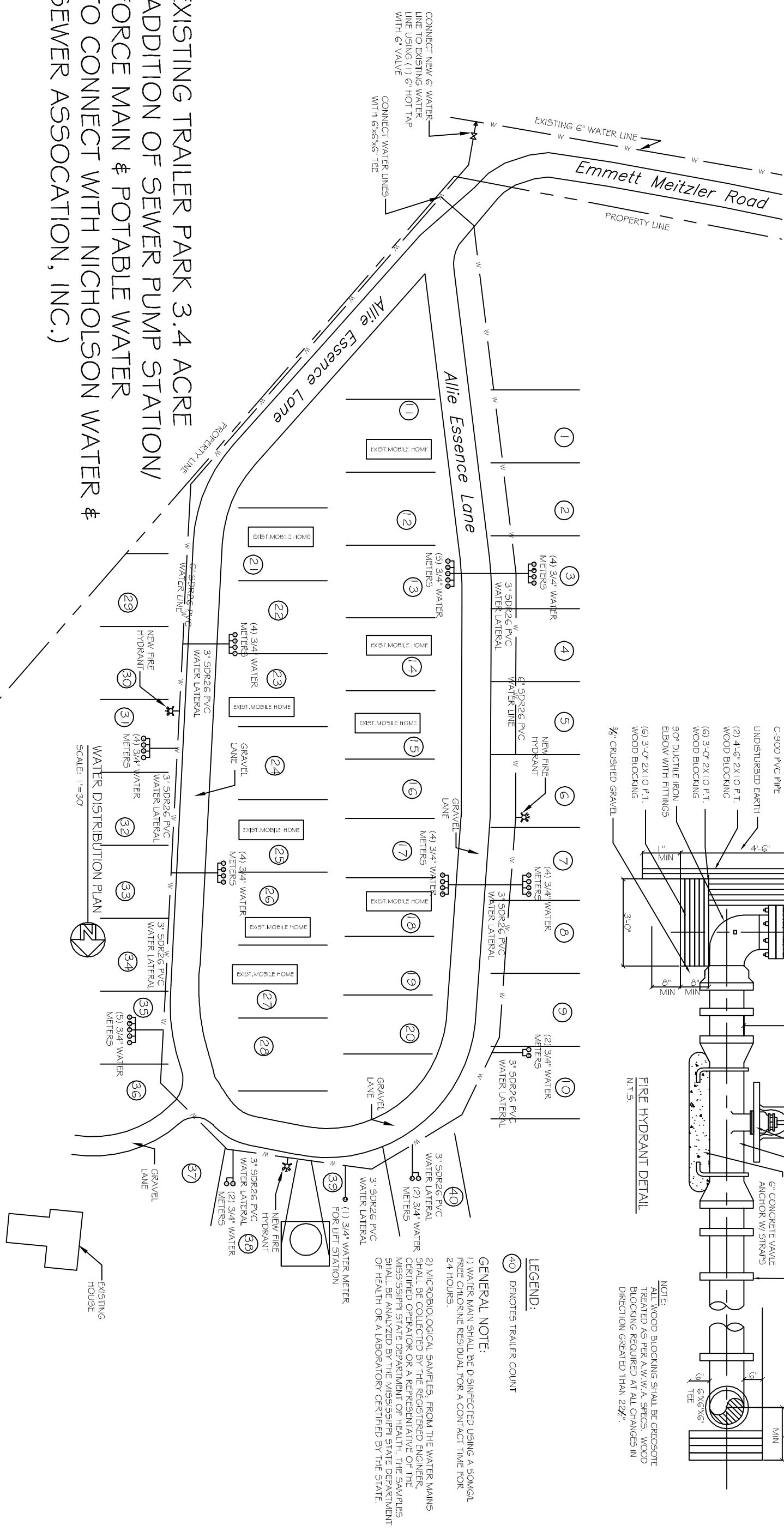
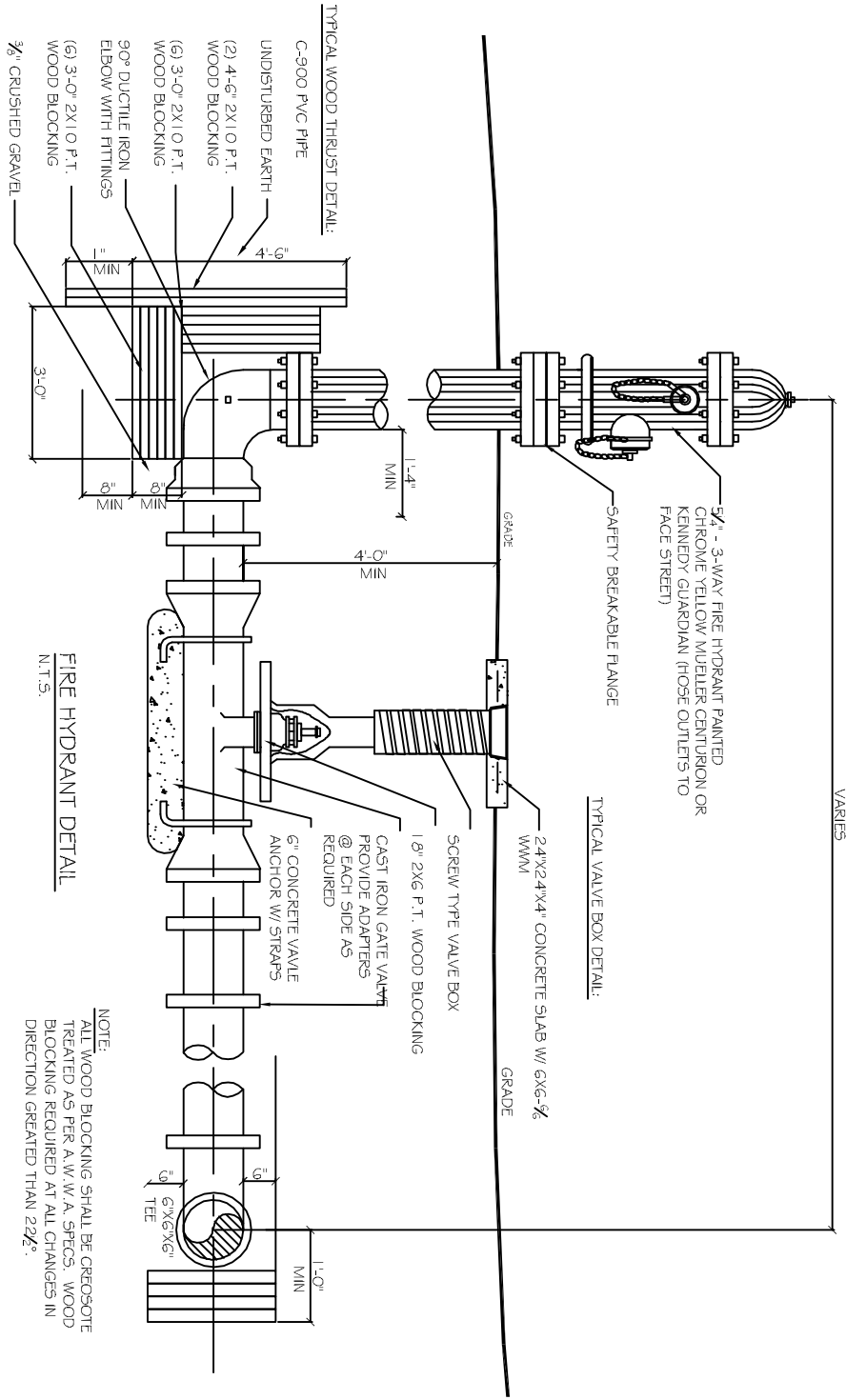


NOTE: A MINIMUM 10' HORIZ. AND 18\"/>

PIPE MAIN BEDDING DETAIL FOR SEWER AND WATER
SCALE: N.T.S.



LEGEND:
④0 DENOTES TRAILER COUNT

GENERAL NOTE:
1) WATER MAIN SHALL BE DISINFECTED USING A SOMGL FREE CHLORINE RESIDUAL FOR A CONTACT TIME FOR 24 HOURS.
2) MICROBIOLOGICAL SAMPLES, FROM THE WATER MAINS SHALL BE COLLECTED BY THE REGISTERED ENGINEER, CERTIFIED OPERATOR OR A REPRESENTATIVE OF THE MISSISSIPPI STATE DEPARTMENT OF HEALTH. THE SAMPLES SHALL BE ANALYZED BY THE MISSISSIPPI STATE DEPARTMENT OF HEALTH OR A LABORATORY CERTIFIED BY THE STATE.

EXISTING TRAILER PARK 3.4 ACRE
(ADDITION OF SEWER PUMP STATION/
FORCE MAIN & POTABLE WATER
TO CONNECT WITH NICHOLSON WATER &
SEWER ASSOCIATION, INC.)

NO.	DESCRIPTION	DATE

DREAMLAND MOBILE HOME PARK
ALLIE ESSENCE LANE
NICHOLSON, MISSISSIPPI

JOB NO: 2182 DATE: 05-19-2014
DRAWN BY: CKD CHECKED BY: BM



DAMMON ENGINEERING, INC.
Architects & Engineers

CHIEF ENGINEER, BRIAN MITCH, P.E.
CHIEF ARCHITECT, KEVIN KINCHEN
554 OLD SPANISH TRAIL
SLIDELL, LA 70458
dammonengineering.com
dammoneng@bellsouth.net
PHONE: 985-644-5832
FAX: 985-641-5480

WATER DISTRIBUTION PLAN

SHEET NO: 04 OF 04

C3