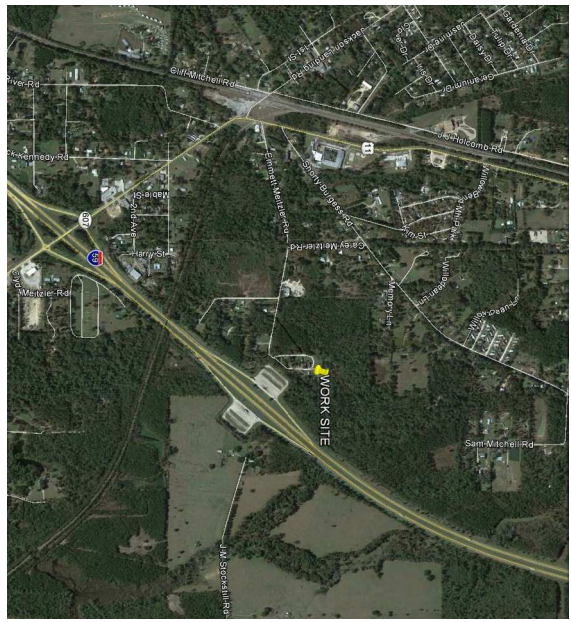


OVERALL SITE PLAN
SCALE: 1"=100'

EXISTING TRAILER PARK 3.4 ACRE
(ADDITION OF SEWER PUMP STATION/
FORCE MAIN & POTABLE WATER
TO CONNECT WITH NICHOLSON WATER &
SEWER ASSOCIATION, INC.)



VICINITY MAP
N.T.S.

INDEX OF DRAWINGS			
SHT#	DWG#	DRAWING NAME	REVISED
1	C-1	OVERALL SITE PLAN	
2	C-2	SEWER DISTRIBUTION PLAN	
3	C-3	WATER DISTRIBUTION PLAN	

REVISIONS		
#	DESCRIPTION	DATE

**DREAMLAND
MOBILE HOME PARK**
ALLIE ESSENCE LANE
NICHOLSON, MISSISSIPPI

JOB NO: 2182 DATE: 05-19-2014

DRAWN BY: CKD CHECKED BY: BM

The above drawings and specifications, designs and arrangements, represent and thereby constitute the entire contract between the client and the engineer. No verbal or written agreement, oral or written, shall be binding on the engineer unless it is in writing and signed by both parties. The engineer shall not be held responsible for any errors or omissions in the drawings or specifications, or for any consequences arising therefrom, whether or not such errors or omissions are caused in whole or in part by the negligence of the client. The engineer shall not be held responsible for any consequences arising therefrom, whether or not such errors or omissions are caused in whole or in part by the negligence of the client.

**DAMMON
ENGINEERING, INC.**
Architects & Engineers

CHIEF ENGINEER: BRIAN MISTICH, P.E.
CHIEF ARCHITECT: KEVIN KINCHEN
554 OLD SPANISH TRAIL
SLIDELL, LA 70458

dammonengineering.com
dammoneng@bellsouth.net
PHONE: 985-641-5832
FAX: 985-641-5850