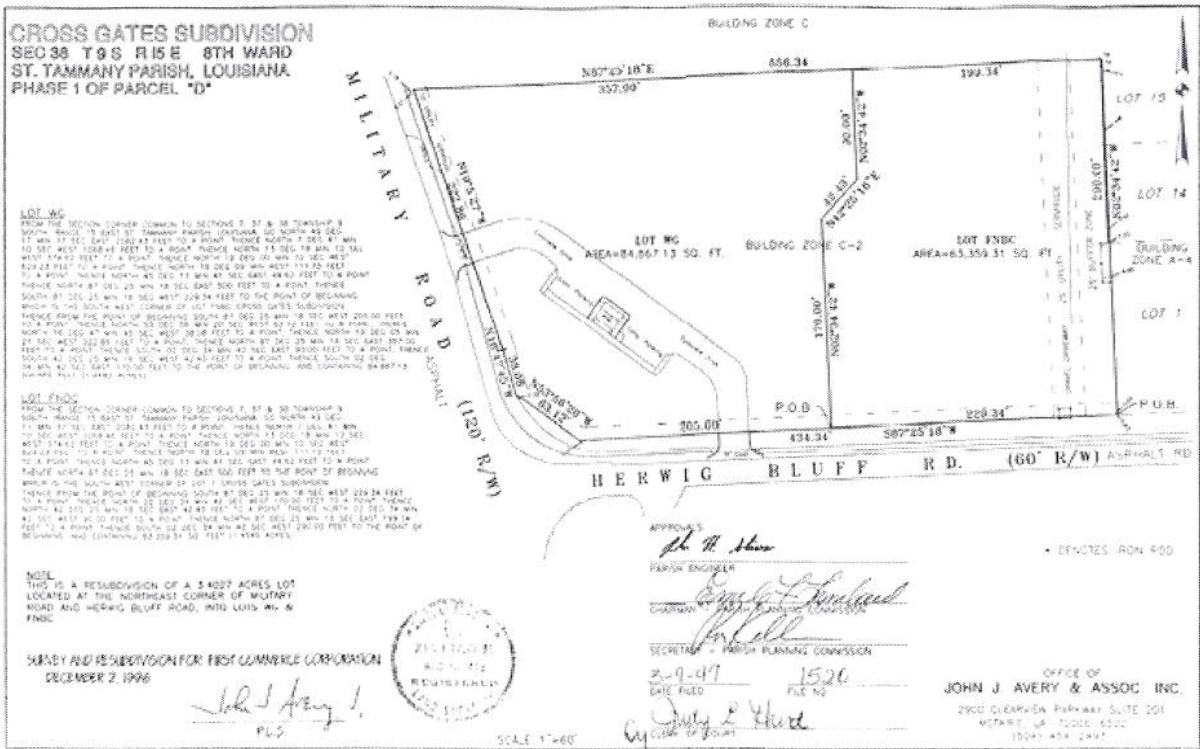


Survey



CROSS GATES SUBDIVISION
 SEC 38 T 9 S R 15 E 8TH WARD
 ST. TAMMANY PARISH, LOUISIANA
 PHASE 1 OF PARCEL "D"

LOT 13

FROM THE SECTION CORNER CORNER TO SECTIONS 7, 8, 9 & 10 TOWNSHIP 9 SOUTH RANGE 15 EAST ST. TAMMANY PARISH, LOUISIANA 20 SOUTH 43 DEG 17 MIN 17 SEC EAST 1200.00 FEET TO A POINT, THENCE NORTH 7 DEGS 47 MIN 10 SEC WEST 1028.48 FEET TO A POINT, THENCE NORTH 73 DEG 18 MIN 10 SEC WEST 374.23 FEET TO A POINT, THENCE NORTH 18 DEG 05 MIN 50 SEC WEST TO A POINT, THENCE NORTH 45 DEG 13 MIN 47 SEC EAST 48.80 FEET TO A POINT, THENCE NORTH 23 MIN 18 SEC EAST 500 FEET TO A POINT, THENCE SOUTH 81 DEG 25 MIN 18 SEC WEST 228.34 FEET TO THE POINT OF BEGINNING, WHICH IS THE SOUTH WEST CORNER OF LOT 13 AND 14 AND 15 AND 16.

LOT 14

FROM THE SECTION CORNER CORNER TO SECTIONS 7, 8, 9 & 10 TOWNSHIP 9 SOUTH RANGE 15 EAST ST. TAMMANY PARISH, LOUISIANA 20 SOUTH 43 DEG 17 MIN 17 SEC EAST 1200.00 FEET TO A POINT, THENCE NORTH 7 DEGS 47 MIN 10 SEC WEST 1028.48 FEET TO A POINT, THENCE NORTH 73 DEG 18 MIN 10 SEC WEST 374.23 FEET TO A POINT, THENCE NORTH 18 DEG 05 MIN 50 SEC WEST TO A POINT, THENCE NORTH 45 DEG 13 MIN 47 SEC EAST 48.80 FEET TO A POINT, THENCE NORTH 23 MIN 18 SEC EAST 500 FEET TO A POINT, THENCE SOUTH 81 DEG 25 MIN 18 SEC WEST 228.34 FEET TO THE POINT OF BEGINNING, WHICH IS THE SOUTH WEST CORNER OF LOT 13 AND 14 AND 15 AND 16.

NOTE

THIS IS A RESUBDIVISION OF A 3.4027 ACRES LOT LOCATED AT THE NORTHEAST CORNER OF MILITARY ROAD AND HERWIG BLUFF ROAD, INTO LOTS 13 & 14.

MADE AND RESUBDIVISION FOR FIRST COMMENCE CORPORATION
 DECEMBER 2, 1996



APPROVES
John J. Avery
 PARISH ENGINEER
 COUNTY ENGINEER
 SECRETARY - PARISH PLANNING COMMISSION
 DATE FILED 2-9-97
 FILE NO. 1526
 BY *John J. Avery*
 CLERK OF COURT

OFFICE OF
JOHN J. AVERY & ASSOC. INC.
 2900 CLEARVIEW PARKWAY, SUITE 201
 METairie, LA 70002-6500
 (504) 885-2941

John J. Avery
 PLS

SCALE 1"=60'

ACE 9276@BELLSOUTH.NET
cell 985-768-8875