

1" = 50'

NOTES:

1. THE LOCATION OF UTILITIES ARE APPROXIMATE ONLY, BASED ON VISUAL INSPECTION. ALL UTILITIES SHALL BE LOCATED AND CONFIRMED PRIOR TO ANY EXCAVATION. NOTIFY MISSISSIPPI ONE CALL.
2. THE CONTROL POINTS SHOWN ARE DERIVED FROM AN ASSUMED LOCAL COORDINATE SYSTEM AND NOT TIED TO ANY OTHER COORDINATE SYSTEM. ELEVATIONS ARE TIED TO THE NAVD 88 DATUM.
3. THIS PLAT IS FOR TOPOGRAPHIC PURPOSES ONLY. THIS IS NOT A CERTIFIED BOUNDARY SURVEY.
4. RECORD SEARCH FOR EASEMENTS, RIGHTS-OF-WAY, ETC. AND TITLE OPINION NOT PERFORMED AS PART OF SURVEY.

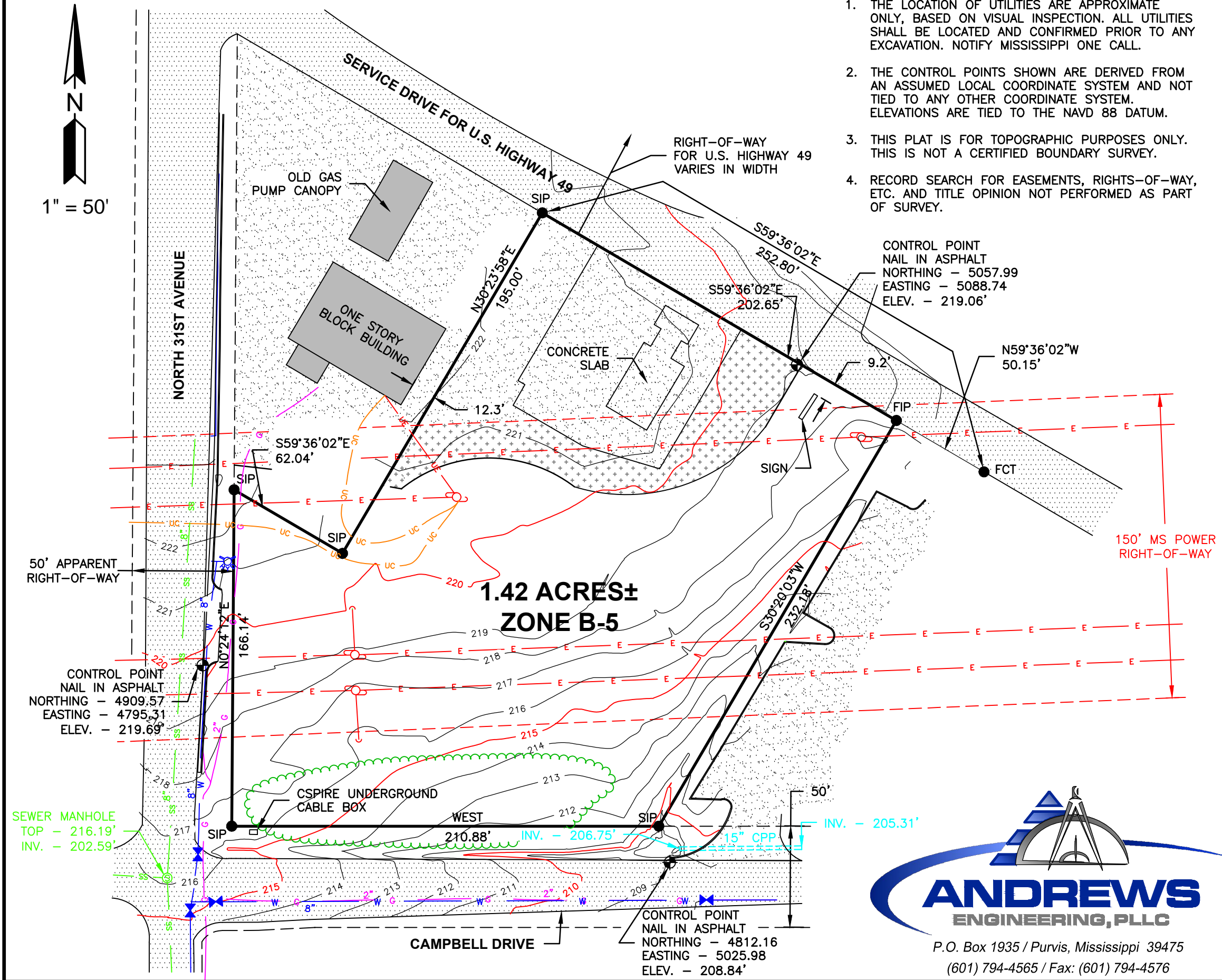
LEGEND

- CONCRETE
- ASPHALT
- OVERHEAD POWER
- UNDERGROUND POWER
- UNDERGROUND COMMUNICATION
- UNDERGROUND GAS
- WATER LINE
- SANITARY SEWER LINE
- PROPERTY LINE
- TREE LINE
- UTILITY POLE/GUY WIRE
- UTILITY POLE
- SEWER MANHOLE
- FIRE HYDRANT
- WATER VALVE
- CONTROL POINT/BENCHMARK

GRAPHIC SCALE



(IN FEET)
1 inch = 50 ft.



1.42 ACRES±
ZONE B-5

ANDREWS
ENGINEERING, PLLC

P.O. Box 1935 / Purvis, Mississippi 39475
(601) 794-4565 / Fax: (601) 794-4576

I CERTIFY THAT THE INFORMATION CONTAINED ON THIS PLAT IS TRUE AND ACCURATE TO THE BEST OF MY KNOWLEDGE AND BELIEF.

CASEY L. BENEDICT
MS PS No. 3280

Date

BEARINGS ORIENTED BY: GPS (GEODETIC NORTH)

SURVEYED BY: CLB	DRAWING SCALE: 1" = 50'
DRAWN BY: CLB	CLASS OF SURVEY: NA