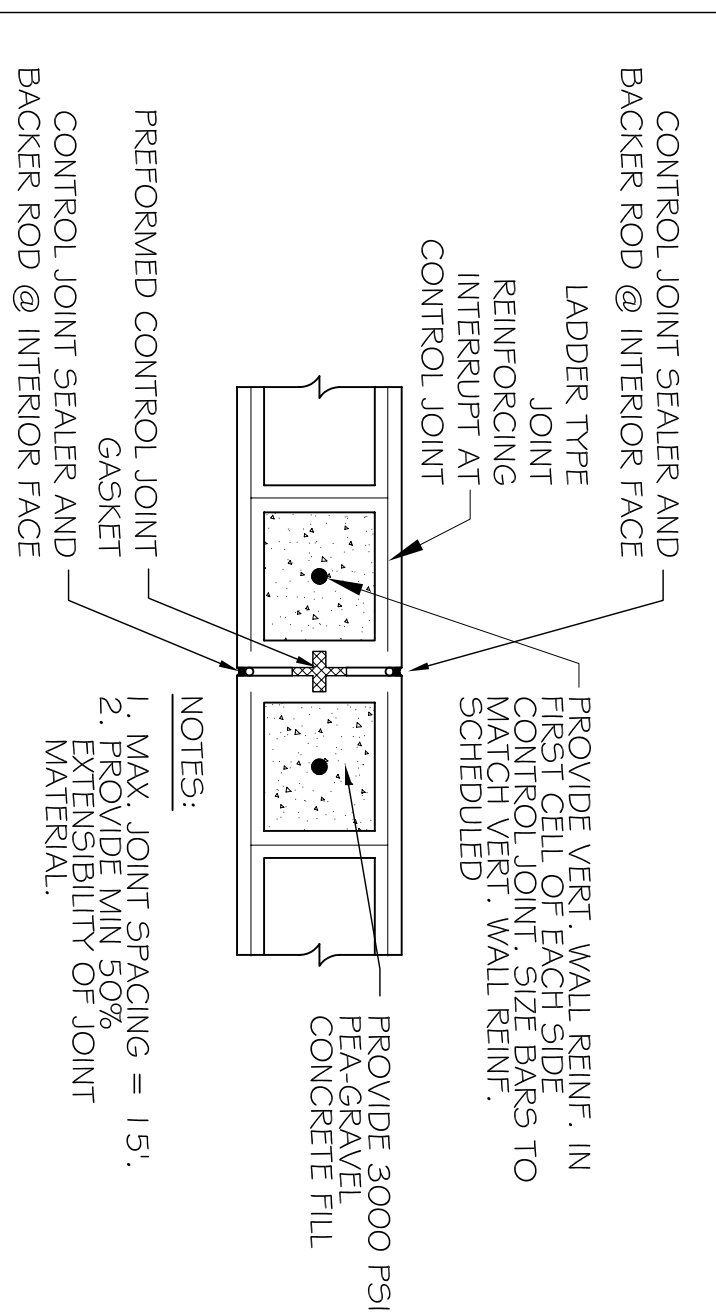
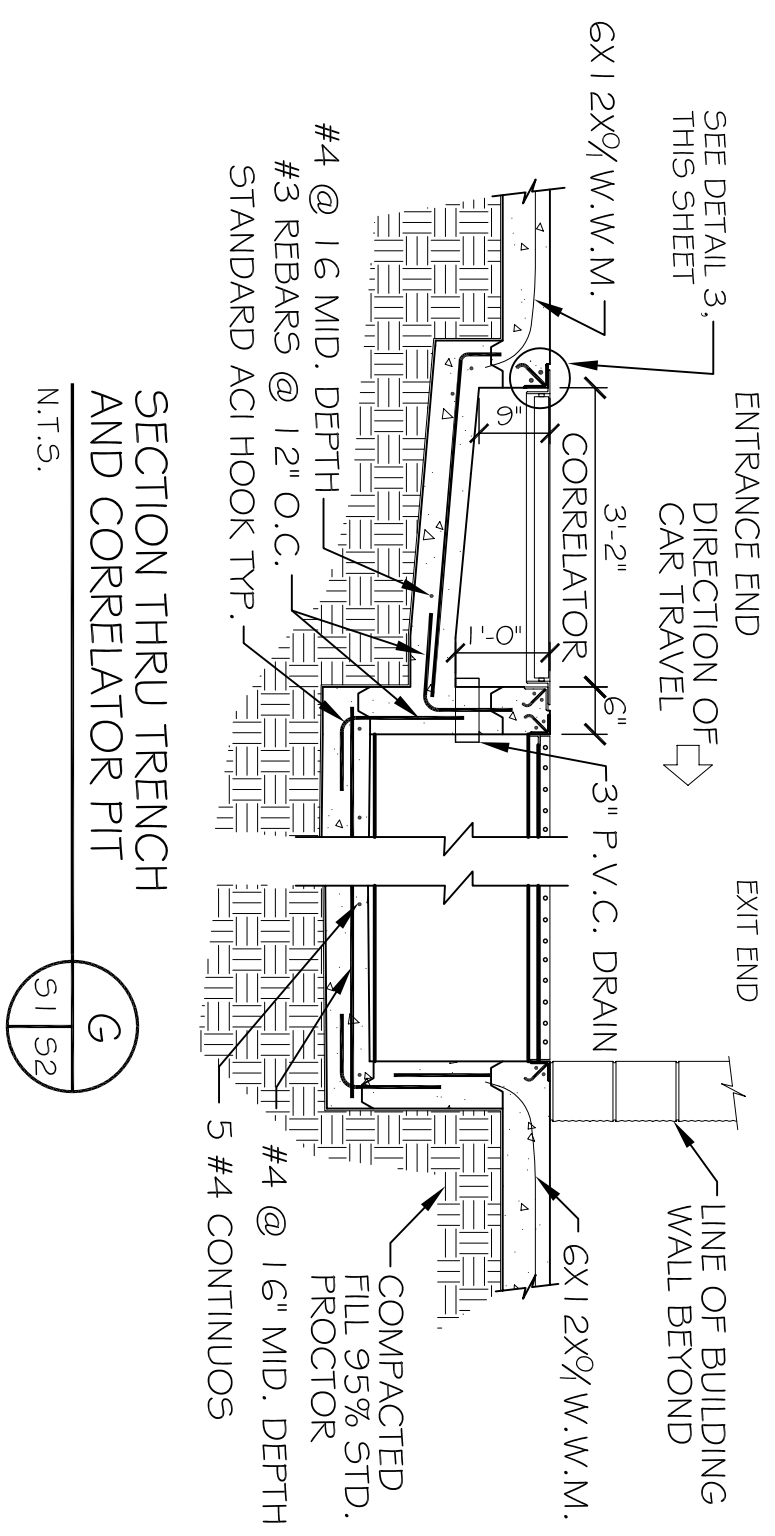
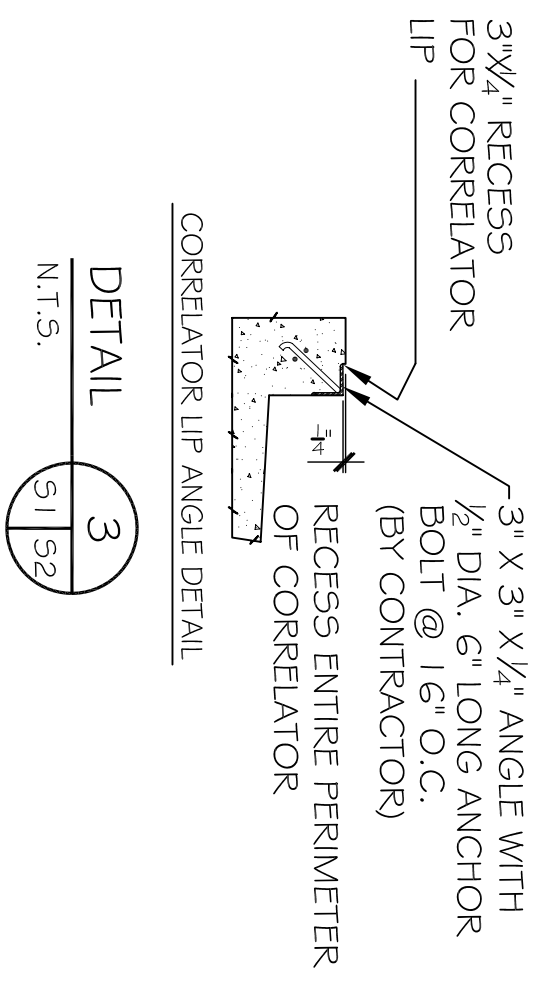
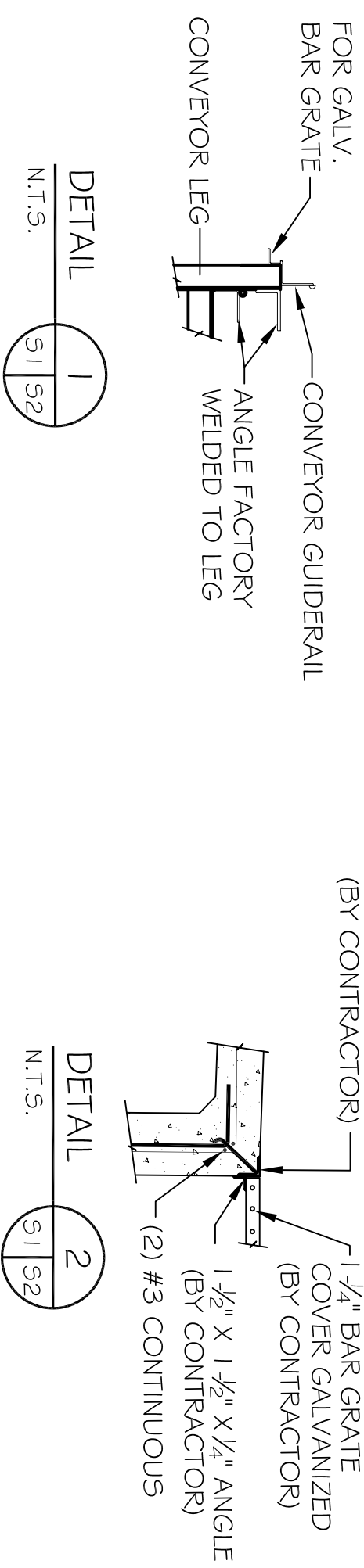
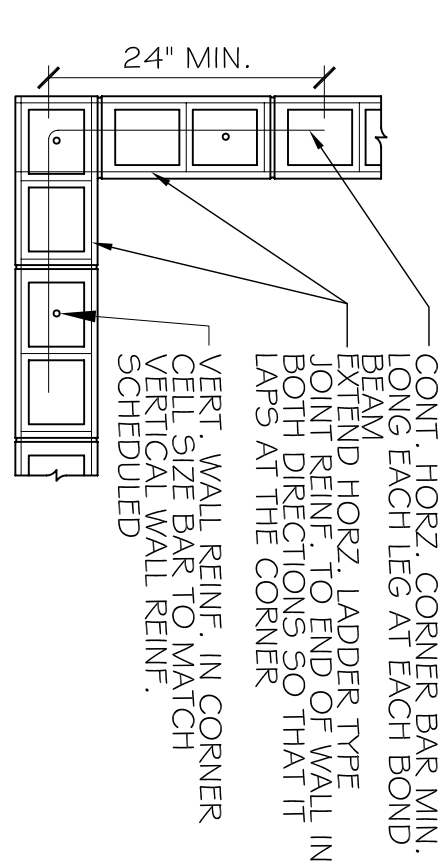


CMU LINTEL SCHEDULE			
WIDTH (W)	CLEAR SPAN	DEPTH (D)	HORIZ. REINF.
8" TYP AT ALL CMU WALLS	UP TO 3'-4"	8"	(1) #6 BOTTOM
	UP TO 6'-4"	16"	(1) #6 TAB
	UP TO 14'-0"	24"	(2) #6 TAB

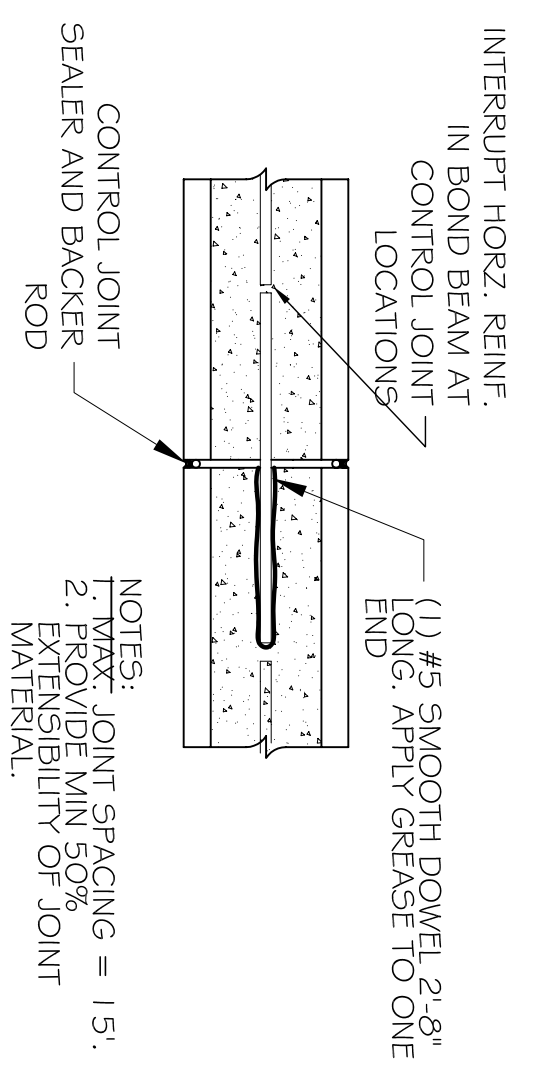
PROVIDE 3000 PSI PFA-GRAVEL CONCRETE FILL FOR ALL LINTELS.



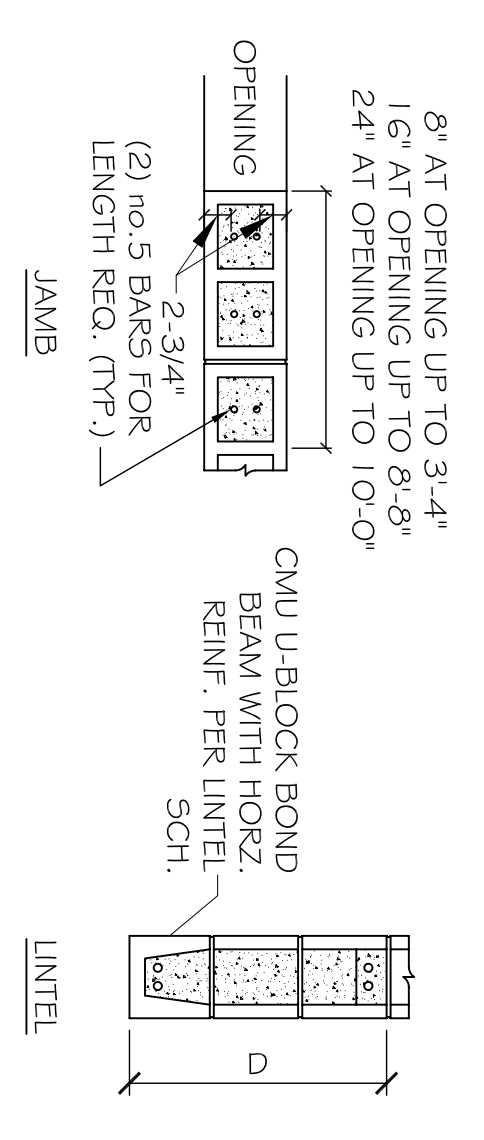
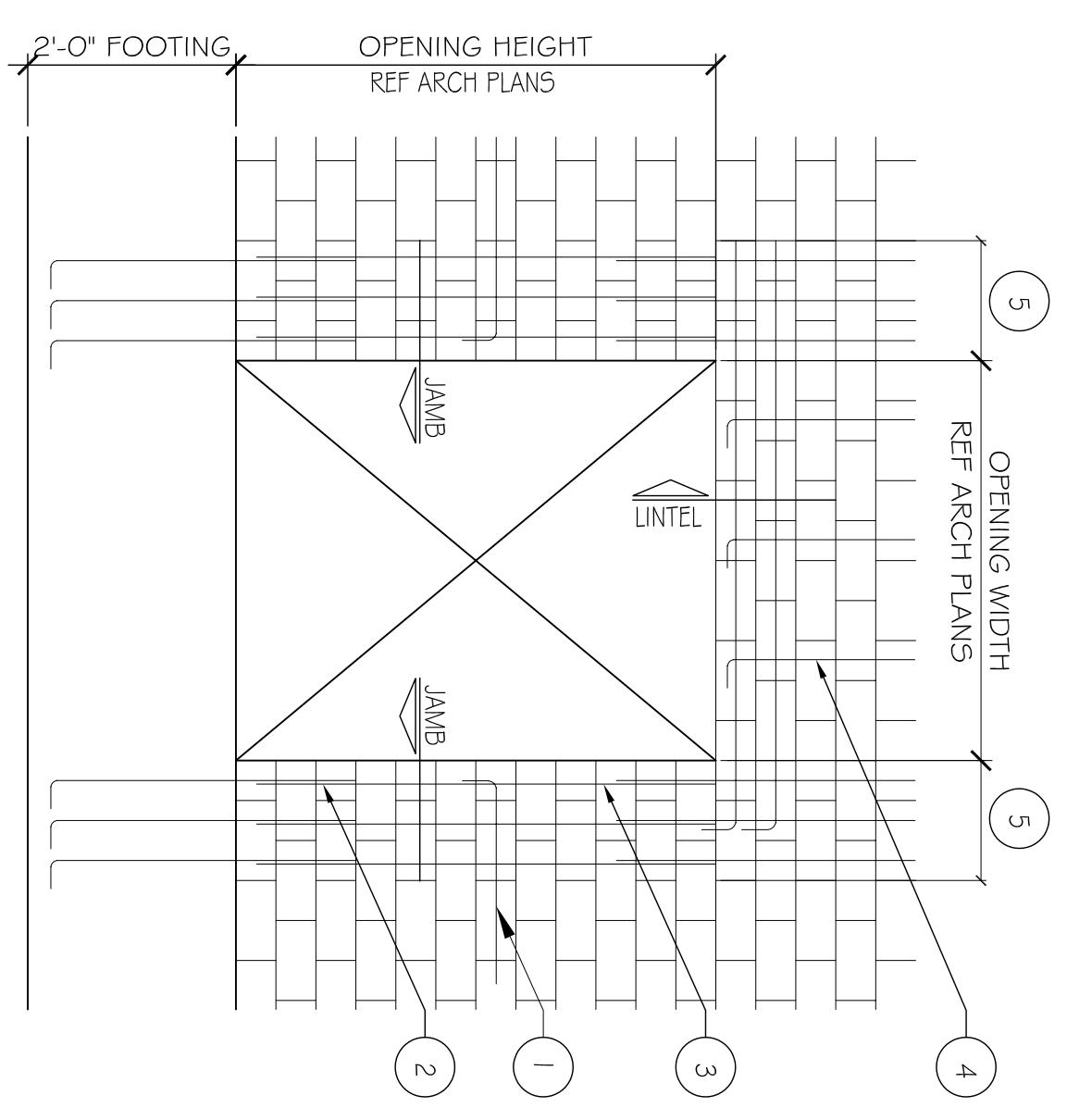
TYPICAL MASONRY CONTROL JOINT  
SCALE: N.T.S.



TYPICAL REIN. @ CORNER OF MASONRY  
SCALE: N.T.S.



CONTROL JOINT @ BOND BEAM  
SCALE: N.T.S.



NOTES: (1) WHERE HORIZ. REINFORCEMENT IS INTERRUPTED BY OPENING OR CORNER, PROVIDE STANDARD ACI HOOK WITH VERT. WALL REIN. AT END CELL.  
 (2) ALL VERT. BARS AT DOOR JAMBS TO BE FULL HEIGHT.  
 (3) CONTINUE VERT. WALL REIN. OVER OPENING. ANCHOR VERT. REIN. IN LINTEL.  
 (4) EXTEND LINTEL A MIN. 2'-0" BEYOND FACE OF OPENING EACH SIDE FOR STRAIGHT LINTEL REIN. AND 1'-0" FOR LINTEL REIN. WITH STANDARD ACI HOOK.  
 SCALE: N.T.S.

#	DESCRIPTION	DATE

RAINFOREST CARWASH #2  
6485 U.S. HWY. 49  
HATTIESBURG, MISSISSIPPI 39401

JOB No:	2212	DATE:	10-21-2014
DRAWN BY:	JTL	CHECKED BY:	CKD



**DAMMON**  
ENGINEERING, INC.  
Architects & Engineers

CHIEF ENGINEER, BRIAN MISTICH, P.E.  
554 OLD SPANISH TRAIL  
SLIDELL, LA 70456  
dammonengineering.com  
dammoneng@bellsouth.net  
PHONE: 985-649-5832  
FAX: 985-641-5990

CARWASH FOUNDATION & CMU DETAILS  
SHEET No: 09 OF 14

52