

POINT OF COMMENCEMENT
 FOUND RR SPIKE
 SW CORNER OF THE
 SE 1/4 OF THE SE 1/4,
 S31, 15N, R13W,
 FORREST COUNTY, MS

POINT OF BEGINNING
 SET IRON PIN

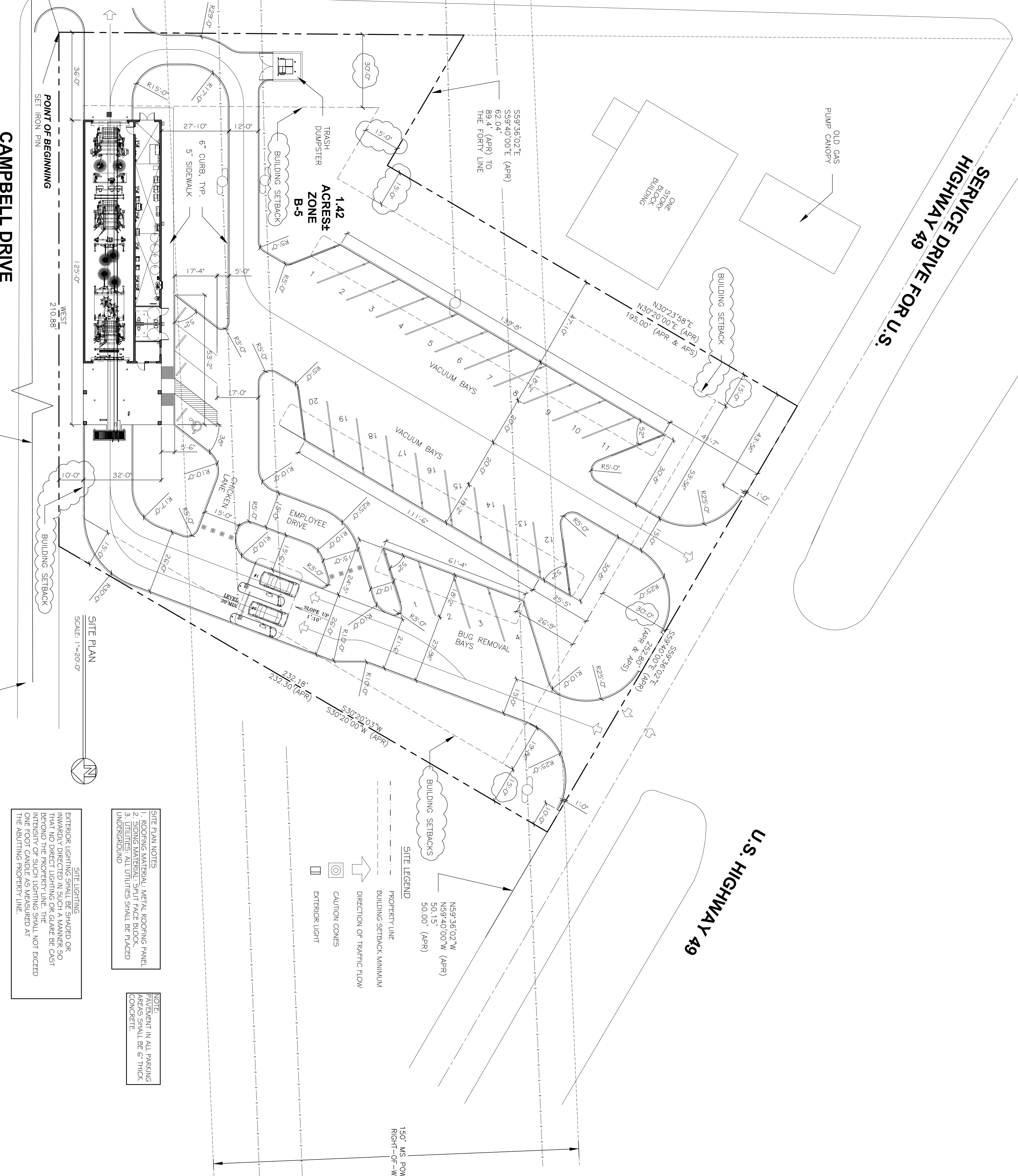
CAMPBELL DRIVE
 WEST
 210.88'

FOUND CONCRETE MONUMENT
 SE CORNER OF THE
 SE 1/4 OF THE SE 1/4,
 S31, 15N, R13W,
 FORREST COUNTY, MS

NORTH 31ST AVENUE

SERVICE DRIVE FOR U.S.
 HIGHWAY 49

U.S. HIGHWAY 49



SITE PLAN
 SCALE: 1" = 20'-0"

SITE LIGHTING
 EXTERIOR LIGHTING SHALL BE SHADOWED OR
 INWARDLY DIRECTED IN SUCH A MANNER SO
 THAT NO DIRECT LIGHTING OR GLARE BE CAST
 BEYOND THE PROPERTY LINE. THE
 INTENSITY OF SUCH LIGHTING SHALL NOT EXCEED
 ONE FOOT CANDLE AS MEASURED AT
 THE ADJUTING PROPERTY LINE.

SITE PLAN NOTES
 1. ROOFING MATERIAL: METAL ROOFING PANEL
 2. SIDING MATERIAL: SPUNT FACE BLOCK
 3. UTILITIES: ALL UTILITIES SHALL BE PLACED
 UNDERGROUND

NOTE
 PAINT IN ALL PARKING
 AREAS SHALL BE 6" THICK
 CONCRETE.

SITE LEGEND
 PROPERTY LINE
 BUILDING SETBACK MINIMUM
 DIRECTION OF TRAFFIC FLOW
 CAUTION CONES
 EXTERIOR LIGHT

PRELIMINARY (NOT FOR CONSTRUCTION)

SHEET No: 00 OF 00
C1

SITE PLAN

REVISIONS		DATE
#	DESCRIPTION	

RAINFOREST CARWASH #2
 6485 U.S. HWY. 49

HATTIESBURG, MISSISSIPPI
 JOB No: 2212 DATE: 07-17-2014
 DRAWN BY: CKD CHECKED BY: CKD

The above drawings and specifications, designs and arrangements represented hereby are and shall remain the property of Dammon Engineering, Inc. and shall not be copied, altered, or used in connection with any work or project other than the specific project for which they have been prepared and developed without written consent of Dammon Engineering. Your contact with these drawings or specifications shall constitute conclusive evidence of acceptance of these restrictions.

DAMMON ENGINEERING, INC.
 Architects & Engineers

CHIEF ENGINEER: BRIAN MISTICH, P.E.
 CHIEF ARCHITECT: KEVIN KINCHEN
 554 OLD SPANISH TRAIL
 SLIDELL, LA 70458

dammonengineering.com
 dammoneng@bellsouth.net
 PHONE: 985-649-5832
 FAX: 985-641-5990