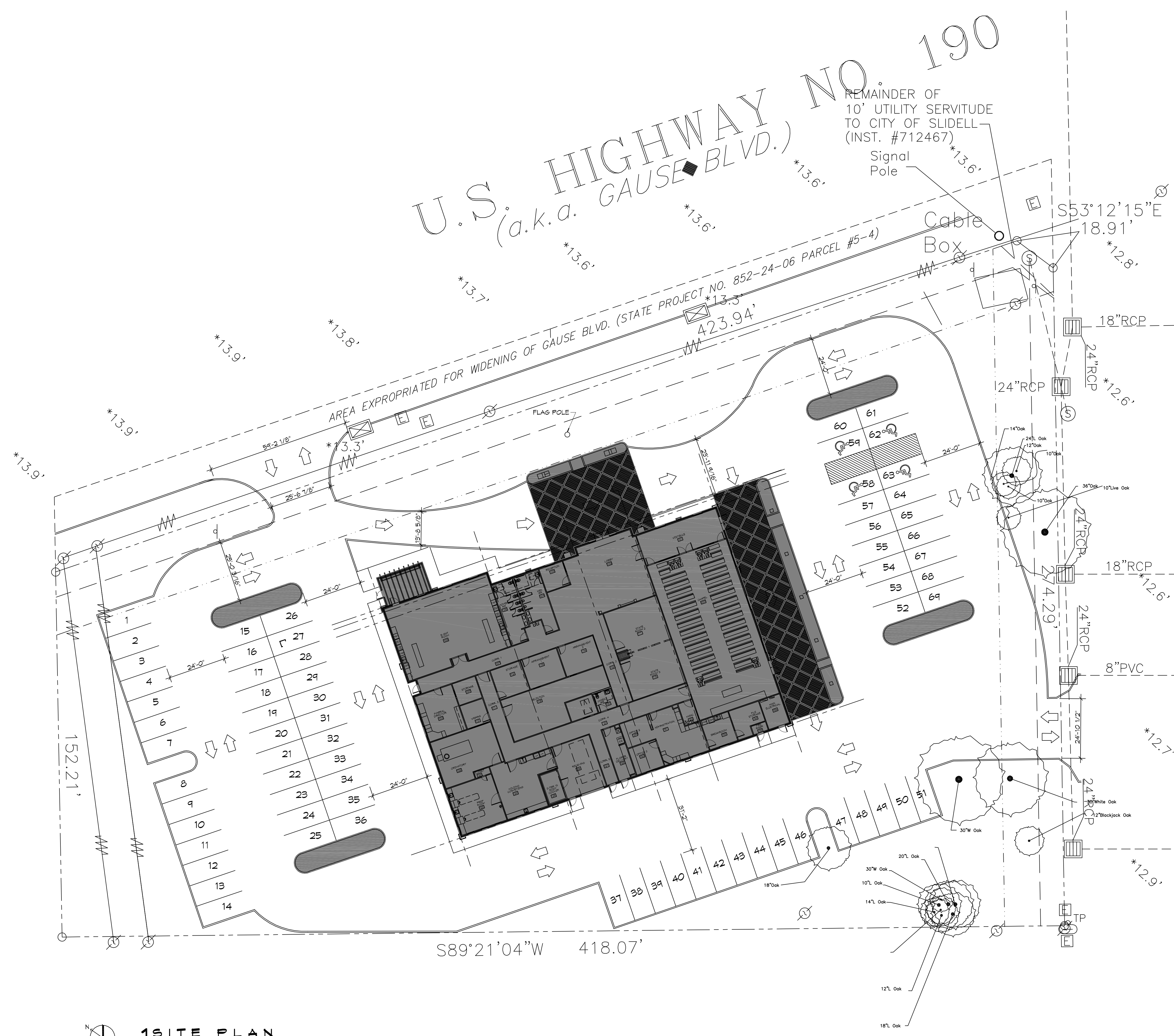


PLANNING
 ZONED - C4 HIGHWAY COMMERCIAL
 PARKING REQUIREMENTS
 1 SPACE FOR EACH 5 SEATS IN THE MAIN AUDITORIUM OR 64 SQUARE FEET WHERE THERE ARE NO SEATS.
 BUILDING ELEVATION
 BASE FLOOD ELEVATION = N/A
 FINISHED FLOOR ELEVATION = TBD
 FLOOD ZONE
 ZONE "C"

U.S. HIGHWAY NO. 190
 (a.k.a. GAUSE BLVD.)
 REMAINDER OF 10' UTILITY SERVITUDE TO CITY OF SLIDELL (INST. #712467)



PEARL STREET

PLANNING
ZONED - C4 HIGHWAY COMMERCIAL
PARKING REQUIREMENTS
1 SPACE FOR EACH 5 SEATS IN THE MAIN AUDITORIUM OR 64 SQUARE FEET WHERE THERE ARE NO SEATS.
BUILDING ELEVATION
BASE FLOOD ELEVATION = N/A FINISHED FLOOR ELEVATION = TBD
FLOOD ZONE
ZONE "C"

DAMMON ENGINEERING, INC.
 LOUISIANA & MISSISSIPPI
 Chief Engineer: Brian Mistich, PE
 594 Old Spanish Trail
 Slidell, LA 70688
 www.dammonengineering.com
 info@dammonengineering.com
 PH: 852.647.5622

REVISIONS	DATE
#	DESCRIPTION

SEAL:

NEW FUNERAL HOME
 2091 GAUSE BLVD E
 SLIDELL, LA 70461
 JOB NO: 2333
 DATE: 04-19-2018
 DRAWN BY: CAD
 CHECKED BY: CAD

SHEET TITLE:
 SITE PLAN WITH SURVEY

DRAWING NUMBER:
C100
 SHEET No: 1 of # 7

1 SITE PLAN
 SCALE: 1" = 20'-0"

