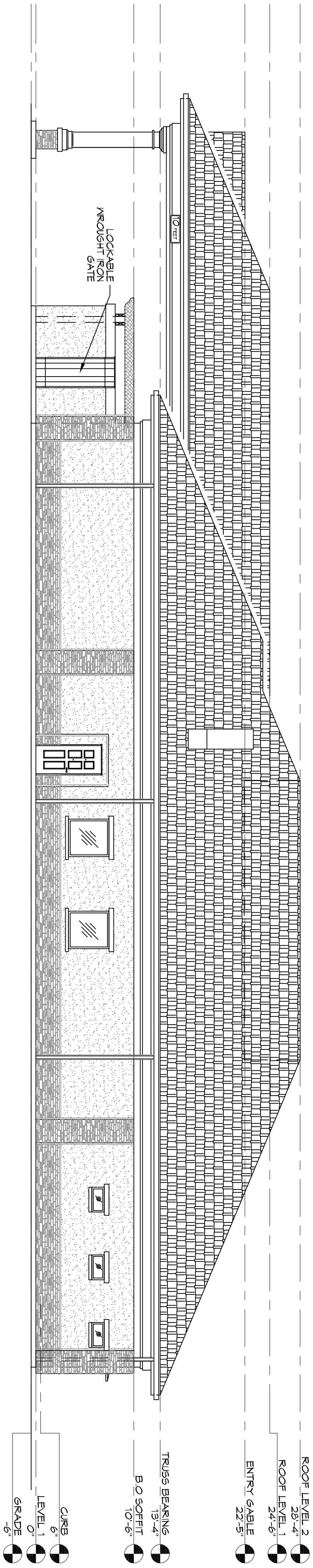


2 LEFT SIDE ELEVATION
SCALE: 1/8"=1'-0"



1 FRONT ELEVATION
SCALE: 1/8"=1'-0"

GENERAL NOTES

- 1. ALL STUCCO SURFACES TO BE SAND FINISH.
- 2. MAIN FIELD COLOR TO BE EP1.
- 3. ALL STUCCO SOFFITS TO HAVE SAND FINISH.
- 4. ALL 2X FASCIAS AND HARDIE BOARD FASCIAS TO BE PAINTED (EP2).
- 5. ALL DRIP EDGES & FLASHING, MISC. METAL TRIM & RAIN HOODS TO BE KAYNAR 500 FINISH (CUSTOM COLOR EP2 (UNO)).
- 6. ALL GUTTERS & DOWNSPOUTS TO BE PRE-FINISHED KAYNAR 500 FINISH (CUSTOM COLOR EP2. SEE A500 FOR DOOR & WINDOW FINISHES & COLORS).

NOTE:

	EP1-CEMENTITIOUS FINISH-STUCCO / SAND TEXTURE
	EP2-CEMENTITIOUS FINISH-STUCCO / SAND TEXTURE
	STACKED STONE
	DIMENSIONAL SHINGLE

DAMMON ENGINEERING, INC.
LOUISIANA & MISSISSIPPI

Chief Engineer: Brian Mistich, PE
554 Old Spanish Trail
Stidell, LA 70458
www.dammonengineering.com
info@dammonengineering.com
PH: 985.649.5832

REVISIONS		
#	DESCRIPTION	DATE

L A M M O N E N G I N E E R I N G

2001 GAUSE BLVD E
SLIDELL, LA 70461

JOB No: 2360 DATE: 04-14-2018
DRAWN BY: JAGMVA CHECKED BY: CKD

The above drawings, specifications, design and descriptions represent the work of our firm and are the property of Dammon Engineering, Inc. and are not to be used, copied, reproduced or otherwise, or used in connection with any work or project other than the specific project for which they have been prepared and developed without written consent of Dammon Engineering, Inc. Your contract with these drawings or specifications and conditions of contract shall govern. All other drawings or specifications shall be subject to the conditions of contract.

SHEET TITLE:
FRONT AND LEFT SIDE ELEVATIONS

DRAWING NUMBER:
A201

SHEET NO.: 6 OF 8