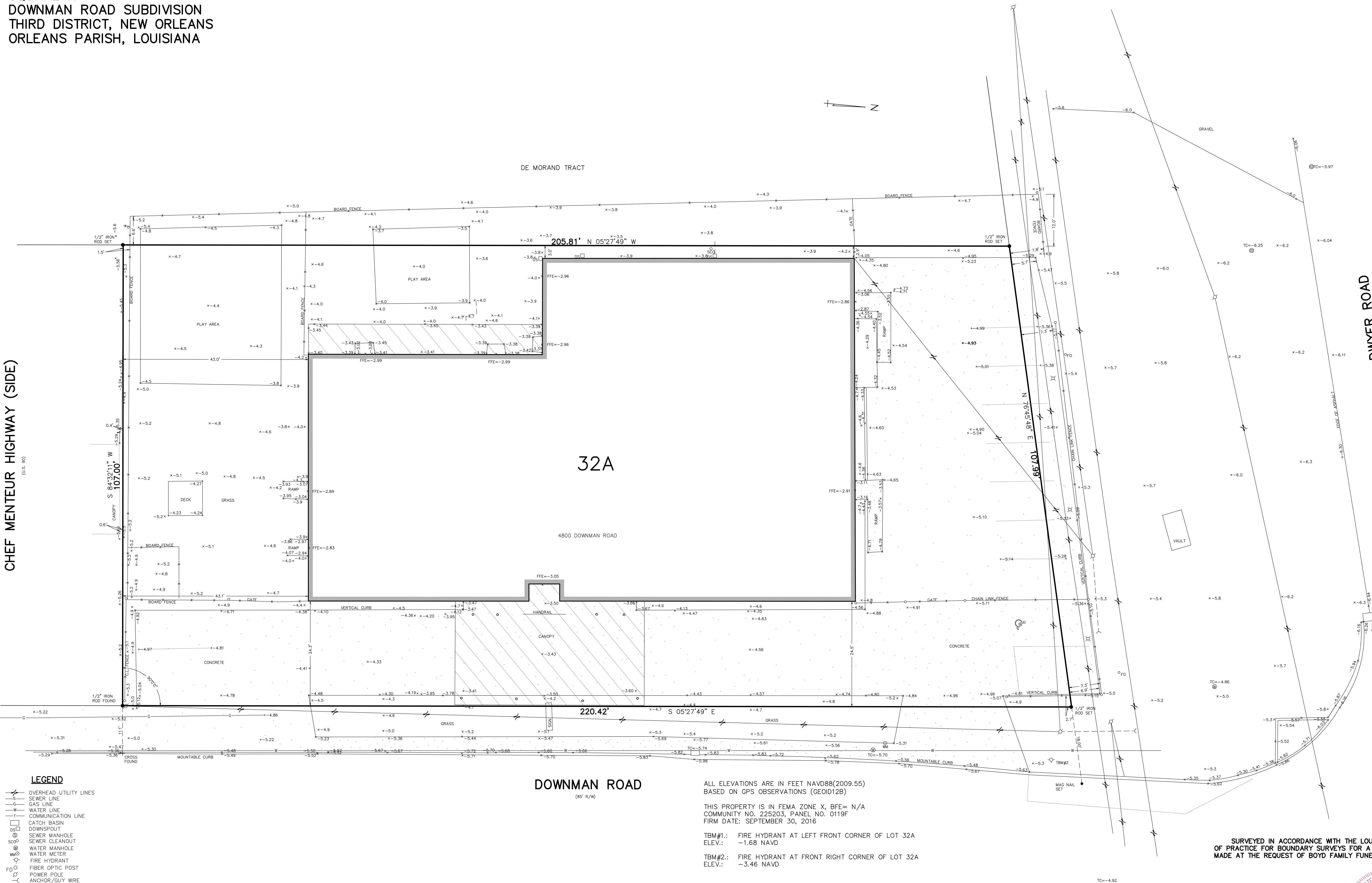


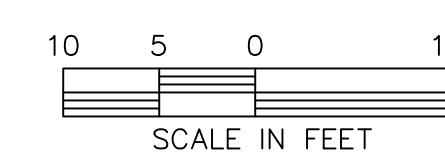
SQUARE H
DOWNMAN ROAD SUBDIVISION
THIRD DISTRICT, NEW ORLEANS
ORLEANS PARISH, LOUISIANA

CHEF MENTEUR HIGHWAY (SIDE)

DWYER ROAD



- LEGEND**
- OVERHEAD UTILITY LINES
 - SEWER LINE
 - GAS LINE
 - WATER LINE
 - COMMUNICATION LINE
 - CATCH BASIN
 - DOWNSPOUT
 - SEWER MANHOLE
 - SEWER CLEANOUT
 - WATER MANHOLE
 - WATER METER
 - FIRE HYDRANT
 - FIBER OPTIC POST
 - POWER POLE
 - ANCHOR/GUY WIRE
 - LIGHT POLE
 - BOLLARD



REFERENCE:
-SURVEY BY DADON, MARQUES & ASSOCIATES
DATED JULY 13, 1999

THE SERVICES AND RESTRICTIONS SHOWN ON THIS SURVEY ARE LIMITED TO THOSE SET FORTH IN THE DESCRIPTION FURNISHED TO US, AND THERE IS NO REPRESENTATION THAT ALL APPLICABLE SERVICES AND RESTRICTIONS ARE SHOWN HEREON. THE SURVEYOR HAS MADE NO TITLE SEARCH OR PUBLIC RECORD SEARCH IN COMPLYING WITH THE DATA FOR THIS SURVEY.

The locations of underground and other nonvisible utilities shown hereon have been determined from data either furnished by the agencies controlling such data and/or extracted from records made available to us by the agencies controlling such records. Where found, the surface features of locations are shown. The actual nonvisible locations may vary from those shown hereon. Each agency should be contacted relative to the precise location of its underground installation prior to any reliance upon the accuracy of such locations shown hereon, including prior to excavation and digging.

DOWNMAN ROAD
(65' R/W)

ALL ELEVATIONS ARE IN FEET NAVD88(2009.55)
BASED ON GPS OBSERVATIONS (GEOD12B)

THIS PROPERTY IS IN FEMA ZONE X, BFE= N/A
COMMUNITY NO. 225203, PANEL NO. 0119F
FIRM DATE: SEPTEMBER 30, 2016

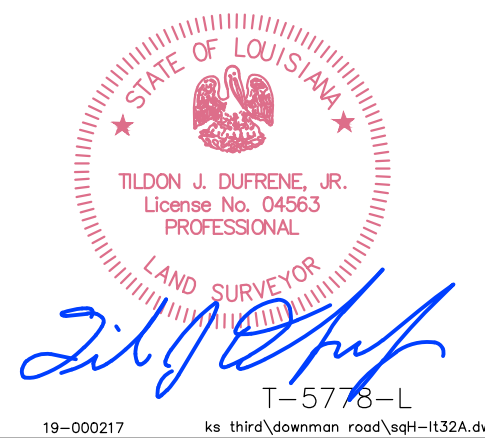
TBM#1: FIRE HYDRANT AT LEFT FRONT CORNER OF LOT 32A
ELEV.: -1.68 NAVD

TBM#2: FIRE HYDRANT AT FRONT RIGHT CORNER OF LOT 32A
ELEV.: -3.46 NAVD

APRIL 15, 2019

SURVEYED IN ACCORDANCE WITH THE LOUISIANA STANDARDS
OF PRACTICE FOR BOUNDARY SURVEYS FOR A CLASS C SURVEY,
MADE AT THE REQUEST OF BOYD FAMILY FUNERAL HOME

**DUFRENE SURVEYING
& ENGINEERING INC.**
1624 MANHATTAN BOULEVARD, HARVEY, LA 70058
504-368-6390 PH.
504-368-6394 FAX
dufrene@dufrenesurveying.com



T-5778-L
19-000217