

FILE NAME: J:\Projects\2024\24-Power Floor Plan.dwg PLOT DATE: 10/13/2024 PLOT TIME: 10:19:20 AM

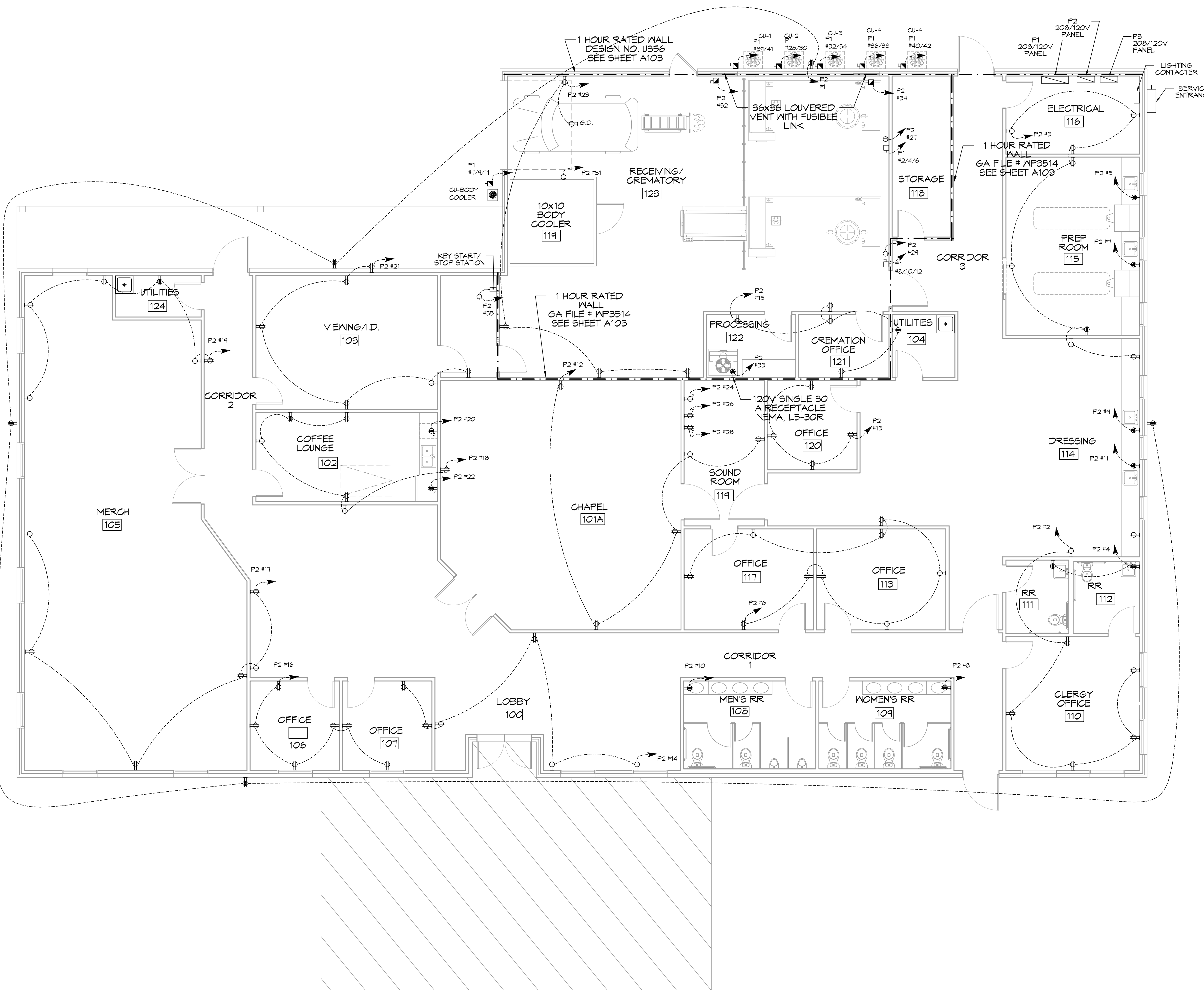
GENERAL ELECTRIC POWER NOTES

- ALL WORK SHALL CONFORM TO THE LATEST EDITION OF THE NATIONAL ELECTRICAL CODE, THE GOVERNING ELECTRICAL CODE AND ALL OTHER INSPECTION DEPARTMENTS HAVING JURISDICTION. OBTAIN CERTIFICATES OR APPROVAL WHERE REQUIRED. ELECTRICAL CONTRACTOR SHALL VERIFY ALL WIRE AND CONDUIT SIZES FOR MECHANICAL EQUIPMENT TO BE INSTALLED.
- ALL MATERIALS FURNISHED SHALL BE NEW AND SHALL BE U.L. LISTED.
- THE DRAWINGS INDICATE SIZE AND GENERAL LOCATION OF WORK. SCALE DIMENSIONS SHALL NOT BE USED. THE EXACT LOCATION OF ALL LIGHTING FIXTURES, RECEPTACLES AND TELEPHONE OUTLETS, ETC. SHALL BE DETERMINED BY ACTUAL CONDITIONS IN THE FIELD.
- PRIOR TO BIDDING, CONTRACTOR SHALL VISIT THE JOB SITE AND FAMILIARIZE THEMSELVES WITH THE EXISTING CONDITIONS.
- ELECTRICAL CONTRACTOR SHALL COORDINATE HIS WORK WITH OTHER TRADES AND WITH OTHER CONTRACTORS WHOSE WORK MAY AFFECT THIS INSTALLATION.
- ELECTRICAL CONTRACTOR SHALL COORDINATE INCOMING ELECTRICAL SERVICE WITH UTILITY COMPANY AND INCLUDE IN HIS BID ALL CHARGES AND FEES INCURRED IN MODIFICATIONS.
- ELECTRICAL CONTRACTOR SHALL COORDINATE THE TELEPHONE INSTALLATION WITH THE TELEPHONE COMPANY AND THE GENERAL CONTRACTOR.
- ELECTRICAL CONTRACTOR, BEFORE INSTALLING ANY OF THE WORK, SHALL SEE THAT IT DOES NOT INTERFERE WITH CLEARANCES REQUIRED FOR FINISHED COLUMNS, HUNG CEILINGS, PLASTER, PARTITIONS, WALLS, ETC. AS SHOWN IN THE ARCHITECTURAL DRAWINGS AND DETAILS. IF ANY WORK IS INSTALLED AND IT LATER DEVELOPS THAT SUCH DETAILS OR DESIGN CANNOT BE FOLLOWED, THE CONTRACTOR, AT HIS OWN EXPENSE, SHALL MAKE SUCH CHANGES IN THE WORK, AS DIRECTED BY THE ARCHITECT, AS WELL AS TO PERMIT THE INSTALLATION OF THE ARCHITECTURAL WORK AS SHOWN ON THE PLANS AND DETAILS.
- PERFORM TEST REQUIRED BY THE OWNER OR THE ENGINEER IN CONNECTION WITH THE OPERATION OF THE ELECTRICAL SYSTEM IN THE BUILDING. ALL TESTS SHALL BE MADE IN ACCORDANCE WITH THE LATEST STANDARD OF THE IEEE AND THE NATIONAL ELECTRICAL CODE.
- MINIMUM CONDUCTOR SIZE SHALL BE #12, 600V INSULATION. MINIMUM SIZE CONDUIT SHALL BE 3/4" ELECTRICAL METALLIC TUBING (EMT) FOR INTERIOR USE, 3/4" RIGID ALUMINUM FOR EXTERIOR USE ABOVE GRADE AND 1" SCHEDULE 40 PVC, BURIED A MINIMUM OF 18" FOR NON-VEHICULAR TRAFFIC AREAS, FOR CONDUITS BELOW GRADE. EMT SHALL BE USED WITH METAL STUD CONSTRUCTION. USE NMC IN WOOD CONSTRUCTION. 6 FT LENGTH MC CABLE IS ALLOWED ABOVE DROPPED CEILING. INTERIOR FITTINGS SHALL BE CAST WHERE EXPOSED ON WALLS, AND EXTERIOR FITTINGS SHALL BE CAST BOXES WITH NEMA 3R COVER(S).
- ALL BRANCH CIRCUITS SERVING PATIENT CARE AREAS SHALL BE IN A METAL RACEWAY SYSTEM OR MEDICAL GRADE MC CABLE (NEC ART. 517.13(A)).
- CONTRACTOR SHALL INSTALL WIRING AND OTHER CIRCUIT COMPONENTS TO MATCH EQUIPMENT ACTUALLY INSTALLED.
- ALL 120V RUNS LONGER THAN 60 FEET SHALL BE #10 AWG AND 277V RUNS LONGER THAN 150 FEET SHALL BE #10 AWG UNLESS NOTED OTHERWISE.
- INSTALL GROUND FAULT RECEPTACLES AT RECEPTACLE LOCATIONS WITHIN 5' OF SINKS OR LAVATORIES, AND AT EXTERIOR LOCATIONS. EXTERIOR RECEPTACLES SHALL ALSO BE WATERPROOF.
- INSTALL SPECIAL PROTECTIVE RECEPTACLE COVERS IN ALL WAITING AREAS OCCUPIED BY CHILDREN 6 YEARS OF AGE AND UNDER.
- BONDING AND GROUNDING SHALL BE IN ACCORDANCE WITH NFPA 10:250-63, NFPA 250-23, 250-11 & 250-12.
- GROUND NEUTRAL IN ACCORDANCE WITH NFPA 10:250-23b.
- FUSES SHALL BE ITT GLASS KS, 250 VOLT, 200,000 AMP INTERRUPTING CAP.
- PROVIDE SERVICES OF A FIRE/SMOKE DETECTION AND ALARM COMPANY TO DESIGN AND INSTALL ALARM SYSTEM TO MEET REQUIREMENTS OF THE STATE FIRE MARSHALL AND THE FIRE DISTRICT.
- EXTERIOR LIGHTING SHALL BE SHADED OR INWARDLY DIRECTED IN SUCH A MANNER SO THAT NO DIRECT LIGHTING OR GLARE IS CAST BEYOND THE PROPERTY LINE. THE INTENSITY OF SUCH LIGHTING SHALL NOT EXCEED ONE FOOT CANDLE AS MEASURED AT THE ABUTTING PROPERTY LINE.
- ALL ELECTRICAL, MECHANICAL AND PLUMBING PENETRATING FIRE PARTITIONS SHALL BE FIRE CAULKED. (PENETRATIONS THROUGH RATED CONSTRUCTION SHALL BE SEALED WITH A MATERIAL CAPABLE OF PREVENTING THE PASSAGE OF FLAMES AND HOT GASES WHEN TESTED IN ACCORDANCE WITH ASTM-E814.)
- VERIFY ELECTRICAL CONNECTIONS PER MANUFACTURER'S RECOMMENDATIONS AND REQUIREMENTS.
- ALL RECEPTACLES AND SWITCHES ARE TO HAVE WEATHER PROOF COVERS IN APPROPRIATE BAY. 50% OF ALL EXTERIOR WEATHER PROOF COVERS SHALL BE IN-USE COVERS.
- LIGHT FIXTURE AND/OR RECEPTACLE, LOCATED IN ATTIC.

POWER LEGEND

SYMB	DESCRIPTION
	STANDARD 120V DUPLEX RECEPTACLE, NEMA 5-2 OR 15' AFF (UNLESS OTHERWISE NOTED)
	SINGLE-POLE DEDICATED RECEPTACLE - REFER TO PANEL SCHEDULE FOR CIRCUIT SIZE
	GFCI DUPLEX RECEPTACLE
	GFCI QUAD RECEPTACLE
	220V ELECTRIC DRYER RECEPTACLE - MOUNTED AT 30" AFF
	220V DEDICATED GFCI RECEPTACLE
	WEATHER-PROOF GFCI DUPLEX RECEPTACLE MOUNTED AT 30" AFF (UNLESS OTHERWISE NOTED)
	STANDARD 120V DUPLEX RECEPTACLE - FLOOR MOUNTED
	STANDARD QUAD RECEPTACLE - WALL MOUNTED
	STANDARD QUAD RECEPTACLE - FLOOR MOUNTED
	125V 15 AMP DUPLEX-USB BY/DC 3 AMP HUBBELL USB CHARGER RECEPTACLE
	125V 15 AMP QUADPLEX-USB BY/DC 3 AMP HUBBELL USB CHARGER RECEPTACLE
	JUNCTION BOX
	GENERATOR BATTERY CHARGER
	2-BUTTON PUSH BUTTON STATION
	COAX-CABLE CONNECTION FOR TELEVISION
	WALL MOUNTED DATA OUTLET
	FLOOR DATA OUTLET
	POWER DISCONNECT
	WATER HEATER ON DECK OR MEZZANINE ABOVE - SIZE AS NOTED ON PLAN
	AIR CONDITIONING AIR HANDLING UNIT ON DECK OR MEZZANINE ABOVE, SEE MECHANICAL DRAWINGS
	AIR CONDITIONING CONDENSER UNIT ON CONCRETE PAD, SEE MECHANICAL DRAWINGS

NOTES:
 1. CONNECT ALL EMERGENCY/EXIT LIGHT FIXTURES TO NEAREST CONSTANT POWER SOURCE.
 2. THE #2 NEXT TO A RECEPTACLE OR DATA OUTLET DESIGNATES THAT THERE ARE TO BE TWO OUTLETS AT THAT LOCATION, ONE OVER THE OTHER (ONE HIGH & ONE LOW ON WALL). EXAMPLE: OR



PANEL SCHEDULE												
PANEL: P1			VOLTAGE: 208/120V, 350A, 3Ø, 4W MAIN BREAKER			ENCLOSURE: SURFACE MOUNTED W/ EQUIPMENT GND BAR SQUARE D, I-LINE PANELBOARD			LOCATION: ELECTRICAL ROOM			AG = 22,000
CKT NO	THHN WIRE SIZE	LOAD DESCRIPTION	BREAKER	LOAD (VA)	AS	BS	CS	LOAD (VA)	BREAKER	LOAD DESCRIPTION	THHN WIRE SIZE	CKT NO
1				18970				4800				2
3	250KCM	PANELS "P2" AND "P3"	200	3	18090			4800	3	80		4
5				18840				4800				6
7				950				4800				8
4	#12	BODY COOLER	15	3	950			4800	3	50		10
11				950				4800				12
13												14
15	#6	SPARE	40	3					3	30		16
11												18
14	#10	HVAC No. 1	30	2	1800							20
21				1800								22
23	#6	HVAC No. 2	50	2	2400							24
25				2400								26
21	#10	HVAC No. 3	30	2	1800			1800	2	40		28
24				1800				1800				30
31	#6	HVAC No. 4	50	2	2400			1200	2	30		32
33				2400				1200				34
35	#6	HVAC No. 5	50	2	2400			1600	2	40		36
37				2400				1600				38
34	#12	CONDENSER UNIT No. 1	15	2	460			450	2	20		40
41				460				450				42

SOLID NEUTRAL NEUTRAL WIRE (N)

TOTAL CONNECTED LOAD (VA) = 118,920

GROUND BUS GROUND WIRE (G)

AS = 40,820 BS = 38,880 CS = 39,220

PANEL SCHEDULE												
PANEL: P2			VOLTAGE: 208/120V, 200A, 3Ø, 4W M/MLO			ENCLOSURE: SURFACE MOUNTED W/ EQUIPMENT GND BAR SQ D TYPE GO LOAD CENTER			LOCATION: ELECTRICAL ROOM			AG = 22,000
CKT NO	THHN WIRE SIZE	LOAD DESCRIPTION	BREAKER	LOAD (VA)	AS	BS	CS	LOAD (VA)	BREAKER	LOAD DESCRIPTION	THHN WIRE SIZE	CKT NO
1	#12	RECEPTACLES, EXTERIOR	20	1	900			1000	1	20		2
3	#12	RECEPTACLES, EQUIPMENT AND PREP ROOMS	20	1	1440			1200	1	20		4
5	#12	DEDICATED RECEPTACLE, PREP ROOM	20	1	1200			1620	1	20		6
7	#12	DEDICATED RECEPTACLE, PREP ROOM	20	1	1200			1200	1	20		8
4	#12	DEDICATED RECEPTACLE, DRESSING ROOM	20	1	1200			1200	1	20		10
11	#12	DEDICATED RECEPTACLE, DRESSING ROOM	20	1	1200			1080	1	20		12
13	#12	RECEPTACLES, OFFICE	20	1	720			1080	1	20		14
15	#12	RECEPTACLES, PROCESSING AREA, OFFICE AND UTILITIES	20	1	900			1080	1	20		16
17	#12	RECEPTACLES, MERCH ROOM	20	1	1080			1260	1	20		18
14	#12	RECEPTACLES, VISITATION AND VIEWING ROOM	20	1	1080			1500	1	20		20
21	#12	RECEPTACLES, VIEWING AND ID ROOM	20	1	1080			1500	1	20		22
23	#12	RECEPTACLES, RECEIVING/ CREMATORY	20	1	900			1200	1	20		24
25	#12	RECEPTACLES, ATTIC	20	1	1260			1200	1	20		26
27	#12	CONTROL POWER TO CREMATOR No. 1	15	1	500			1200	1	20		28
24	#12	CONTROL POWER TO CREMATOR No. 2	15	1	500			500	1	15		30
31	#12	BODY COOLER, EVAPORATOR AND LIGHTS	20	1	500			500	1	20		32
33	#10	3ØA RECEPTACLE FOR PROCESSING STATION	30	1	2500			500	1	20		34
35	#12	CONTROL POWER TO KEY SWITCH CREMATOR VIEWING ROOM	15	1	500							36
37												38
34												40
41												42

SOLID NEUTRAL NEUTRAL WIRE (N)

TOTAL CONNECTED LOAD (VA) = 31,560

GROUND BUS GROUND WIRE (G)

AS = 12,220 BS = 14,300 CS = 11,040

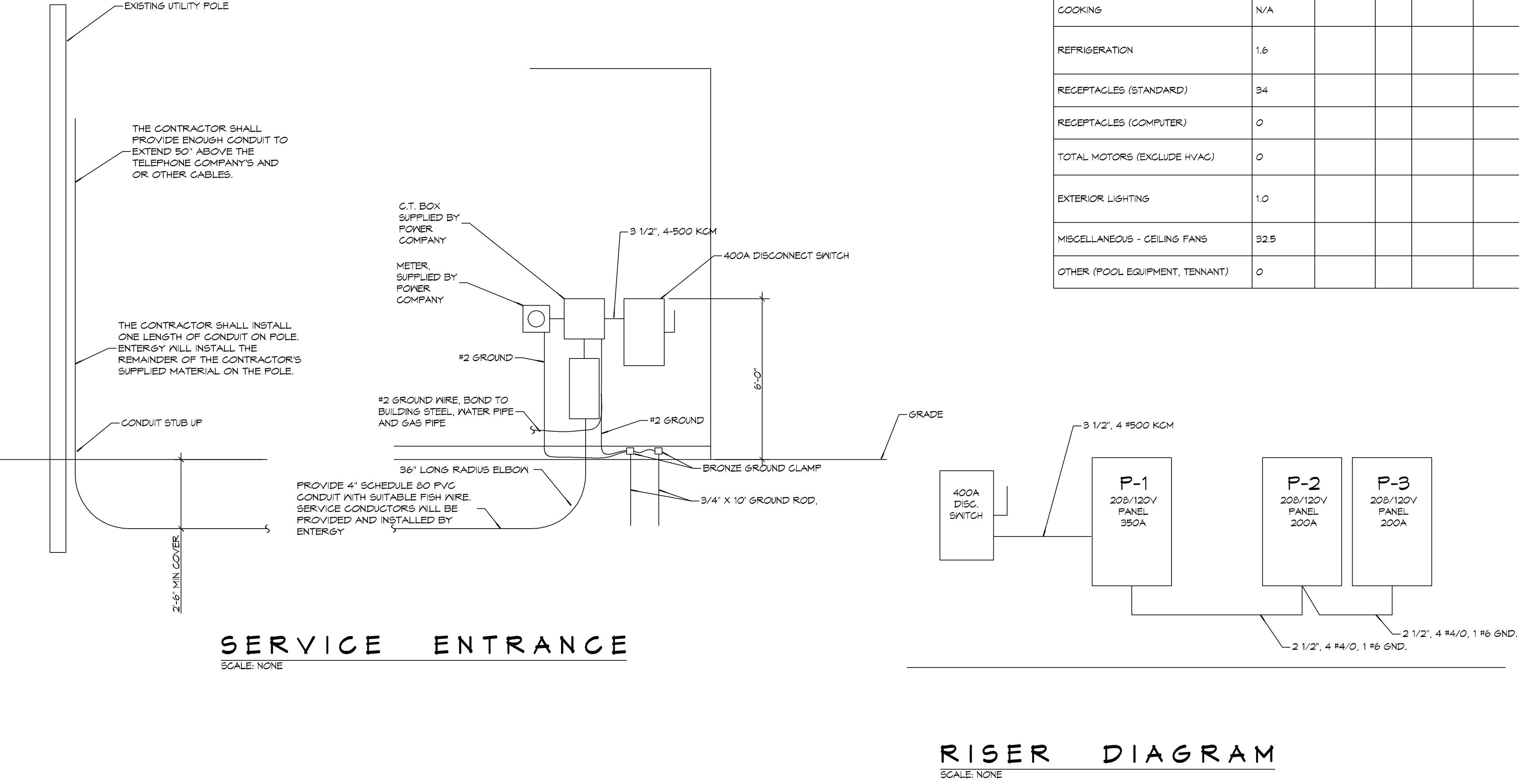
PANEL SCHEDULE												
PANEL: P3			VOLTAGE: 208/120V, 200A, 3Ø, 4W M/MLO			ENCLOSURE: SURFACE MOUNTED W/ EQUIPMENT GND BAR SQ D TYPE GO LOAD CENTER			LOCATION: ELECTRICAL ROOM			AG = 22,000
CKT NO	THHN WIRE SIZE	LOAD DESCRIPTION	BREAKER	LOAD (VA)	AS	BS	CS	LOAD (VA)	BREAKER	LOAD DESCRIPTION	THHN WIRE SIZE	CKT NO
1	#12	LIGHTS, DRESSING ROOM AND CORRIDOR	20	1	1000			1500	1	20		2
3	#12	LIGHTS, ELECTRICAL ROOM UNSEX RESTROOM AND OFFICES	20	1	1100				1	20		4
5	#12	LIGHTS, CORRIDOR	20	1	800			1000	1	20		6
7	#12	LIGHTS, CHAPEL	20	1	1100				1	20		8
4	#12	LIGHTS, CENTER OFFICES AND SOUND ROOM	20	1	700			1000	1	20		10
11	#12	LIGHTS, VIEWING ID ROOM AND COFFEE LOUNGE	20	1	1600			900	1	20		12
13	#12	SPARE	20	1				400	1	20		14
15	#12	LIGHTS, HOLDING, OFFICES, STORAGE ROOM	20	1	500				20			16
17	#12	LIGHTS, RECEIVING, CREMATORY	20	1	1100							18
14	#12	OUTSIDE LIGHTS, REAR THROUGH LIGHTING CONTACTOR	20	1	350							20
21	#10	PARKING LOT LIGHTS THROUGH LIGHTING CONTACTOR	20	2	450							22
23				450								24
25												26
27												28
24												30
31												32
33												34
35												36
37												38
34												40
41												42

SOLID NEUTRAL NEUTRAL WIRE (N)

TOTAL CONNECTED LOAD (VA) = 13,150

GROUND BUS GROUND WIRE (G)

AS = 4,350 BS = 3,750 CS = 5,050



ELECTRICAL LOAD SUMMARY

ENTERGY POWER COMPANY				
PROJECT NAME:	BOYD FAMILY FUNERAL HOME			
PROJECT ADDRESS:	4800 DOWNMAN ROAD			
CITY/TOWN:	NEW ORLEANS, LOUISIANA			
INTENDED USER:	BOYD			
REQ SERV:	208	V	3	PHASE 4 WIRES
SERV ENTR SIZE:	350 AMPS			
HVAC TONNAGE:	19 TONS			
LARGEST MOTOR:	HP			
(NOTE: MOTORS ABOVE 20HP MAY REQUIRE REDUCED VOLTAGE STARTING AND ARE NEVER RECOMMENDED FOR USE W/ 120/240V, 1Ø, 3Ø SERVICE)				
TOTAL BUILDING SQ FT:	11000	SF		
INDIVIDUAL UNIT SQUARE FOOTAGE:		SF (MULT OCCUPANCY)		
INDIVIDUAL UNIT DESIGNATION:		(MULT OCCUPANCY)		
LOAD SOURCE	1Ø-KVA	3Ø-KVA	OR	1Ø-KVA 3Ø-KVA
BUILDING LIGHTING	14.0			
ELECTRIC WATER HEATING	0.0			
HEAT PUMPS				
SUPPLEMENTAL HEAT SYSTEMS				
AIR COND CONDENSING UNITS	11.6			
ELEC HEATING (PRIMARY) - AHU'S	24.6			
COOKING	N/A			
REFRIGERATION	1.6			
RECEPTACLES (STANDARD)	34			
RECEPTACLES (COMPUTER)	0			
TOTAL MOTORS (EXCLUDE HVAC)	0			
EXTERIOR LIGHTING	1.0			
MISCELLANEOUS - CEILING FANS	32.5			
OTHER (POOL EQUIPMENT, TENNANT)	0			

DAMMON ENGINEERING, INC.
LOUISIANA & MISSISSIPPI

Chief Engineer: Brian Mistich, PE
554 Old Spanish Trail
Slidell, LA 70468
www.dammonengineering.com
info@dammonengineering.com
PH: 985.649.5832

DATE: 10-15-2022
JOB NO: 2386
DATE: 2386
CHECKED BY: AF/JAG/MK

SEAL:

NEW FUNERAL HOME
BOYD FAMILY FUNERAL HOME
4800 DOWNMAN ROAD
NEW ORLEANS, LA
JOB NO: 2386
DATE: 10-15-2022
DRAWN BY: AF/JAG/MK
CHECKED BY: AF/JAG/MK

SHEET TITLE: ELECTRICAL PANEL SCHEDULES
DRAWING NUMBER: **E105**
SHEET No: 21 of 21