

SPLIT SYSTEM SCHEDULE																	
AIR HANDLER						CONDENSING UNIT											
TAG	MAKE/MODEL	NOMINAL TONS	TOTAL CFM	OACFM	Motor HP	ESP (" WC)	HEAT			TAG	MAKE/MODEL	NOMINAL TONS	POWER			REMARKS	
							KW	VAC	PH				MCA	VAC	PH		MCA
AHU-1	Trane TEM6AOC36	3	1200	110	1/2	0.3	3.6	208	1	25	C-1	Trane 4TTR5036	3	208	1	19	1, 2, 3

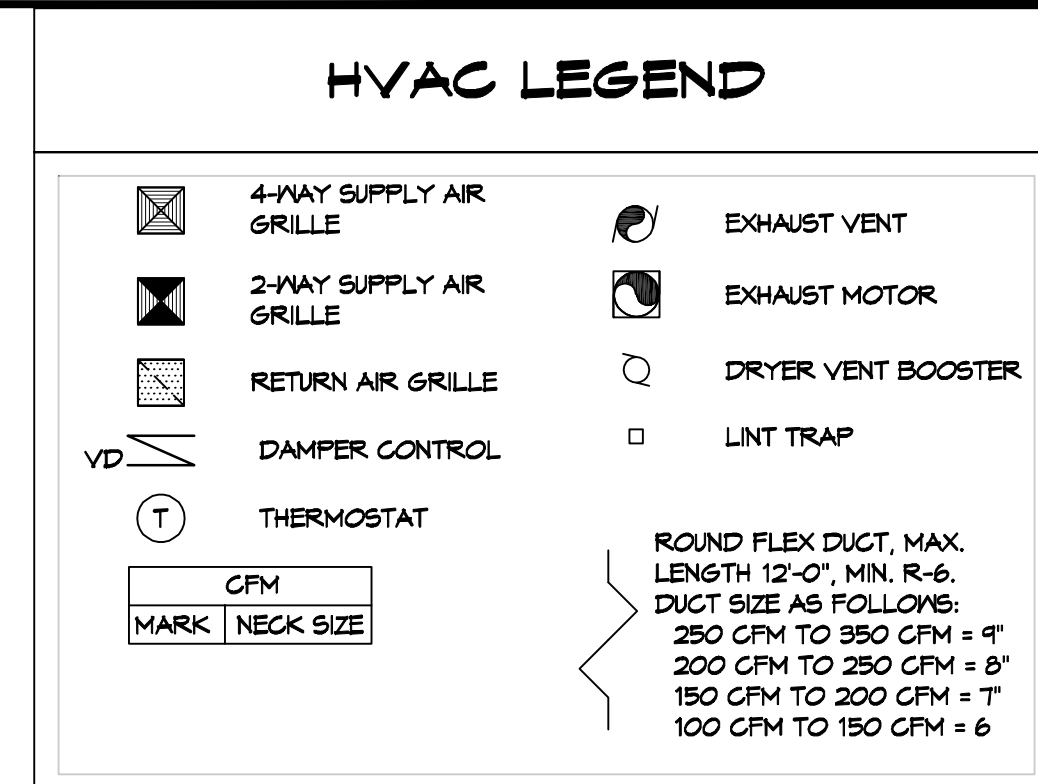
NOTES:
 1. Provide expansion valve, condensate overflow switch & programmable 7/24 thermostat with lockable cover.
 2. Install units in accordance with manufacturer's recommendations.
 3. Provide new filters after commissioning and final acceptance.

DIFFUSER SCHEDULE			
TAG	SERVICE	NECK SIZE	DESCRIPTION
A	Supply Air	Ref. Plan 24" x 24" Square Cone Diffuser, Price ASCDA	
B	Supply Air	Ref. Plan 12" x 12" Square Cone Diffuser, Price ASCDA	
C	Return Air	Ref. Plan 24" X 24" Perforated, Ducted Return, Titus PAR	
D	Exhaust	Ref. Plan 6" x 6" Eggcrate Exhaust Grille, Price 80	

Notes:
 1. Seal around perimeter of diffusers/grilles to prevent moisture migration from attic space
 2. Coordinate with owner / architect for color and finish
 3. R value of insulated back panels to exceed R-6

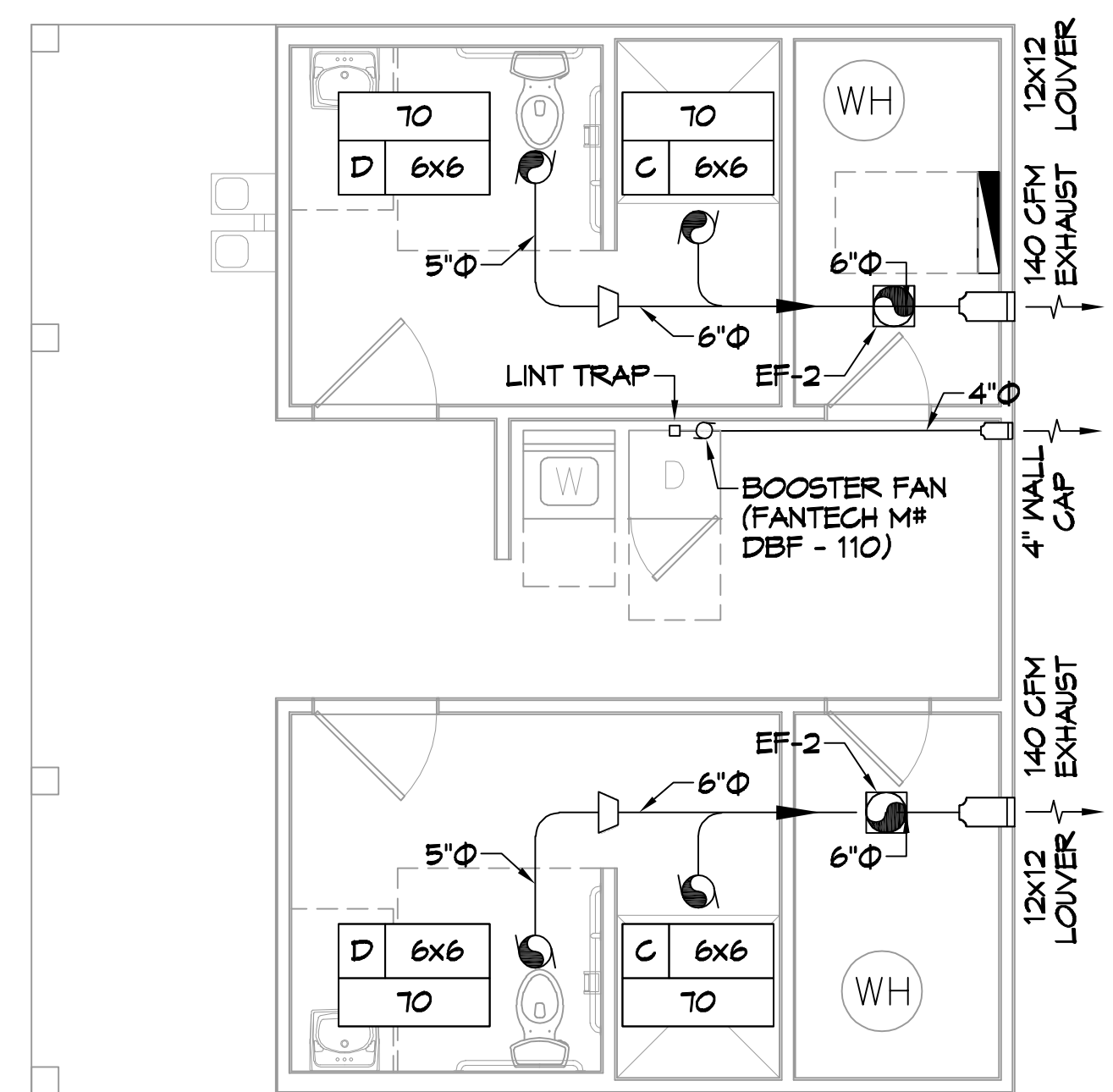
EXHAUST FAN SCHEDULE									
TAG	FAN			POWER			MAKE / MODEL	REMARKS	
	AIRFLOW (CFM)	TSP (" wc)	AMPS	TYPE	VAC	PH			HZ
EF-1	80	0.10	0.4	Ceiling Exhaust	120	1	60	Broan A80	1, 2
EF-2	140	0.13	1.2	In-Line Exhaust	120	1	60	Cook GN-148	1, 2

1. Install per manufacturer's recommendations
 2. Furnish with inline backdraft damper

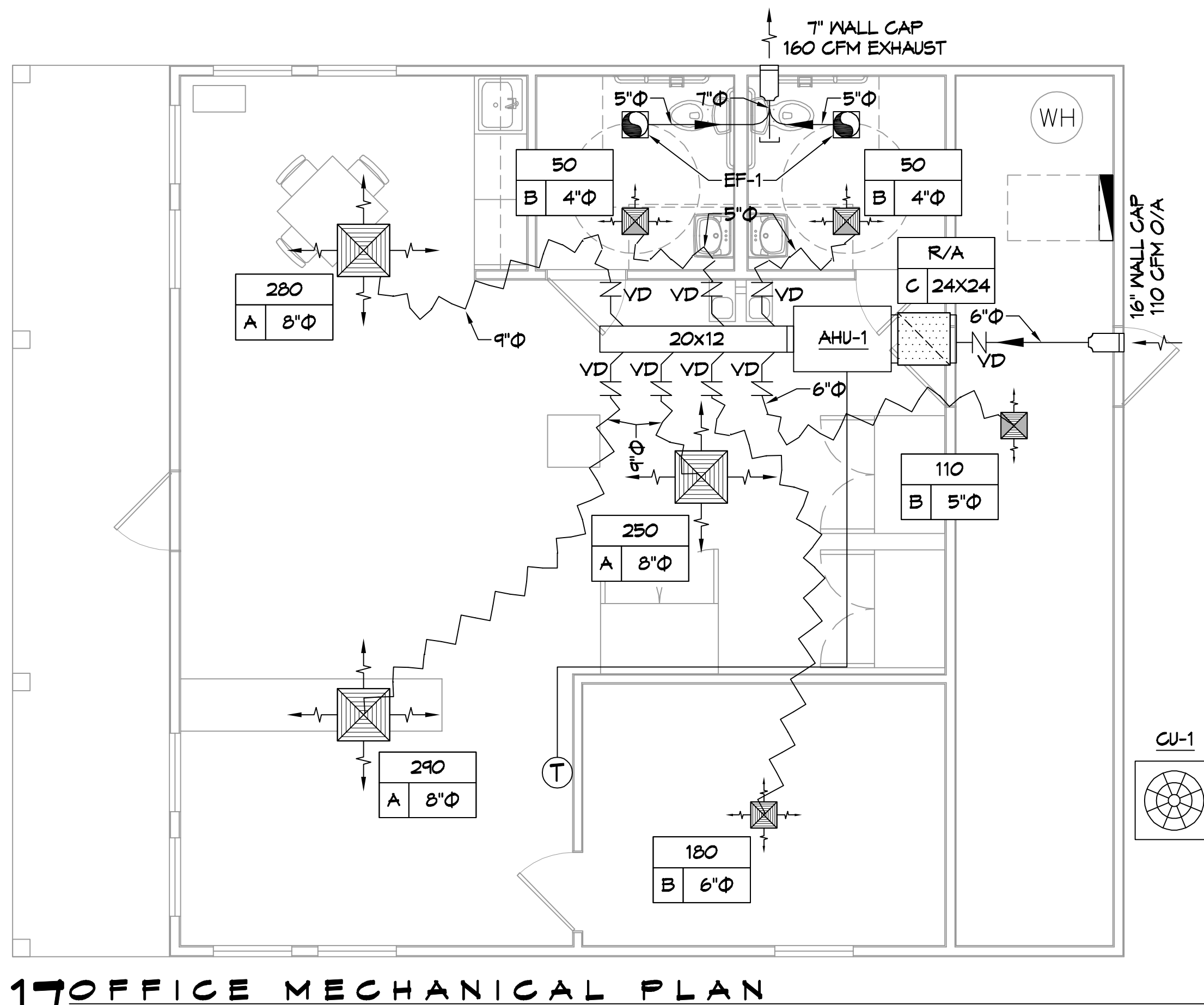


- ### GENERAL HVAC NOTES
- CONCEALED DUCTWORK TO BE GALVANIZED SHEET METAL WRAPPED WITH FIBROUS GLASS DUCT WRAP WITH FSK VAPOR BARRIER, MIN R-6. INSTALLED PER SMACNA STANDARDS. DUCT WORK IMMEDIATELY DOWNSTREAM FROM RTU SHALL BE LINED FOR SOUND ATTENUATION.
 - EXPOSED DUCTWORK TO BE GALVANIZED SHEET METAL LINED WITH FIBROUS GLASS DUCT LINER, MIN R-6. INSTALLED PER SMACNA STANDARDS.
 - ROUND FLEXIBLE DUCT TO BE UL-181, CLASS 1, AIR DUCT MATERIALS. DUCT SIZES SHOWN ARE CLEAR INSIDE DIMENSIONS.
 - IN ALL SYSTEMS OVER 2000 CFM AND LESS THAN 15,000 CFM, SMOKE DETECTORS SHALL BE INSTALLED IN ACCORDANCE WITH NFPA 72E IN THE RETURN DUCT DOWNSTREAM OF THE AIR HANDLING UNIT AND ALL FILTERS TO AUTOMATICALLY STOP THE FAN.
 - PROVIDE UL LISTED 125°F FIRESTAT IN RETURN AIR OF EACH SYSTEM UNDER 2000 CFM TO SHUT DOWN THE FAN IN THE EVENT OF FIRE.
 - PROVIDE UL RATED FIRE DAMPERS WHERE REQUIRED AT ALL DUCT PENETRATIONS OF FIRE-RATED ASSEMBLIES AND WHERE REQUIRED BY CODE, INCLUDING OUTSIDE AIR INTAKES AND EXHAUST FANS.
 - CONDENSATE DRAINS TO BE PVC PIPE RUN TO PLUMBERS P-TRAP WITHIN FIVE FEET OF AIR HANDLING UNITS.
 - ALL AIR HANDLING SYSTEMS TO BE BALANCED TO ASSURE PROPER AIR FLOWS PER PLANS.
 - ALL THERMOSTATS TO BE AUTOMATIC CHANGEOVER WITH HEAT SWITCH.
 - EXHAUST FAN SHALL BE CONTROLLED BY A SWITCH ON THE WALL IN THE SAME LOCATION AS LIGHT SWITCH(S). PROVIDE BACK DRAFT DAMPER.
 - PROVIDE AND INSTALL WATER PROOF GRILLE VENT IN PROPER ROOF LOCATION FOR PLUMBING FIXTURE EXHAUST.
 - ALL SUPPLY AIR VENTS SHALL BE EQUIPPED WITH AIR CONTROL DAMPERS AT THE REGISTER.
 - LOCATE OUTDOOR UNITS AS SHOWN ON ARCHITECTURAL DRAWINGS.
 - REFRIGERANT LINES SHALL BE SIZED BY UNIT MANUFACTURER AND INSTALLED ACCORDING TO MANUFACTURER'S INSTRUCTIONS.
 - FRESH AIR SHALL BE SUPPLIED TO EACH AIR HANDLER THROUGH EXTERIOR WALL DUCT SUPPLIED WITH A CONTROL DAMPER.
 - ALL ELECTRICAL, MECHANICAL, AND PLUMBING PENETRATING FIRE WALLS SHALL BE FIRE CAULKED. (PENETRATIONS THROUGH RATED CONSTRUCTION SHALL BE SEALED WITH A MATERIAL CAPABLE OF PREVENTING THE PASSAGE OF FLAMES AND HOT GASES WHEN TESTED IN ACCORDANCE WITH ASTM-E8-14).
 - ALL MECHANICAL SYMBOLS ARE DRAWN DIAGMATICALLY. CONTRACTOR TO VERIFY WITH OWNER LOCATIONS OF VENTS, DAMPERS, REGISTERS, ETC.
 - FLEXIBLE DUCTWORK LENGTH NOT TO EXCEED 16'-0".
 - REFER TO REFLECTED CEILING PLAN FOR FINAL GRILLE AND DIFFUSER LOCATIONS AND COORDINATE AS REQUIRED.
 - FINAL LOCATION OF TEMPERATURE CONTROLS TO BE COORDINATED WITH OWNER AT JOB SITE.
 - PROVIDE AND INSTALL SMOKE DETECTORS AS APPROVED BY LOCAL A.H.J.S. PLACE NEAR R/A AND S/A OPENINGS OF AHU AND PROVIDE, WITH ACCESS PANEL, WIRING BY ELECTRICAL CONTRACTOR.
 - FRESH AIR INTAKES ARE REQUIRED TO HAVE MOTORIZED OR GRAVITY DAMPERS TO SHUT OFF WHEN SYSTEM IS NOT RUNNING.
 - PROVIDE BIRD SCREENS AT ALL EXTERIOR MECHANICAL PENETRATIONS.
 - COORDINATE WALL MOUNTED THERMOSTAT LOCATIONS WITH ALL OWNER FURNISHED ITEMS EITHER WALL MOUNTED OR FLOOR MOUNTED AGAINST PARTITIONS. REFER TO ARCHITECTURAL DRAWINGS.
 - SEE ROOF PLAN FOR ALL ROOF PENETRATIONS.
 - PROVIDE MIN 18 GA GALVANIZED SHEET METAL TO BLANK-OFF GABLE VENTS WHERE INTAKE/EXHAUST DUCTS OCCUR.

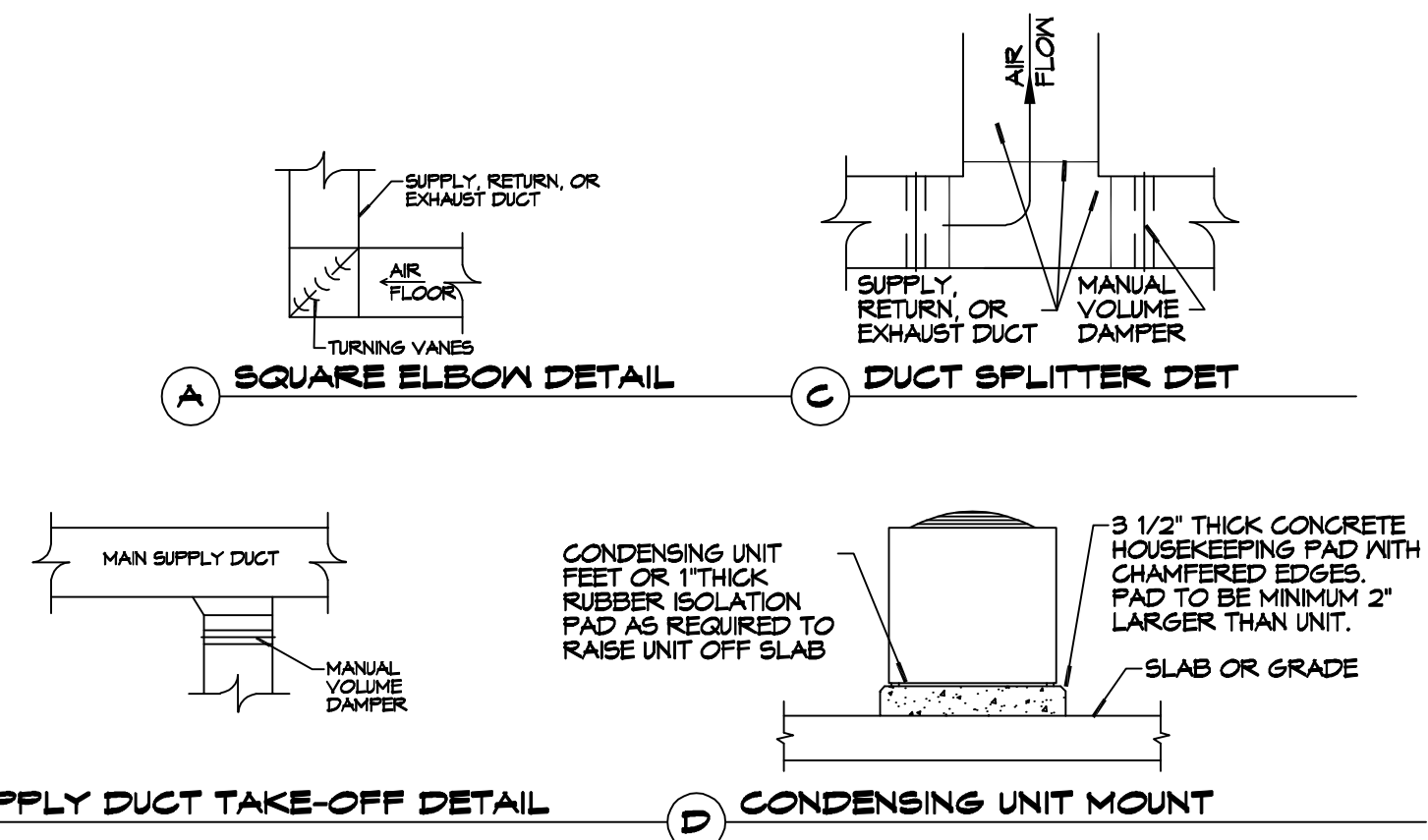
DAMMON ENGINEERING, INC.
 LOUISIANA & MISSISSIPPI
 Chief Engineer: Brian Westrich, PE
 554 Old Spanish Trail
 Slidell, LA 70458
 www.dammonengineering.com
 info@dammonengineering.com
 PH: 985.649.8832



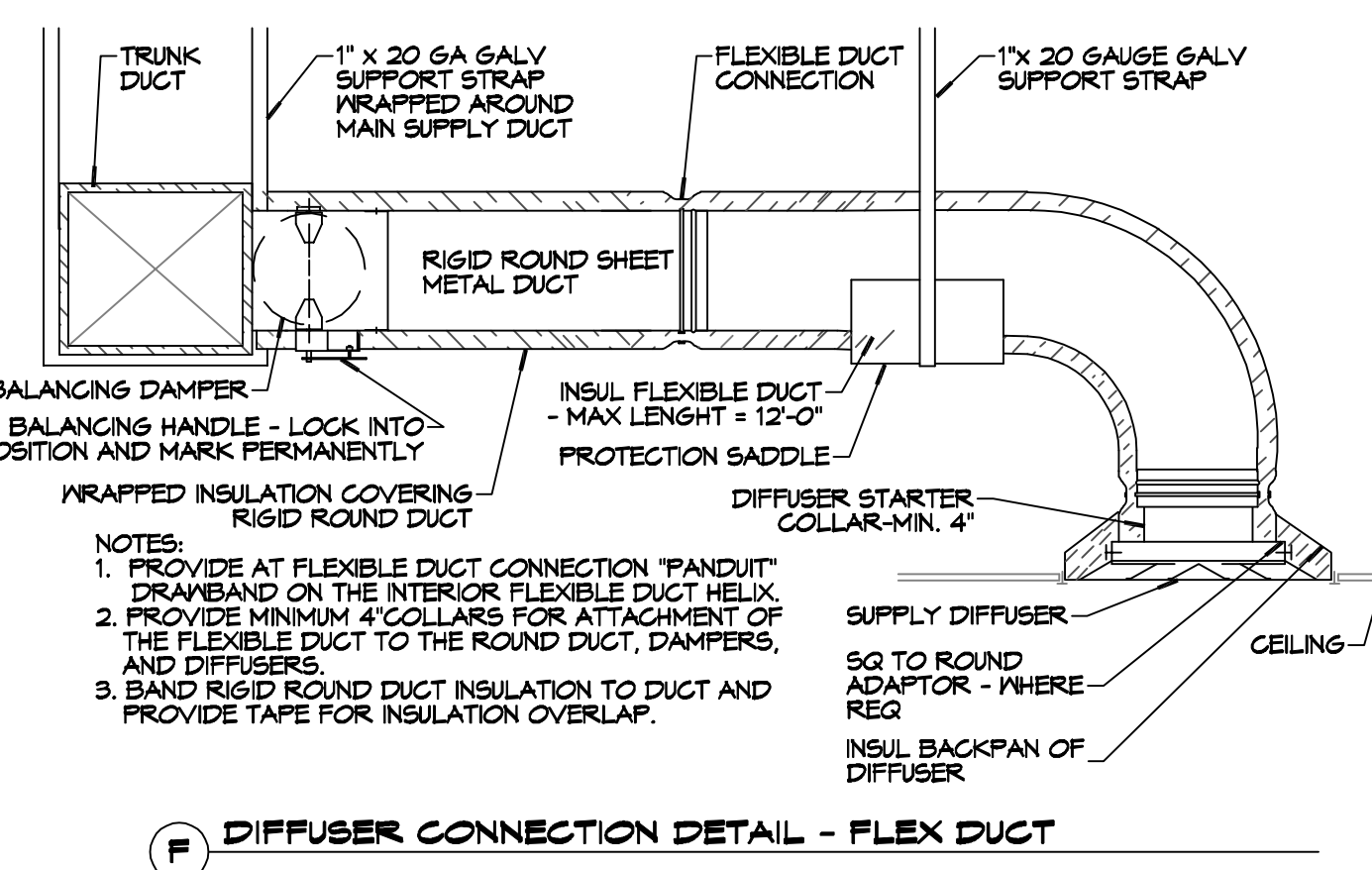
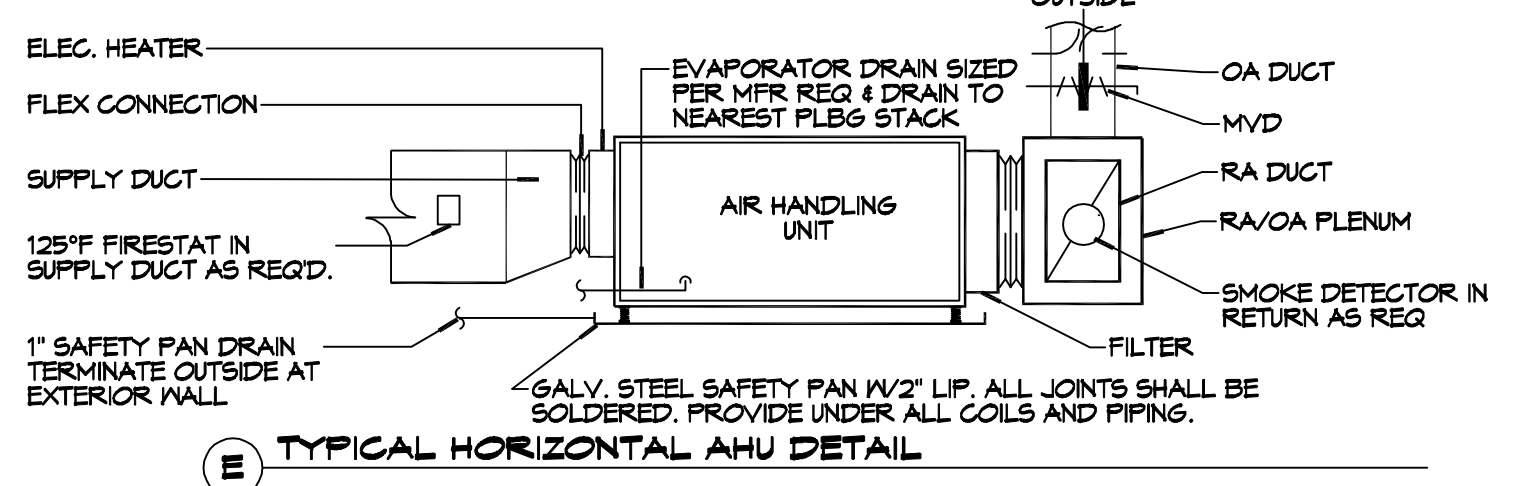
20 RESTROOM MECHANICAL PLAN
 SCALE: 1/4" = 1'-0"



17 OFFICE MECHANICAL PLAN
 SCALE: 1/4" = 1'-0"



TYPICAL DETAILS
 SCALE: N.T.S.



REVISIONS	DATE	DESCRIPTION

NEW RECREATIONAL RV SITE
EXIT 1 R.V. LLC.
 CLYDE WETTERS ROAD
 NICHOLSON, MS 38655
 JOB No: 2486 | DATE: 01-31-2022
 DRAWN BY: C4D | CHECKED BY: C4D

SHEET TITLE:
MECHANICAL PLAN
 DRAWING NUMBER:
M101
 SHEET No: 3 of 1