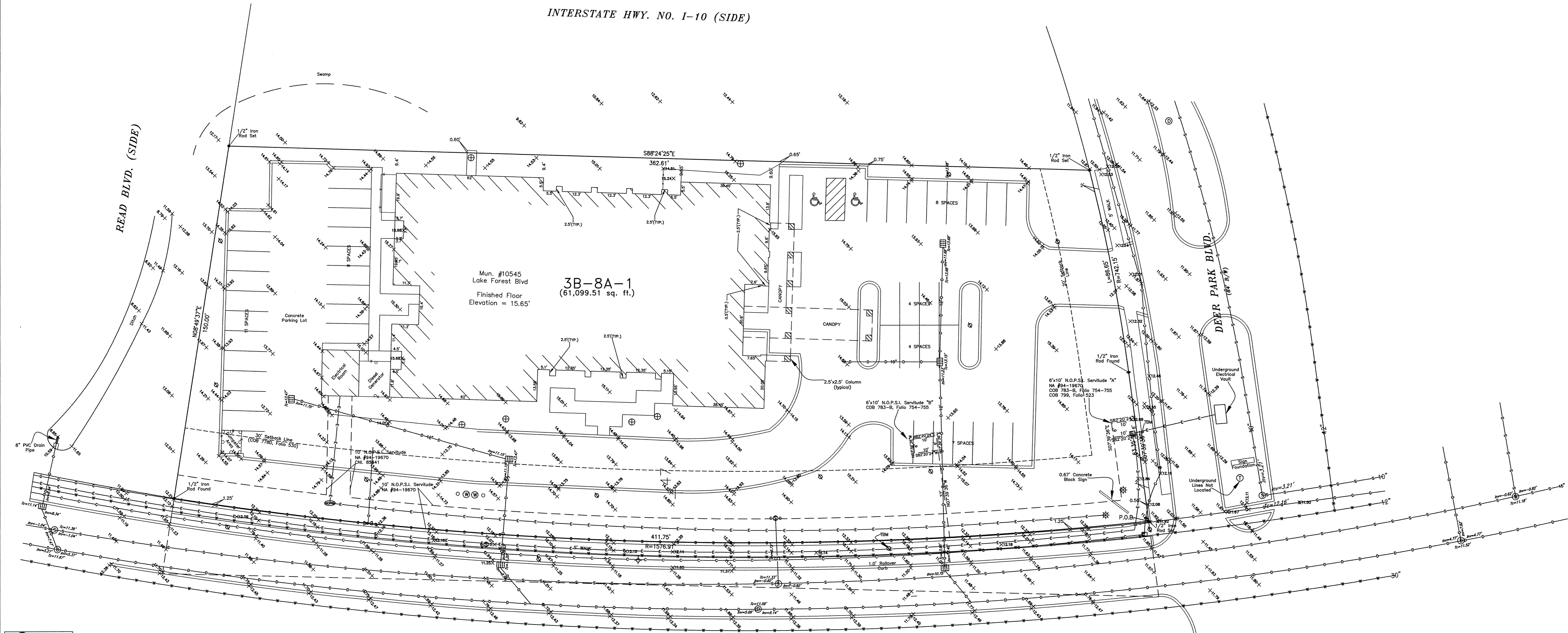


INTERSTATE HWY. NO. I-10 (SIDE)



**ONE 811**  
Louisiana One Call #130016279

THE LOCATIONS OF UNDERGROUND AND OTHER NONVISIBLE UTILITIES SHOWN HEREON HAVE BEEN DETERMINED FROM DATA EITHER FURNISHED BY THE AGENCIES CONTROLLING SUCH DATA AND/OR EXTRACTED FROM RECORDS MADE AVAILABLE TO US BY THE AGENCIES CONTROLLING SUCH RECORDS. WHERE FOUND, THE SURFACE FEATURES OF LOCATIONS ARE SHOWN. THE ACTUAL NONVISIBLE LOCATIONS MAY VARY FROM THOSE SHOWN HEREON. EACH AGENCY SHOULD BE CONTACTED RELATIVE TO THE PRECISE LOCATION OF ITS UNDERGROUND INSTALLATION PRIOR TO ANY RELIANCE UPON THE ACCURACY OF SUCH LOCATIONS SHOWN HEREON INCLUDING PRIOR TO EXCAVATION AND DIGGING.

- LEGEND**
- ⊕ = SEWER MANHOLE
  - ⊙ = WATER MANHOLE
  - ⊖ = DRAIN MANHOLE
  - ⊗ = S.C.B. MANHOLE
  - ⊠ = CATCH BASIN
  - ⊡ = FIRE HYDRANT
  - = SEWER LINE
  - = WATER LINE
  - = CABLE LINE
  - = DRAIN LINE
  - = GAS LINE
  - = FENCE
  - = CONCRETE CURB
  - ⊞ = ELECTRICAL METER
  - = OVERHEAD UTILITY LINE
  - = UNDERGROUND UTILITY LINE
  - ⊕ = UTILITY POLE
  - ⊙ = LIGHT POLE
  - ⊗ = LIGHT POLE
  - ⊠ = NOPS! Manhole

**CERTIFICATION**

I hereby certify to BOKF, NA dba Bank of Texas, its successors and/or assigns and that this map or plot and the survey on which it is based were made in accordance with the 2011 "Minimum Standard Detail Requirements for ALTA/ACSM Land Title Surveys" jointly established and adopted by ALTA and NSPS and includes Items 1, 2, 3, 4, 6(a), 6(b), 7(c), 7(b)(1), 7(c), 8, 9, 11, 13, 14, 16, 17, 18, 19, 20 and 21 of Table A thereof. The field work was completed on December 27, 2012.

Joseph M. Marques, PLS  
Lic. #4457  
Date of Survey: December 27, 2012

- GENERAL NOTES**
- This property is located in Flood Zone A4, base flood elevation = 16.43 Cairo Datum or -4.00 N.G.V.D. (M.S.L.), Community No. 225203 Panel No. 0105e, dated 03-01-1984.
  - The servitudes and restrictions shown on this survey are limited to those set forth in the description furnished us and there is no representation that all applicable servitudes and restrictions are shown hereon. The surveyor has made no title search or public record search in compiling the data for this survey.
  - Survey made in accord with plat by this office dated 09-09-1993.
  - The total number of parking spaces = 45, including 2 handicap parking spaces.
  - TBM: "X" Cut in north face of concrete pole 110' west of southeast corner of site. Elevation = 16.43 Cairo Datum (-4.00 NAVD88).
  - Reference Benchmark: GPS.
  - Elevations are shown to Cairo Datum. To convert to NAVD subtract 20.43.
  - Setbacks:  
Front 20'  
Side 0'  
Rear 0'  
Along lake forest blvd. 30'

**LEGAL DESCRIPTION**

THAT CERTAIN PIECE OR PORTION OF GROUND, TOGETHER WITH ALL THE BUILDINGS AND IMPROVEMENTS THEREON, AND ALL RIGHTS, WAYS, PRIVILEGES, SERVITUDES, ADVANTAGES, AND APPURTENANCES THEREUNTO BELONGING OR IN ANYWISE APPERTAINING, SITUATED IN THE THIRD MUNICIPAL DISTRICT OF THE CITY OF NEW ORLEANS, IN THAT PART THEREOF NOW KNOWN AS DEER PARK, BEING A RESUBDIVISION OF PARCEL 3B-8A OF THE LAKRATT TRACT, SECTION 24, ALL IN ACCORDANCE WITH A PLAN OF RESUBDIVISION BY UNIVERSAL LAND SURVEYORS, INC., DATED AUGUST 20, 1985, APPROVED BY THE CITY PLANNING COMMISSION ON OCTOBER 3, 1985, REGISTERED IN COB 799, FOLIO 523, AND ACCORDING TO WHICH SAID PIECE OR PORTION OF GROUND IS DESIGNATED AS LOT 3B-8A-1, AND IS MORE FULLY DESCRIBED AS FOLLOWS:

COMMENCING AT THE INTERSECTION OF THE NORTH RIGHT OF WAY LINE OF LAKE FOREST BOULEVARD AND THE WEST RIGHT OF WAY LINE OF DEER PARK BOULEVARD, THE POINT OF BEGINNING; FROM SAID POINT OF BEGINNING, MEASURE ALONG THE ARC OF A CURVE TO THE RIGHT HAVING A RADIUS OF 1,576.91 FEET, A DISTANCE OF 411.75 FEET ALONG THE NORTH RIGHT OF WAY LINE OF LAKE FOREST BLVD. TO A POINT; THENCE NORTH 08 DEGREES 49 MINUTES 37 SECONDS EAST, A DISTANCE OF 150 FEET TO A POINT; THENCE SOUTH 88 DEGREES 24 MINUTES 25 SECONDS EAST, A DISTANCE OF 362.61 FEET TO A POINT ON THE WEST RIGHT OF WAY LINE OF DEER PARK BLVD.; THENCE MEASURE ALONG THE WEST RIGHT OF WAY LINE OF DEER PARK BLVD., BEING A CURVE TO THE RIGHT, HAVING A RADIUS OF 742.15 FEET AN ARC LENGTH OF 86.65 FEET, TO A POINT; THENCE CONTINUE ALONG THE WEST RIGHT OF WAY LINE OF DEER PARK BLVD., SOUTH 07 DEGREES 39 MINUTES 36 SECONDS EAST, A DISTANCE OF 63.35 FEET TO THE POINT OF BEGINNING AND CONTAINING 61,099.51 SQUARE FEET.

NOTE: Improvements may not be to scale for clarity. The dimensions shown prevail over scale.

BEARING BASE: PLAN BY UNIVERSAL LAND SURVEYORS, INC., DATED AUGUST 20, 1985

ALTA/ACSM LAND TITLE & TOPOGRAPHICAL SURVEY OF PARCEL 3B-8A DEER PARK THIRD DISTRICT CITY OF NEW ORLEANS ORLEANS PARISH, LOUISIANA CERTIFY THAT THIS SURVEY AND PLAN WAS PREPARED BY ME OR BY THOSE UNDER MY DIRECT SUPERVISION. MADE AT THE REQUEST OF: MDG AIRPORT II, LP		<b>DADING, MARQUES &amp; ASSOCIATES, LLC</b>  P.O. BOX 790 METAIRIE, LA. 70004 (504) 834-0200 SURVEYOR	
THE SERVITUDES AND RESTRICTIONS SHOWN ON THIS SURVEY ARE LIMITED TO THOSE SET FORTH IN THE DESCRIPTION FURNISHED US AND THERE IS NO REPRESENTATION THAT ALL APPLICABLE SERVITUDES AND RESTRICTIONS ARE SHOWN HEREON. THE SURVEYOR HAS MADE NO TITLE SEARCH OR PUBLIC RECORD SEARCH IN COMPILING THE DATA FOR THIS SURVEY.		THIS SURVEY MEETS THE MINIMUM REQUIREMENTS FOR A CLASS "B" SURVEY ACCORDING TO THE "LOUISIANA MINIMUM STANDARDS FOR PROPERTY BOUNDARY SURVEYS."	
DATE:	SCALE:	DRAWN BY:	CHECKED BY:
12-27-2012	1" = 20'	R.M.S.	J.M.M.
JOB NO.:		SHEET:	
49220		1 OF 1	

PLANS: 01-23-2013