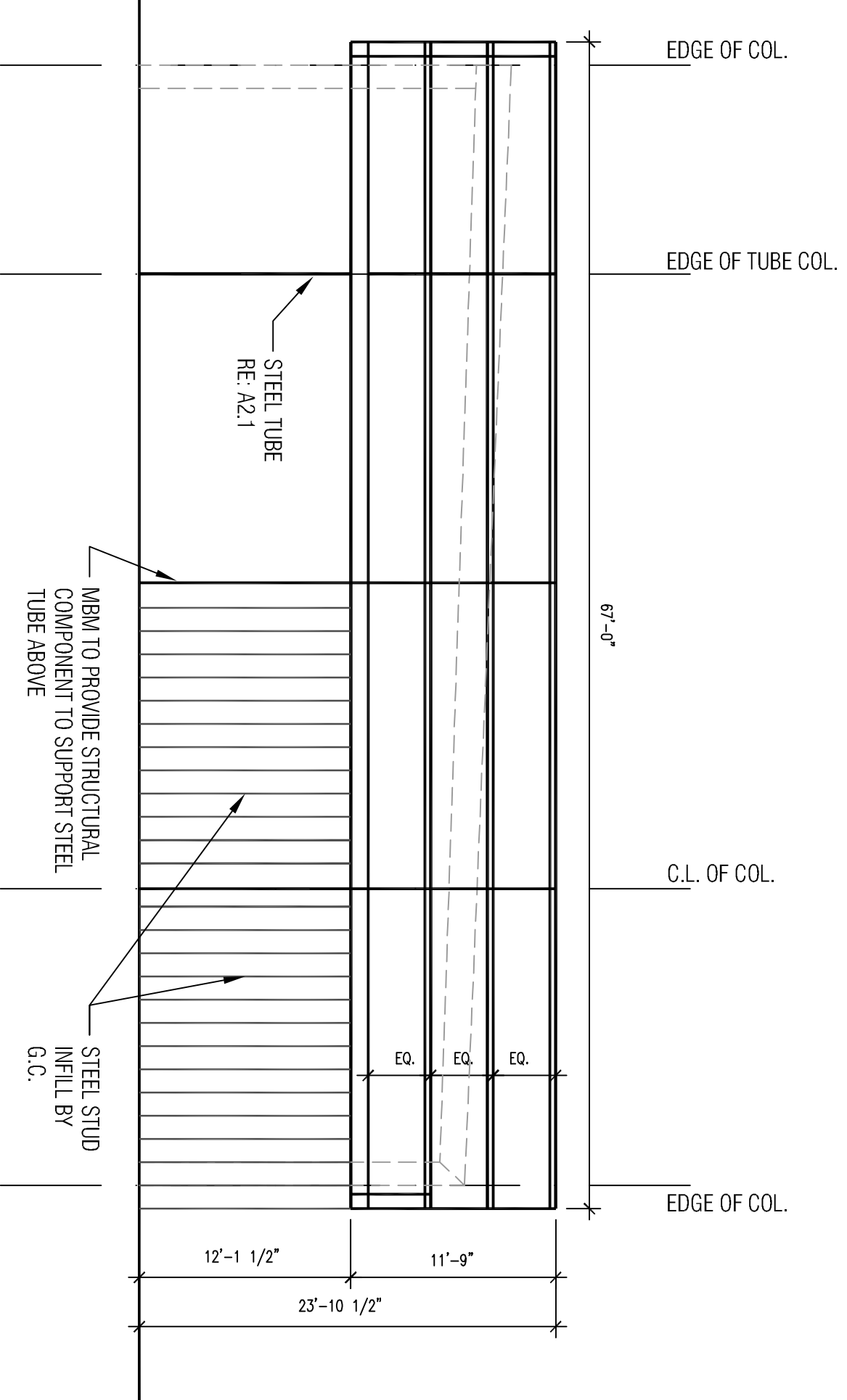
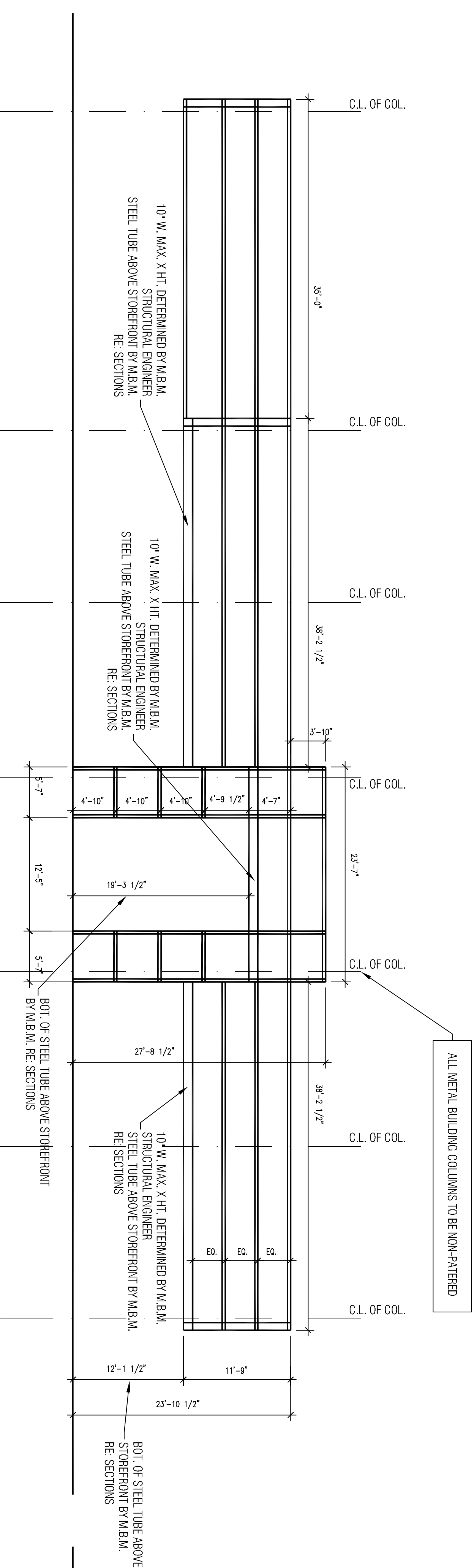
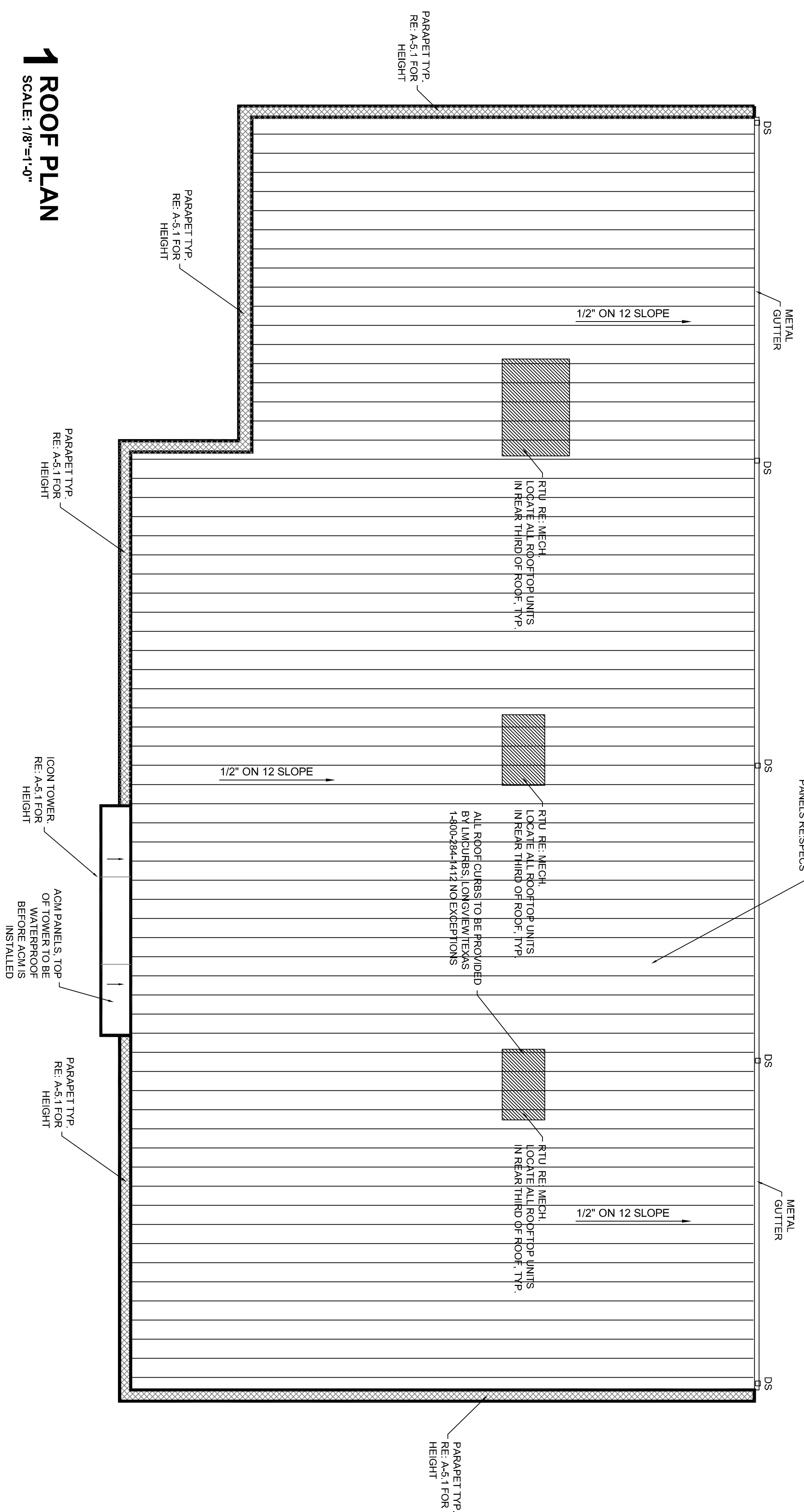


- ROOFING NOTES**
- 1) METAL ROOF TO BE MRCI 24" WIDE DOUBLE-LAP 22 GAUGE IN STANDARD COLOR OR EQUAL.
  - 2) METAL BUILDING MFR. TO USE DEFLECTION FACTOR OF 1.0
  - 3) METAL BUILDING MFR. TO USE DEFLECTION PARAMETERS COMMON TO A BUILDING OF THIS TYPE AND APPROVED BY CODE.
  - 4) METAL BUILDING MFR. HAS NO LIMITATION FOR SIZE OF COLUMNS IN THIS PROJECT.
  - 5) METAL BUILDING MFR. SHALL BE RESPONSIBLE FOR CODE COMPLIANT PURLIN SPACING AS RELATED TO THIS PARTICULAR ROOFING TYPE.
  - 6) M.B.M. TO COORDINATE SIZE AND WEIGHT OF ROOFTOP UNITS AND PROVIDE ALL STRUCTURE TO SUPPORT.



**REVIEW SET**

A Dealership Renovation For:  
**Lakeshore Dodge Chrysler Jeep Ram**  
330 E Howze Beach Rd.  
Slidell, Louisiana 70461

Job No:  
Date: 5-6-16  
Drawn: msl

**REVISIONS**

**CRESS & LOPRESTO ARCHITECTS L.L.C.**  
A PROFESSIONAL ARCHITECTURAL COMPANY  
10606 COURSEY BLVD., STE. A  
BATON ROUGE, LOUISIANA 70816  
(225) 930-6040 FAX (225) 930-6045



Sheet No. **A-7.1**  
Of