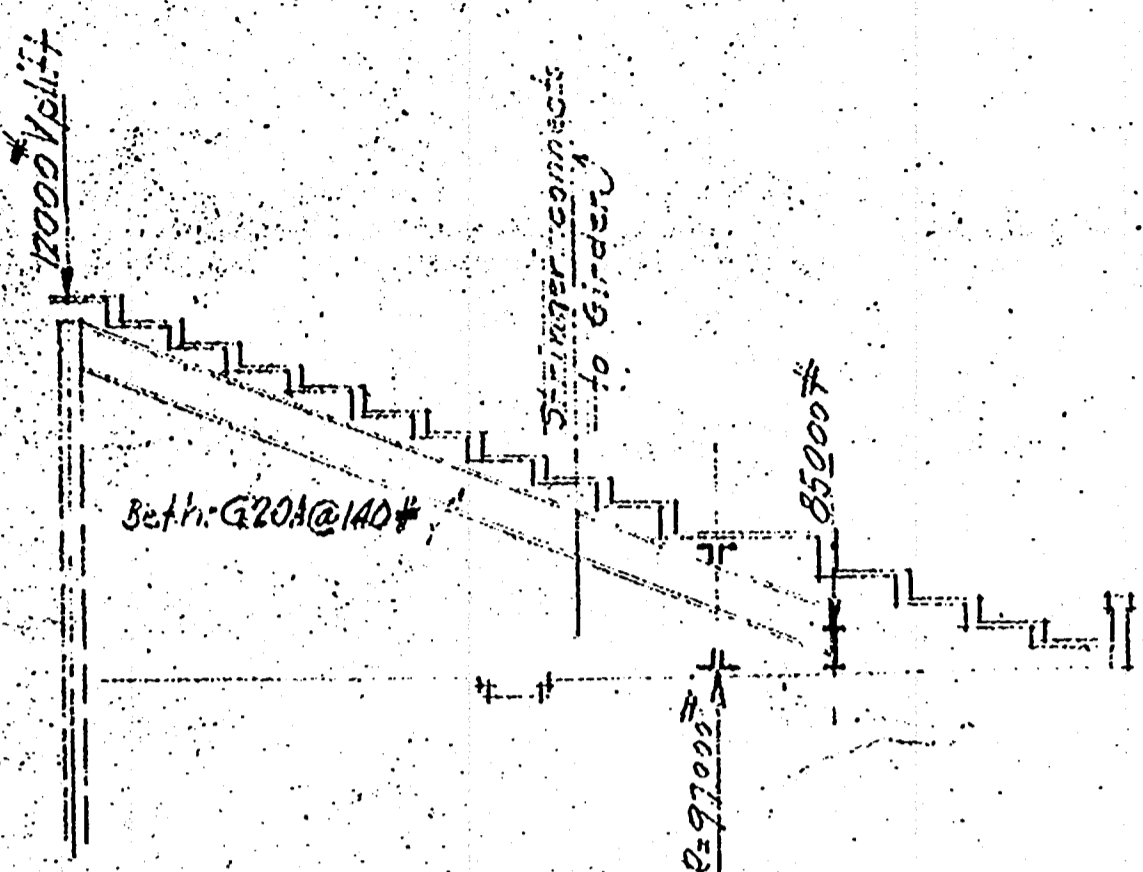
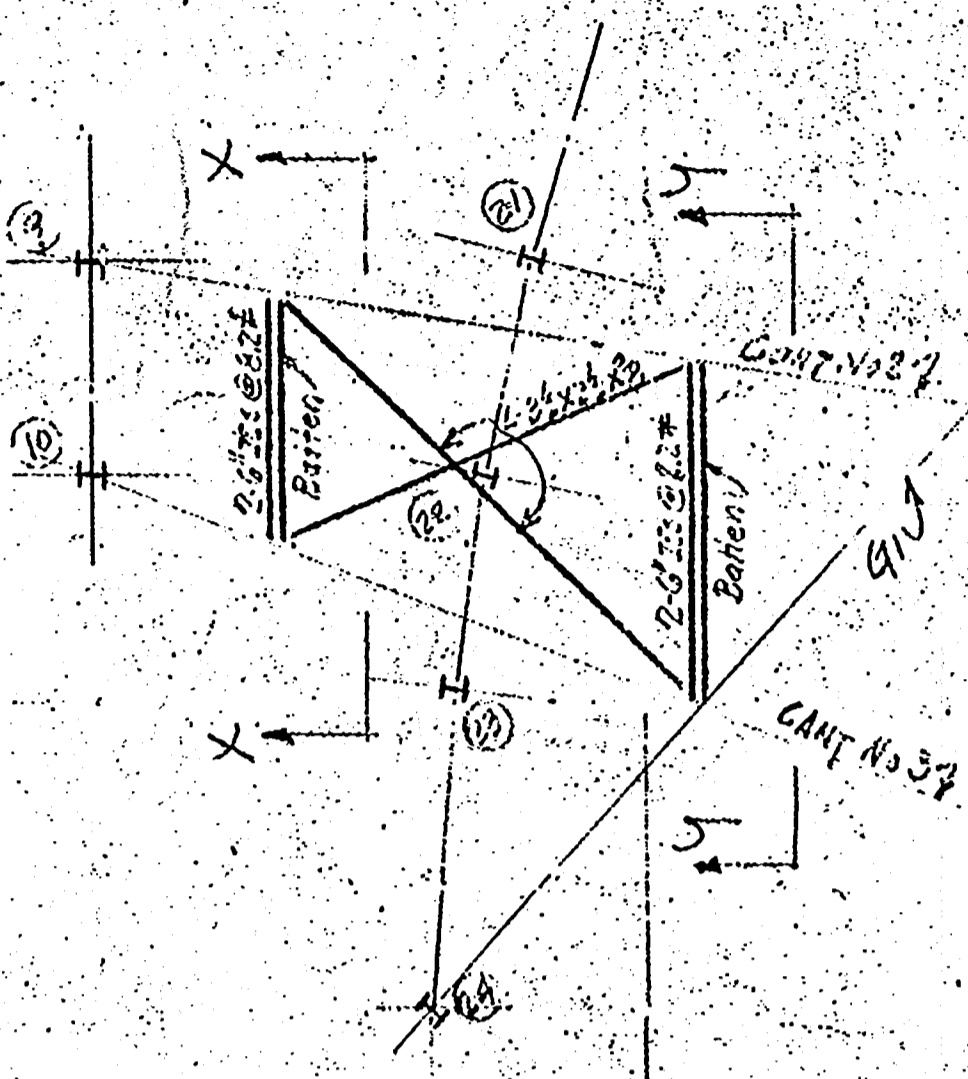


CANTILEVER TRUSS NO. 2

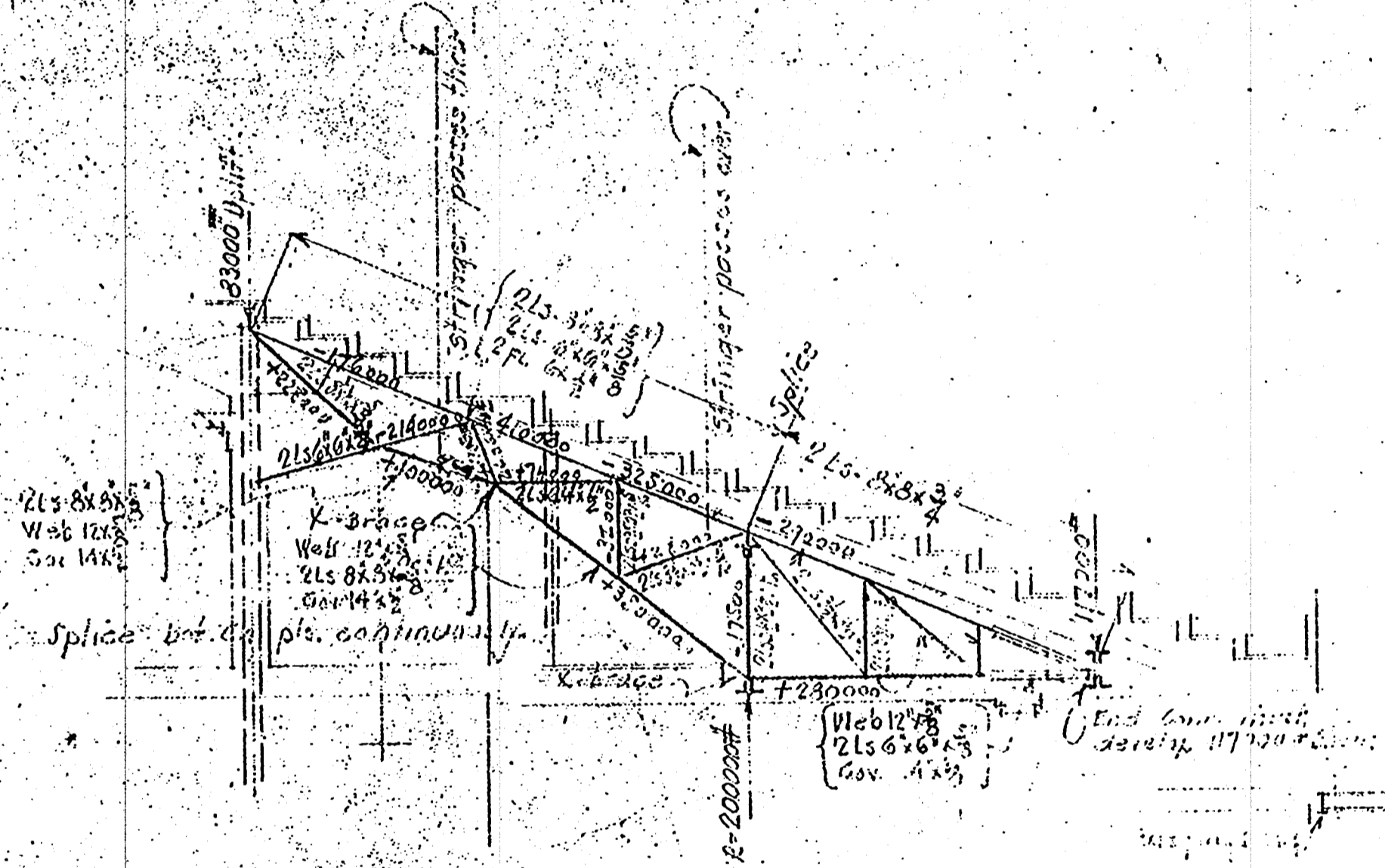


CANTILEVER GIRDER NO. 1

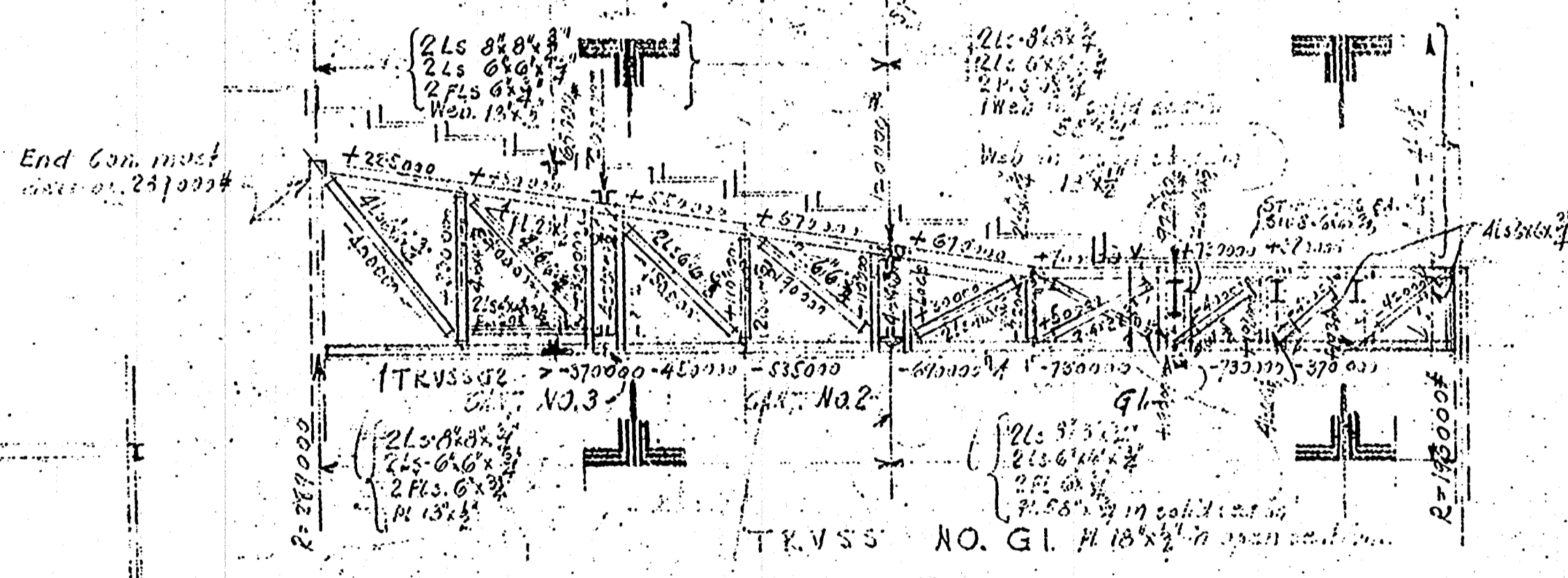


FRAMING IS SYMMETRICAL ABOUT X-Y FOR MEN. SHOWN

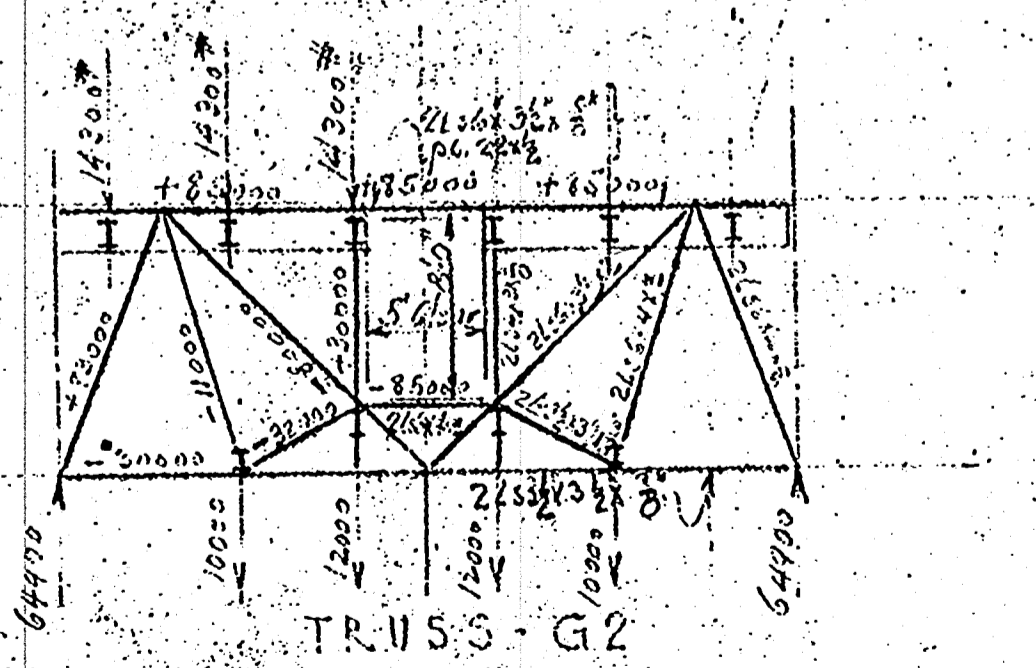
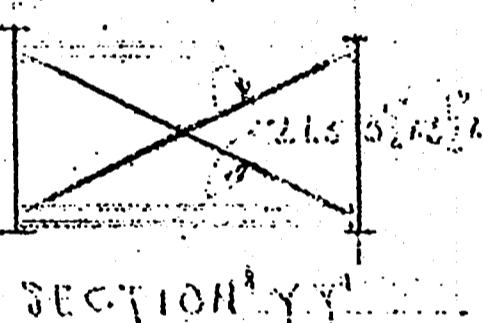
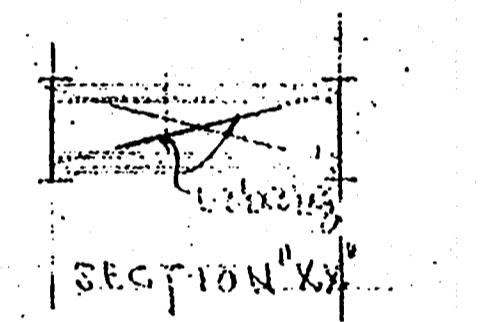
SWAY BRACING IN PLANE OF BOTH TOP & BOTTOM FLANGES OF CANT. TRUSSES NO. 3 & NO. 37



CANTILEVER TRUSS NO. 3



TRUSS NO. G1



TRUSS G2

SECTION ON A-A

TRUSS FRAMING (DETAIL) 11/25

CANAL STREET THEATRE
 FOR
 SAENGER THEATRES INC.
 CANAL, N. PAMPART, JEFFERSON, N. JOHNSON STREETS,
 NEW ORLEANS, LA.

REVISED
 EMILE WEIL ARCHITECTS
 WHITNEY CENTRAL BUILDING
 NEW ORLEANS, LA.

PLAN
 DATE 11/25

894 14