

**THE SAENGER
THEATRE RENEWAL
PROJECT**

142 North Rampart Street
New Orleans, LA

Client
Saenger Theatre Redevelopment Company
200 West Loop South, Suite
1040 Houston TX 77027

Architect
MARTINEZ+JOHNSON
ARCHITECTURE

1412 Eye St., NW
Washington, DC 20005
202.333.4480

Structural Engineer
Shawn J. Franke, P.E.
549heimer Road, San
Antonio TX 78232
210.979.7900

Theatre Consultant
Schuler Shook
123 Third Street North #210
Minneapolis, MN 55401
612.333.5555

Acoustical Engineer
Akustiks
93 North Main Street South
Norwalk, CT 06884
202.299.1904

MEP Engineer
JBA Consulting Engineers, Inc.
3525 N. Causeway Blvd. Suite
500 Metairie, LA 70002
504.830.0139

Civil Engineer
Linfield, Hunter, & Junius, Inc.
3608 18th Street Suite 200
Metairie, LA 70002
504.833.5300

Architectural Historian
EHT Traceries, Inc.
1121 Fifth Street NW
Washington, DC 20001
202.393.1199

THESE DRAWINGS, SPECIFICATIONS, AND OTHER DOCUMENTS, COLLECTIVELY, THE "DOCUMENTS", INCLUDING WITHOUT LIMITATION ELECTRONIC VERSIONS THEREOF AND THE IDEAS, DESIGNS, AND ARRANGEMENTS REPRESENTED THEREBY, ARE AND SHALL REMAIN THE PROPERTY OF MARTINEZ & JOHNSON ARCHITECTURE PC, AS DEFINED BY APPLICABLE CONTRACTUAL AGREEMENTS ("THE AGREEMENTS"), AND AS PROTECTED BY THE COPYRIGHT STATUTES OF THE UNITED STATES. USE OF THE DOCUMENTS SHALL BE STRICTLY LIMITED TO THE PROJECT FOR WHICH THEY WERE PREPARED AND DEVELOPED ("THE PROJECT") FOR THE TERM OF THE AGREEMENTS. NO PART OF THE DOCUMENTS SHALL BE COPIED, DISCLOSED TO OTHERS, OR USED IN CONNECTION WITH ANY OTHER WORK OR PROJECT, OR BY ANY OTHER PERSONS FOR ANY PURPOSES, OTHER THAN THE COMPLETION OF THE PROJECT, WITHOUT THE SPECIFIC WRITTEN AUTHORIZATION OF MARTINEZ & JOHNSON ARCHITECTURE PC. THE BORROWING, OPENING, OR VIEWING OF ELECTRONIC VERSIONS OF THE DOCUMENTS OR VISUAL CONTACT WITH ANY PRINTED FORM THEREOF SHALL CONSTITUTE CONCLUSIVE EVIDENCE OF ACCEPTANCE OF THESE RESTRICTIONS.

7502

DATE:	No.:	ISSUE:
02.19.10	1	PERMIT SET
04.02.10	2	GMP CONTRACT SET

DATE:	No.:	REVISION:
11.11.10		CONTRACT SET

SHEET TITLE:
WIRING DIAGRAMS

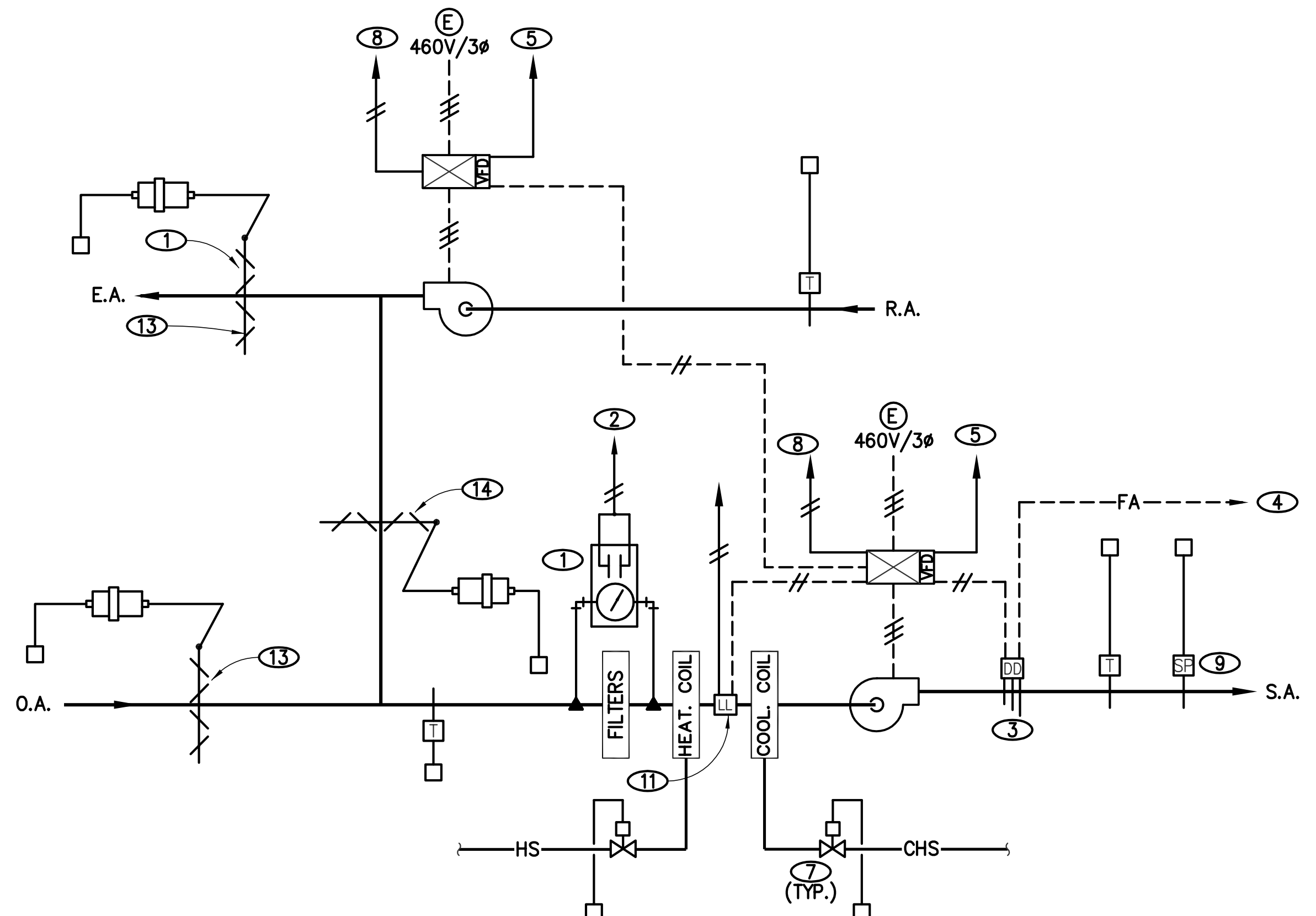
M-0.08

NOTES

- ① DWYER MAGNEHELIC FILTER GAUGE. FURN. W/ 0-2" W.C. RANGE, RED FLAG INDICATOR, VENT VALVES, PITOT TUBES, TUBING, DIFF. PRESSURE SWITCH FOR INTERFACE W/ EMCS (DIRTY FILTER ALARM).
- ② EMCS INTERFACE FOR DIRTY FILTER ALARM.
- ③ PHOTOELECTRIC TYPE DUCT SMOKE DETECTOR TO DENERGIZE FAN & ANNUNCIATE AT FIRE ALARM UPON SENSING SMOKE.
- ④ TO FIRE ALARM SYSTEM.
- ⑤ SPEED CONTROL SIGNAL VIA EMCS.
- ⑥ CUSTOM CONTROL PANEL WITH 6 SELECTABLE CUSTOM PROGRAMMABLE FUNCTIONS PER OWNERS REPRESENTATIVE'S REQUIREMENTS. FURNISH INDICATING LIGHTS PER FUNCTION.
- ⑦ 2-WAY MODULATING CONTROL VALVE. SELECT FOR MAX. 5 PSIG WPD AT SCHEDULE FLOW & 50 PSIG SHUT-OFF.
- ⑧ START/STOP VIA EMCS.
- ⑨ STATIC PRESSURE TRANSMITTER.
- ⑩ LOCATE AT STAGE MANAGER'S POSITION-COORDINATE EXACT LOCATION & INTERFACE WITH OWNER'S REPRESENTATIVE.
- ⑪ LOW LIMIT TEMPERATURE CONTROL TO DEENERGIZE FAN & ANNUNCIATE AT FRONT END EMCS UPON SENSING IMPENDING FREEZE CONDITION (FIELD ADJUSTABLE).
- ⑫ TO/ FROM OTHER DDC PANELS & CONTROLLERS.
- ⑬ DAMPER SHALL FAIL CLOSED.
- ⑭ DAMPER SHALL FAIL OPEN.
- ⑮ INTERLOCK W/ AIR HANDLING UNIT FAN STARTER.

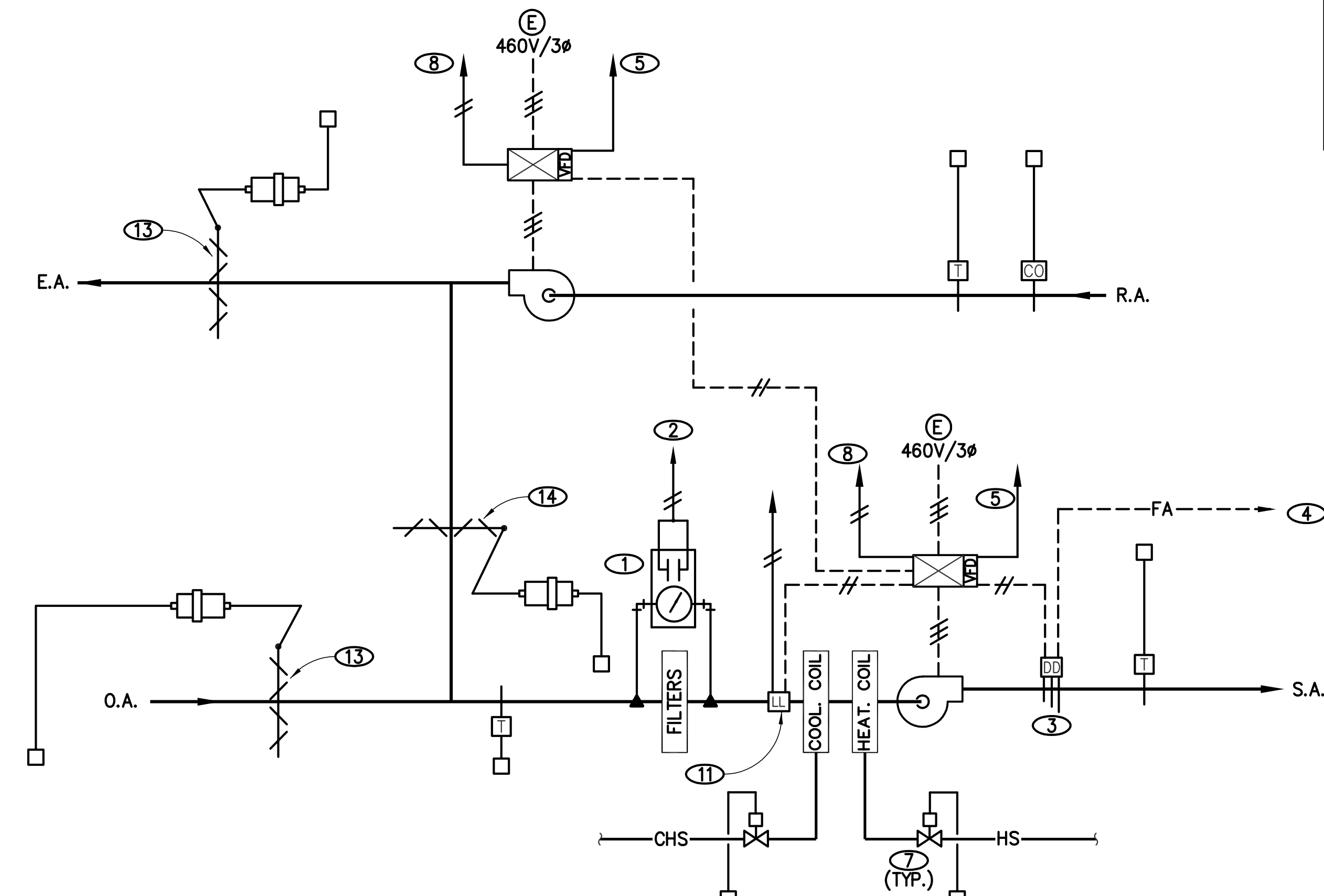
AUTO. TEMP CONTROL / EMCS LEGEND

- SPACE SENSOR W/ PLUG-IN PORT.
- PROVIDED BY DIVISION 16.
- CIRCUIT BREAKER (E)
- O.L. OVERLOAD PROTECTION (E)
- CONDUIT & POWER WIRING (NO. OF HASH MARKS INDICATE QUANTITY OF WIRES). (E)
- DISCONNECT SWITCH (E)
- CONDUIT & LOW VOLTAGE (SIGNAL) WIRING PROVIDED BY DIV.15, ATC/EMCS SECTION (NO. OF HASH MARKS INDICATE WIRE QUANTITY).
- MAGNETIC STARTER W/ PILOT LIGHT & HOA SWITCH. (E)
- VARIABLE FREQUENCY DRIVE, FURN. BY DIVISION 15, INSTALLED & WIRED BY DIVISION 16.
- ELECTRIC/ ELECTRICAL TERMINAL
- DIFFERENTIAL PRESSURE TRANSMITTER
- TEMPERATURE SENSOR/TRANSMITTER
- PRESSURE TRANSMITTER
- STATIC PRESSURE TRANSMITTER
- CARBON DIOXIDE SENSOR/TRANSMITTER
- ELECTRIC/ELECTRONIC TWO-WAY CONTROL VALVE (50# ΔP)
- A.T.C. AUTOMATIC TEMPERATURE CONTROLS
- D.D.C. DIRECT DIGITAL CONTROL
- E.M.C.S. ENERGY MANAGEMENT AND CONTROL SYSTEM
- N.O. NORMALLY OPEN
- N.C. NORMALLY CLOSED
- XFMR TRANSFORMER
- H-O-A HAND-OFF-AUTO SWITCH
- S/S START/ STOP SIGNAL VIA EMCS
- DUCT MOUNTED PHOTOELECTRIC TYPE ADDRESSABLE SMOKE DETECTOR (FURN. WIRED & TESTED BY DIVISION 16, INSTALLED BY DIV. 15).
- DO DIGITAL OUTPUT
- DI DIGITAL INPUT
- AO ANALOG OUTPUT
- AI ANALOG INPUT
- U.L. LISTED CURRENT STATUS SWITCH (HAWKEYE SERIES 705 OR 708, AS REQ'D.) (PROVIDED BY DIVISION 15, ATC/EMCS SECTION, COORD. W/ DIVISION 16 SECTION.)



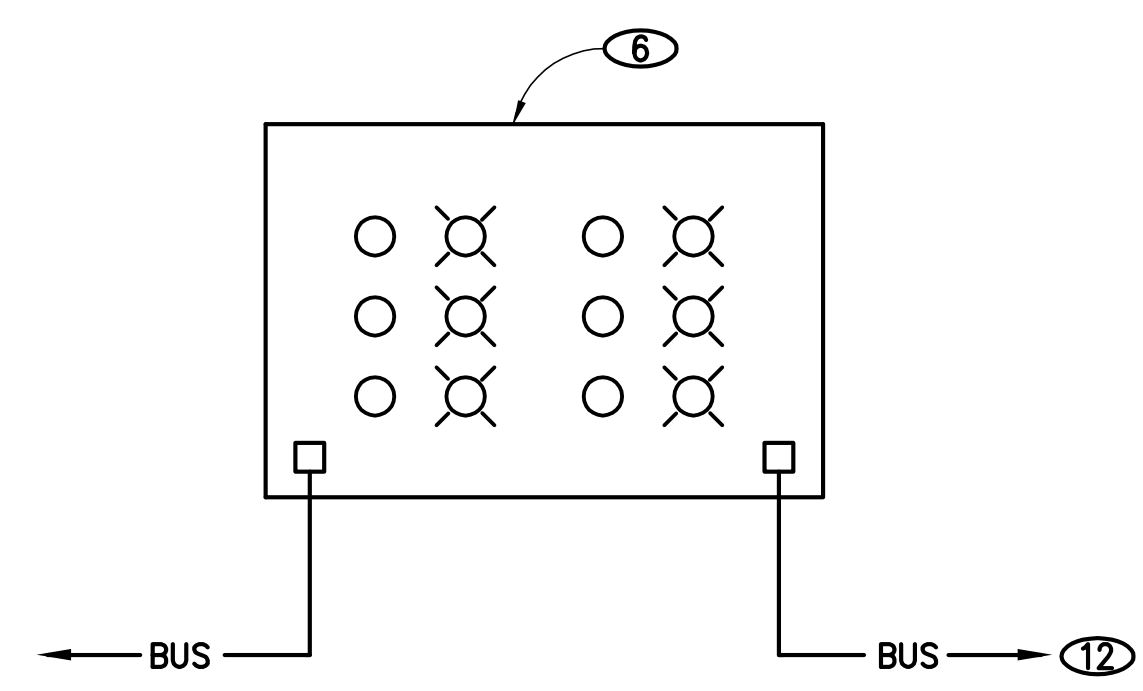
VAV AIR HANDLING SYSTEM

(AH 2) (AH 6)



SINGLE ZONE CV AIR HANDLING SYSTEM

(AH 1) (AH 5)



STAGE MANAGERS CONTROL ⑩

AUTO. TEMPERATURE CONTROL/ EMCS WIRING DIAGRAMS

NO SCALE

1
MO.08

RE-NUMBERED SHEET