

**THE SAENGER
THEATRE RENEWAL
PROJECT**

142 North Rampart Street
New Orleans, LA

Client
Saenger Theatre Redevelopment Company
200 West Loop South, Suite
1040 Houston TX 77027

Architect
**MARTINEZ+JOHNSON
ARCHITECTURE**

1412 Eye St., NW
Washington, DC 20005
202.333.4480

Structural Engineer
Shawn J. Franke, P.E.
549 Hermit Road, San
Antonio TX 78232
210.979.7900

Theatre Consultant
Schuler Shook
123 Third Street North #210
Minneapolis, MN 55401
612.333.5330

Acoustical Engineer
Akustiks
93 North Main Street South
Norwalk, CT 06584
202.299.1904

MEP Engineer
JBA Consulting Engineers, Inc.
3525 N. Causeway Blvd. Suite
500 Metairie, LA 70002
504.830.0139

Civil Engineer
Linfield, Hunter, & Junius, Inc.
3608 18th Street Suite 200
Metairie, LA 70002
504.833.5330

Architectural Historian
EHT Traceries, Inc.
1121 Fifth Street NW
Washington, DC 20001
202.393.1199

THESE DRAWINGS, SPECIFICATIONS, AND OTHER DOCUMENTS, COLLECTIVELY, THE "DOCUMENTS" INCLUDING WITHOUT LIMITATION ELECTRONIC VERSIONS THEREOF AND THE IDEAS, DESIGNS, AND ARRANGEMENTS REPRESENTED THEREBY, ARE AND SHALL REMAIN THE PROPERTY OF MARTINEZ+JOHNSON ARCHITECTURE, P.C. AS DEFINED BY APPLICABLE CONTRACTUAL AGREEMENTS (THE "AGREEMENTS") AND AS PROTECTED BY THE COPYRIGHT STATUTES OF THE UNITED STATES. USE OF THE DOCUMENTS SHALL BE STRICTLY LIMITED TO THE PROJECT FOR WHICH THEY WERE PREPARED AND DEVELOPED (THE "PROJECT") FOR THE TERMS OF THE AGREEMENTS. NO PART OF THE DOCUMENTS SHALL BE COPIED, DISCLOSED TO OTHERS, OR USED IN CONNECTION WITH ANY OTHER WORK OR PROJECT, OR BY ANY OTHER PERSONS FOR ANY PURPOSES, OTHER THAN THE COMPLETION OF THE PROJECT, WITHOUT THE SPECIFIC WRITTEN AUTHORIZATION OF MARTINEZ+JOHNSON ARCHITECTURE, P.C. THE BORROWING, OPENING, OR VIEWING OF ELECTRONIC VERSIONS OF THE DOCUMENTS OR VISUAL CONTACT WITH ANY PRINTED FORM THEREOF SHALL CONSTITUTE CONCLUSIVE EVIDENCE OF ACCEPTANCE OF THESE RESTRICTIONS.

7502

DATE:	No.:	ISSUE:
02.19.10	1	PERMIT SET
04.02.10	2	GMP CONTRACT SET

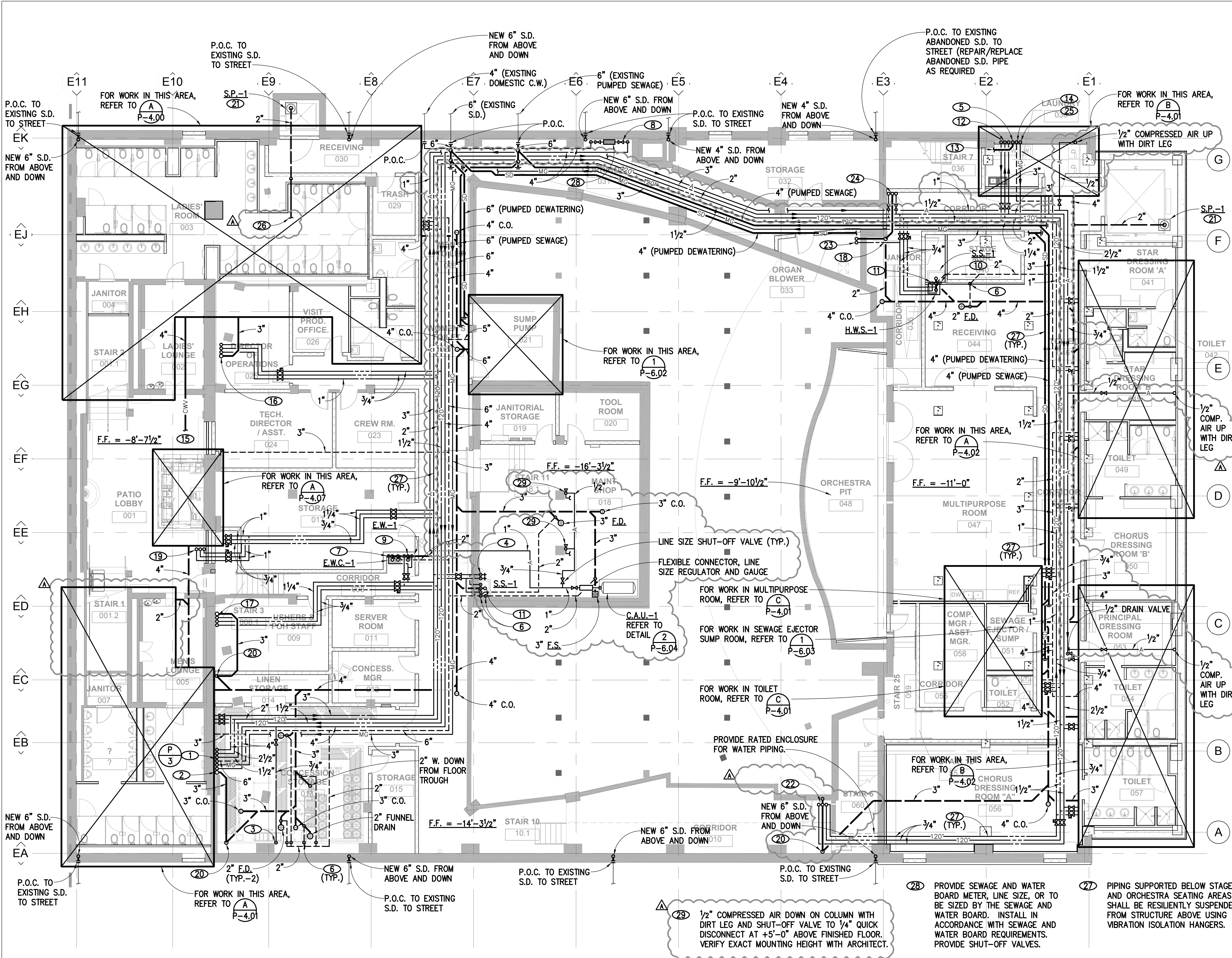
DATE:	No.:	REVISION:
11.11.10		CONTRACT SET

SHEET TITLE:
**THEATRE - BASEMENT
LEVEL PLAN**

P-1.00

NOTES

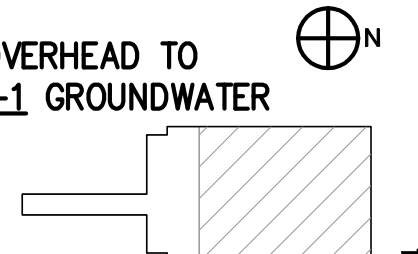
- ① 6" V., 3" M.G., 4" C.W. AND 1 1/2" H.W.R. UP AND 4" C.W., 2 1/2" H.W. AND 2 1/2" W. FROM ABOVE.
- ② 3" W. FROM ABOVE.
- ③ 3/4" C.W. DOWN TO SODA BAG-IN-BOX.
- ④ 3/4" H. & C.W. DOWN TO H. & C.W. H.B.'s AT +18" ABOVE FINISHED FLOOR.
- ⑤ 4" W. FROM ABOVE.
- ⑥ 2" V. UP FROM BELOW FLOOR.
- ⑦ 2" W. DOWN WITH W.C.O., 2" V. UP AND 1/2" C.W. DOWN TO EACH BUBBLER OF E.W.C.-1.
- ⑧ PROVIDE LINE SIZE SHUT-OFF VALVE AND BACKFLOW PREVENTER.
- ⑨ 2" W. DOWN, 2" V. UP AND 3/4" H. & C.W. DOWN TO TEMPERING STATION AND PIPE T.W. TO EYEWASH.
- ⑩ 2" W. DOWN WITH W.C.O., 2" V. UP AND 3/4" H. & C.W. DOWN TO H.W.S.-1.
- ⑪ 3" W. DOWN, 2" V. UP AND 3/4" H. & C.W. DOWN TO S.S.-1 WITH CHECK AND SHUT-OFF VALVES PROVIDED ON DROPS.
- ⑫ 2 1/2" C.W. AND 1 1/4" H.W. UP AND 1" H.W.R. FROM ABOVE.
- ⑬ REFER TO ENLARGED PLAN (B) FOR CONTINUATION.
- ⑭ 3" V. UP.
- ⑮ REFER TO ENLARGED PLAN (B) FOR CONTINUATION.
- ⑯ 1" C.W. AND 3/4" H.W. UP, 3/4" H.W.R. AND 3" W. FROM ABOVE.
- ⑰ 1 1/4" C.W. AND 3/4" H.W. UP, 3/4" H.W.R. AND 3" W. FROM ABOVE.
- ⑱ 2" W. DOWN TO BELOW GRADE WITH W.C.O.
- ⑲ 1" H. & C.W. UP, 3/4" H.W.R. FROM ABOVE.
- ⑳ 3" W. DOWN TO BELOW GRADE WITH W.C.O.
- ㉑ REFER TO DETAIL (4) P-6.00.
- ㉒ 3" W. FROM ABOVE AND 3/4" H. & C.W. UP WITH CHECK AND SHUT-OFF VALVES TO S.S.-1 ABOVE.
- ㉓ 2" W. FROM ABOVE AND 1/2" C.W. UP TO E.W.C.-2 ABOVE.
- ㉔ 2" W. FROM ABOVE AND 3/4" H. & C.W. UP TO E.W.-1 ABOVE.
- ㉕ 3" M.G. FROM ABOVE.
- ㉖ PIPE OVERHEAD TO G.W.E.-1 GROUNDWATER PIT.



⑲ 1/2" COMPRESSED AIR DOWN ON COLUMN WITH DIRT LEG AND SHUT-OFF VALVE TO 1/4" QUICK DISCONNECT AT +5'-0" ABOVE FINISHED FLOOR. VERIFY EXACT MOUNTING HEIGHT WITH ARCHITECT.

⑳ PROVIDE SEWAGE AND WATER BOARD METER, LINE SIZE, OR TO BE SIZED BY THE SEWAGE AND WATER BOARD. INSTALL IN ACCORDANCE WITH SEWAGE AND WATER BOARD REQUIREMENTS. PROVIDE SHUT-OFF VALVES.

㉑ PIPING SUPPORTED BELOW STAGE AND ORCHESTRA SEATING AREAS SHALL BE RESILIENTLY SUSPENDED FROM STRUCTURE ABOVE USING VIBRATION ISOLATION HANGERS.



THEATRE - BASEMENT LEVEL PLAN 1/8" = 1'-0" 1

ISSUED FOR PERMIT

© 2010 M+J